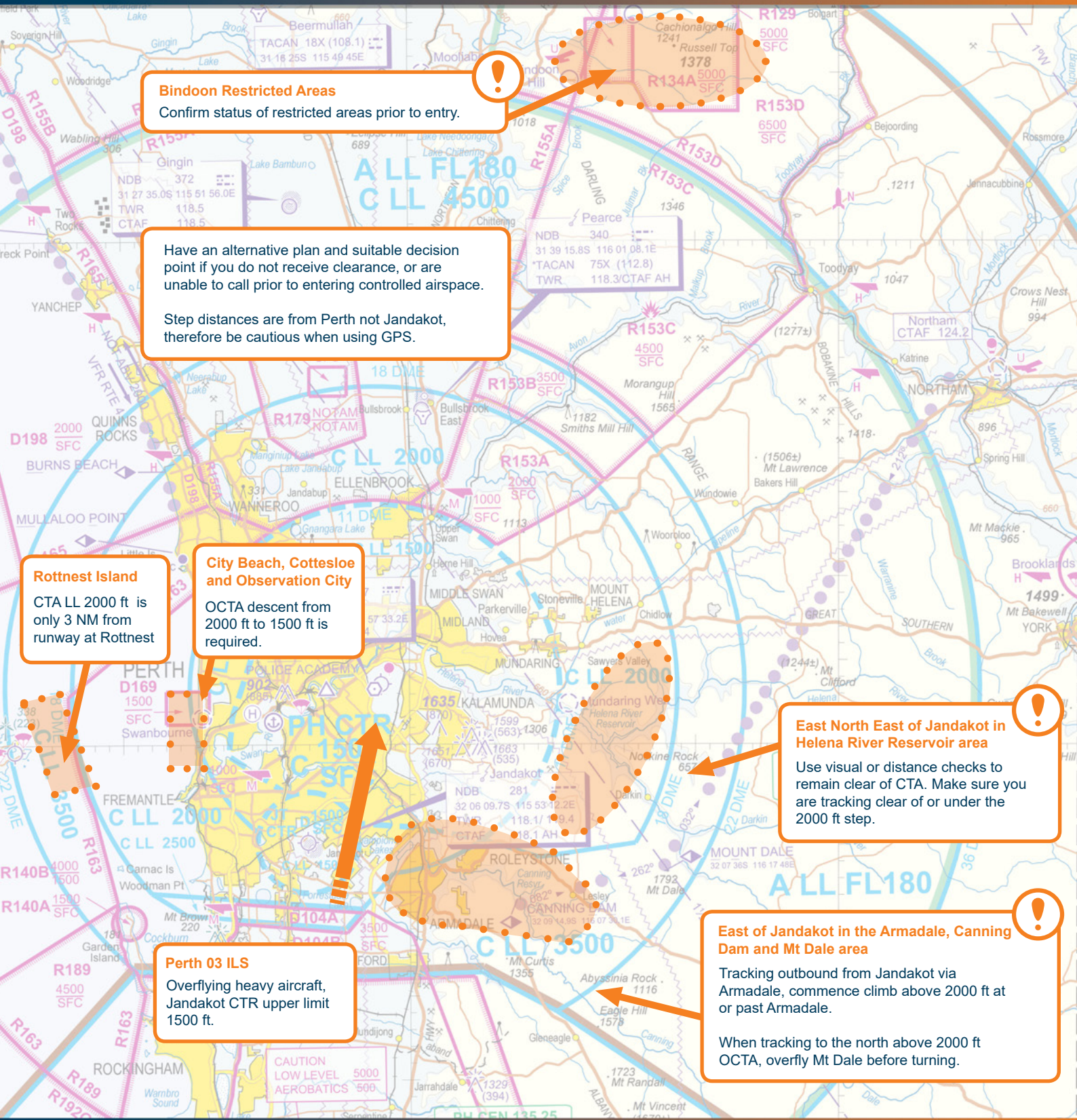


Airspace Infringement Hot Spots



Bindoon Restricted Areas
 Confirm status of restricted areas prior to entry.

Have an alternative plan and suitable decision point if you do not receive clearance, or are unable to call prior to entering controlled airspace.
 Step distances are from Perth not Jandakot, therefore be cautious when using GPS.

Rottneet Island
 CTA LL 2000 ft is only 3 NM from runway at Rottneet

City Beach, Cottesloe and Observation City
 OCTA descent from 2000 ft to 1500 ft is required.

East North East of Jandakot in Helena River Reservoir area
 Use visual or distance checks to remain clear of CTA. Make sure you are tracking clear of or under the 2000 ft step.

Perth 03 ILS
 Overflying heavy aircraft, Jandakot CTR upper limit 1500 ft.

East of Jandakot in the Armadale, Canning Dam and Mt Dale area
 Tracking outbound from Jandakot via Armadale, commence climb above 2000 ft at or past Armadale.
 When tracking to the north above 2000 ft OCTA, overfly Mt Dale before turning.



Monitor Perth Center 135.25 whenever able Squawk 1200 Mode C