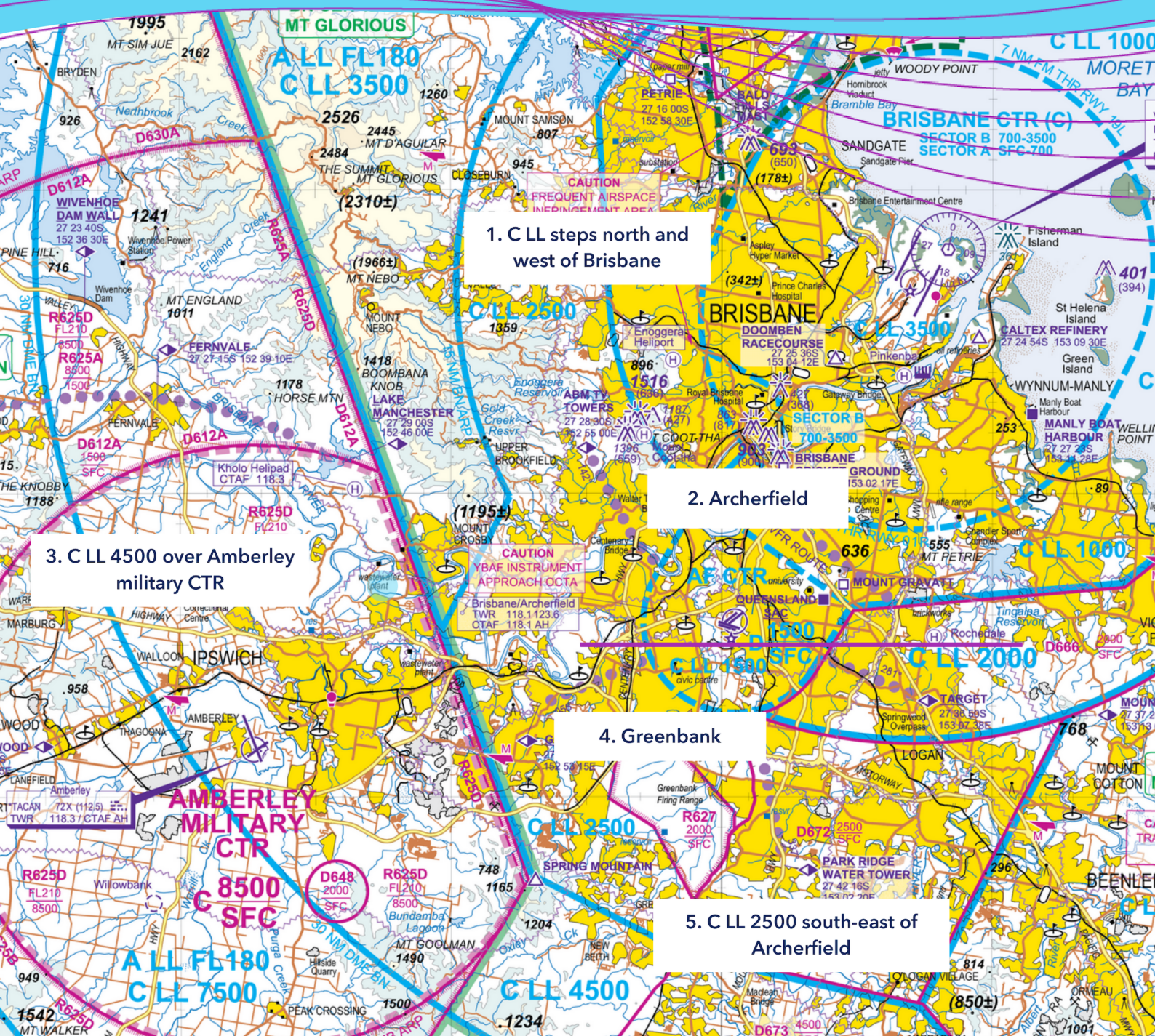


Brisbane Basin airspace infringement hot spots



Monitor Brisbane Center 125.7. Whenever able SQUAWK 1200 Mode C.
See. Be Seen. Avoid. FIT ADS-B.

Not for navigation. This information is current at the time of publication, July 2024. Please refer to AIP, DAPs, ERSA and NOTAMS for operational information.

Threats, errors and countermeasures

1. C LL Steps north and west of Brisbane (including over Redcliffe)

Threat

Infringing congested Class C airspace containing a large volume of IFR arrivals to and departures from Brisbane, resulting in a loss of separation. Increased workload for ATC may also result in a delay in coordination for other airspace users.

Error

Climbing too early or descending too late and mistakenly entering the C LL 1500, 2000 or 2500 steps.

Countermeasure

When tracking northbound from Archerfield through the 1500 ft step, track east of the TV towers. Use Lakes Samsonvale and Kurwongbah to remain clear of the C LL 1500 step before climbing.

When tracking southbound to Archerfield, Track below the C LL 2500 step west of the TV Towers. Use Enoggera Reservoir and Mt Coot-tha TV Towers to remain clear of the C LL 1500 step.

Stay vigilant of your altitude, keep a listening watch on the radio and comply with instructions from ATC.

Error

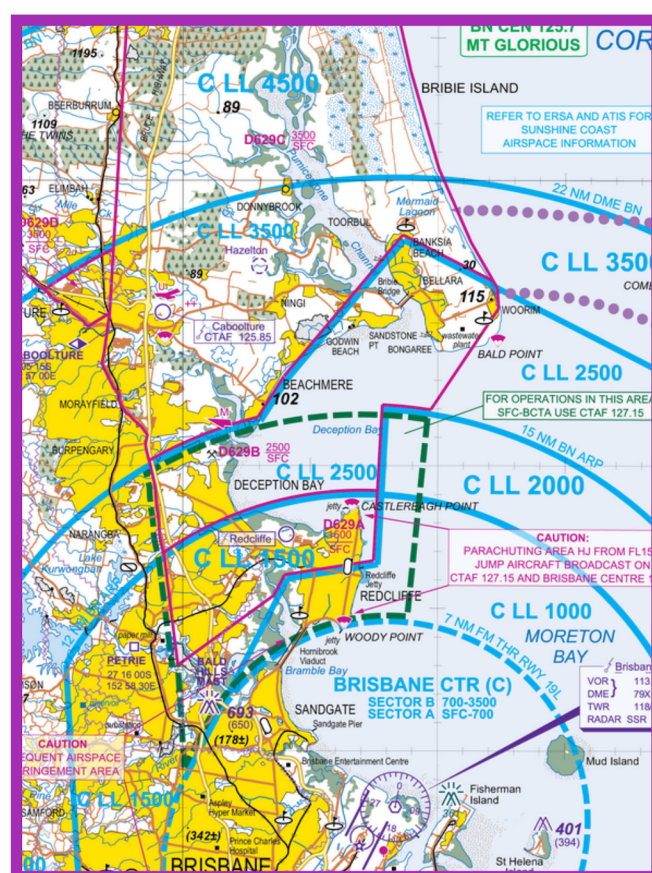
Departing Redcliffe Aerodrome and climbing out of Class G airspace above the base of the C LL mistakenly or without clearance.

Countermeasure

Familiarise yourself with the airspace you will be operating in and operate in accordance with local procedures in ERSA.

Stay vigilant of your altitude. Keep a listening watch on the radio and comply with instructions from ATC. Request your clearance well before reaching the CTA step (five minutes prior is a good guide).

Stay vigilant that the Brisbane CTR is only 4NM to the south of Redcliffe.



Redcliffe and surrounds - cropped from Brisbane VTC, June 24

2. Archerfield CTR

Threat

Infringing congested Class D airspace with a large volume of IFR arrivals and departures, resulting in a loss of separation.

Error

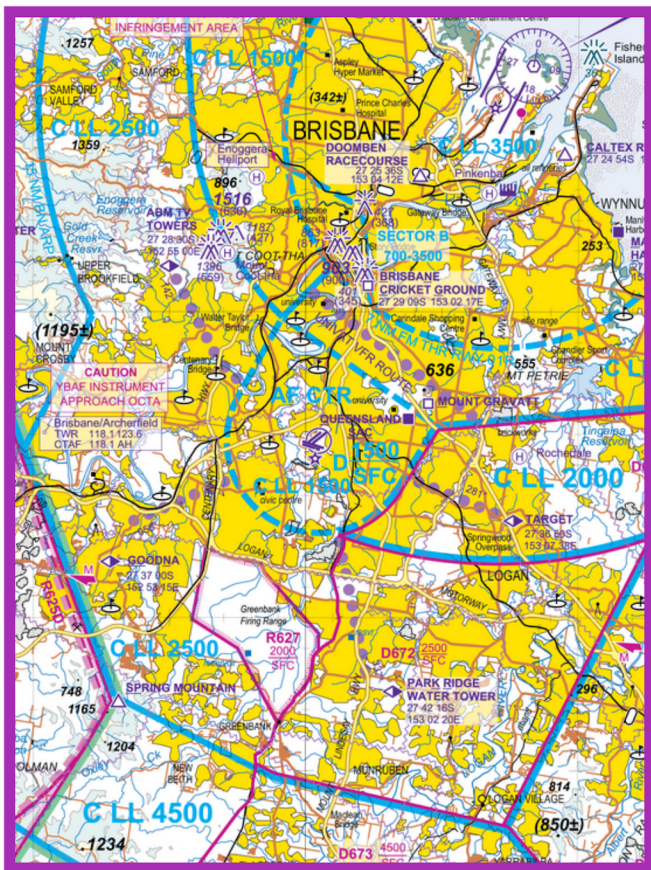
Climbing into the C LL 1500 step south-west of Brisbane CTR.

Countermeasure

Track below the C LL 2500 step west of the Mt Coo-tha TV towers.

Use Enoggera Reservoir and the TV towers to remain clear of the C LL 1500 step.

Ensure to track inbound at 1500 ft and outbound at 1000 ft.



Archerfield airspace and surrounds - cropped from Brisbane VTC, June 24

3. C LL 4500 over Amberley military CTR

Threat

Infringing military airspace resulting in loss of separation with military aircraft or activity.

Error

Ascending to above the step's lower limit of 4500 ft from surrounding glass G airspace.

Countermeasure

Familiarise yourself with significant VFR points in and around Amberley airspace, and stay vigilant of your proximity to the step within the Amberley Military CTR. Check restricted area status with NAIPS before your flight. If deactivated, as a courtesy reconfirm the status with ATC before entering.

When AMB is not active, Class C lower limit is 4500 ft.

Keep a listening watch on your radio.



Amberley CTR - cropped from Brisbane VTC, June 24

4. Greenbank

Threat

Infringing military airspace resulting in loss of separation with military aircraft or activity.

Error

Flying at incorrect altitude for airspace status.

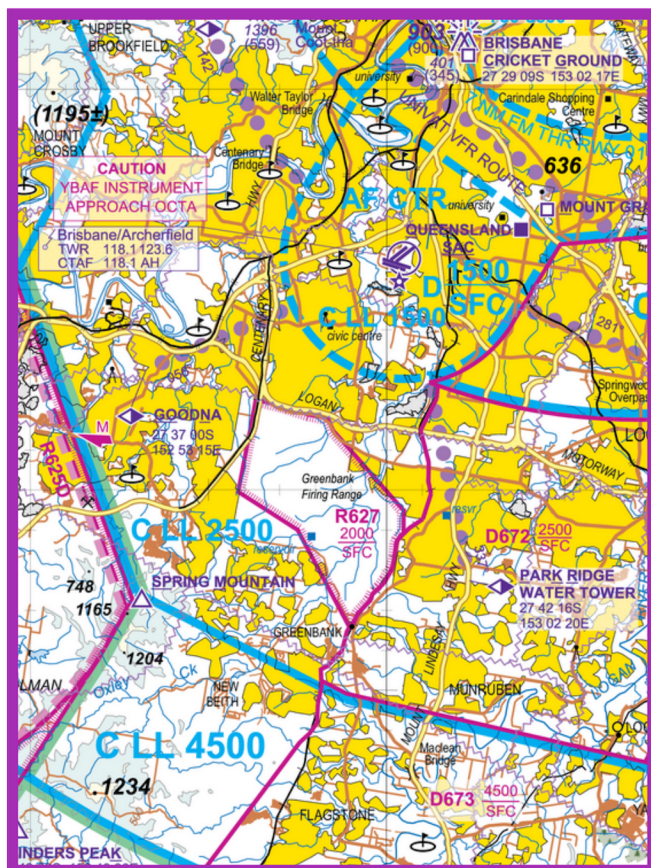
Countermeasure

Check the latest NOTAMS and carry out a preflight NAIPS location brief to determine the current status of Greenbank Airspace, R627.

Stay vigilant of SFC - 2000 ft active daily.

Check status at 2000 ft - 3500 ft.

It is also pertinent to note D623, D673 and D672 are in close proximity to this airspace.



Greenbank area - cropped from Brisbane VTC, June 24

5. South-east of Archerfield

Threat

Infringing congested Class C airspace with a large volume of IFR arrivals to and departures from Brisbane, resulting in a loss of separation. Increased workload for ATC, resulting in delay to coordination for other airspace users.

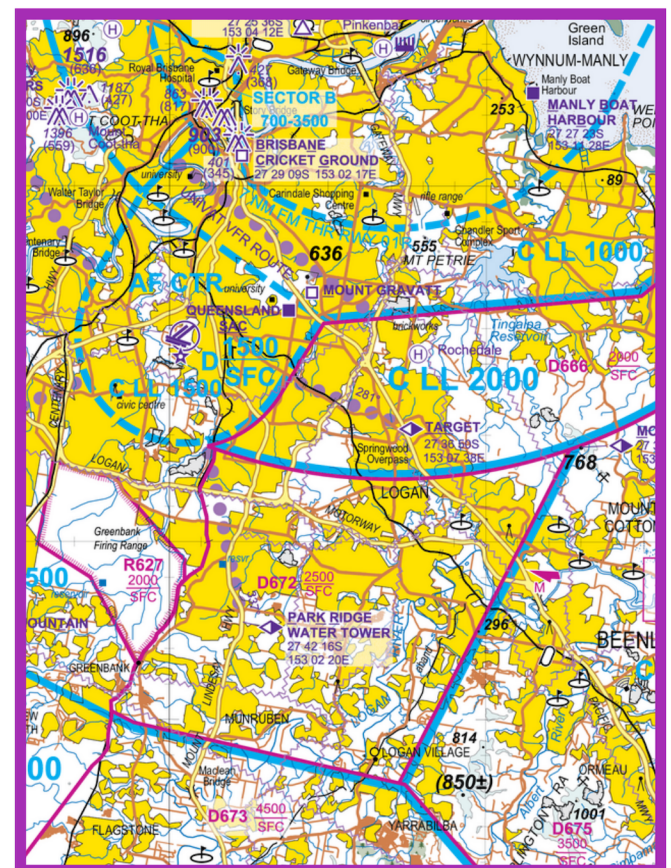
Error

Climbing into the C LL 2500 step south-east of Archerfield and south of Brisbane CTR unintentionally or without clearance.

Countermeasure

If flying within the D666 and D672 training areas, leave a buffer under 2500 ft to remain well below the lower limit of Class C airspace above.

Keep a listening watch on your radio.



Archerfield area - cropped from Brisbane VTC, June 24

More resources

For further information on operational insights to equip you for a safer flight, visit bit.ly/pilotsafety.



If you have questions, or would like to provide us some feedback about this publication please email, safetypromotions@airservicesaustralia.com.

For aviation safety-related information from CASA, visit casa.gov.au/resources-and-education/pilot-safety-hub.

Check NAIPS for the latest NOTAMS at airservicesaustralia.com/naips.

Sources

Hot spot areas were determined by data collected by Airservices Australia between January 2021 and May 2022.

For more information, visit airservicesaustralia.com/industry-info/flight-briefing/pilot-and-airside-safety/airspace-infringement.

Maps included in this document are extracts from the relevant VNC, current as of publication.

To access the full map, as well as other documents within the Aeronautical Information Package (AIP) visit

airservicesaustralia.com/aip/aip.asp.

Not for navigation. This information is current at the time of publication. Refer to the current AIP for latest charts and operational information.

