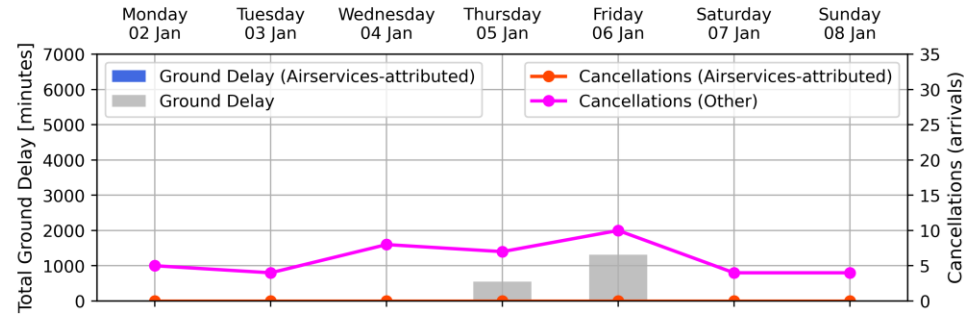


2023 Network Performance for Major Aerodromes

20 June 2023

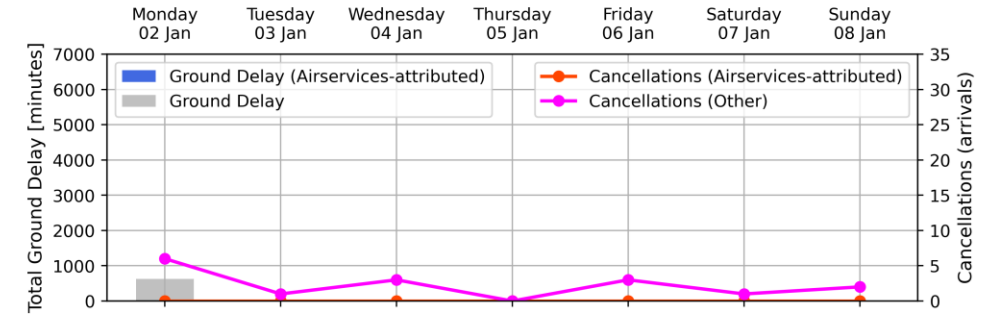
Weekly Airport Overview – Week starting 2 Jan 2023

Sydney KSA - Week starting 02 Jan 2023



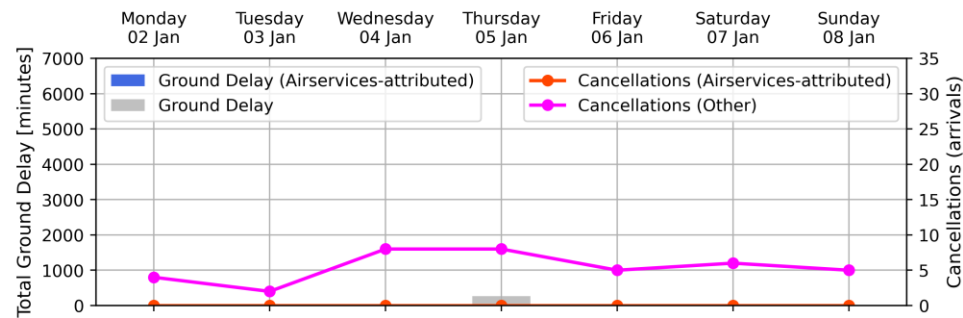
Arrivals	Monday	Tuesday	Wednesday	Thursday	Friday	Saturday	Sunday
Total Movements	391	409	409	421	422	361	377
GDP Hours	796	820	821	839	839	707	770
GDP Compliance [%]	No GDP	No GDP	No GDP	7	16	No GDP	No GDP
- Qantas Group	N/A	N/A	N/A	87	82	N/A	N/A
- Jetstar	N/A	N/A	N/A	86	58	N/A	N/A
- Virgin Australia	N/A	N/A	N/A	86	63	N/A	N/A
- REX	N/A	N/A	N/A	89	92	N/A	N/A
- Other	N/A	N/A	N/A	50	56	N/A	N/A

Melbourne Airport - Week starting 02 Jan 2023



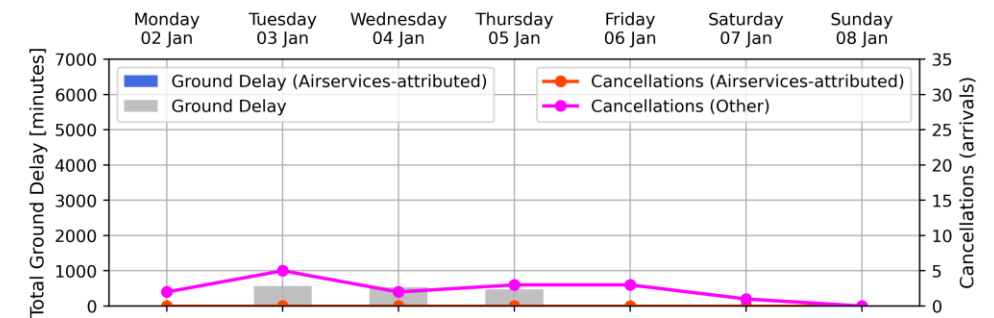
Arrivals	Monday	Tuesday	Wednesday	Thursday	Friday	Saturday	Sunday
Total Movements	294	299	326	337	336	278	299
GDP Hours	601	604	646	675	669	556	600
GDP Compliance [%]	17	1	No GDP	No GDP	No GDP	No GDP	No GDP
- Qantas Group	82	N/A	N/A	N/A	N/A	N/A	N/A
- Jetstar	55	0	N/A	N/A	N/A	N/A	N/A
- Virgin Australia	85	N/A	N/A	N/A	N/A	N/A	N/A
- REX	87	N/A	N/A	N/A	N/A	N/A	N/A
- Other	100	N/A	N/A	N/A	N/A	N/A	N/A

Brisbane Airport - Week starting 02 Jan 2023



Arrivals	Monday	Tuesday	Wednesday	Thursday	Friday	Saturday	Sunday
Total Movements	261	281	279	285	285	215	223
GDP Hours	525	559	557	582	570	413	457
GDP Compliance [%]	No GDP	No GDP	No GDP	7	No GDP	No GDP	No GDP
- Qantas Group	N/A	N/A	N/A	91	N/A	N/A	N/A
- Jetstar	N/A	N/A	N/A	20	N/A	N/A	N/A
- Virgin Australia	N/A	N/A	N/A	61	N/A	N/A	N/A
- REX	N/A	N/A	N/A	80	N/A	N/A	N/A
- Other	N/A	N/A	N/A	46	N/A	N/A	N/A

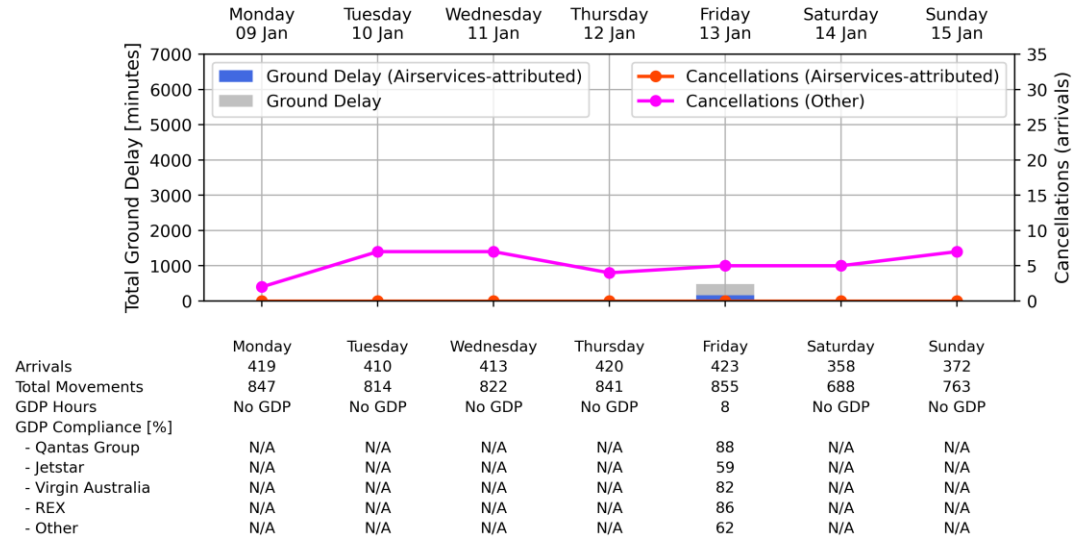
Perth Airport - Week starting 02 Jan 2023



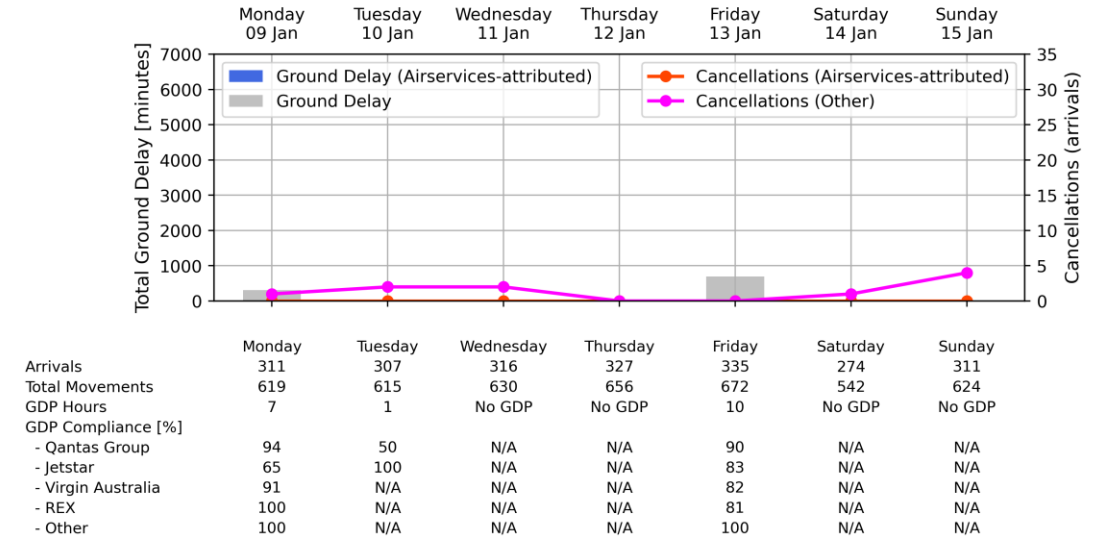
Arrivals	Monday	Tuesday	Wednesday	Thursday	Friday	Saturday	Sunday
Total Movements	195	250	234	251	198	100	109
GDP Hours	390	499	473	503	397	199	220
GDP Compliance [%]	No GDP	14	6	15	No GDP	No GDP	No GDP
- Qantas Group	N/A	82	78	76	N/A	N/A	N/A
- Jetstar	N/A	100	N/A	100	N/A	N/A	N/A
- Virgin Australia	N/A	86	88	95	N/A	N/A	N/A
- REX	N/A	17	100	100	N/A	N/A	N/A
- Other	N/A	71	76	72	N/A	N/A	N/A

Weekly Airport Overview – Week starting 9 Jan 2023

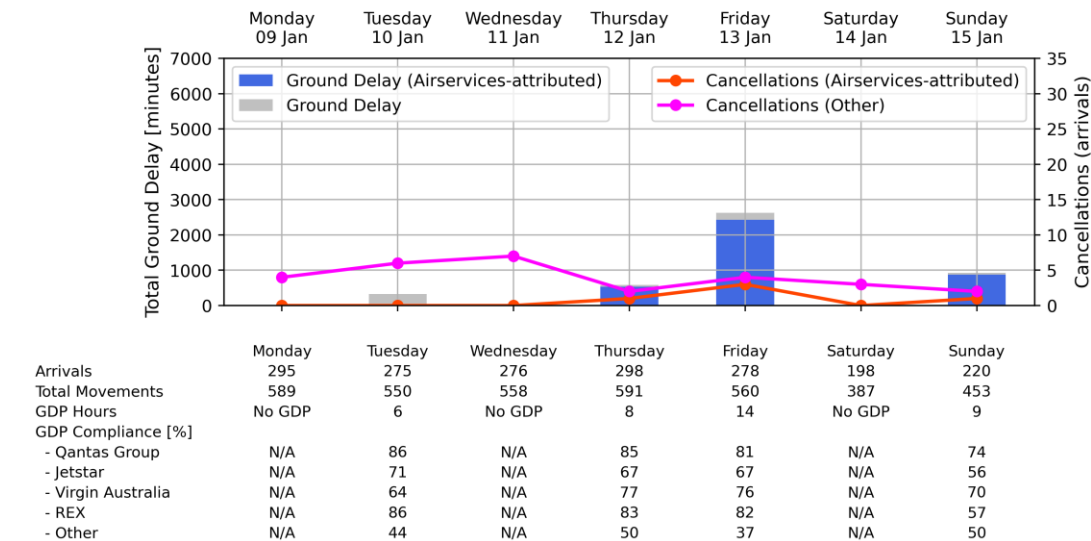
Sydney KSA - Week starting 09 Jan 2023



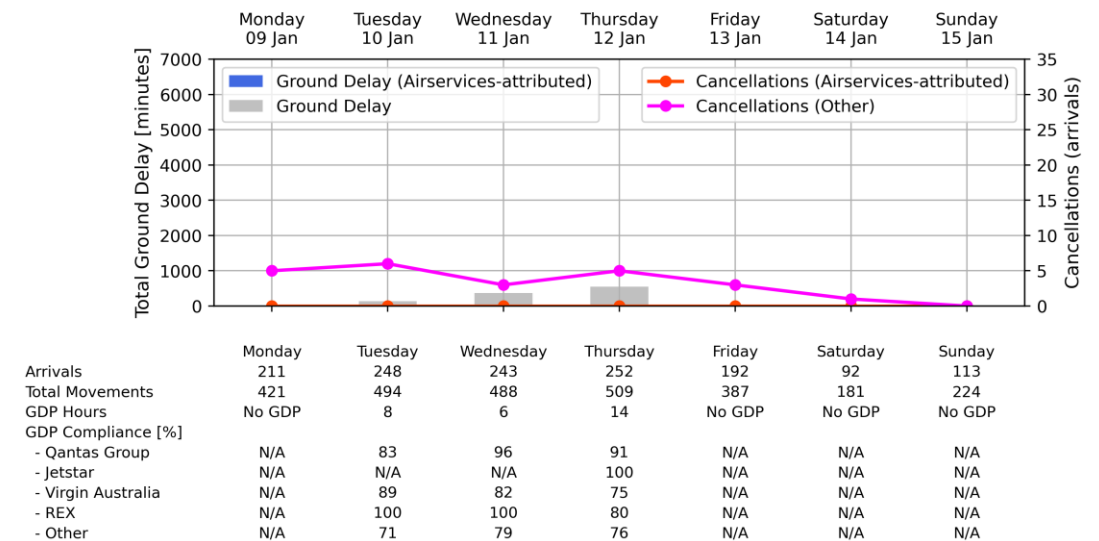
Melbourne Airport - Week starting 09 Jan 2023



Brisbane Airport - Week starting 09 Jan 2023

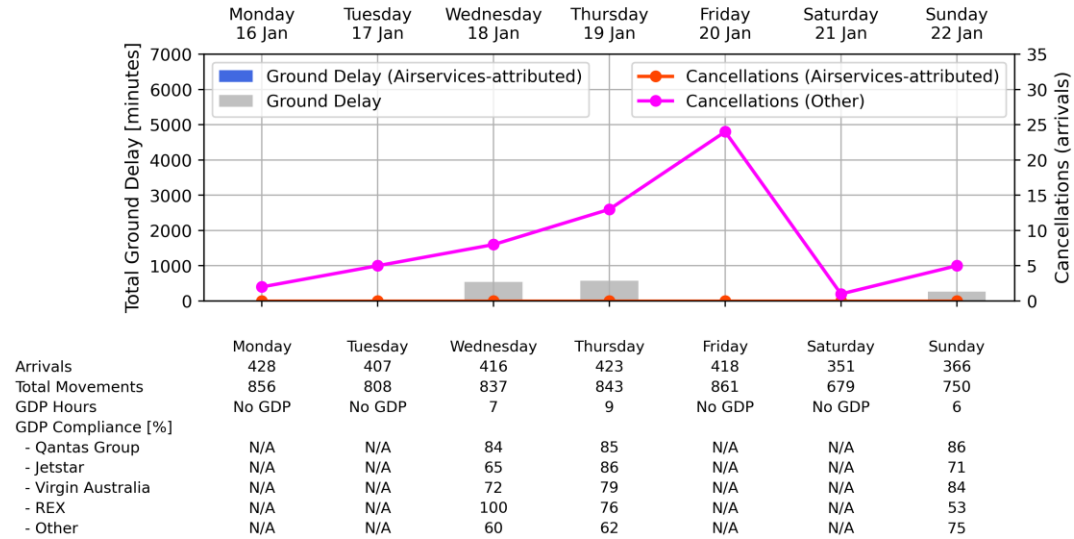


Perth Airport - Week starting 09 Jan 2023

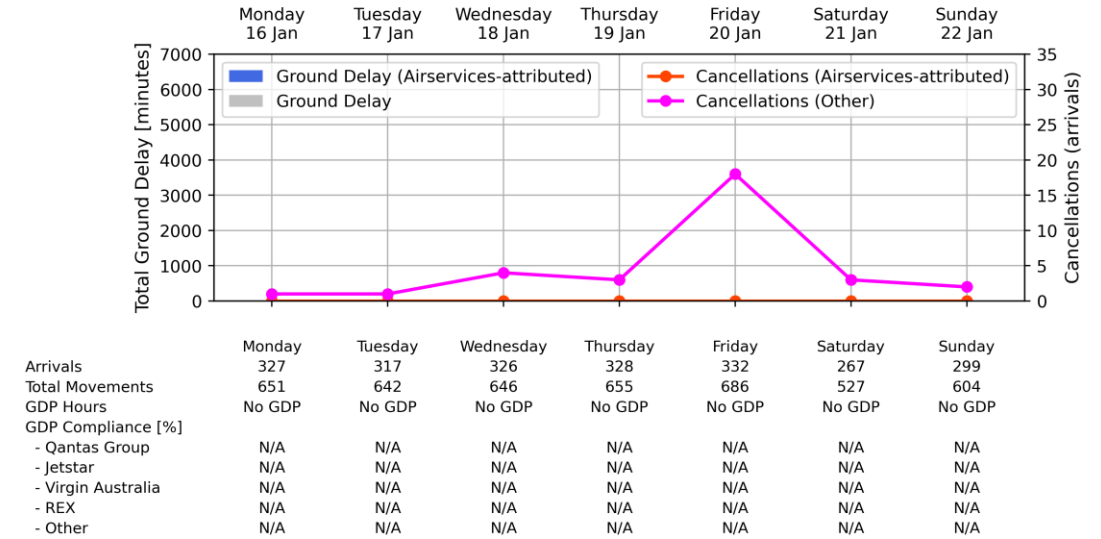


Weekly Airport Overview – Week starting 16 Jan 2023

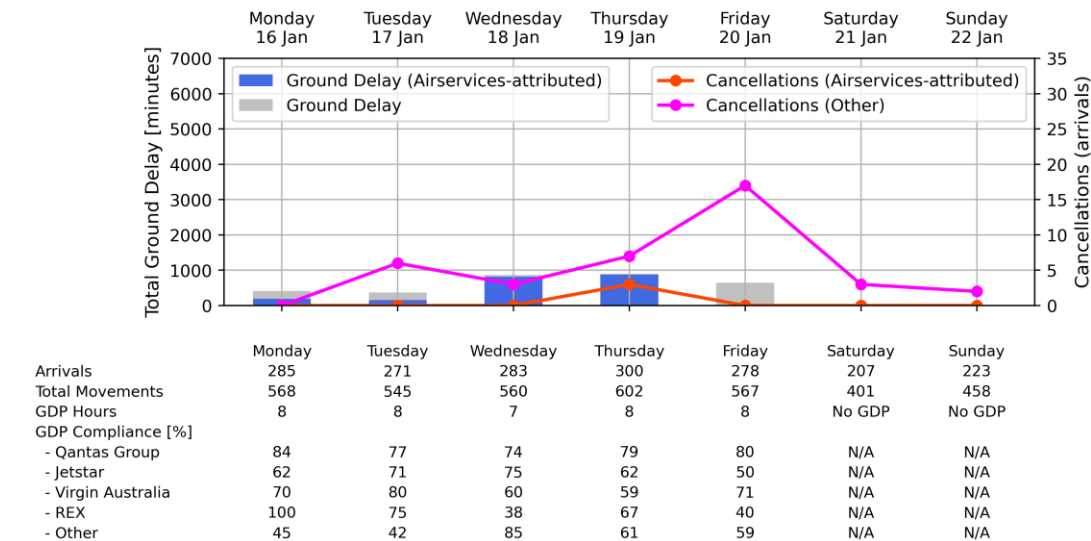
Sydney KSA - Week starting 16 Jan 2023



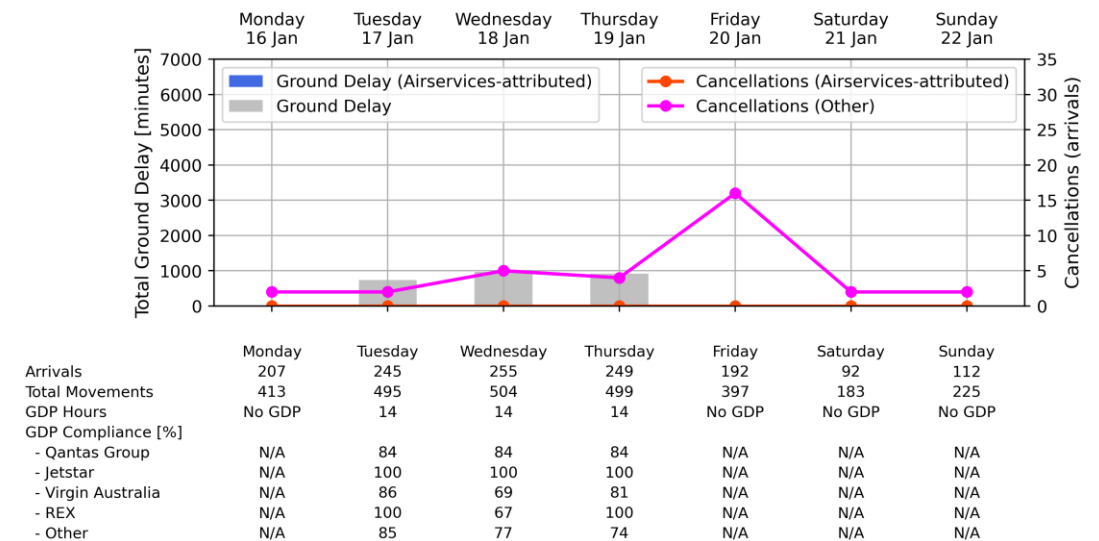
Melbourne Airport - Week starting 16 Jan 2023



Brisbane Airport - Week starting 16 Jan 2023

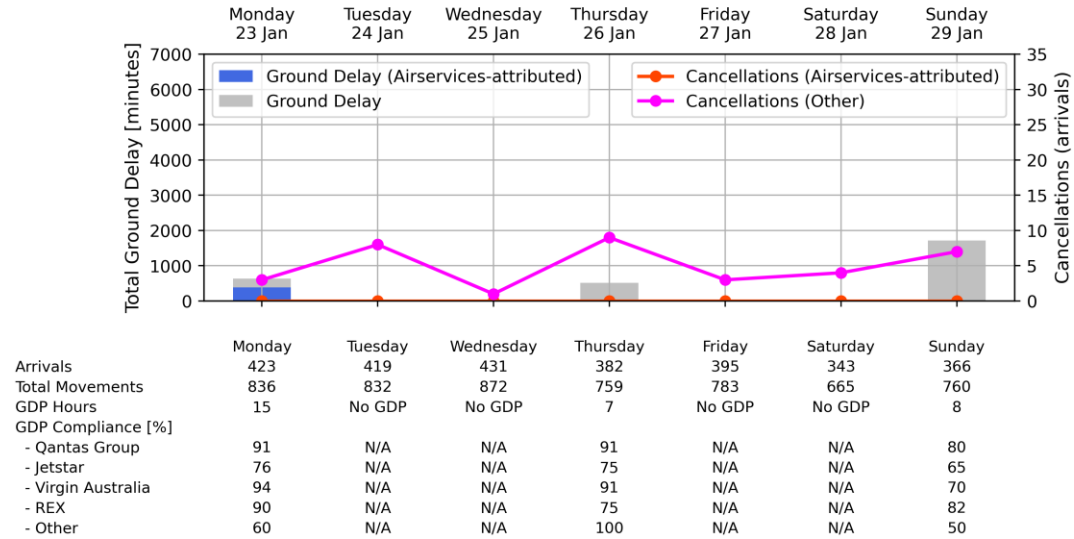


Perth Airport - Week starting 16 Jan 2023

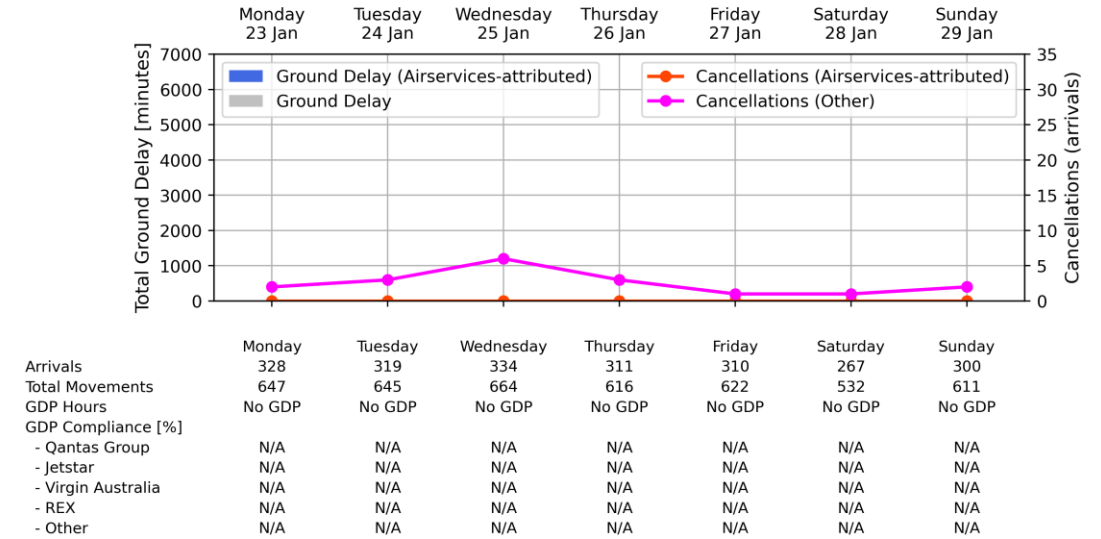


Weekly Airport Overview – Week starting 23 Jan 2023

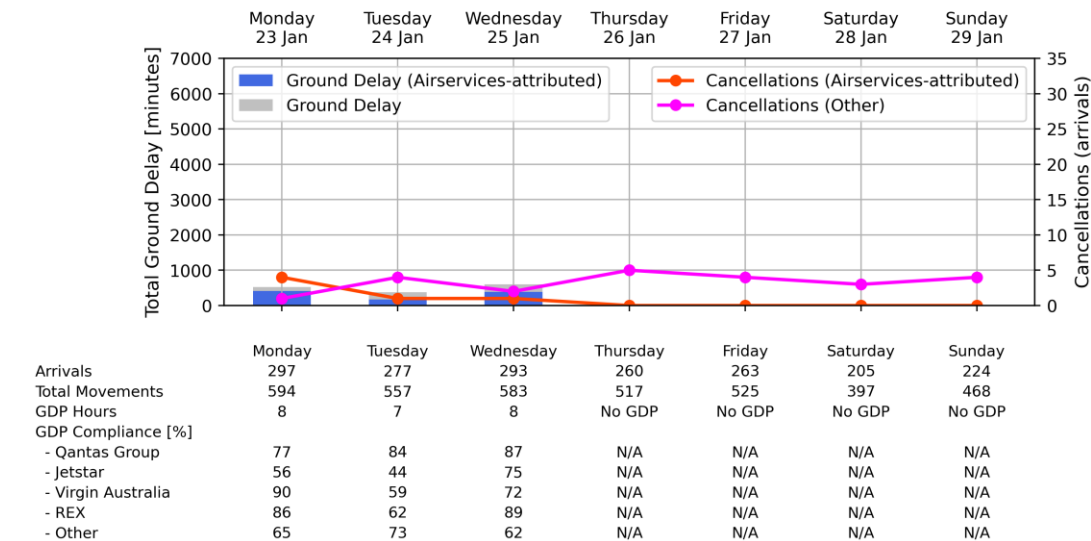
Sydney KSA - Week starting 23 Jan 2023



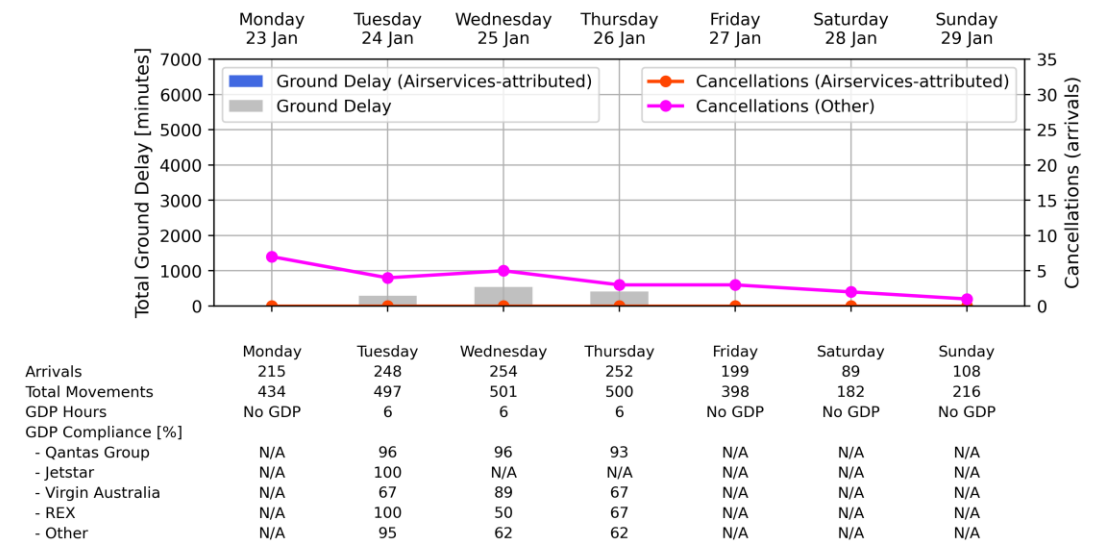
Melbourne Airport - Week starting 23 Jan 2023



Brisbane Airport - Week starting 23 Jan 2023

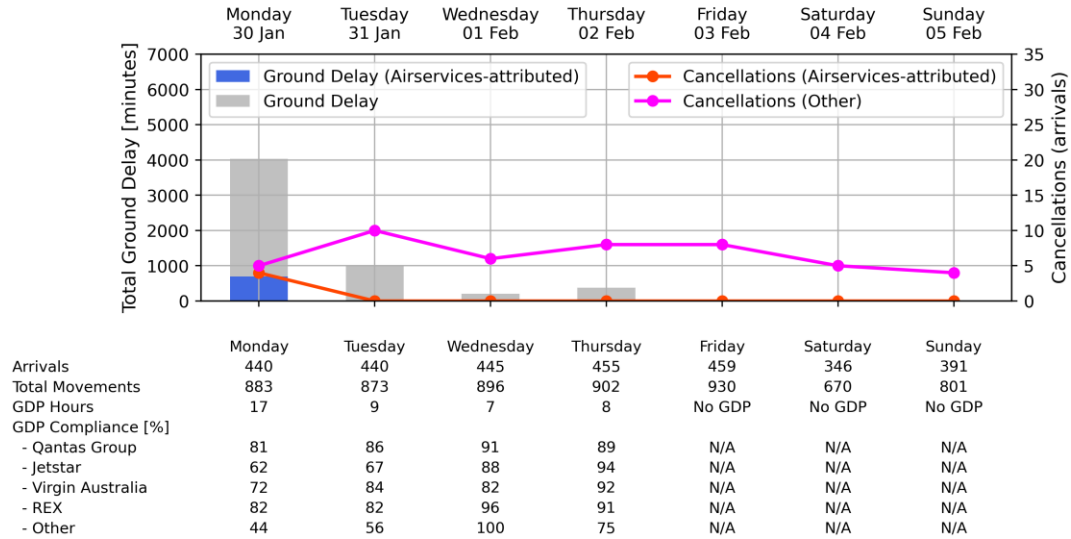


Perth Airport - Week starting 23 Jan 2023

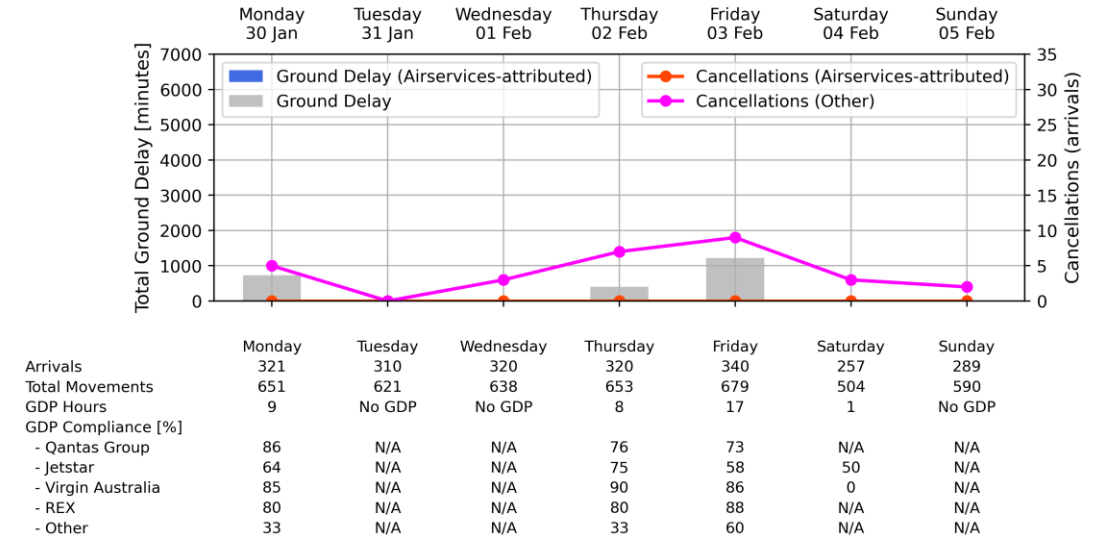


Weekly Airport Overview – Week starting 30 Jan 2023

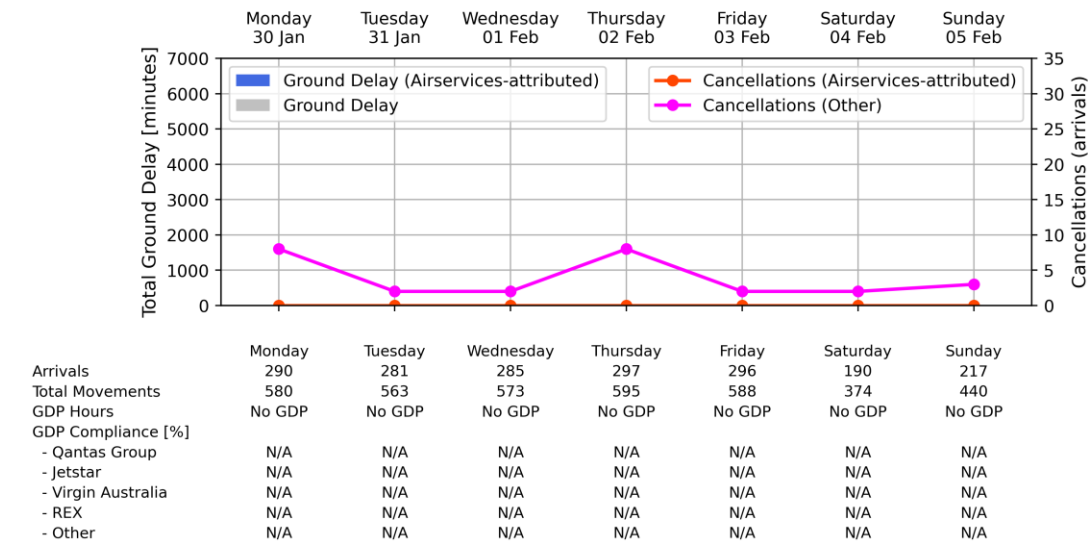
Sydney KSA - Week starting 30 Jan 2023



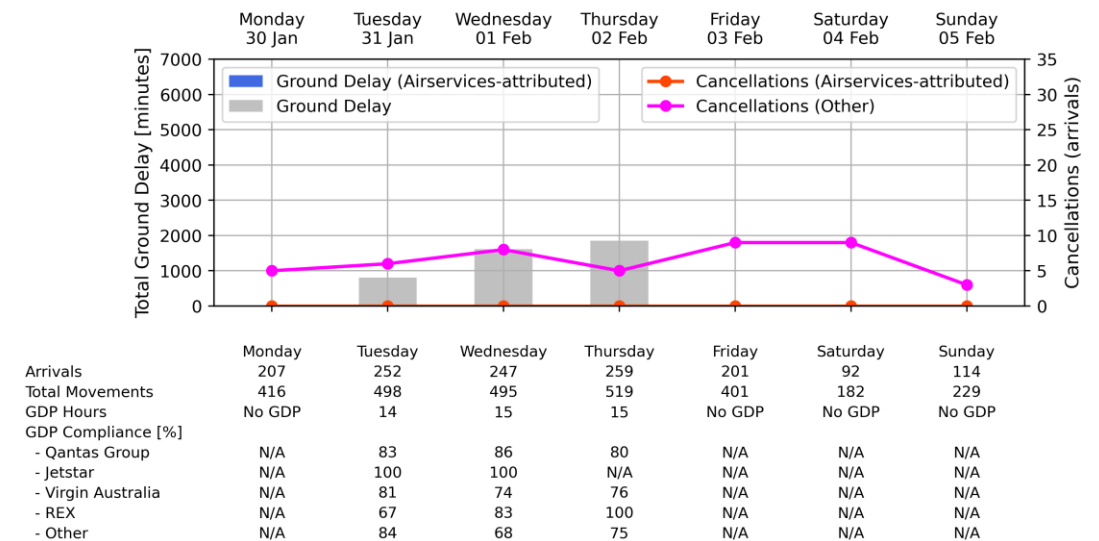
Melbourne Airport - Week starting 30 Jan 2023



Brisbane Airport - Week starting 30 Jan 2023

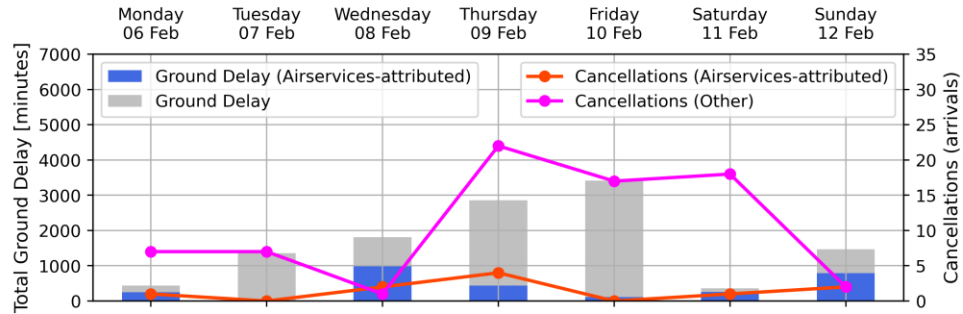


Perth Airport - Week starting 30 Jan 2023



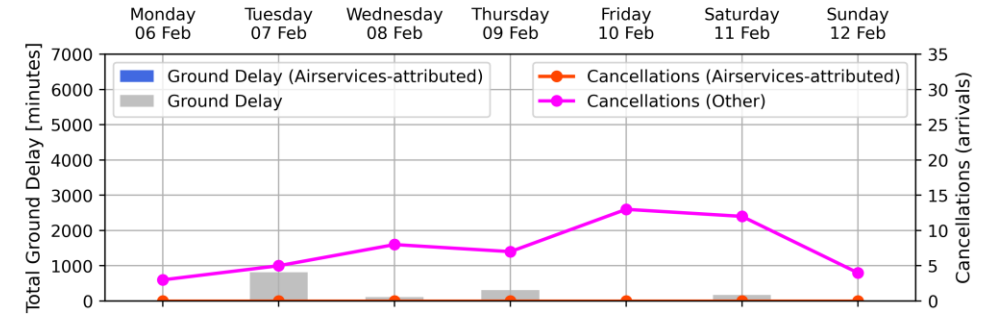
Weekly Airport Overview – Week starting 6 Feb 2023

Sydney KSA - Week starting 06 Feb 2023



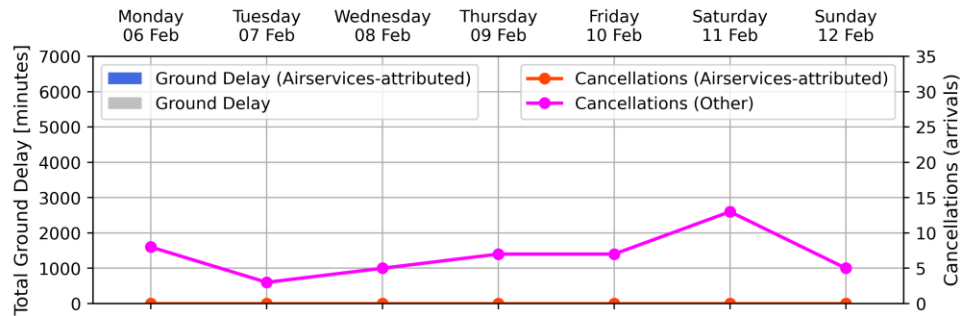
	Monday 06 Feb	Tuesday 07 Feb	Wednesday 08 Feb	Thursday 09 Feb	Friday 10 Feb	Saturday 11 Feb	Sunday 12 Feb
Arrivals	457	442	431	417	460	333	377
Total Movements	909	883	869	816	938	651	777
GDP Hours	8	16	17	17	17	9	8
GDP Compliance [%]							
- Qantas Group	97	91	91	80	80	88	91
- Jetstar	79	79	63	59	58	80	92
- Virgin Australia	90	90	93	75	77	91	87
- REX	97	94	96	72	72	81	74
- Other	50	59	91	78	63	50	60

Melbourne Airport - Week starting 06 Feb 2023



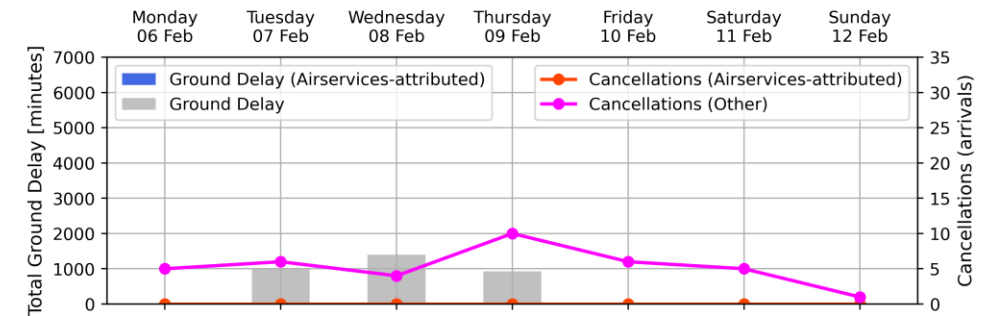
	Monday 06 Feb	Tuesday 07 Feb	Wednesday 08 Feb	Thursday 09 Feb	Friday 10 Feb	Saturday 11 Feb	Sunday 12 Feb
Arrivals	327	310	315	306	319	253	285
Total Movements	655	612	630	617	641	505	575
GDP Hours	No GDP	10	7	10	No GDP	6	No GDP
GDP Compliance [%]							
- Qantas Group	N/A	83	89	81	N/A	100	N/A
- Jetstar	N/A	67	75	77	N/A	90	N/A
- Virgin Australia	N/A	74	93	58	N/A	93	N/A
- REX	N/A	80	100	46	N/A	83	N/A
- Other	N/A	100	N/A	0	N/A	N/A	N/A

Brisbane Airport - Week starting 06 Feb 2023



	Monday 06 Feb	Tuesday 07 Feb	Wednesday 08 Feb	Thursday 09 Feb	Friday 10 Feb	Saturday 11 Feb	Sunday 12 Feb
Arrivals	304	288	301	291	304	186	232
Total Movements	616	574	604	587	602	372	474
GDP Hours	No GDP	No GDP	No GDP	No GDP	No GDP	No GDP	No GDP
GDP Compliance [%]							
- Qantas Group	N/A	N/A	N/A	N/A	N/A	N/A	N/A
- Jetstar	N/A	N/A	N/A	N/A	N/A	N/A	N/A
- Virgin Australia	N/A	N/A	N/A	N/A	N/A	N/A	N/A
- REX	N/A	N/A	N/A	N/A	N/A	N/A	N/A
- Other	N/A	N/A	N/A	N/A	N/A	N/A	N/A

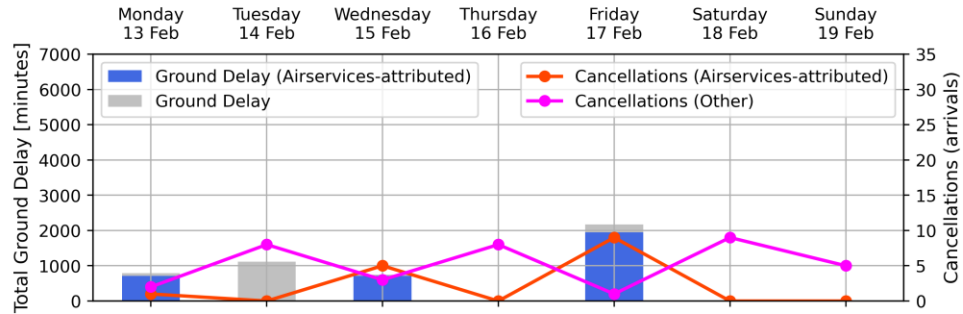
Perth Airport - Week starting 06 Feb 2023



	Monday 06 Feb	Tuesday 07 Feb	Wednesday 08 Feb	Thursday 09 Feb	Friday 10 Feb	Saturday 11 Feb	Sunday 12 Feb
Arrivals	204	262	243	271	204	86	108
Total Movements	413	521	494	546	391	178	211
GDP Hours	No GDP	15	15	15	No GDP	No GDP	No GDP
GDP Compliance [%]							
- Qantas Group	N/A	83	89	82	N/A	N/A	N/A
- Jetstar	N/A	0	100	N/A	N/A	N/A	N/A
- Virgin Australia	N/A	84	87	72	N/A	N/A	N/A
- REX	N/A	83	83	56	N/A	N/A	N/A
- Other	N/A	70	72	63	N/A	N/A	N/A

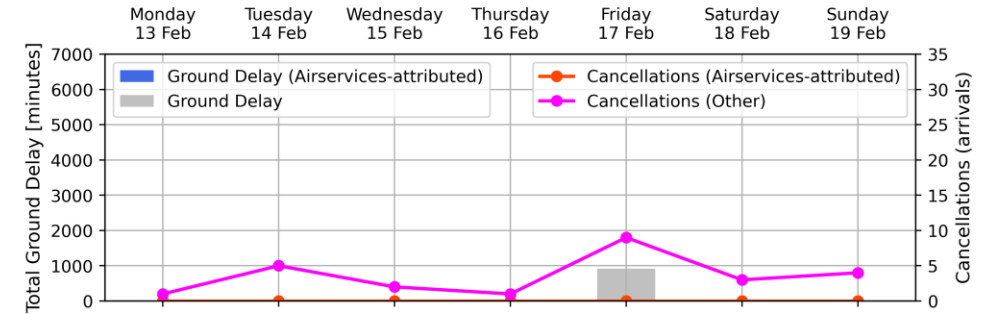
Weekly Airport Overview – Week starting 13 Feb 2023

Sydney KSA - Week starting 13 Feb 2023



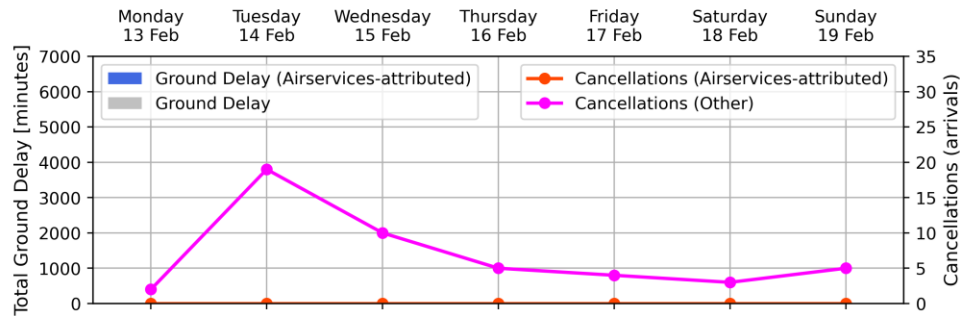
	Monday 13 Feb	Tuesday 14 Feb	Wednesday 15 Feb	Thursday 16 Feb	Friday 17 Feb	Saturday 18 Feb	Sunday 19 Feb
Arrivals	434	434	425	450	458	338	382
Total Movements	869	855	859	897	926	652	784
GDP Hours	9	11	8	No GDP	13	No GDP	No GDP
GDP Compliance [%]							
- Qantas Group	87	89	93	N/A	80	N/A	N/A
- Jetstar	90	67	71	N/A	69	N/A	N/A
- Virgin Australia	76	90	91	N/A	82	N/A	N/A
- REX	97	88	87	N/A	86	N/A	N/A
- Other	62	71	67	N/A	38	N/A	N/A

Melbourne Airport - Week starting 13 Feb 2023



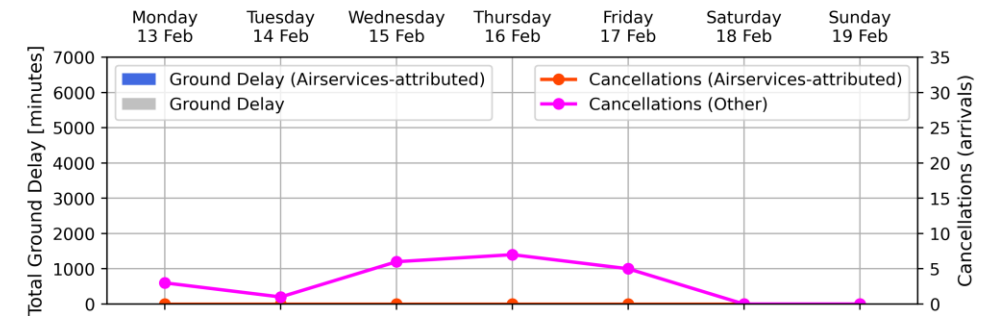
	Monday 13 Feb	Tuesday 14 Feb	Wednesday 15 Feb	Thursday 16 Feb	Friday 17 Feb	Saturday 18 Feb	Sunday 19 Feb
Arrivals	310	293	318	322	328	250	278
Total Movements	626	581	624	660	657	493	561
GDP Hours	No GDP	No GDP	No GDP	No GDP	17	1	No GDP
GDP Compliance [%]							
- Qantas Group	N/A	N/A	N/A	N/A	78	N/A	N/A
- Jetstar	N/A	N/A	N/A	N/A	72	33	N/A
- Virgin Australia	N/A	N/A	N/A	N/A	83	0	N/A
- REX	N/A	N/A	N/A	N/A	75	N/A	N/A
- Other	N/A	N/A	N/A	N/A	75	N/A	N/A

Brisbane Airport - Week starting 13 Feb 2023



	Monday 13 Feb	Tuesday 14 Feb	Wednesday 15 Feb	Thursday 16 Feb	Friday 17 Feb	Saturday 18 Feb	Sunday 19 Feb
Arrivals	298	265	296	298	304	195	218
Total Movements	595	539	589	606	603	374	452
GDP Hours	No GDP	No GDP	No GDP	No GDP	No GDP	No GDP	No GDP
GDP Compliance [%]							
- Qantas Group	N/A	N/A	N/A	N/A	N/A	N/A	N/A
- Jetstar	N/A	N/A	N/A	N/A	N/A	N/A	N/A
- Virgin Australia	N/A	N/A	N/A	N/A	N/A	N/A	N/A
- REX	N/A	N/A	N/A	N/A	N/A	N/A	N/A
- Other	N/A	N/A	N/A	N/A	N/A	N/A	N/A

Perth Airport - Week starting 13 Feb 2023

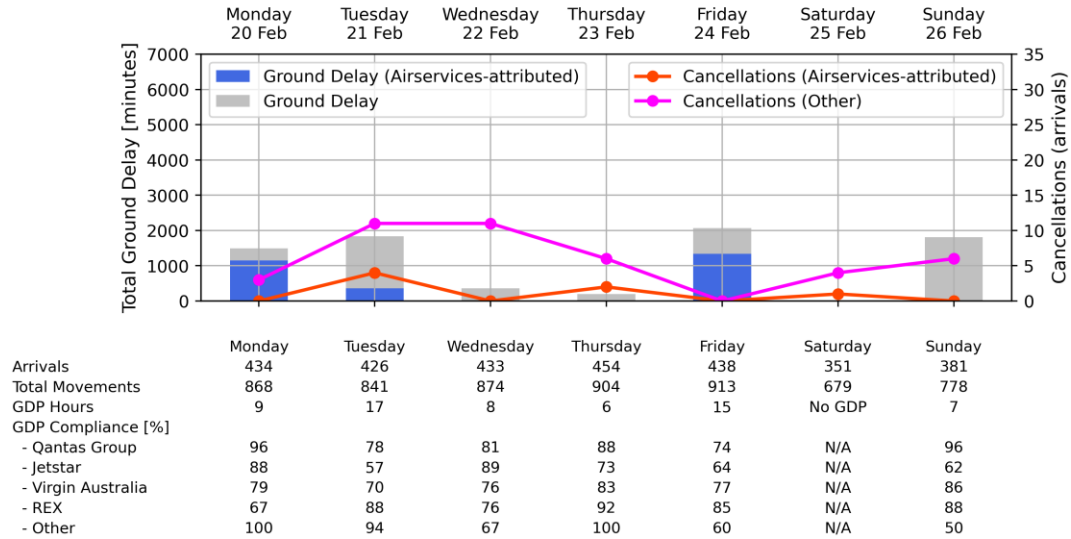


	Monday 13 Feb	Tuesday 14 Feb	Wednesday 15 Feb	Thursday 16 Feb	Friday 17 Feb	Saturday 18 Feb	Sunday 19 Feb
Arrivals	211	250	240	251	202	93	103
Total Movements	430	496	489	508	393	190	207
GDP Hours	No GDP	No GDP	No GDP	No GDP	No GDP	No GDP	No GDP
GDP Compliance [%]							
- Qantas Group	N/A	N/A	N/A	N/A	N/A	N/A	N/A
- Jetstar	N/A	N/A	N/A	N/A	N/A	N/A	N/A
- Virgin Australia	N/A	N/A	N/A	N/A	N/A	N/A	N/A
- REX	N/A	N/A	N/A	N/A	N/A	N/A	N/A
- Other	N/A	N/A	N/A	N/A	N/A	N/A	N/A

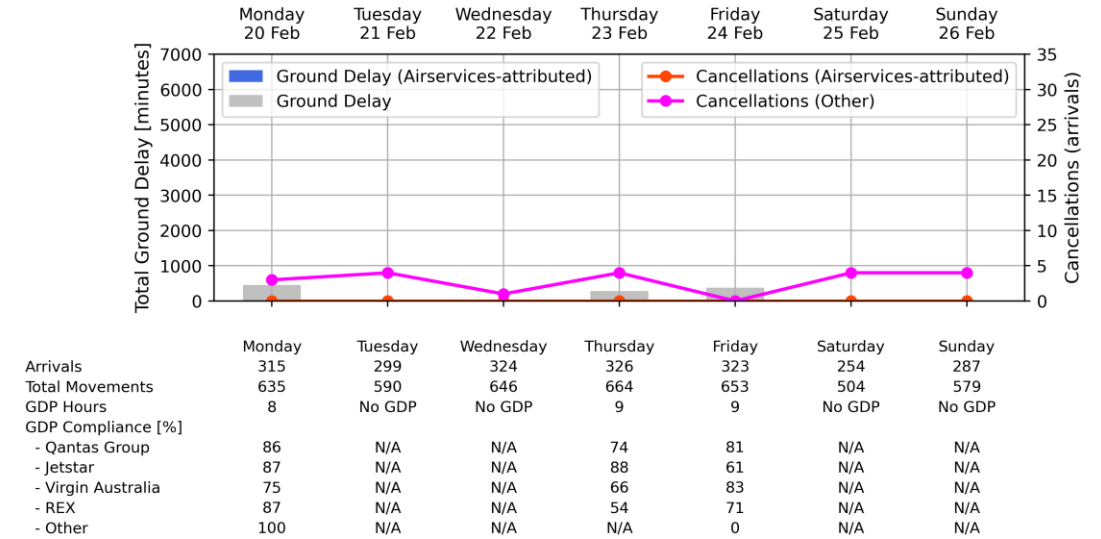
Weekly Airport Overview – Week starting 20 Feb 2023

*Due to a data issue, flight cancellation data was not available for Friday February 24

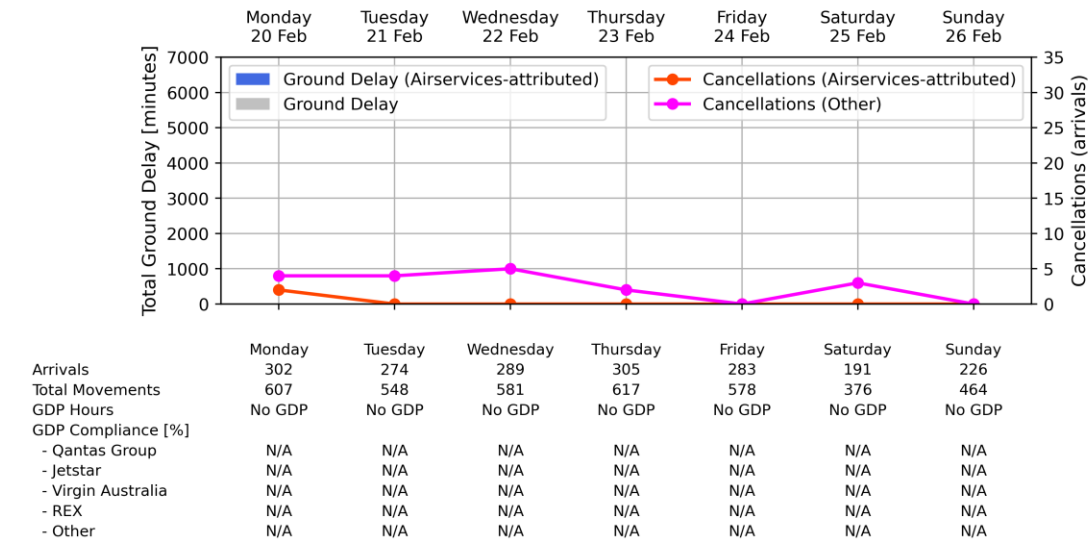
Sydney KSA - Week starting 20 Feb 2023



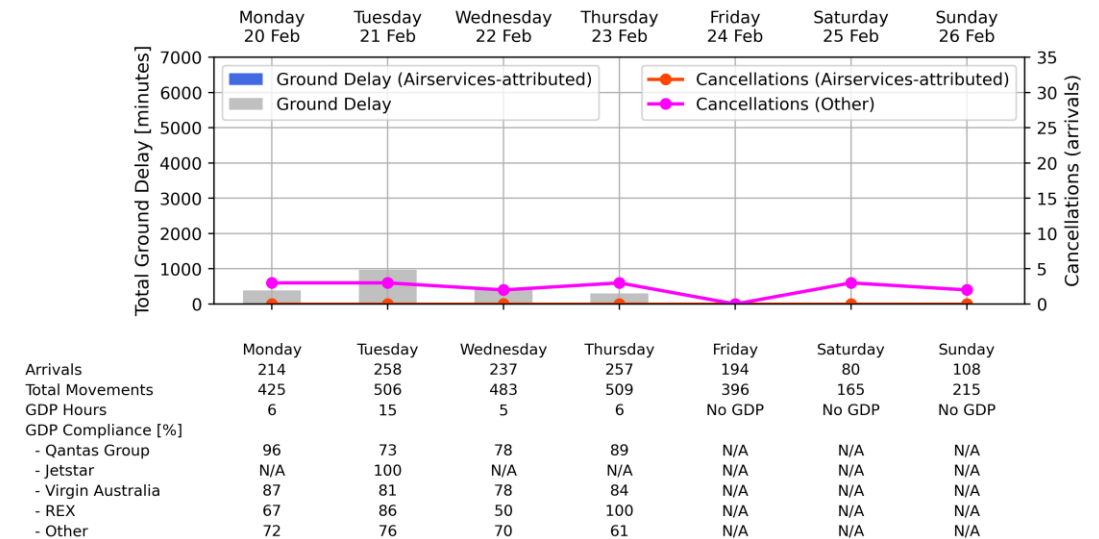
Melbourne Airport - Week starting 20 Feb 2023



Brisbane Airport - Week starting 20 Feb 2023

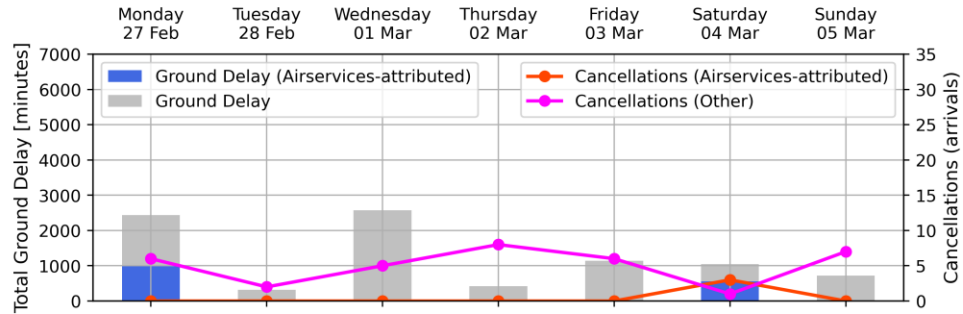


Perth Airport - Week starting 20 Feb 2023



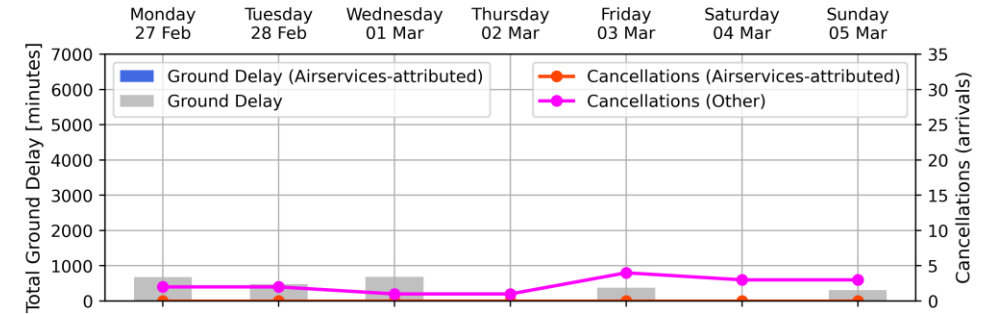
Weekly Airport Overview – Week starting 27 Feb 2023

Sydney KSA - Week starting 27 Feb 2023



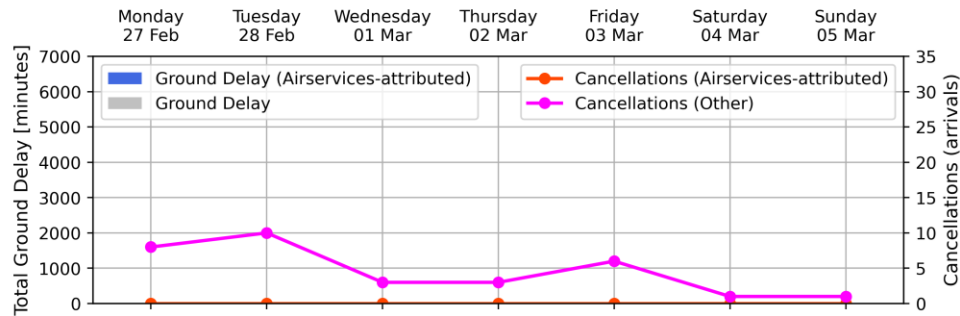
	Monday 27 Feb	Tuesday 28 Feb	Wednesday 01 Mar	Thursday 02 Mar	Friday 03 Mar	Saturday 04 Mar	Sunday 05 Mar
Arrivals	440	435	440	459	469	355	387
Total Movements	885	864	891	908	949	676	793
GDP Hours	17	7	17	8	17	10	7
GDP Compliance [%]							
- Qantas Group	86	87	87	88	87	96	82
- Jetstar	59	69	72	82	77	74	44
- Virgin Australia	86	79	82	89	83	85	87
- REX	93	86	86	84	85	68	84
- Other	75	57	75	83	81	71	60

Melbourne Airport - Week starting 27 Feb 2023



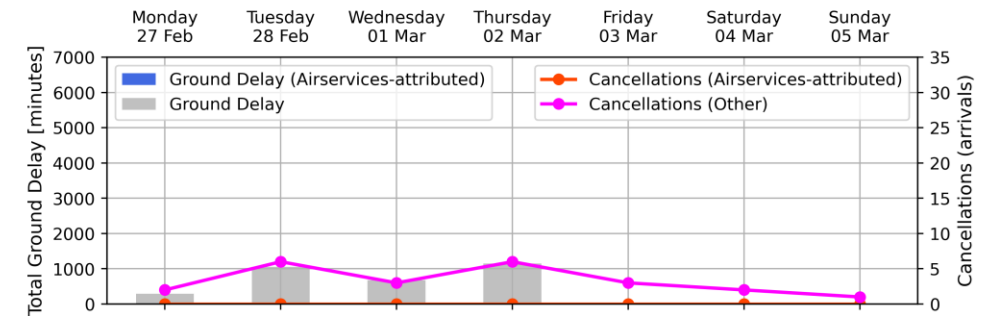
	Monday 27 Feb	Tuesday 28 Feb	Wednesday 01 Mar	Thursday 02 Mar	Friday 03 Mar	Saturday 04 Mar	Sunday 05 Mar
Arrivals	312	316	317	673	333	260	285
Total Movements	625	623	635	673	670	511	579
GDP Hours	9	10	9	No GDP	8	No GDP	5
GDP Compliance [%]							
- Qantas Group	88	87	86	N/A	80	N/A	87
- Jetstar	71	61	89	N/A	69	N/A	31
- Virgin Australia	91	81	82	N/A	71	N/A	72
- REX	87	73	73	N/A	92	N/A	62
- Other	100	0	100	N/A	50	N/A	100

Brisbane Airport - Week starting 27 Feb 2023



	Monday 27 Feb	Tuesday 28 Feb	Wednesday 01 Mar	Thursday 02 Mar	Friday 03 Mar	Saturday 04 Mar	Sunday 05 Mar
Arrivals	382	372	393	397	393	249	299
Total Movements	773	742	781	800	767	486	608
GDP Hours	No GDP	No GDP	No GDP	No GDP	No GDP	No GDP	No GDP
GDP compliance [%]	nan	nan	nan	nan	nan	nan	nan
- Qantas Group	N/A	N/A	N/A	N/A	N/A	N/A	N/A
- Jetstar	N/A	N/A	N/A	N/A	N/A	N/A	N/A
- Virgin Australia	N/A	N/A	N/A	N/A	N/A	N/A	N/A
- REX	N/A	N/A	N/A	N/A	N/A	N/A	N/A
- Other	N/A	N/A	N/A	N/A	N/A	N/A	N/A

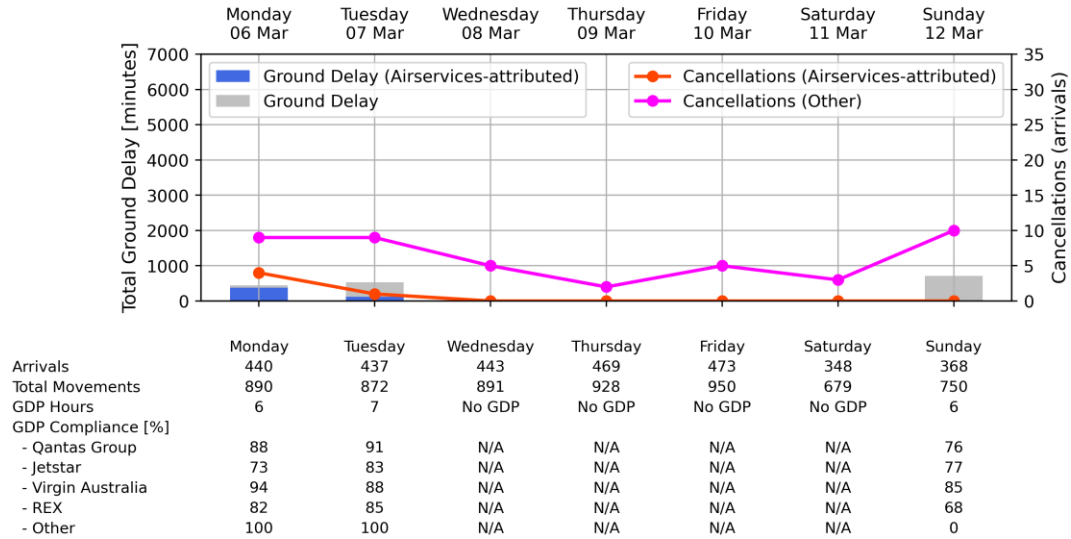
Perth Airport - Week starting 27 Feb 2023



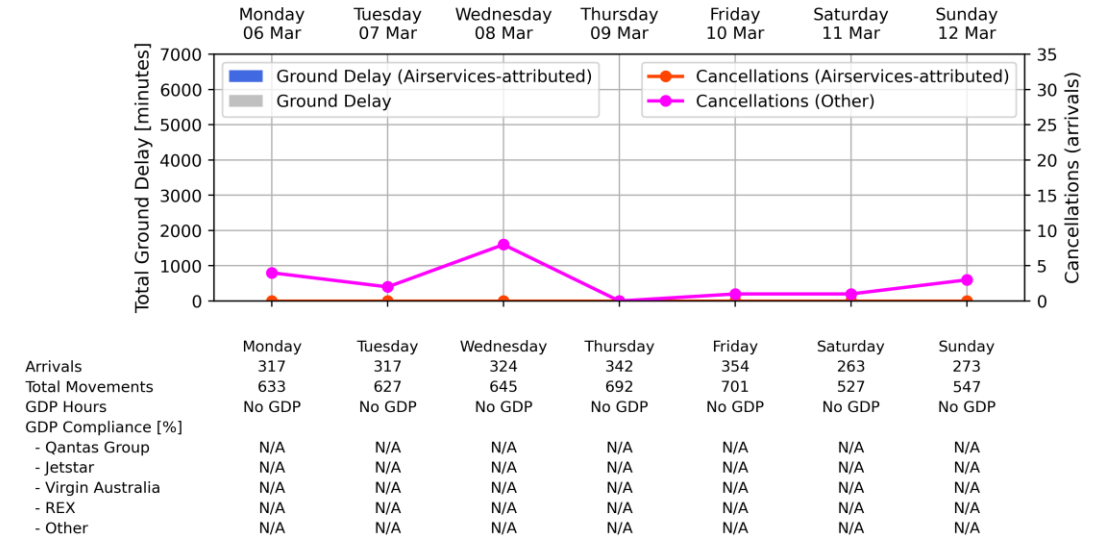
	Monday 27 Feb	Tuesday 28 Feb	Wednesday 01 Mar	Thursday 02 Mar	Friday 03 Mar	Saturday 04 Mar	Sunday 05 Mar
Arrivals	214	253	247	254	203	88	101
Total Movements	425	505	497	515	409	173	198
GDP Hours	7	15	7	15	No GDP	No GDP	No GDP
GDP Compliance [%]							
- Qantas Group	96	78	93	87	N/A	N/A	N/A
- Jetstar	N/A	100	N/A	N/A	N/A	N/A	N/A
- Virgin Australia	73	82	90	69	N/A	N/A	N/A
- REX	33	71	100	57	N/A	N/A	N/A
- Other	77	69	84	75	N/A	N/A	N/A

Weekly Airport Overview – Week starting 6 Mar 2023

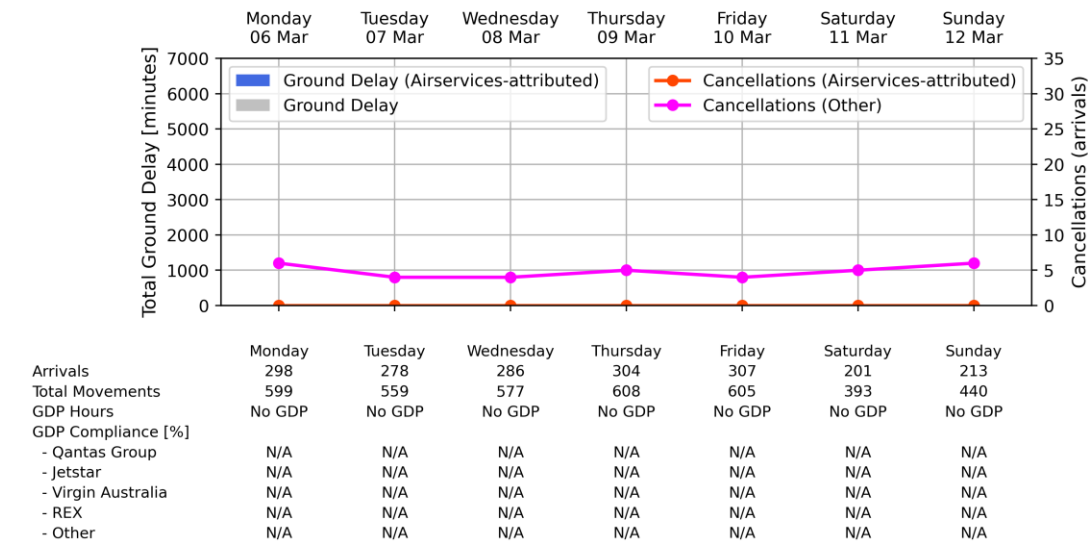
Sydney KSA - Week starting 06 Mar 2023



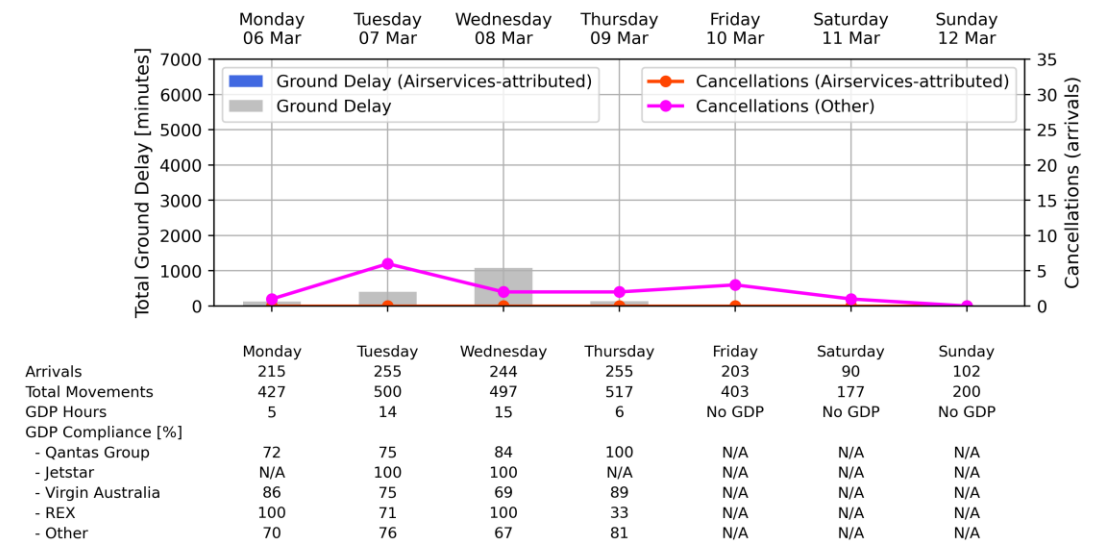
Melbourne Airport - Week starting 06 Mar 2023



Brisbane Airport - Week starting 06 Mar 2023

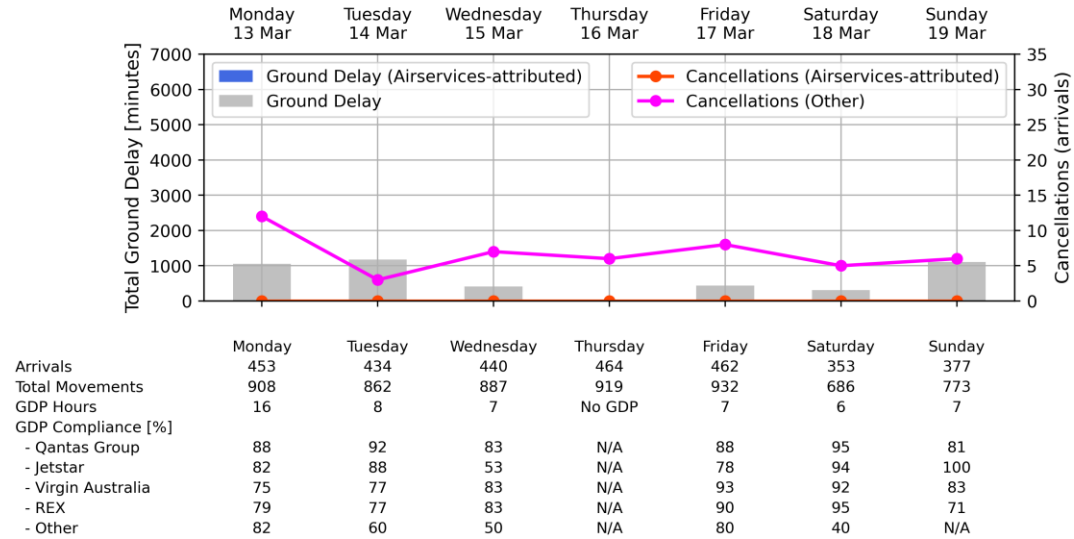


Perth Airport - Week starting 06 Mar 2023

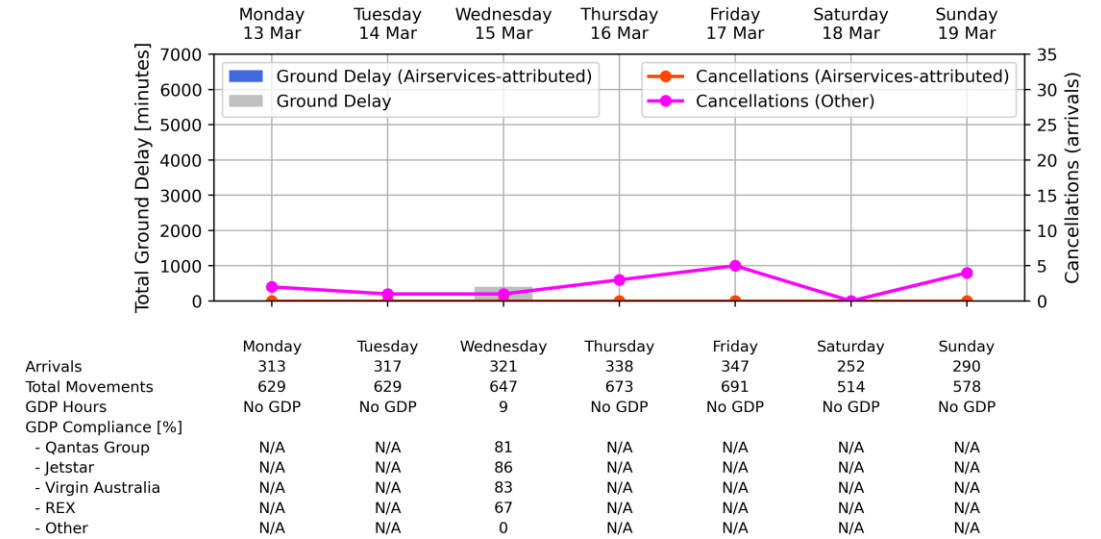


Weekly Airport Overview – Week starting 13 Mar 2023

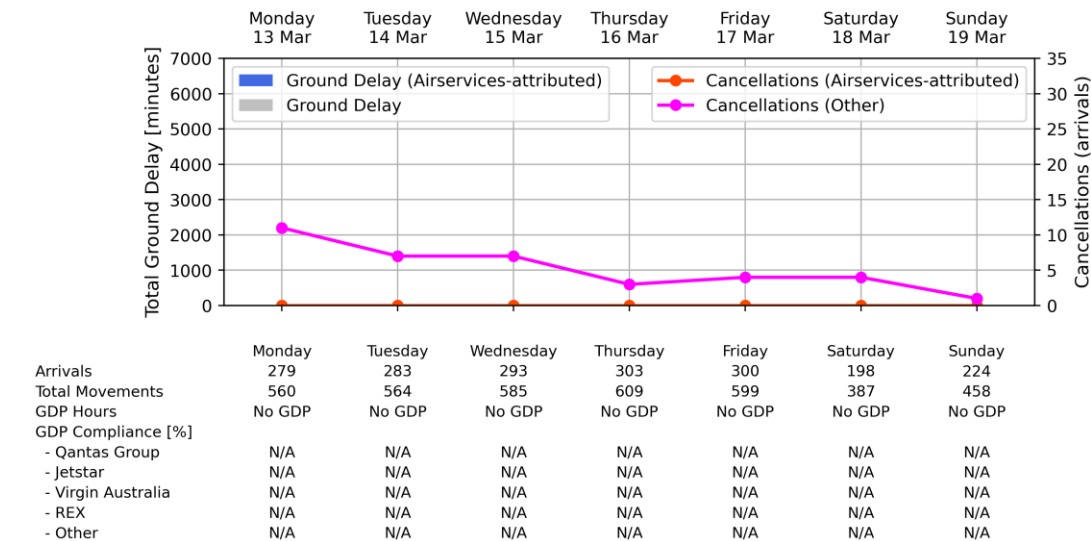
Sydney KSA - Week starting 13 Mar 2023



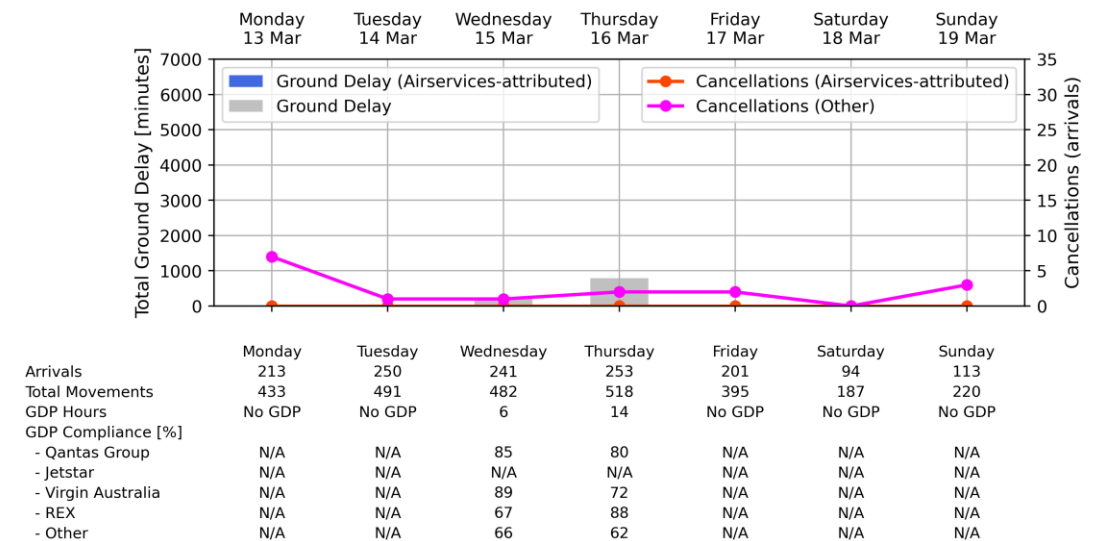
Melbourne Airport - Week starting 13 Mar 2023



Brisbane Airport - Week starting 13 Mar 2023

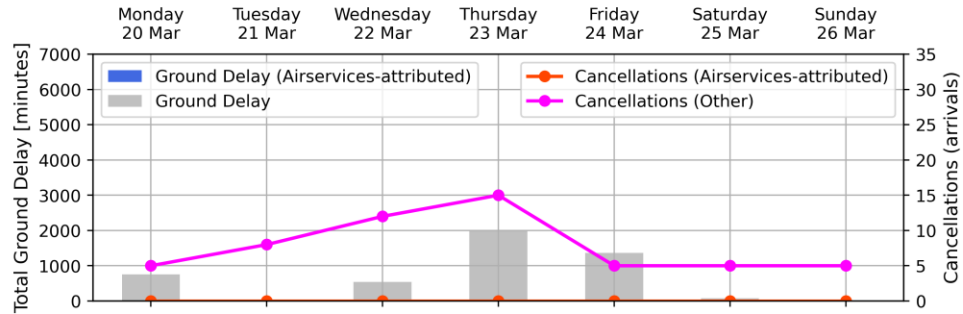


Perth Airport - Week starting 13 Mar 2023



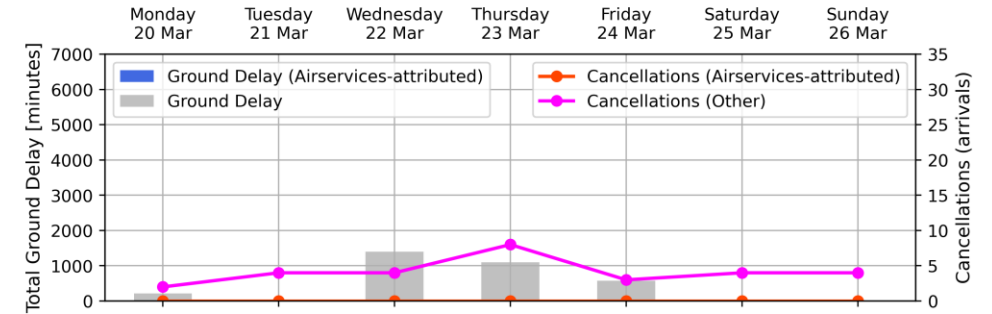
Weekly Airport Overview – Week starting 20 Mar 2023

Sydney KSA - Week starting 20 Mar 2023



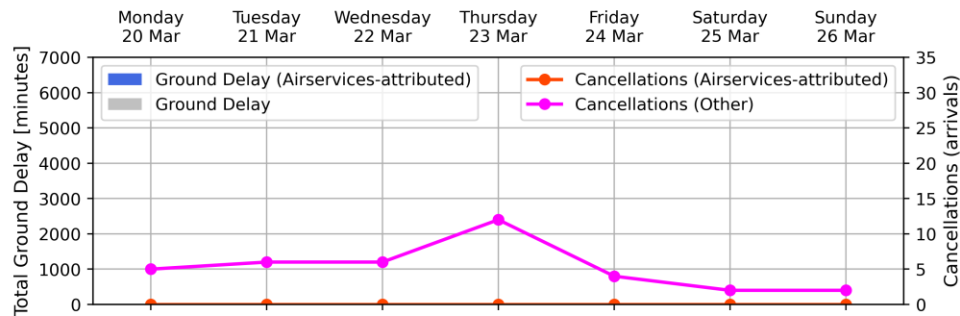
Arrivals	Monday	Tuesday	Wednesday	Thursday	Friday	Saturday	Sunday
	459	439	431	439	464	353	391
Total Movements	914	871	869	880	938	679	799
GDP Hours	11	No GDP	7	9	17	9	No GDP
GDP Compliance [%]							
- Qantas Group	86	N/A	72	81	80	94	N/A
- Jetstar	70	N/A	67	33	71	100	N/A
- Virgin Australia	95	N/A	73	51	71	83	N/A
- REX	83	N/A	96	63	87	90	N/A
- Other	100	N/A	67	100	78	N/A	N/A

Melbourne Airport - Week starting 20 Mar 2023



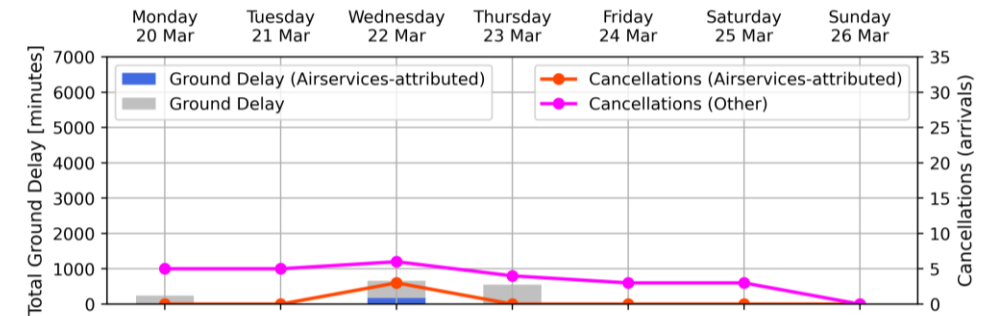
Arrivals	Monday	Tuesday	Wednesday	Thursday	Friday	Saturday	Sunday
	311	323	313	326	332	258	292
Total Movements	625	635	622	661	666	510	586
GDP Hours	8	No GDP	11	17	9	No GDP	No GDP
GDP Compliance [%]							
- Qantas Group	77	N/A	61	71	77	N/A	N/A
- Jetstar	81	N/A	75	64	65	N/A	N/A
- Virgin Australia	88	N/A	73	70	59	N/A	N/A
- REX	100	N/A	50	67	76	N/A	N/A
- Other	N/A	N/A	N/A	80	0	N/A	N/A

Brisbane Airport - Week starting 20 Mar 2023



Arrivals	Monday	Tuesday	Wednesday	Thursday	Friday	Saturday	Sunday
	300	277	291	298	308	196	229
Total Movements	605	558	577	599	609	383	470
GDP Hours	No GDP	No GDP	1	No GDP	No GDP	No GDP	No GDP
GDP Compliance [%]							
- Qantas Group	N/A	N/A	N/A	N/A	N/A	N/A	N/A
- Jetstar	N/A	N/A	N/A	N/A	N/A	N/A	N/A
- Virgin Australia	N/A	N/A	N/A	N/A	N/A	N/A	N/A
- REX	N/A	N/A	N/A	N/A	N/A	N/A	N/A
- Other	N/A	N/A	N/A	N/A	N/A	N/A	N/A

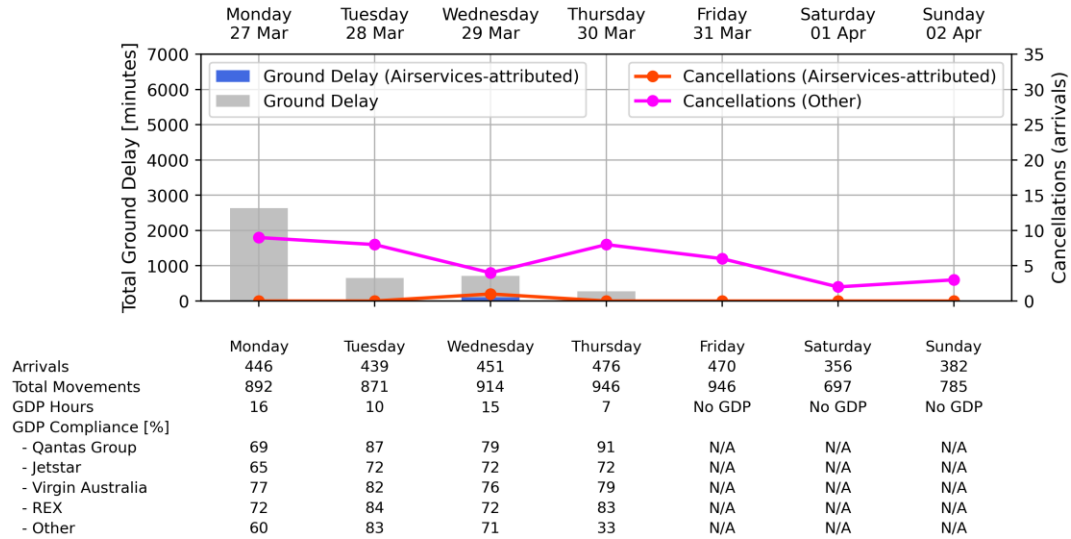
Perth Airport - Week starting 20 Mar 2023



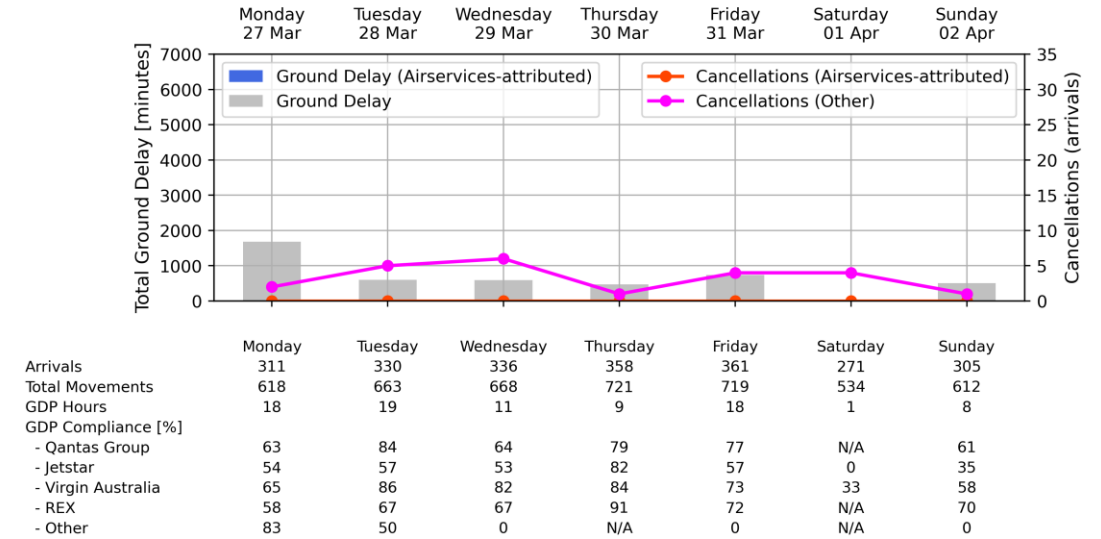
Arrivals	Monday	Tuesday	Wednesday	Thursday	Friday	Saturday	Sunday
	214	249	241	258	202	94	102
Total Movements	437	491	489	520	401	186	207
GDP Hours	5	No GDP	14	14	1	No GDP	No GDP
GDP Compliance [%]							
- Qantas Group	92	N/A	83	89	N/A	N/A	N/A
- Jetstar	N/A	N/A	100	N/A	N/A	N/A	N/A
- Virgin Australia	92	N/A	62	93	N/A	N/A	N/A
- REX	67	N/A	83	86	N/A	N/A	N/A
- Other	81	N/A	76	66	N/A	N/A	N/A

Weekly Airport Overview – Week starting 27 Mar 2023

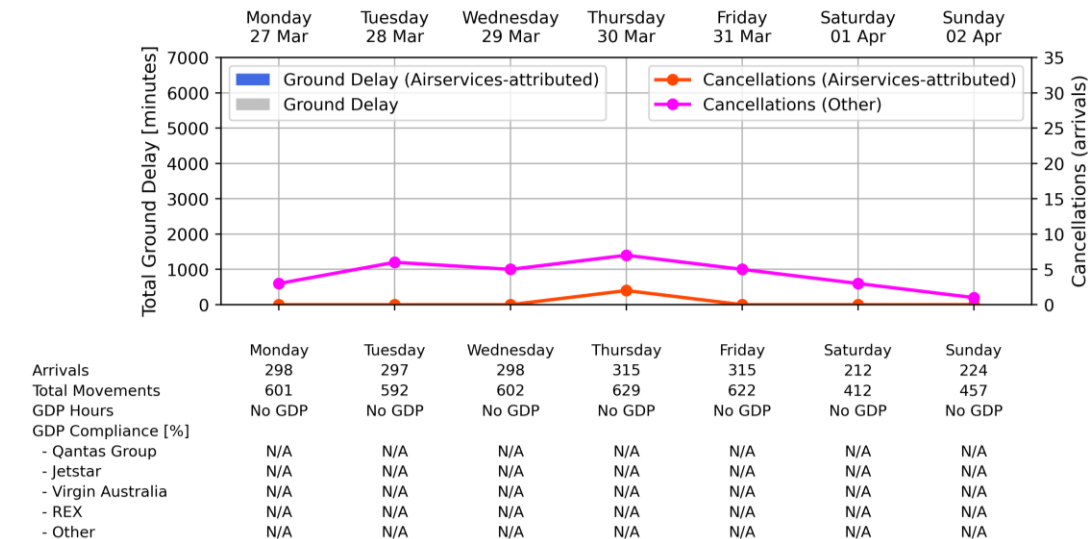
Sydney KSA - Week starting 27 Mar 2023



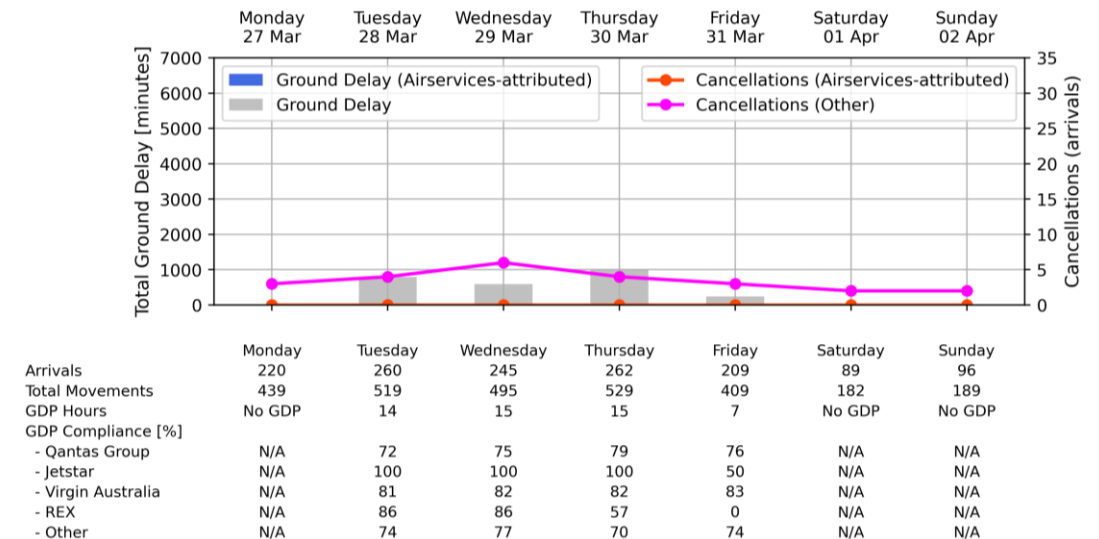
Melbourne Airport - Week starting 27 Mar 2023



Brisbane Airport - Week starting 27 Mar 2023

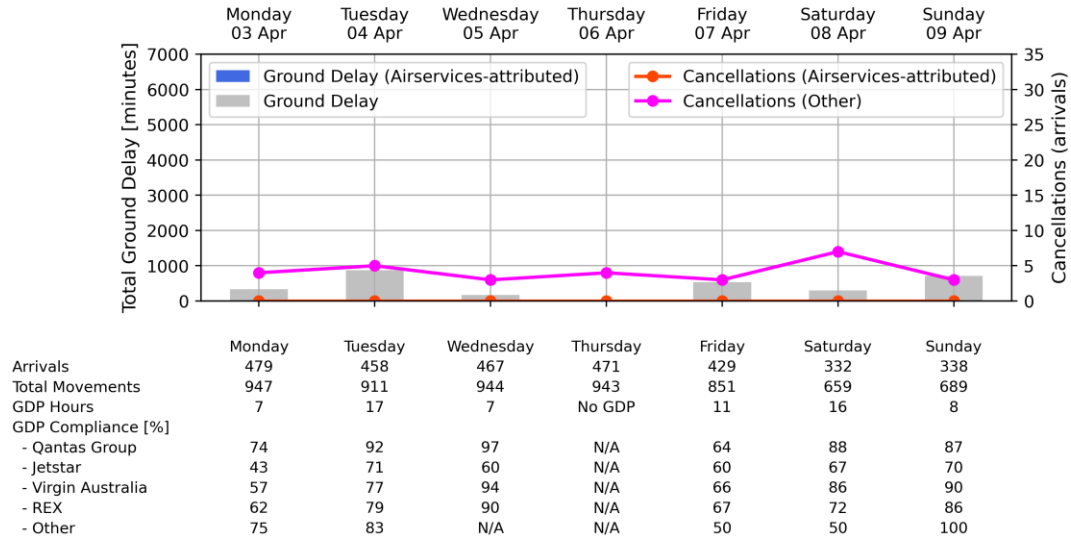


Perth Airport - Week starting 27 Mar 2023

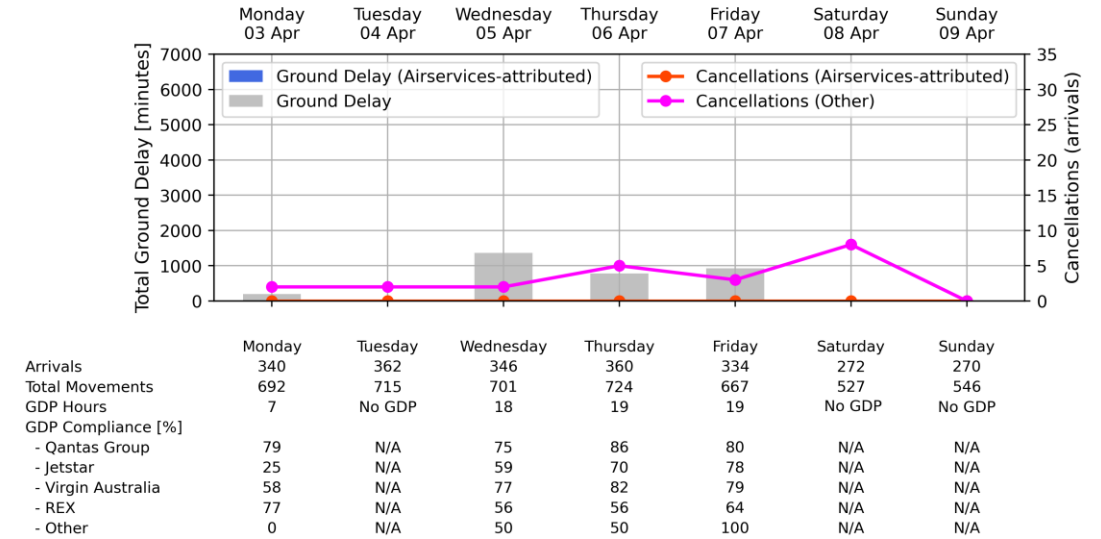


Weekly Airport Overview – Week starting 03 Apr 2023

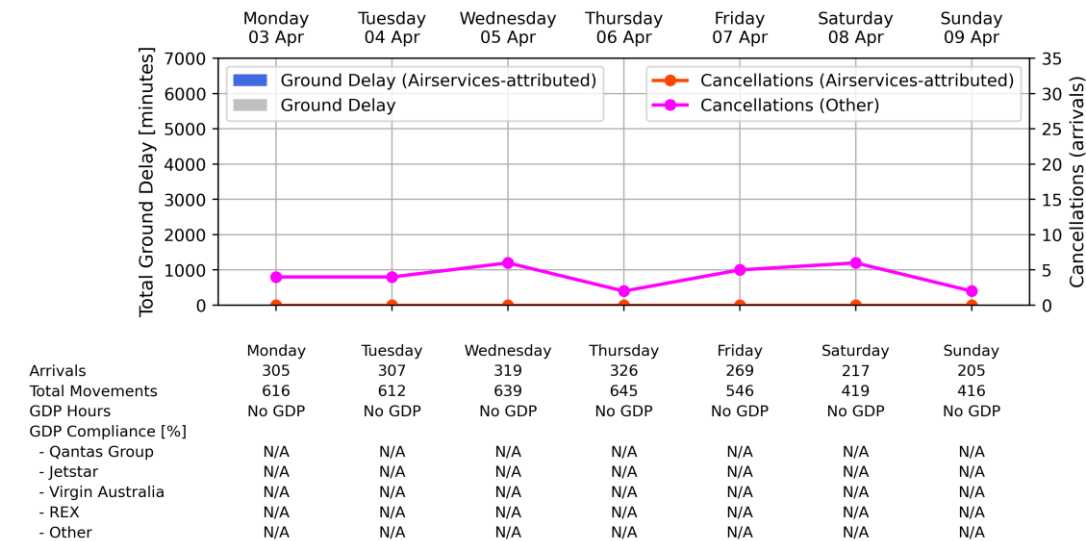
Sydney KSA - Week starting 03 Apr 2023



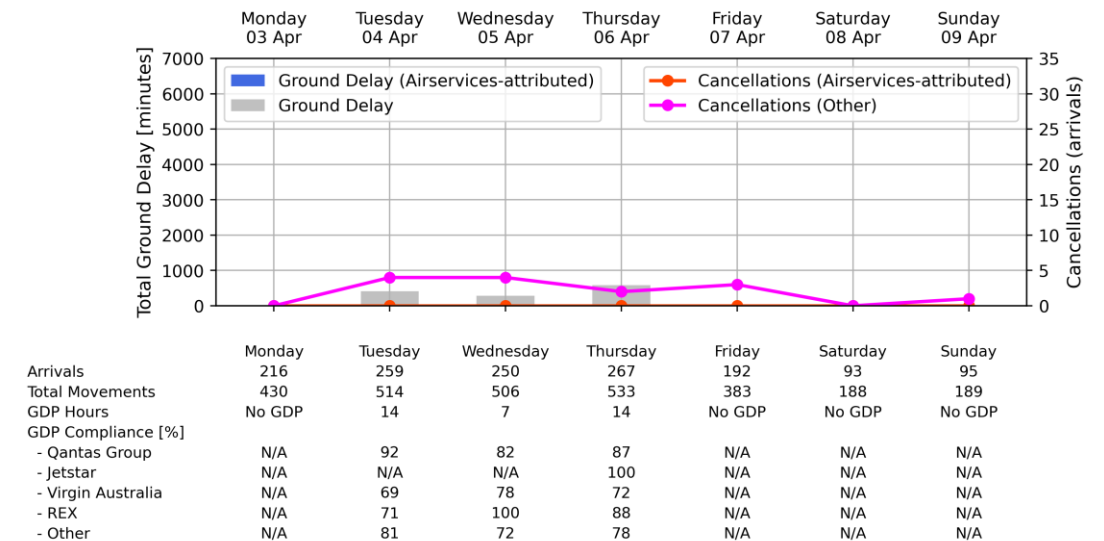
Melbourne Airport - Week starting 03 Apr 2023



Brisbane Airport - Week starting 03 Apr 2023

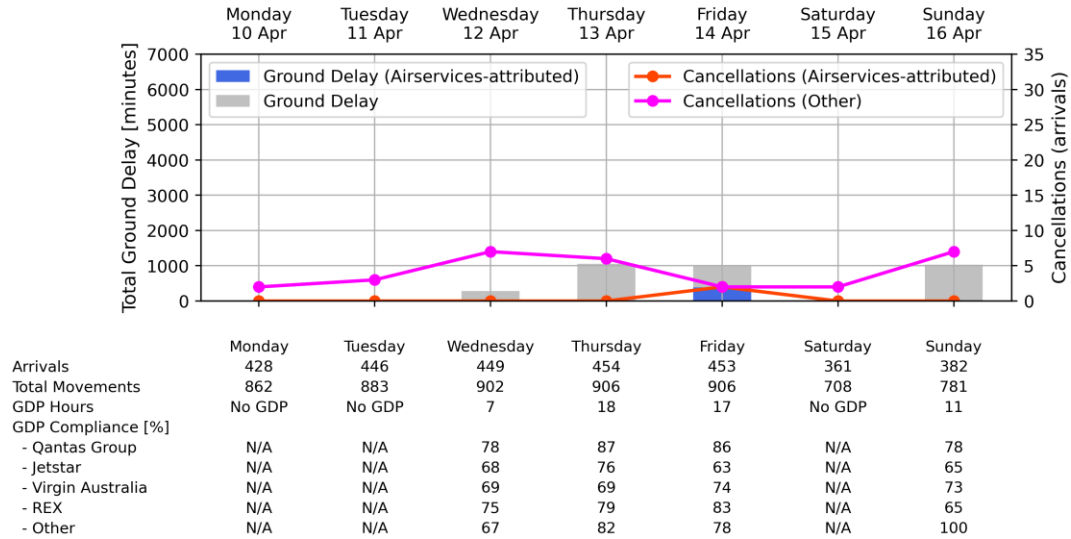


Perth Airport - Week starting 03 Apr 2023

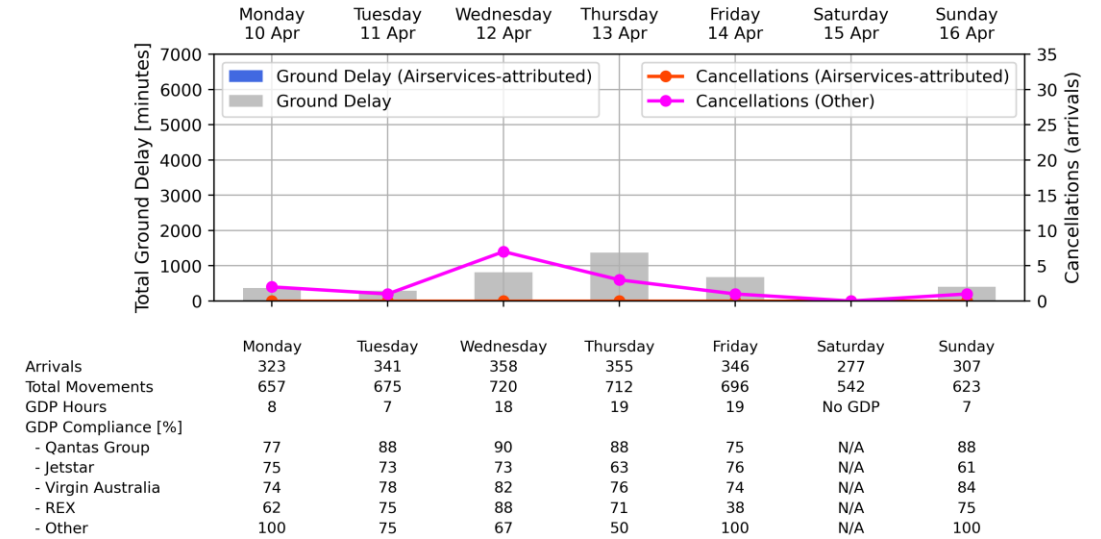


Weekly Airport Overview – Week starting 10 Apr 2023

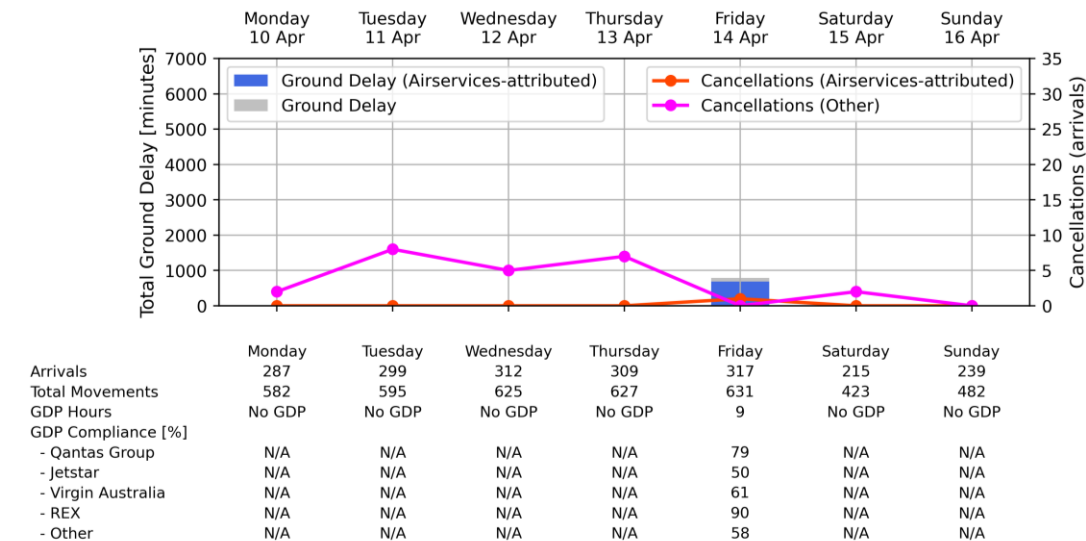
Sydney KSA - Week starting 10 Apr 2023



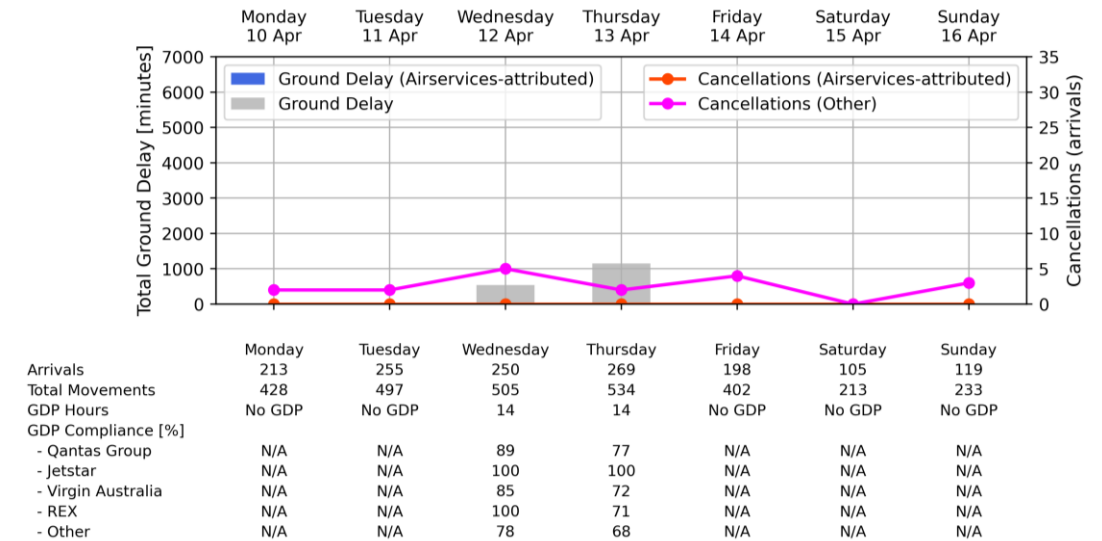
Melbourne Airport - Week starting 10 Apr 2023



Brisbane Airport - Week starting 10 Apr 2023

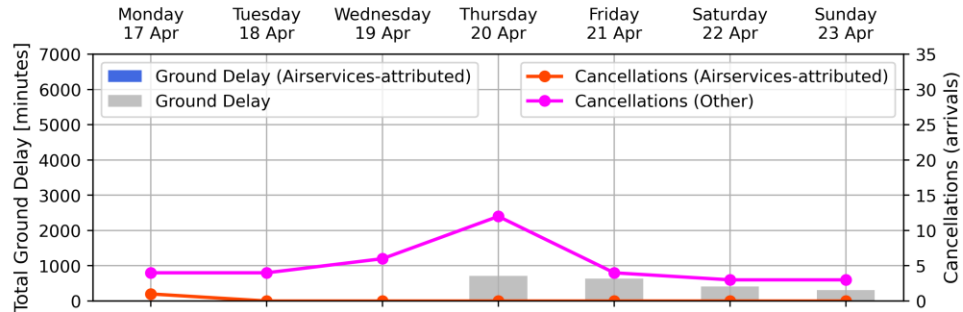


Perth Airport - Week starting 10 Apr 2023



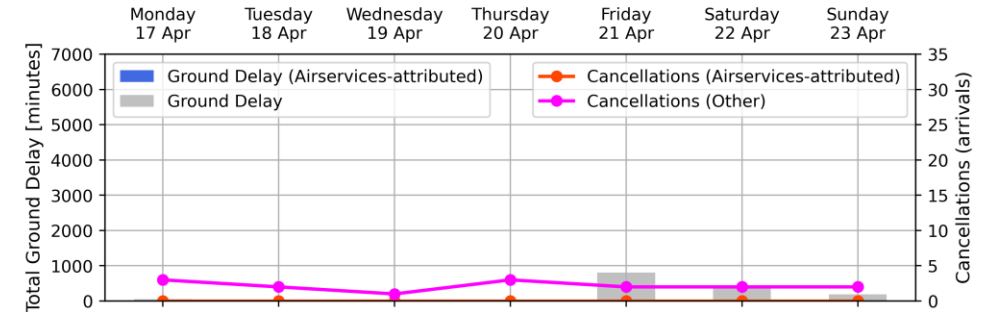
Weekly Airport Overview – Week starting 17 Apr 2023

Sydney KSA - Week starting 17 Apr 2023



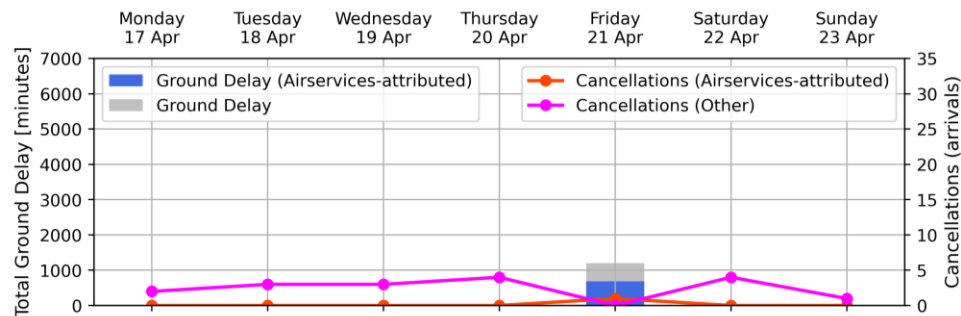
Arrivals	Monday	Tuesday	Wednesday	Thursday	Friday	Saturday	Sunday
Total Movements	450	435	441	456	476	356	391
GDP Hours	893	871	884	919	947	705	796
GDP Compliance [%]	No GDP	No GDP	No GDP	9	7	7	7
- Qantas Group	N/A	N/A	N/A	85	89	92	98
- Jetstar	N/A	N/A	N/A	68	79	81	70
- Virgin Australia	N/A	N/A	N/A	78	92	96	81
- REX	N/A	N/A	N/A	86	88	85	83
- Other	N/A	N/A	N/A	67	100	N/A	50

Melbourne Airport - Week starting 17 Apr 2023



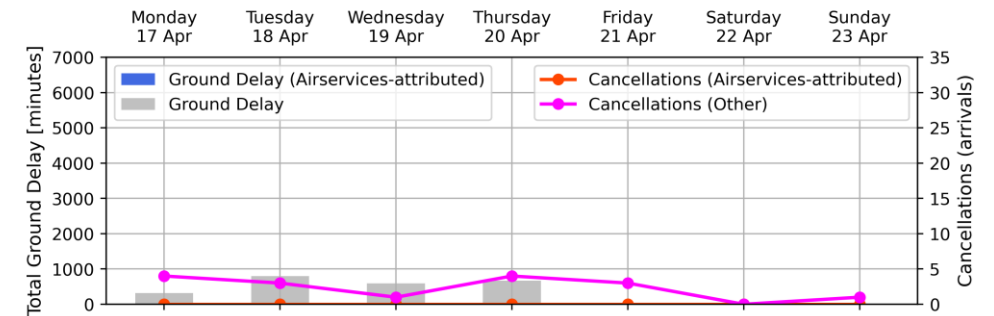
Arrivals	Monday	Tuesday	Wednesday	Thursday	Friday	Saturday	Sunday
Total Movements	340	342	346	357	355	287	305
GDP Hours	679	686	688	713	717	552	627
GDP Compliance [%]	8	No GDP	No GDP	No GDP	18	8	9
- Qantas Group	93	N/A	N/A	N/A	70	90	93
- Jetstar	60	N/A	N/A	N/A	65	60	69
- Virgin Australia	77	N/A	N/A	N/A	69	93	76
- REX	100	N/A	N/A	N/A	79	86	83
- Other	100	N/A	N/A	N/A	50	N/A	100

Brisbane Airport - Week starting 17 Apr 2023



Arrivals	Monday	Tuesday	Wednesday	Thursday	Friday	Saturday	Sunday
Total Movements	299	309	301	306	302	220	234
GDP Hours	606	608	607	621	603	426	474
GDP Compliance [%]	No GDP	No GDP	No GDP	No GDP	18	No GDP	No GDP
- Qantas Group	N/A	N/A	N/A	N/A	79	N/A	N/A
- Jetstar	N/A	N/A	N/A	N/A	53	N/A	N/A
- Virgin Australia	N/A	N/A	N/A	N/A	81	N/A	N/A
- REX	N/A	N/A	N/A	N/A	100	N/A	N/A
- Other	N/A	N/A	N/A	N/A	67	N/A	N/A

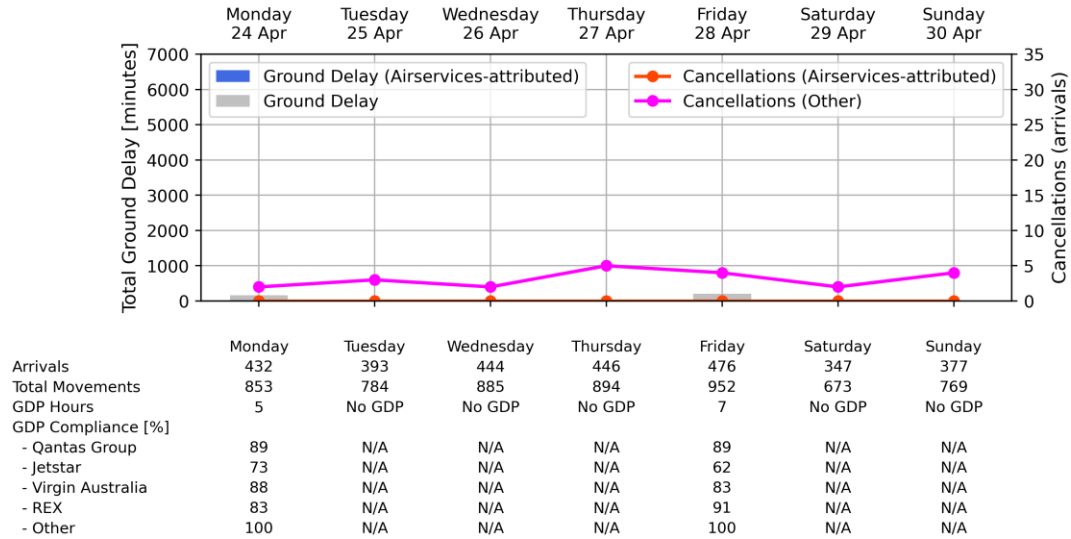
Perth Airport - Week starting 17 Apr 2023



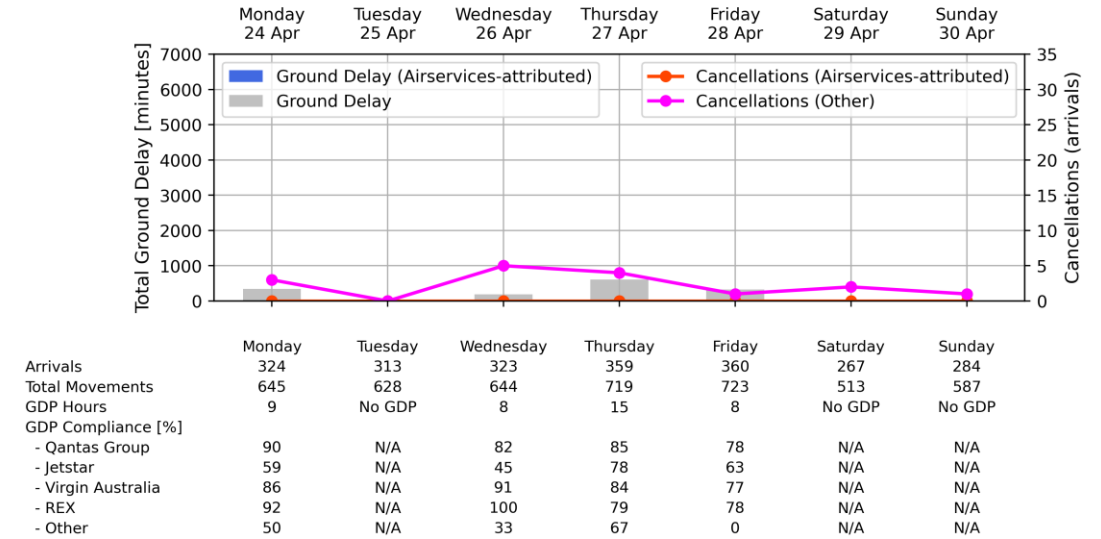
Arrivals	Monday	Tuesday	Wednesday	Thursday	Friday	Saturday	Sunday
Total Movements	218	261	252	267	209	90	110
GDP Hours	443	520	503	535	414	186	216
GDP Compliance [%]	6	14	14	14	No GDP	No GDP	No GDP
- Qantas Group	83	81	84	83	N/A	N/A	N/A
- Jetstar	N/A	100	100	100	N/A	N/A	N/A
- Virgin Australia	69	88	79	85	N/A	N/A	N/A
- REX	67	75	71	75	N/A	N/A	N/A
- Other	72	71	83	72	N/A	N/A	N/A

Weekly Airport Overview – Week starting 24 Apr 2023

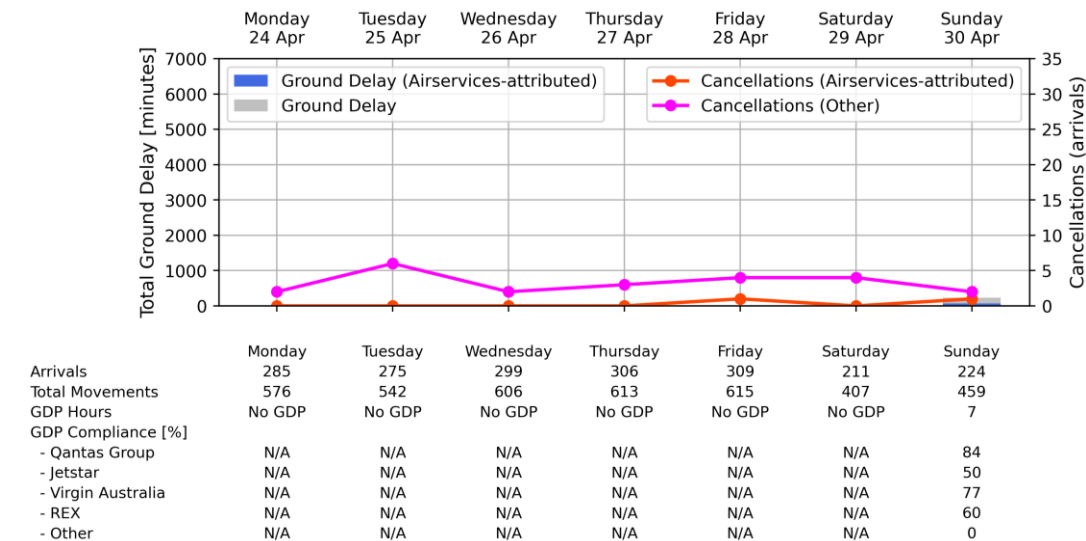
Sydney KSA - Week starting 24 Apr 2023



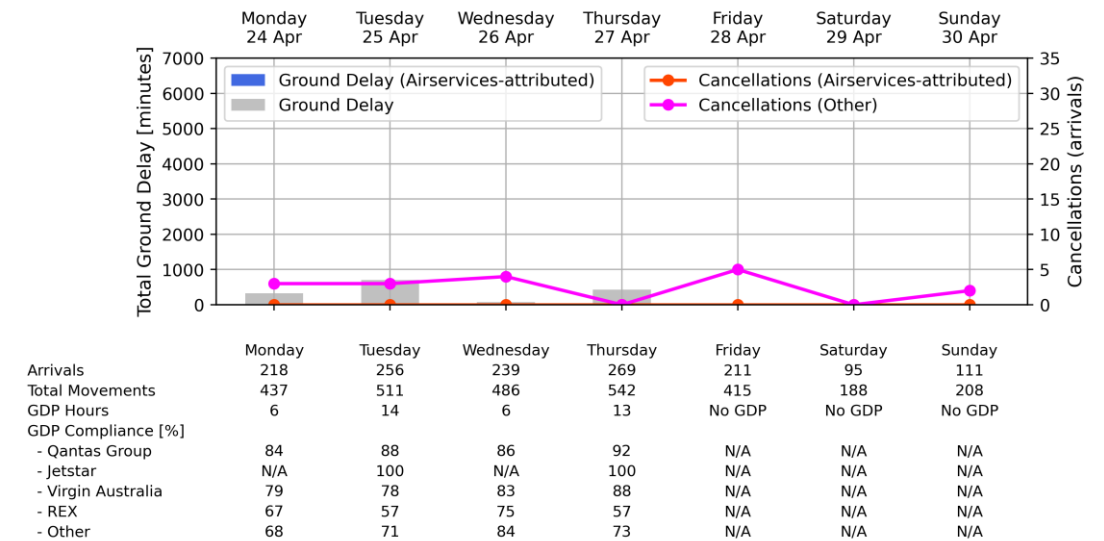
Melbourne Airport - Week starting 24 Apr 2023



Brisbane Airport - Week starting 24 Apr 2023

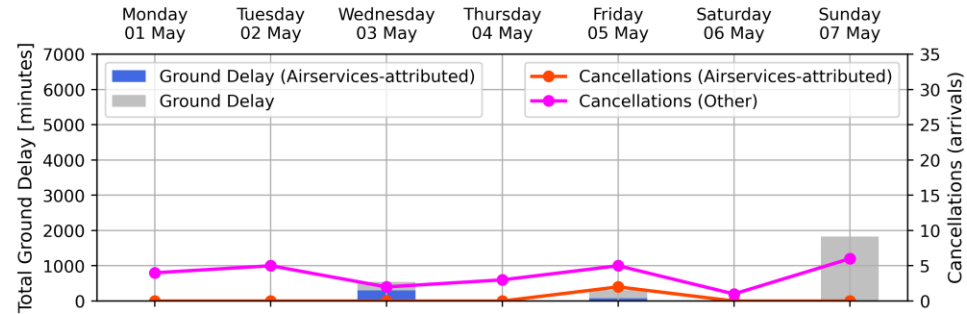


Perth Airport - Week starting 24 Apr 2023



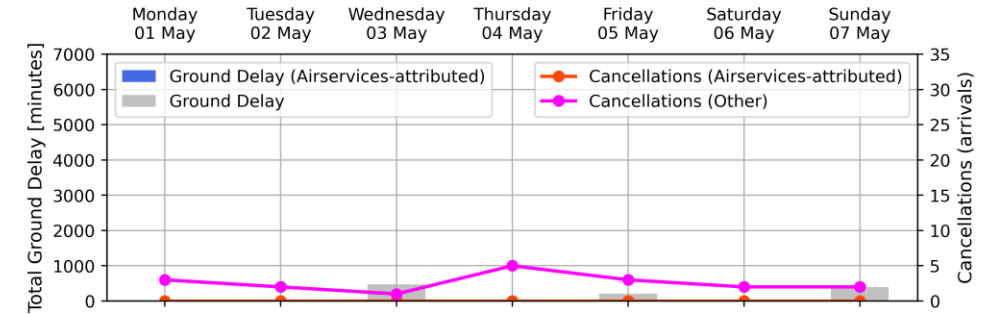
Weekly Airport Overview – Week starting 01 May 2023

Sydney KSA - Week starting 01 May 2023



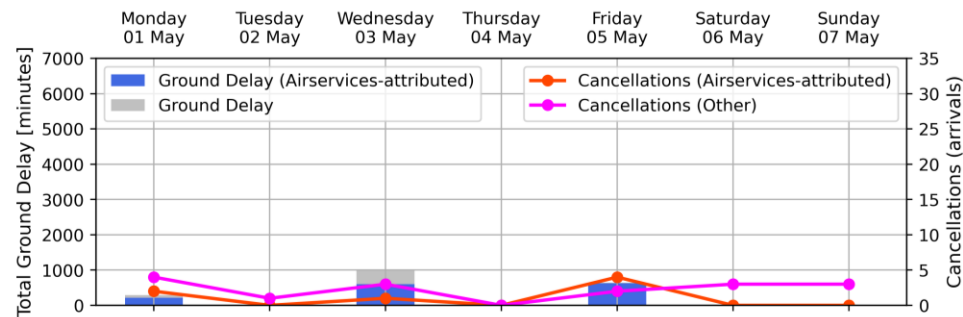
Arrivals	Monday	Tuesday	Wednesday	Thursday	Friday	Saturday	Sunday
Total Movements	data unavailable		441	454	459	342	343
GDP Hours	No GDP	No GDP	7	No GDP	7	No GDP	11
GDP Compliance [%]							
- Qantas Group	N/A	N/A	87	N/A	80	N/A	93
- Jetstar	N/A	N/A	59	N/A	81	N/A	77
- Virgin Australia	N/A	N/A	87	N/A	78	N/A	78
- REX	N/A	N/A	95	N/A	78	N/A	77
- Other	N/A	N/A	57	N/A	50	N/A	100

Melbourne Airport - Week starting 01 May 2023



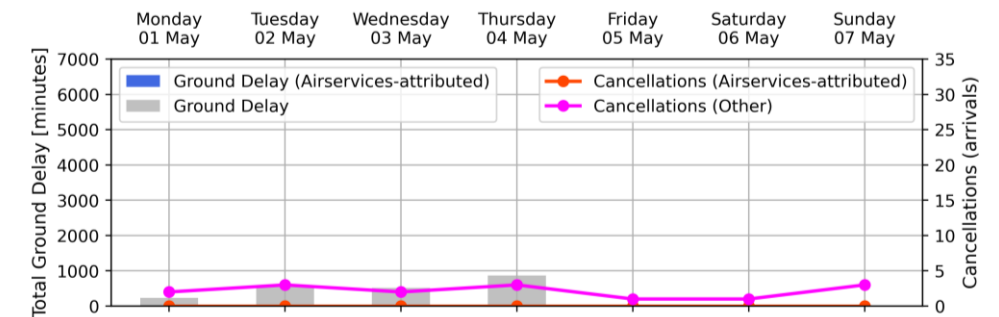
Arrivals	Monday	Tuesday	Wednesday	Thursday	Friday	Saturday	Sunday
Total Movements	data unavailable		331	340	354	258	292
GDP Hours	No GDP	No GDP	10	No GDP	8	No GDP	8
GDP Compliance [%]							
- Qantas Group	N/A	N/A	90	N/A	54	N/A	87
- Jetstar	N/A	N/A	65	N/A	67	N/A	55
- Virgin Australia	N/A	N/A	89	N/A	79	N/A	71
- REX	N/A	N/A	71	N/A	67	N/A	80
- Other	N/A	N/A	0	N/A	100	N/A	50

Brisbane Airport - Week starting 01 May 2023



Arrivals	Monday	Tuesday	Wednesday	Thursday	Friday	Saturday	Sunday
Total Movements	data unavailable		310	317	312	195	226
GDP Hours	8	No GDP	18	No GDP	9	No GDP	No GDP
GDP Compliance [%]							
- Qantas Group	data unavailable	N/A	80	N/A	71	N/A	N/A
- Jetstar		N/A	42	N/A	67	N/A	N/A
- Virgin Australia		N/A	84	N/A	76	N/A	N/A
- REX		N/A	79	N/A	78	N/A	N/A
- Other		N/A	53	N/A	69	N/A	N/A

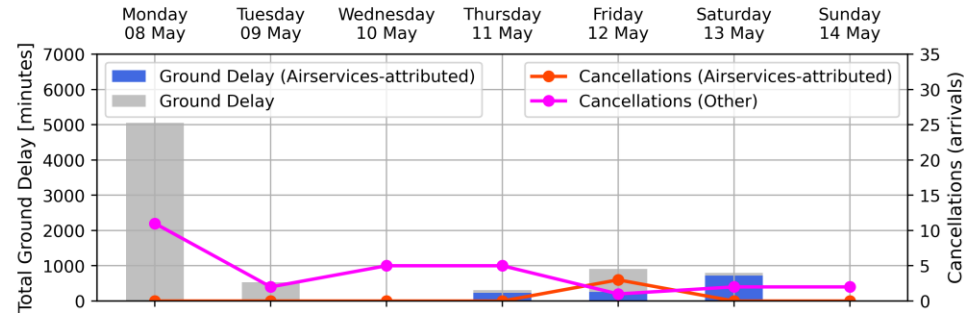
Perth Airport - Week starting 01 May 2023



Arrivals	Monday	Tuesday	Wednesday	Thursday	Friday	Saturday	Sunday
Total Movements	data unavailable		252	271	206	92	103
GDP Hours	6	14	14	14	No GDP	No GDP	No GDP
GDP Compliance [%]							
- Qantas Group			83	88	N/A	N/A	N/A
- Jetstar			0	0	N/A	N/A	N/A
- Virgin Australia			82	78	N/A	N/A	N/A
- REX			100	43	N/A	N/A	N/A
- Other			69	83	N/A	N/A	N/A

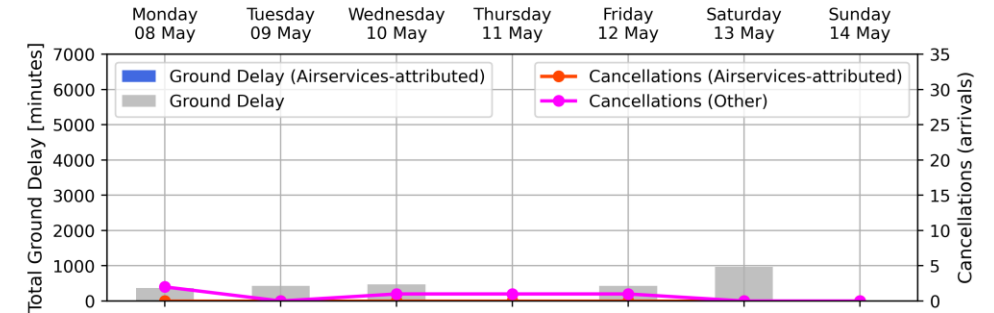
Weekly Airport Overview – Week starting 08 May 2023

Sydney KSA - Week starting 08 May 2023



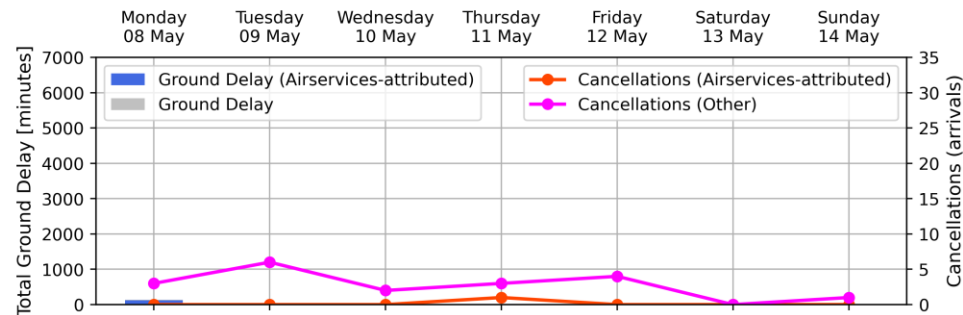
Arrivals	Monday	Tuesday	Wednesday	Thursday	Friday	Saturday	Sunday
Total Movements	413	428	441	456	467	334	363
GDP Hours	818	857	883	916	935	648	741
GDP Compliance [%]	18	7	No GDP	7	17	6	No GDP
- Qantas Group	80	86	N/A	88	88	94	N/A
- Jetstar	57	88	N/A	79	79	71	N/A
- Virgin Australia	84	71	N/A	95	90	89	N/A
- REX	73	96	N/A	96	80	88	N/A
- Other	75	60	N/A	67	78	N/A	N/A

Melbourne Airport - Week starting 08 May 2023



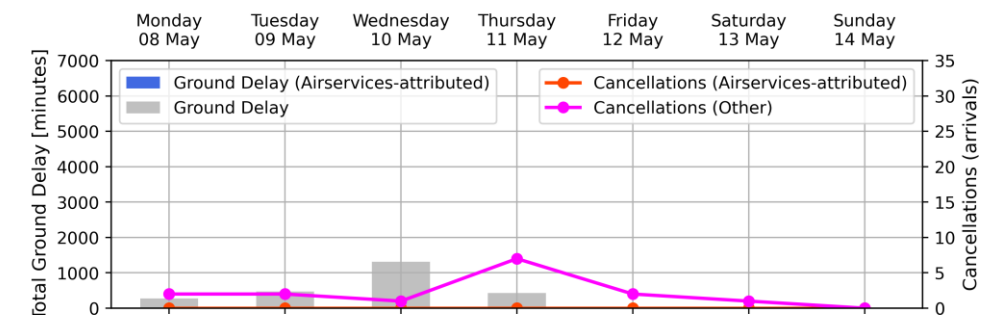
Arrivals	Monday	Tuesday	Wednesday	Thursday	Friday	Saturday	Sunday
Total Movements	315	328	326	340	349	258	284
GDP Hours	631	649	651	686	700	501	584
GDP Compliance [%]	7	9	10	No GDP	8	6	No GDP
- Qantas Group	74	81	85	N/A	93	92	N/A
- Jetstar	61	75	88	N/A	56	100	N/A
- Virgin Australia	72	82	84	N/A	57	100	N/A
- REX	60	73	71	N/A	90	75	N/A
- Other	50	100	0	N/A	0	N/A	N/A

Brisbane Airport - Week starting 08 May 2023



Arrivals	Monday	Tuesday	Wednesday	Thursday	Friday	Saturday	Sunday
Total Movements	301	311	301	309	316	204	228
GDP Hours	599	612	609	629	635	396	465
GDP Compliance [%]	9	No GDP	No GDP	No GDP	No GDP	No GDP	No GDP
- Qantas Group	89	N/A	N/A	N/A	N/A	N/A	N/A
- Jetstar	50	N/A	N/A	N/A	N/A	N/A	N/A
- Virgin Australia	54	N/A	N/A	N/A	N/A	N/A	N/A
- REX	67	N/A	N/A	N/A	N/A	N/A	N/A
- Other	38	N/A	N/A	N/A	N/A	N/A	N/A

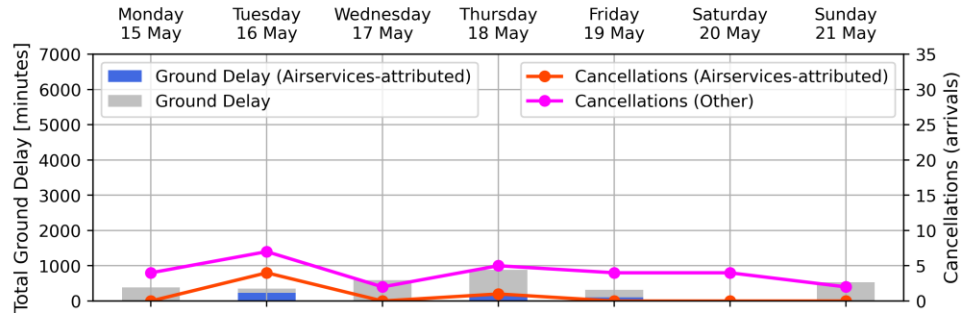
Perth Airport - Week starting 08 May 2023



Arrivals	Monday	Tuesday	Wednesday	Thursday	Friday	Saturday	Sunday
Total Movements	220	266	239	263	207	91	103
GDP Hours	440	526	489	526	409	187	196
GDP Compliance [%]	8	14	16	14	No GDP	No GDP	No GDP
- Qantas Group	88	87	86	84	N/A	N/A	N/A
- Jetstar	N/A	N/A	100	100	N/A	N/A	N/A
- Virgin Australia	65	79	74	82	N/A	N/A	N/A
- REX	50	71	62	67	N/A	N/A	N/A
- Other	59	82	76	80	N/A	N/A	N/A

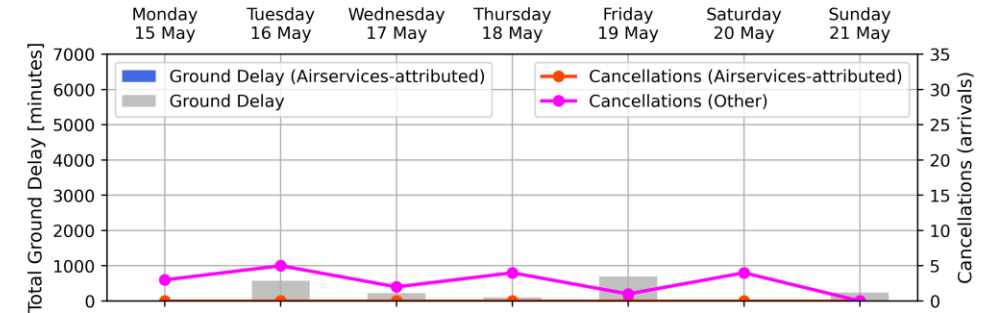
Weekly Airport Overview – Week starting 15 May 2023

Sydney KSA - Week starting 15 May 2023



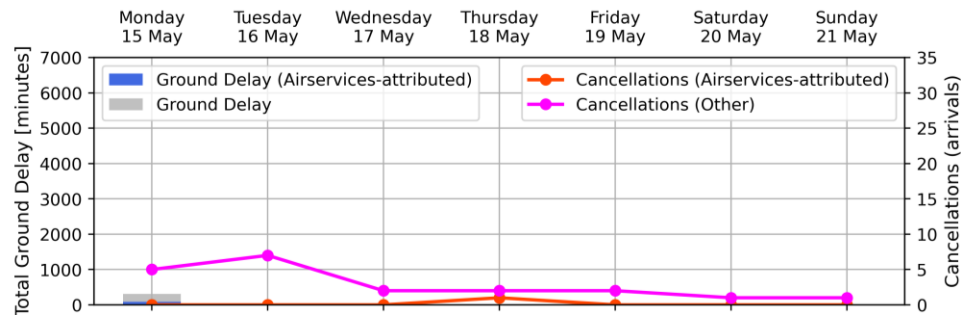
	Monday 15 May	Tuesday 16 May	Wednesday 17 May	Thursday 18 May	Friday 19 May	Saturday 20 May	Sunday 21 May
Arrivals	450	416	427	448	461	341	364
Total Movements	891	836	860	896	931	658	741
GDP Hours	9	6	6	17	8	No GDP	11
GDP Compliance [%]							
- Qantas Group	78	62	96	90	87	N/A	83
- Jetstar	62	93	93	83	65	N/A	70
- Virgin Australia	79	81	97	90	72	N/A	83
- REX	85	89	84	85	86	N/A	79
- Other	100	50	67	91	33	N/A	0

Melbourne Airport - Week starting 15 May 2023



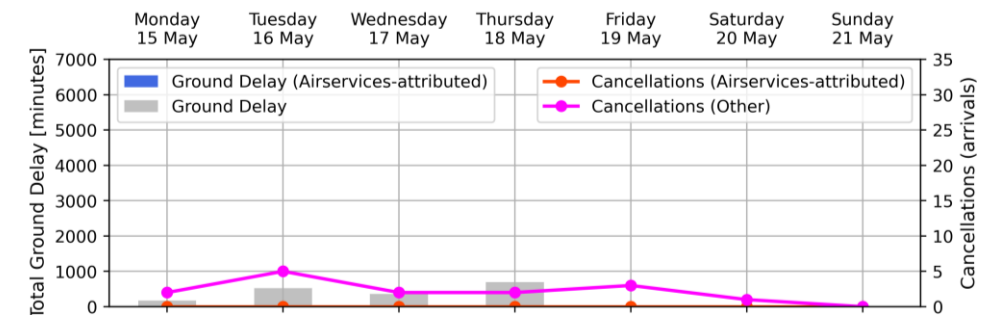
	Monday 15 May	Tuesday 16 May	Wednesday 17 May	Thursday 18 May	Friday 19 May	Saturday 20 May	Sunday 21 May
Arrivals	328	317	326	336	351	265	295
Total Movements	656	628	651	675	704	518	604
GDP Hours	No GDP	10	9	10	18	No GDP	7
GDP Compliance [%]							
- Qantas Group	N/A	74	90	90	75	N/A	76
- Jetstar	N/A	75	73	100	70	N/A	64
- Virgin Australia	N/A	86	88	71	78	N/A	71
- REX	N/A	50	91	100	91	N/A	67
- Other	N/A	50	100	N/A	100	N/A	50

Brisbane Airport - Week starting 15 May 2023



	Monday 15 May	Tuesday 16 May	Wednesday 17 May	Thursday 18 May	Friday 19 May	Saturday 20 May	Sunday 21 May
Arrivals	289	300	303	321	319	203	227
Total Movements	588	591	611	641	636	395	466
GDP Hours	10	No GDP	No GDP	No GDP	No GDP	No GDP	No GDP
GDP Compliance [%]							
- Qantas Group	62	N/A	N/A	N/A	N/A	N/A	N/A
- Jetstar	42	N/A	N/A	N/A	N/A	N/A	N/A
- Virgin Australia	89	N/A	N/A	N/A	N/A	N/A	N/A
- REX	50	N/A	N/A	N/A	N/A	N/A	N/A
- Other	82	N/A	N/A	N/A	N/A	N/A	N/A

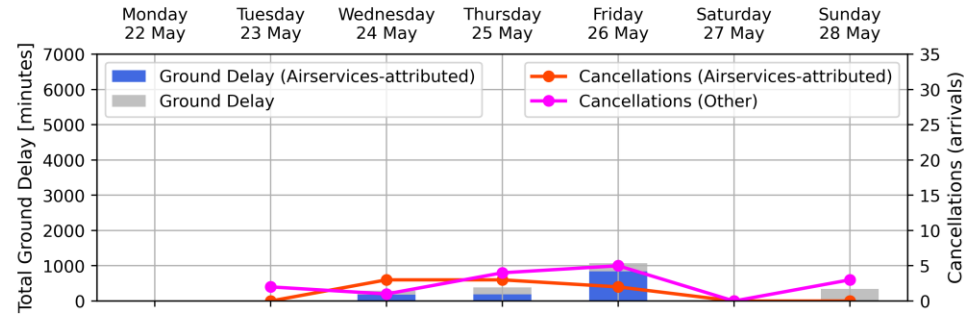
Perth Airport - Week starting 15 May 2023



	Monday 15 May	Tuesday 16 May	Wednesday 17 May	Thursday 18 May	Friday 19 May	Saturday 20 May	Sunday 21 May
Arrivals	219	262	240	271	202	90	106
Total Movements	436	518	490	541	404	181	211
GDP Hours	6	14	14	14	1	No GDP	No GDP
GDP Compliance [%]							
- Qantas Group	80	80	88	85	N/A	N/A	N/A
- Jetstar	N/A	100	100	100	N/A	N/A	N/A
- Virgin Australia	69	87	69	79	N/A	N/A	N/A
- REX	67	100	86	80	N/A	N/A	N/A
- Other	59	82	83	74	N/A	N/A	N/A

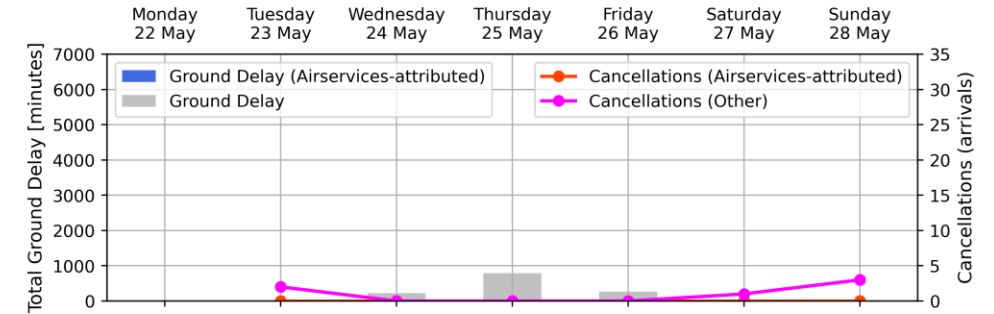
Weekly Airport Overview – Week starting 22 May 2023

Sydney KSA - Week starting 22 May 2023



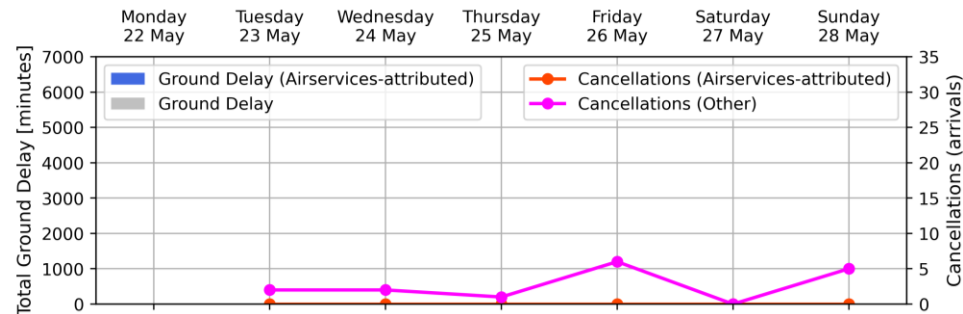
Arrivals	Monday	Tuesday	Wednesday	Thursday	Friday	Saturday	Sunday
Total Movements	data unavailable	432	440	458	449	345	379
GDP Hours	data unavailable	No GDP	9	6	18	No GDP	6
GDP Compliance [%]	data unavailable						
- Qantas Group	data unavailable	N/A	79	81	75	N/A	74
- Jetstar	data unavailable	N/A	86	71	73	N/A	71
- Virgin Australia	data unavailable	N/A	86	87	83	N/A	79
- REX	data unavailable	N/A	84	71	82	N/A	87
- Other	data unavailable	N/A	75	67	70	N/A	100

Melbourne Airport - Week starting 22 May 2023



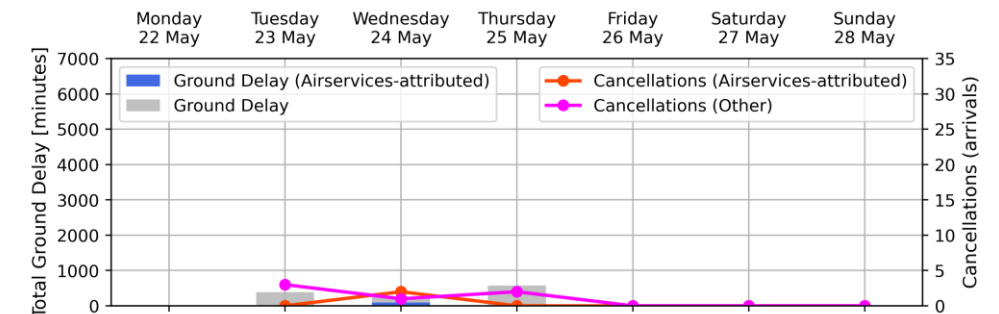
Arrivals	Monday	Tuesday	Wednesday	Thursday	Friday	Saturday	Sunday
Total Movements	data unavailable	328	330	330	356	258	292
GDP Hours	data unavailable	No GDP	7	18	9	No GDP	No GDP
GDP Compliance [%]	data unavailable						
- Qantas Group	data unavailable	N/A	89	76	80	N/A	N/A
- Jetstar	data unavailable	N/A	75	70	54	N/A	N/A
- Virgin Australia	data unavailable	N/A	78	78	71	N/A	N/A
- REX	data unavailable	N/A	100	75	80	N/A	N/A
- Other	data unavailable	N/A	100	50	67	N/A	N/A

Brisbane Airport - Week starting 22 May 2023



Arrivals	Monday	Tuesday	Wednesday	Thursday	Friday	Saturday	Sunday
Total Movements	data unavailable	305	307	312	304	200	226
GDP Hours	data unavailable	604	614	626	606	389	466
GDP Compliance [%]	data unavailable	No GDP	No GDP	No GDP	No GDP	No GDP	No GDP
- Qantas Group	data unavailable	N/A	N/A	N/A	N/A	N/A	N/A
- Jetstar	data unavailable	N/A	N/A	N/A	N/A	N/A	N/A
- Virgin Australia	data unavailable	N/A	N/A	N/A	N/A	N/A	N/A
- REX	data unavailable	N/A	N/A	N/A	N/A	N/A	N/A
- Other	data unavailable	N/A	N/A	N/A	N/A	N/A	N/A

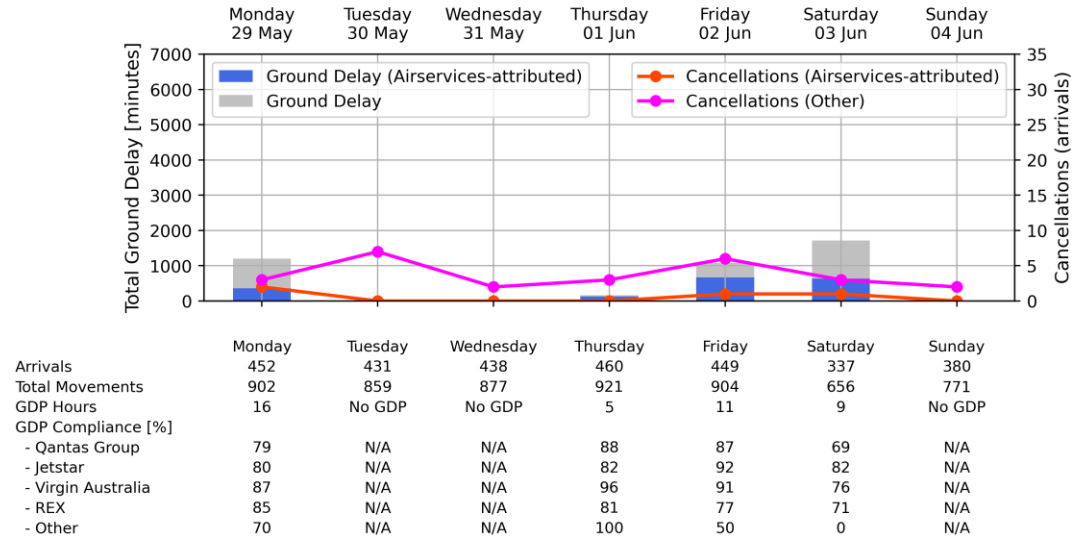
Perth Airport - Week starting 22 May 2023



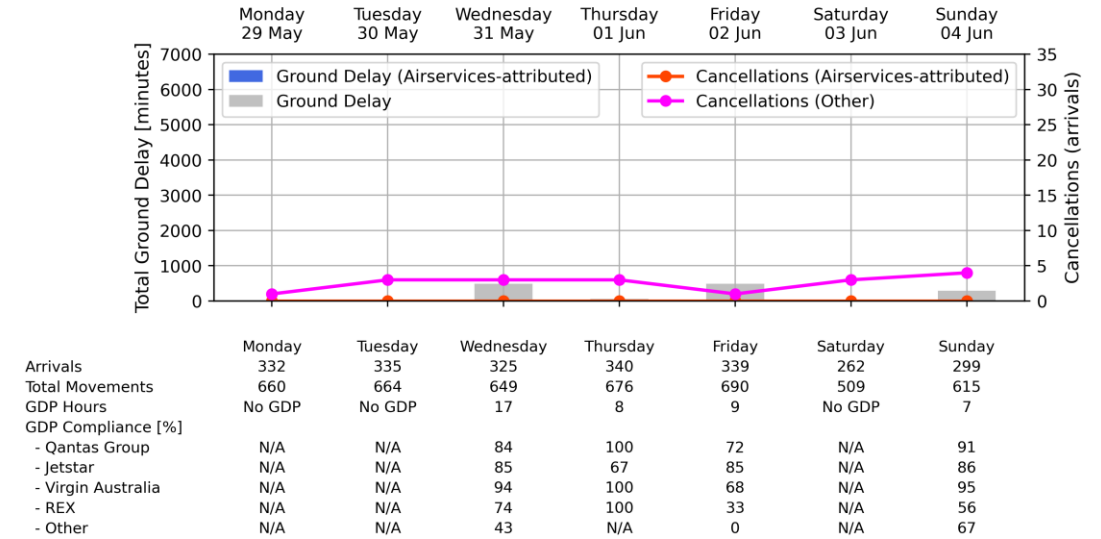
Arrivals	Monday	Tuesday	Wednesday	Thursday	Friday	Saturday	Sunday
Total Movements	data unavailable	255	250	265	209	97	100
GDP Hours	data unavailable	506	493	531	416	196	194
GDP Compliance [%]	data unavailable	14	6	14	No GDP	No GDP	No GDP
- Qantas Group	data unavailable	93	89	88	N/A	N/A	N/A
- Jetstar	data unavailable	0	N/A	100	N/A	N/A	N/A
- Virgin Australia	data unavailable	92	84	79	N/A	N/A	N/A
- REX	data unavailable	67	67	57	N/A	N/A	N/A
- Other	data unavailable	71	61	71	N/A	N/A	N/A

Weekly Airport Overview – Week starting 29 May 2023

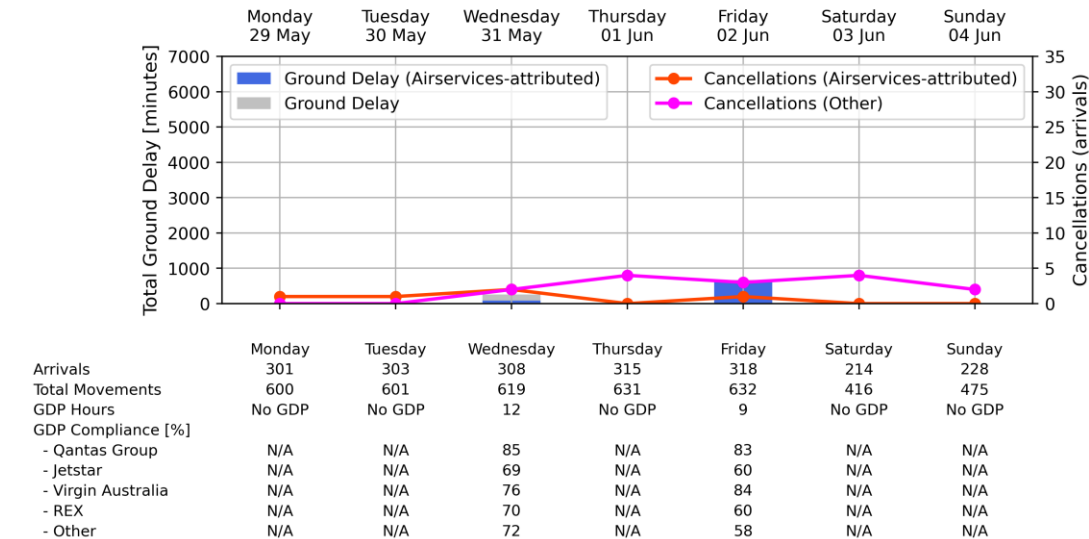
Sydney KSA - Week starting 29 May 2023



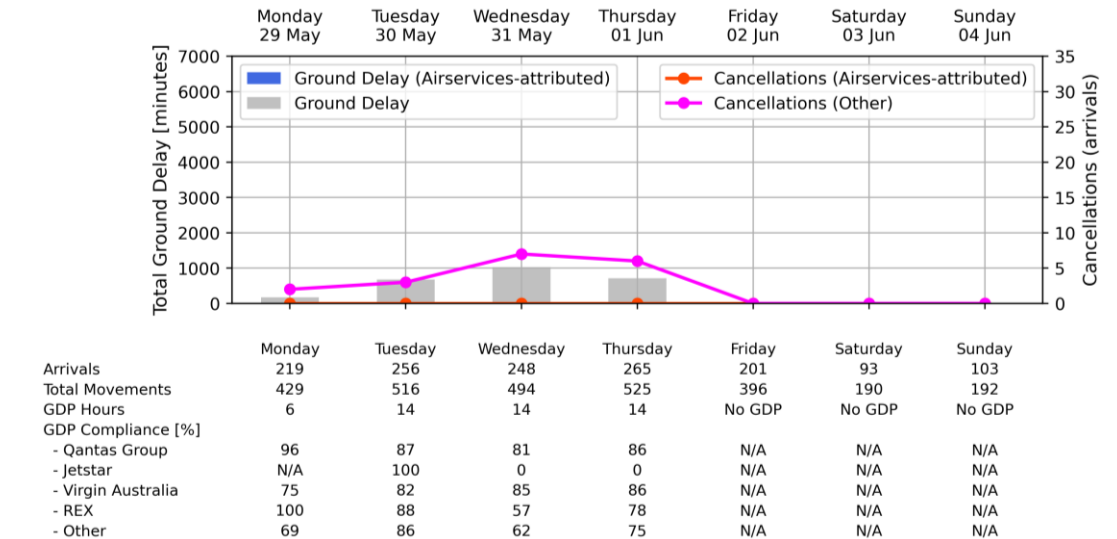
Melbourne Airport - Week starting 29 May 2023



Brisbane Airport - Week starting 29 May 2023

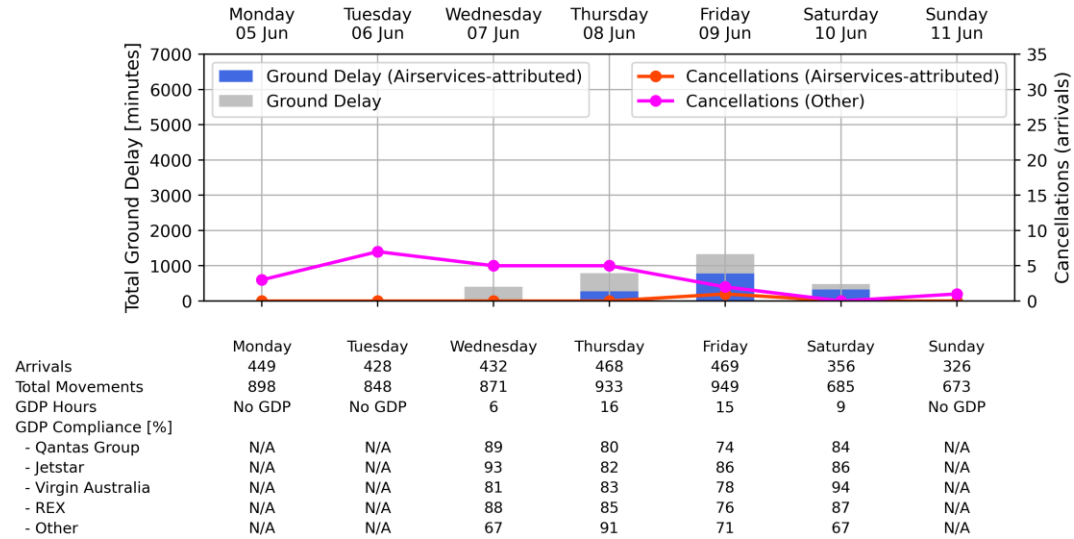


Perth Airport - Week starting 29 May 2023

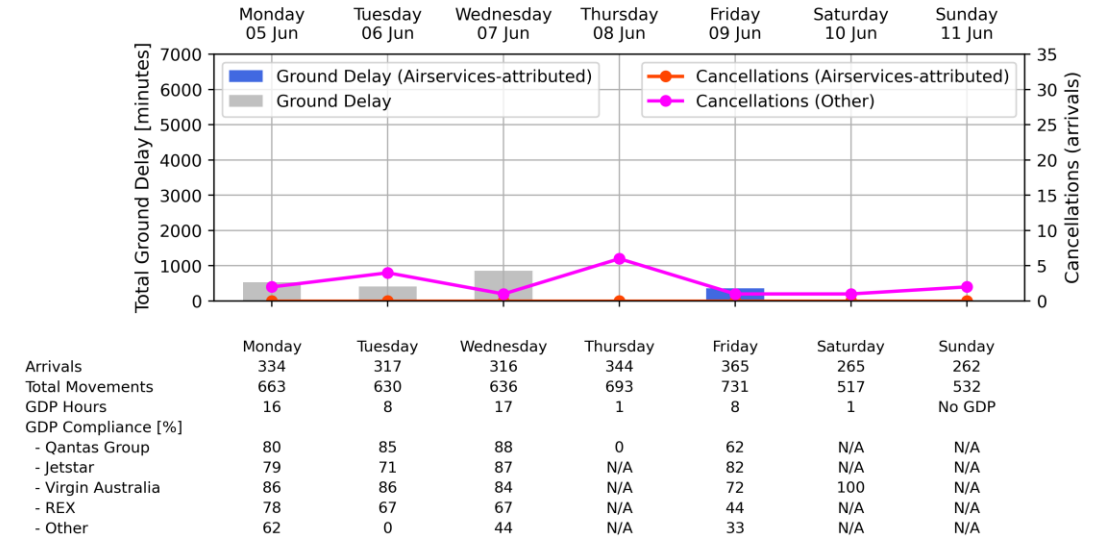


Weekly Airport Overview – Week starting 05 June 2023

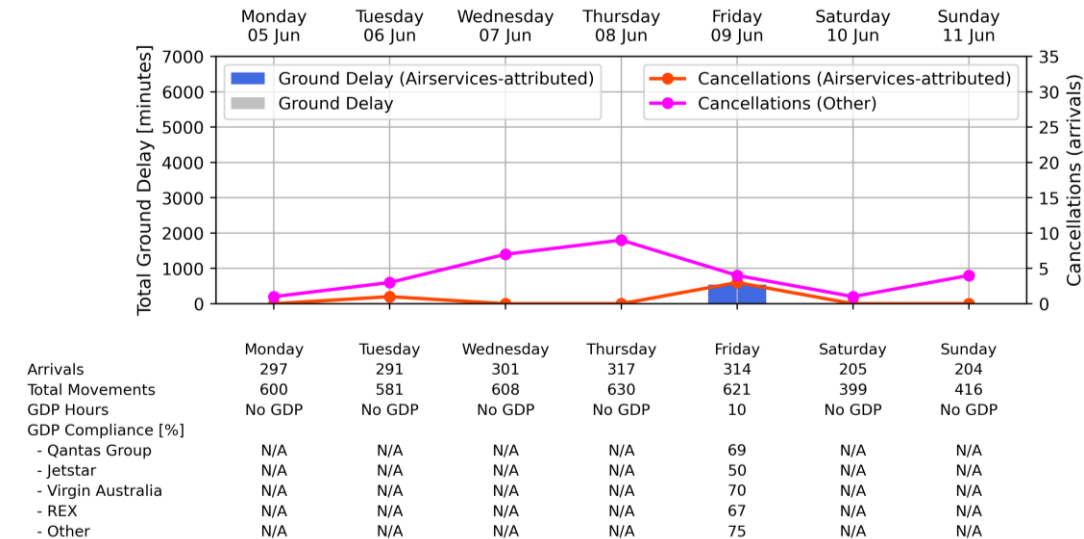
Sydney KSA - Week starting 05 Jun 2023



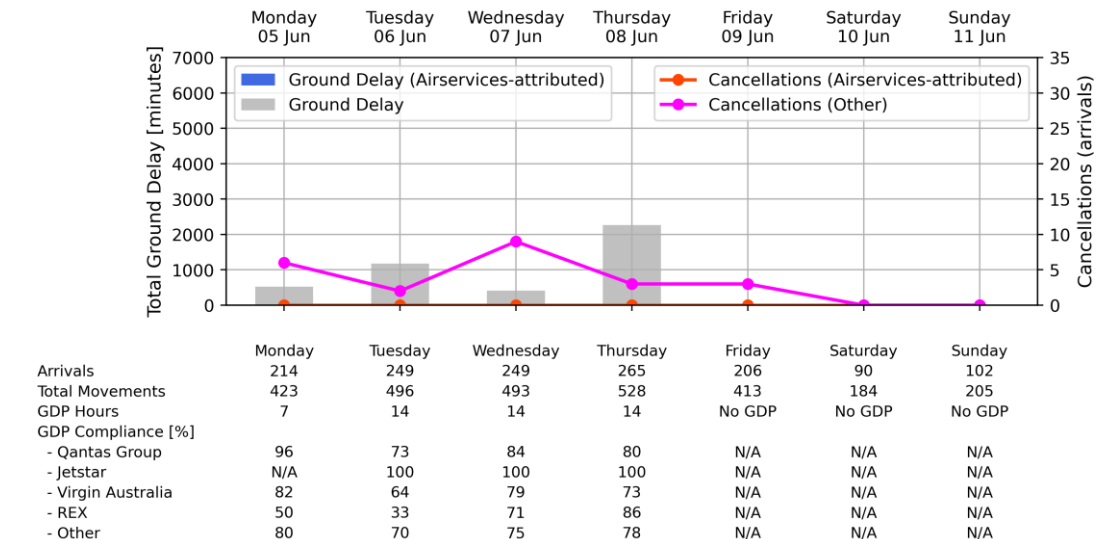
Melbourne Airport - Week starting 05 Jun 2023



Brisbane Airport - Week starting 05 Jun 2023

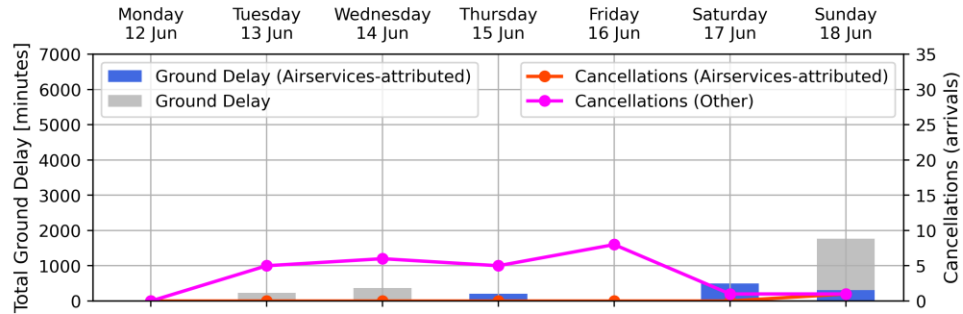


Perth Airport - Week starting 05 Jun 2023



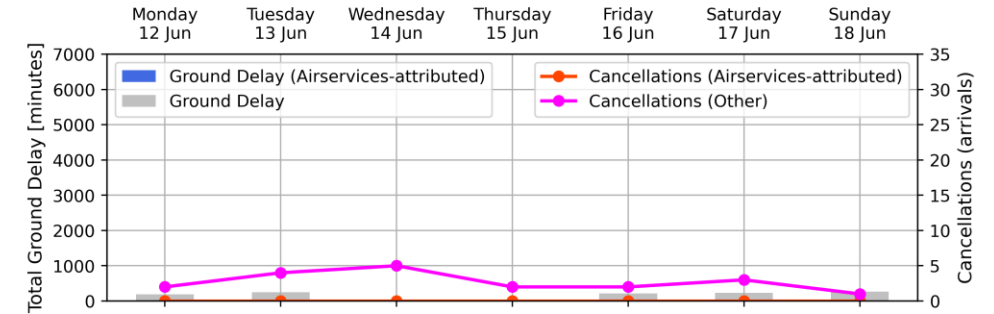
Weekly Airport Overview – Week starting 12 June 2023

Sydney KSA - Week starting 12 Jun 2023



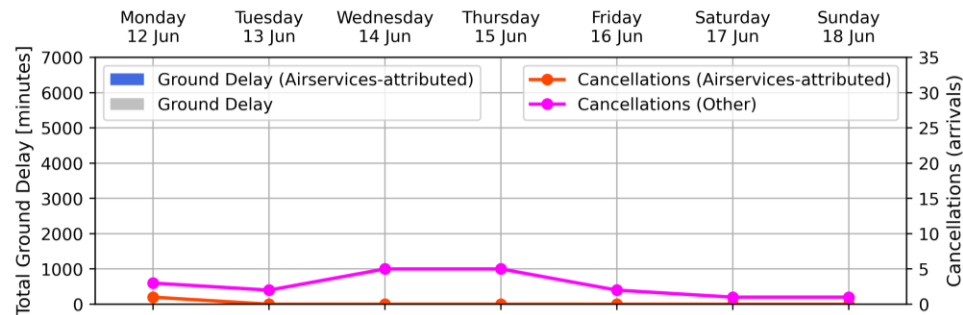
Arrivals	Monday	Tuesday	Wednesday	Thursday	Friday	Saturday	Sunday
Total Movements	421	433	438	457	462	348	372
GDP Hours	No GDP	7	10	5	No GDP	5	8
GDP Compliance [%]							
- Qantas Group	N/A	76	80	79	N/A	87	89
- Jetstar	N/A	100	90	67	N/A	85	77
- Virgin Australia	N/A	67	82	72	N/A	85	75
- REX	N/A	91	85	69	N/A	88	85
- Other	N/A	80	100	75	N/A	100	50

Melbourne Airport - Week starting 12 Jun 2023



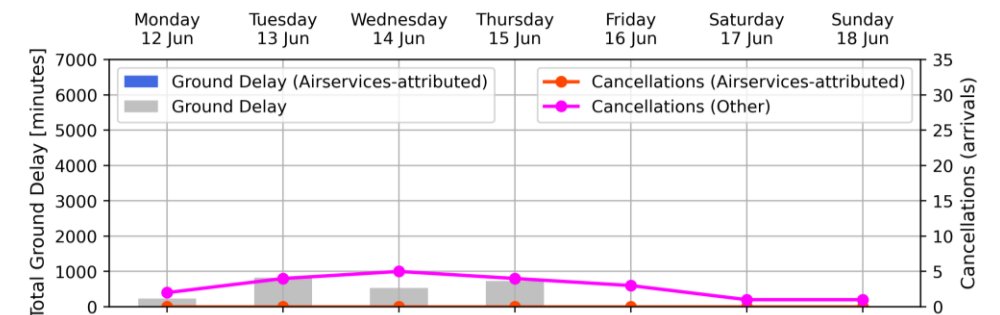
Arrivals	Monday	Tuesday	Wednesday	Thursday	Friday	Saturday	Sunday
Total Movements	322	329	326	341	348	256	291
GDP Hours	6	8	No GDP	No GDP	9	9	8
GDP Compliance [%]							
- Qantas Group	80	83	N/A	N/A	76	89	82
- Jetstar	80	88	N/A	N/A	89	61	74
- Virgin Australia	94	94	N/A	N/A	95	86	82
- REX	100	60	N/A	N/A	86	50	100
- Other	33	100	N/A	N/A	100	100	50

Brisbane Airport - Week starting 12 Jun 2023



Arrivals	Monday	Tuesday	Wednesday	Thursday	Friday	Saturday	Sunday
Total Movements	293	291	299	315	318	196	238
GDP Hours	593	580	601	633	628	394	481
GDP Compliance [%]	No GDP	No GDP	No GDP	No GDP	No GDP	No GDP	No GDP
- Qantas Group	N/A	N/A	N/A	N/A	N/A	N/A	N/A
- Jetstar	N/A	N/A	N/A	N/A	N/A	N/A	N/A
- Virgin Australia	N/A	N/A	N/A	N/A	N/A	N/A	N/A
- REX	N/A	N/A	N/A	N/A	N/A	N/A	N/A
- Other	N/A	N/A	N/A	N/A	N/A	N/A	N/A

Perth Airport - Week starting 12 Jun 2023



Arrivals	Monday	Tuesday	Wednesday	Thursday	Friday	Saturday	Sunday
Total Movements	219	262	238	269	212	93	105
GDP Hours	430	520	484	527	418	190	202
GDP Compliance [%]	6	14	14	14	No GDP	No GDP	No GDP
- Qantas Group	84	82	83	95	N/A	N/A	N/A
- Jetstar	N/A	100	100	100	N/A	N/A	N/A
- Virgin Australia	75	79	74	67	N/A	N/A	N/A
- REX	67	86	86	71	N/A	N/A	N/A
- Other	89	67	86	84	N/A	N/A	N/A

Air Traffic Flow Management and Performance dashboard legend

Total Ground Delay. Flight delays experienced when waiting (on the ground) for a GDP-assigned departure slot as result of predicted congestion at the arrival airport. Airlines may optimise GDP slots to minimise delays. Not included is ground delay for GA and Military.

Arrivals. Total arrivals at this airport during the day of the report

Total Movements. Total movements at this airport during the day of the report. Movements include arrival and departing aircraft.

GDP Hours. Total hours where the number of scheduled flights exceeded the predicted available capacity at this airport. This triggers a GDP to be put in place to ensure an orderly flow of flights into this airport. A GDP typically starts one hour ahead of a congested period and concludes one or two hours after.

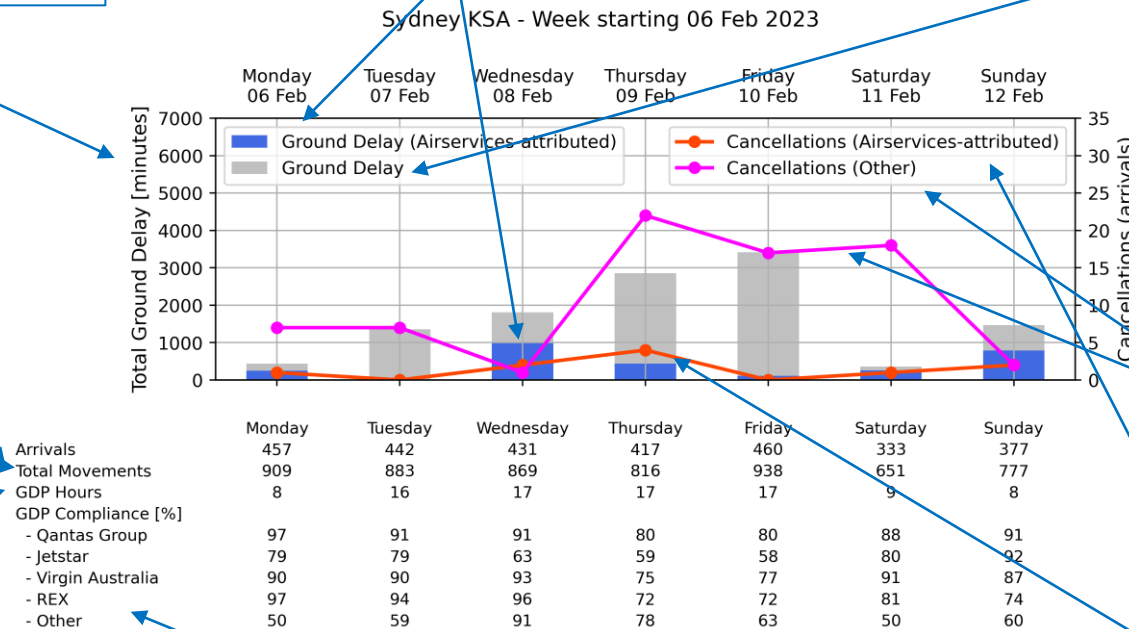
Ground Delay (Airservices-attributed). Proportion of ground delay due to Airservices reduced service delivery. This includes Airservices staffing impact and technical issues of Airservices operational equipment.

Ground Delay. Total ground delay experienced by flights departing to this airport. Total ground delay includes factors outside of Airservices control, which include inclement weather and reduced airport usability.

Cancellations (arrivals). Number of flights scheduled to arrive at this airport determined to have been cancelled within 24 hours of departure.

Cancellations (Other). Number of scheduled flight cancellations outside of Airservices control, which include inclement weather, aircraft technical issues, and other airline decisions.

Cancellations (Airservices-attributed). Number of scheduled flight cancellations attributable to Airservices reduced service delivery.



GDP Compliance. Proportion of flights into this airport that departed compliant with their assigned GDP slot. Ensuring a flight depart compliant with its assigned GDP slot is the responsibility of the airline operating the flight.

GDP – Ground Delay Program
KSA – Kingsford Smith Airport