




Indicative Compliance

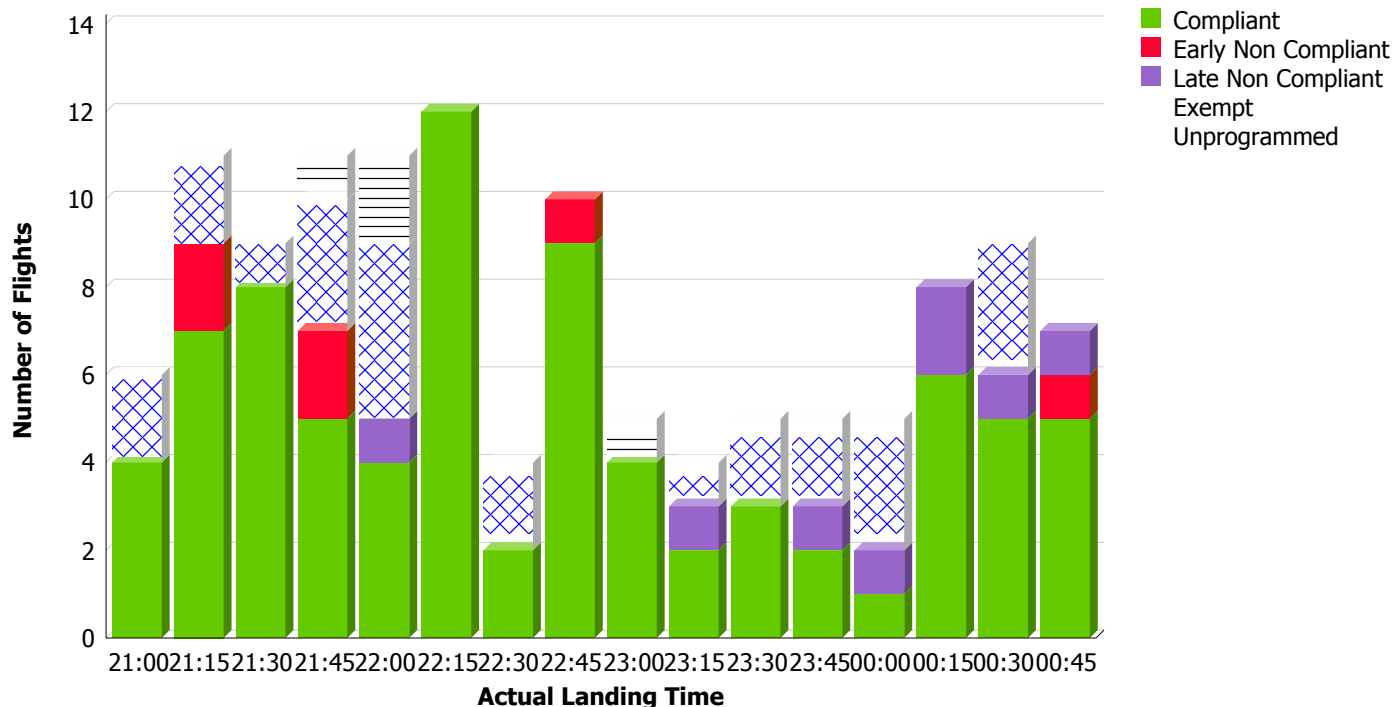
 **Airport:** YSSY-SYDNEY
 **Time Period (UTC):** 30/05/2012 21:00 - 31/05/2012 00:59
 **Compliance Values:** -5 mins - +15 mins

Flights with available Compliance information

Of Compliant Flights: 79
Of Non Compliant Flights: 14
Of Flights Exempt: 25
Of Unprogrammed: 4

Flights with available Runway information

Actual Runway	# Of Flights Landed
16L	49
16R	73



Report Notes:

1. Compliance in accordance with the ATFM Business Rules will be measured against AOBT & COBT and will be reported on once data is received.
2. The report contains CTOT based calculations only for arrived flights with values for the selected airport..
3. A flights is Early Non Compliant if departed before its CTOT minus the compliance variable listed above (e.g. CTOT -5 mins).
4. A flights is Late Non Compliant if departed after its CTOT plus the compliance variable listed above (e.g. CTOT +15 mins).
5. Airborne Delay = Actual Landing Time - Estimated Time of Arrival (latest value 40 minutes before arrival)
6. Airborne Delay is a non negative value or NULL if values are missing.
7. ETA is provided by EUROCAT.
8. Unprogrammed = flights with an original ETA outside of the GDP period and landed within the GDP period.
9. The report calculations may be adjusted based on industry feedback.