

# Indicative Compliance



▼ Airport: YBBN-Brisbane 
 ▼ Time Period (UTC): 29/05/2016 20:00 - 30/05/2016 00:59 
 ▼ Compliance Values: -5 mins - +15 mins

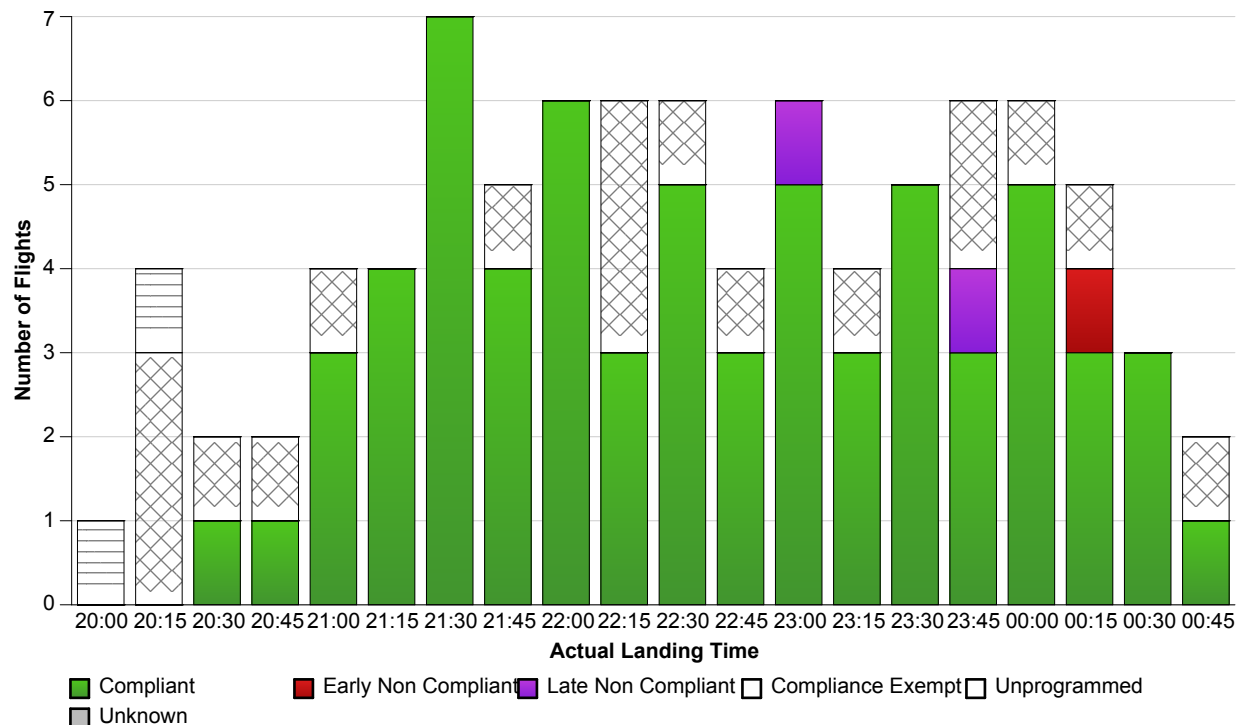
### Compliance information

**Compliance:** 95.59%  
**# Of Compliant Flights:** 65  
**# Of Non Compliant Flights:** 3  
**# Of Compliance Exempt Flights:** 18  
**# Of Unprogrammed Flights:** 2  
**# Of Flights With Unknown Status:** 0

### Runway information

Actual Runway	# Of Flights Landed
14	2
19	85
32	1

*Note: 0 occurrence(s) where last ETA was used instead of ALDT.*



### Report Notes:

**Compliance:** Compliance is measured based on gate times (COBT and AOBT). Ground Delay Exempt flights are still subject to compliance with allocated COBT.  
*Please note that compliance with COBT is not part of this report. For flights identified as non-compliant, please advise the NOC if you consider the flight complied with COBT for further investigation.*

**Indicative Compliance:** Indicative Compliance is measured based on runway times (CTOT and ATOT).

**Compliant:** A flight is Compliant if departed between its CTOT plus & minus the compliance variables (e.g. CTOT -5 mins & CTOT +15 mins).

**Early Non Compliant:** A flight is Early Non Compliant if departed before its CTOT minus the compliance variable (e.g. CTOT -5 mins).

**Late Non Compliant:** A flight is Late Non Compliant if departed after its CTOT plus the compliance variable (e.g. CTOT +15 mins).

**Compliance Exempt:** International and Medical flights are Compliance Exempt flights.

**Unprogrammed:** A flight is Unprogrammed if it has an original ETA outside of the GDP period and landed within the GDP period.

**Unknown Status:** A flight has Unknown Status if the Compliance status cannot be established for the flight. This may be due to missing data in Harmony For ANSPs.