

Indicative Compliance



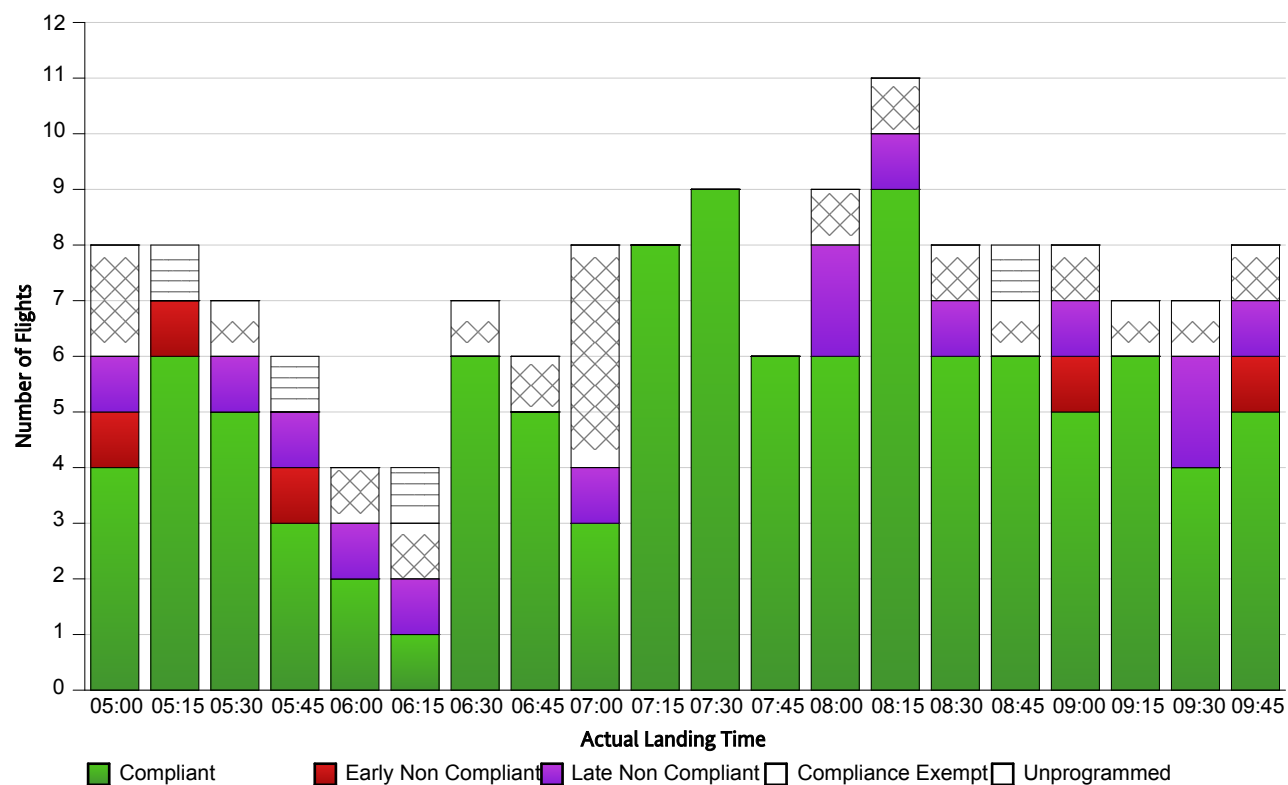
✈ Airport: YSSY-Sydney **🕒 Time Period (UTC):** 28/05/2013 05:00 - 28/05/2013 09:59 **📏 Compliance Values:** -5 mins - +15 mins

Flights with available Compliance information

Compliance: 84.68%
Of Compliant Flights: 105
Of Non Compliant Flights: 19
Of Compliance Exempt Flights: 19
Of Unprogrammed: 4

Flights with available Runway information

Actual Runway	# Of Flights Landed
34L	106
34R	41



Report Notes:

Compliance: Compliance is measured based on gate times (COBT and AOBT). Ground Delay Exempt flights are still subject to compliance with allocated COBT.

Please note that Compliance with COBT is not part of this report!

Indicative Compliance: Indicative Compliance is measured based on runway times (CTOT and ATOT).

Compliant: A flight is Compliant if departed between its CTOT plus & minus the compliance variables (e.g. CTOT -5 mins & CTOT +15 mins).

Early Non Compliant: A flight is Early Non Compliant if departed before its CTOT minus the compliance variable (e.g. CTOT -5 mins).

Late Non Compliant: A flight is Late Non Compliant if departed after its CTOT plus the compliance variable (e.g. CTOT +15 mins).

Compliance Exempt: International and Medical flights are Compliance Exempt flights.

Unprogrammed: A flight is Unprogrammed if it has an original ETA outside of the GDP period and landed within the GDP period.