

Indicative Compliance



📍 Airport: YSSY-Sydney
 🕒 Time Period (UTC): 26/05/2015 05:00 - 26/05/2015 09:59
 📊 Compliance Values: -5 mins - +15 mins

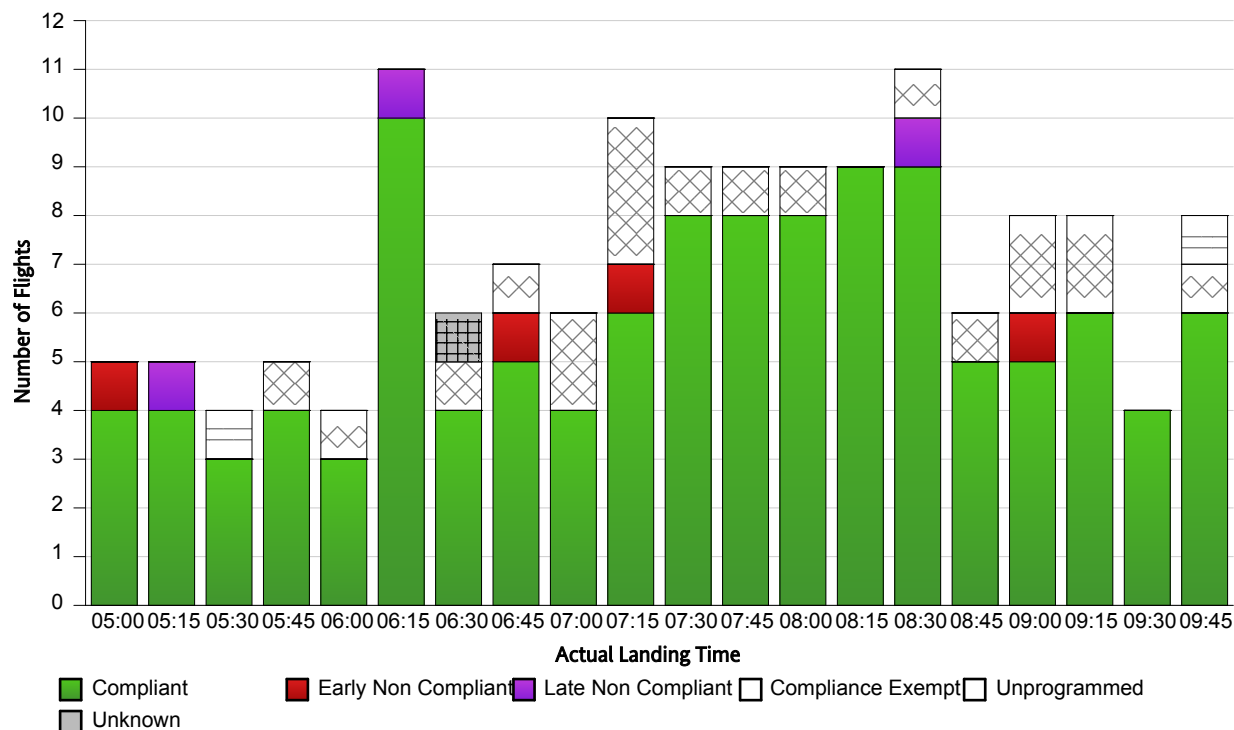
Compliance information

Compliance: 94.26%
Of Compliant Flights: 115
Of Non Compliant Flights: 7
Of Compliance Exempt Flights: 19
Of Unprogrammed Flights: 2
Of Flights With Unknown Status: 1

Runway information

Actual Runway	# Of Flights Landed
16L	54
16R	71
25	19

Note: 0 occurrence(s) where last ETA was used instead of ALDT.



Report Notes:

Compliance: Compliance is measured based on gate times (COBT and AOBT). Ground Delay Exempt flights are still subject to compliance with allocated COBT.
Please note that compliance with COBT is not part of this report. For flights identified as non-compliant, please advise the NOC if you consider the flight complied with COBT for further investigation.

Indicative Compliance: Indicative Compliance is measured based on runway times (CTOT and ATOT).

Compliant: A flight is Compliant if departed between its CTOT plus & minus the compliance variables (e.g. CTOT -5 mins & CTOT +15 mins).

Early Non Compliant: A flight is Early Non Compliant if departed before its CTOT minus the compliance variable (e.g. CTOT -5 mins).

Late Non Compliant: A flight is Late Non Compliant if departed after its CTOT plus the compliance variable (e.g. CTOT +15 mins).

Compliance Exempt: International and Medical flights are Compliance Exempt flights.

Unprogrammed: A flight is Unprogrammed if it has an original ETA outside of the GDP period and landed within the GDP period.

Unknown Status: A flight has Unknown Status if the Compliance status cannot be established for the flight. This may be due to missing data in Harmony For ANSPs.