

Indicative Compliance (CTOT +/- 5 mins) vs Airborne Delay

Airport: YBBN-BRISBANE
Time Period (UTC): 25/03/2012 20:00 - 26/03/2012 00:59

Flights with available Airborne Delay information

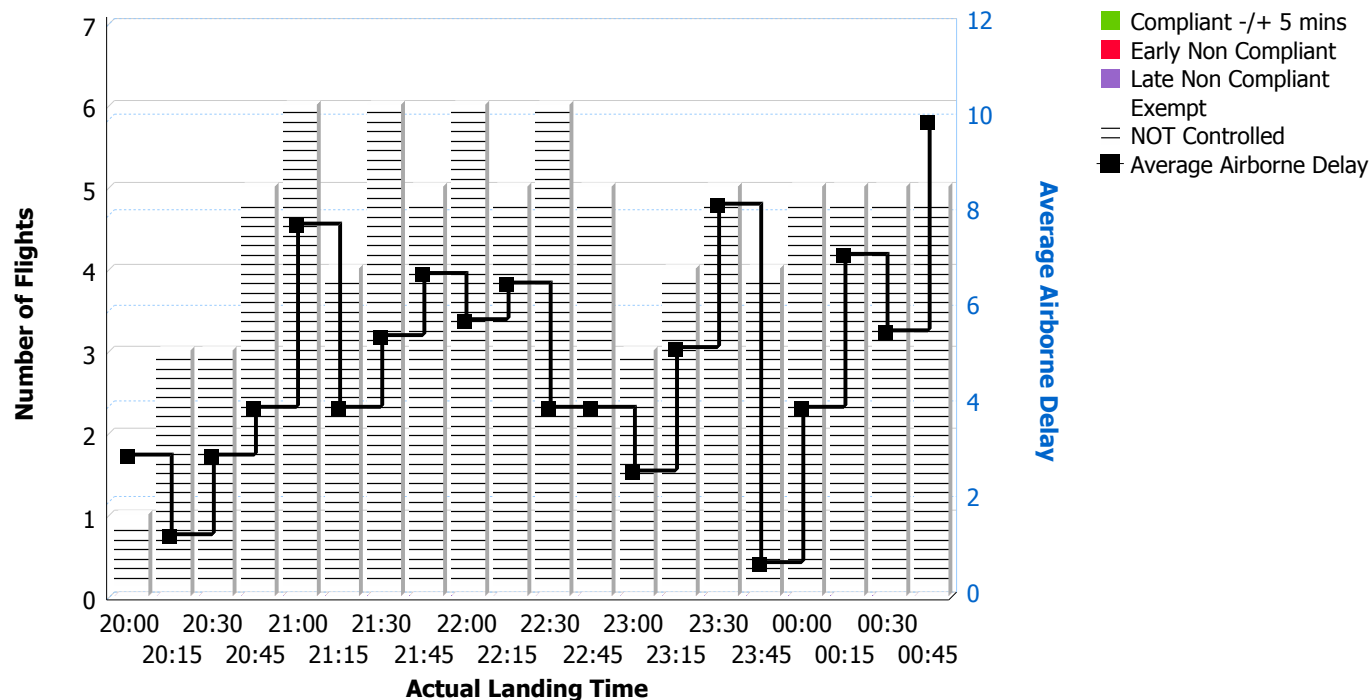
Total Airborne Delay: 473 mins
Average Airborne Delay: 5.31 mins
Maximum Airborne Delay: 31 mins
Of Flights With Delay Values: 89

Flights with available Compliance information

Of Compliant Flights: 0
Of Non Compliant Flights: 0
Of Flights Exempt: 0
Of NOT controlled: 91

Flights with available Runway information

Actual Runway	# Of Flights Landed
14	4
19	87



Report Notes:

1. Compliance in accordance with the ATFM Business Rules will be measured against AOBT & COBT and will be reported on once data is received.
2. The report contains CTOT based calculations only for arrived flights with values for the selected airport..
3. A flights is Early Non Compliant if departed more than 5 minutes before its CTOT.
4. A flights is Late Non Compliant if departed more than 5 minutes after its CTOT.
5. Airborne Delay = Actual Landing Time - Estimated Time of Arrival (latest value 40 minutes before arrival)
6. Airborne Delay is a non negative value or NULL if values are missing.
7. ETA is provided by EUROCAT.
8. The report calculations may be adjusted based on industry feedback.