

# Indicative Compliance



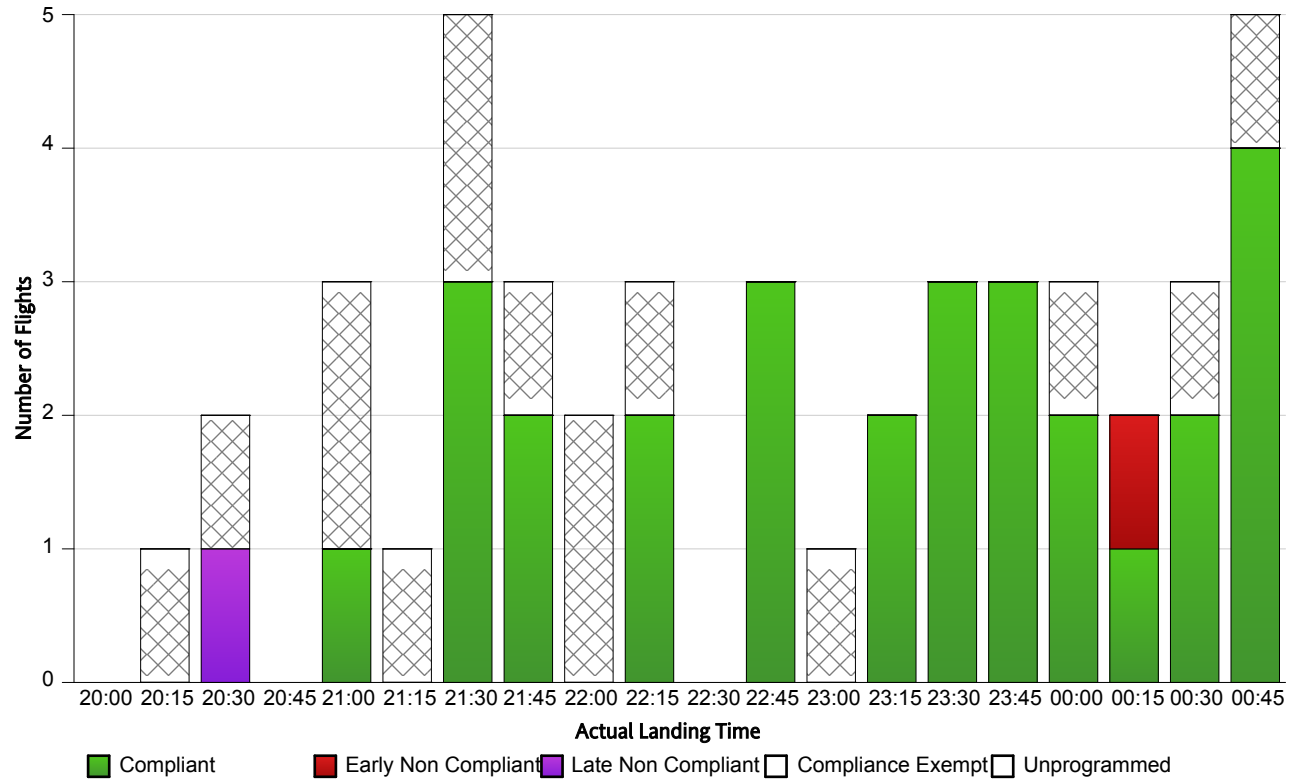
▼ **Airport:** YBBN-Brisbane 
 ▼ **Time Period (UTC):** 18/05/2013 20:00 - 19/05/2013 00:59 
 ▼ **Compliance Values:** -5 mins - +15 mins

**Flights with available Compliance information**

**Compliance:** 93.33%  
**# Of Compliant Flights:** 28  
**# Of Non Compliant Flights:** 2  
**# Of Compliance Exempt Flights:** 15  
**# Of Unprogrammed:** 0

**Flights with available Runway information**

Actual Runway	# Of Flights Landed
19	45



**Report Notes:**

**Compliance:** Compliance is measured based on gate times (COBT and AOBT). Ground Delay Exempt flights are still subject to compliance with allocated COBT.

*Please note that Compliance with COBT is not part of this report!*

**Indicative Compliance:** Indicative Compliance is measured based on runway times (CTOT and ATOT).

**Compliant:** A flight is Compliant if departed between its CTOT plus & minus the compliance variables (e.g. CTOT -5 mins & CTOT +15 mins).

**Early Non Compliant:** A flight is Early Non Compliant if departed before its CTOT minus the compliance variable (e.g. CTOT -5 mins).

**Late Non Compliant:** A flight is Late Non Compliant if departed after its CTOT plus the compliance variable (e.g. CTOT +15 mins).

**Compliance Exempt:** International and Medical flights are Compliance Exempt flights.

**Unprogrammed:** A flight is Unprogrammed if it has an original ETA outside of the GDP period and landed within the GDP period.