

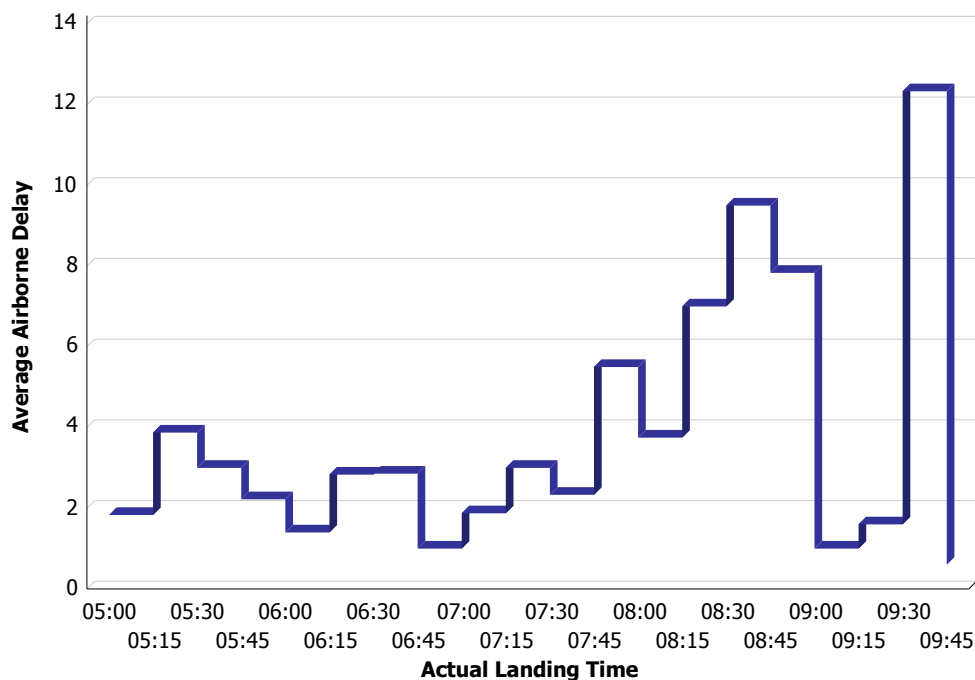


Airborne Delay Summary

 **Airport:** YBBN-BRISBANE
 **Time Period (UTC):** 18/05/2012 05:00 - 18/05/2012 09:59



Total Airborne Delay: 349 minutes
Average Airborne Delay: 3.78 minutes
Maximum Airborne Delay: 23 minutes
Total Number Of Flights: 95
Of Flights With Values: 95

Actual Runway	# Of Flights Landed
01	32
14	19
19	44

Report Notes:

1. The report contains arrived flights with values for the selected airport.
2. Airborne Delay = Actual Landing Time - Estimated Time of Arrival (latest value 40 minutes before arrival)
3. Airborne Delay is a non negative value or NULL if values are missing.
4. ETA is provided by EUROCAT.
5. The EUROCAT data feed may be replaced by MAESTRO data feed in the future.
6. The report calculations may be adjusted based on industry feedback.