

# Indicative Compliance



**Airport:** YBBN-Brisbane **Time Period (UTC):** 16/05/2017 20:00 - 17/05/2017 0:59 **Compliance Values:** -5 mins - +15 mins

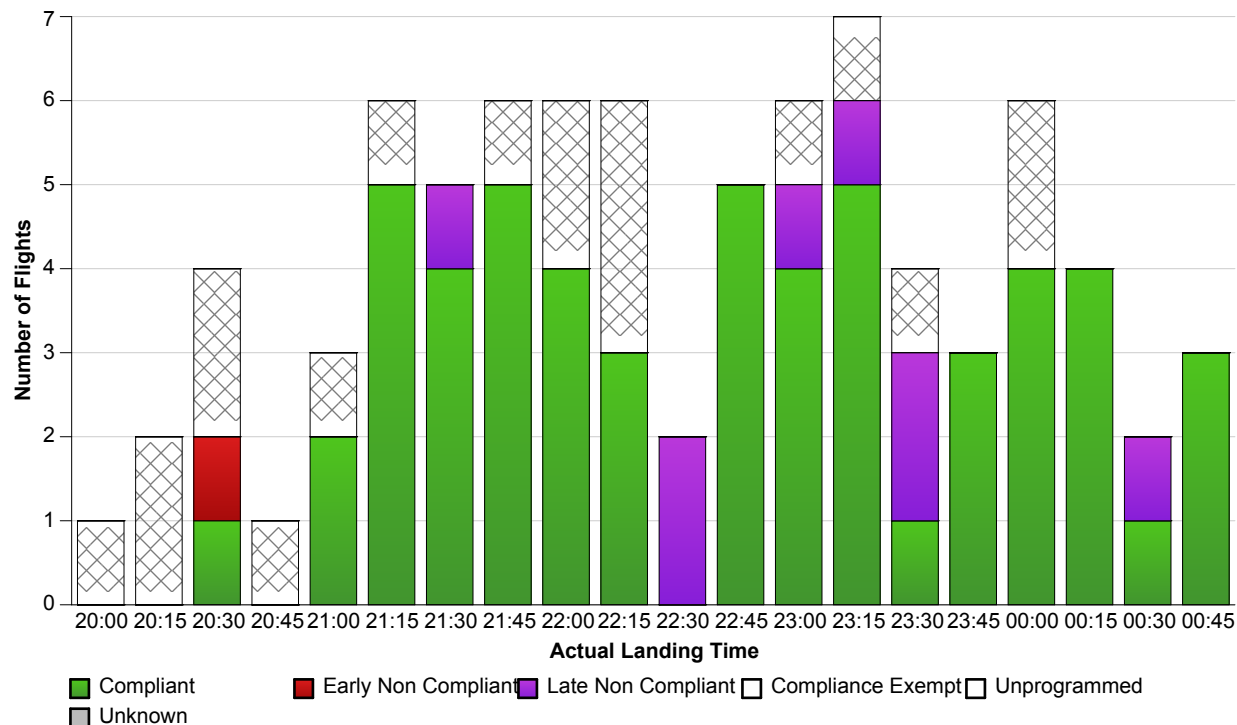
### Compliance information

**Compliance:** 85.71%  
**# Of Compliant Flights:** 54  
**# Of Non Compliant Flights:** 9  
**# Of Compliance Exempt Flights:** 19  
**# Of Unprogrammed Flights:** 0  
**# Of Flights With Unknown Status:** 0

### Runway information

Actual Runway	# Of Flights Landed
19	82

*Note: 0 occurrence(s) where last ETA was used instead of ALDT.*



### Report Notes:

**Compliance:** Compliance is measured based on gate times (COBT and AOBT). Ground Delay Exempt flights are still subject to compliance with allocated COBT. *Please note that compliance with COBT is not part of this report. For flights identified as non-compliant, please advise the NCC if you consider the flight complied with COBT for further investigation.*

**Indicative Compliance:** Indicative Compliance is measured based on runway times (CTOT and ATOT).

**Compliant:** A flight is Compliant if departed between its CTOT plus & minus the compliance variables (e.g. CTOT -5 mins & CTOT +15 mins).

**Early Non Compliant:** A flight is Early Non Compliant if departed before its CTOT minus the compliance variable (e.g. CTOT -5 mins).

**Late Non Compliant:** A flight is Late Non Compliant if departed after its CTOT plus the compliance variable (e.g. CTOT +15 mins).

**Compliance Exempt:** International and Medical flights are Compliance Exempt flights.

**Unprogrammed:** A flight is Unprogrammed if it has an original ETA outside of the GDP period and landed within the GDP period.

**Unknown Status:** A flight has Unknown Status if the Compliance status cannot be established for the flight. This may be due to missing data in Harmony For ANSPs.