




## Indicative Compliance

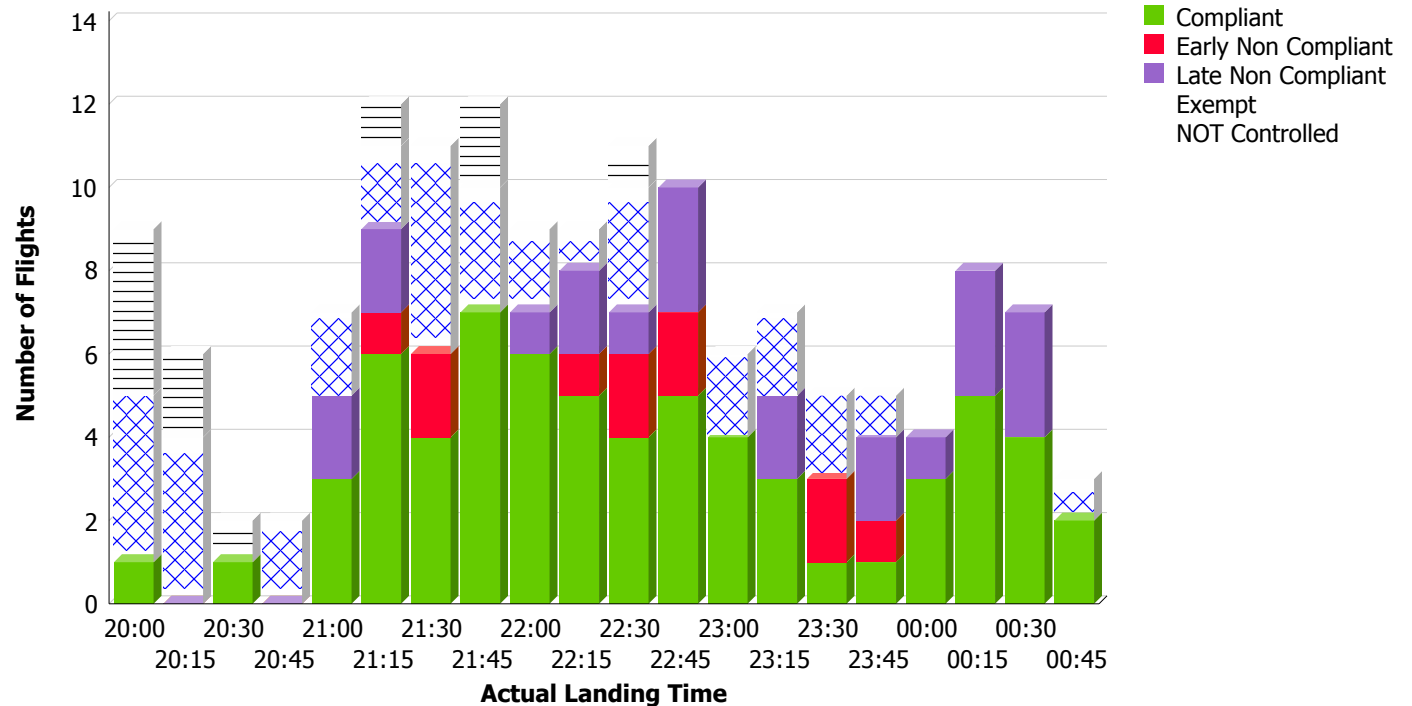
 **Airport:** YSSY-SYDNEY  
 **Time Period (UTC):** 15/05/2012 20:00 - 16/05/2012 00:59  
 **Compliance Values:** -5 mins - +5 mins

**Flights with available Compliance information**

**# Of Compliant Flights:** 65  
**# Of Non Compliant Flights:** 33  
**# Of Flights Exempt:** 36  
**# Of NOT controlled:** 11

**Flights with available Runway information**

Actual Runway	# Of Flights Landed
16L	54
16R	75
34L	12
34R	5



**Report Notes:**

1. Compliance in accordance with the ATFM Business Rules will be measured against AOBT & COBT and will be reported on once data is received.
2. The report contains CTOT based calculations only for arrived flights with values for the selected airport..
3. A flights is Early Non Compliant if departed before its CTOT minus the compliance variable listed above (e.g. CTOT -5 mins).
4. A flights is Late Non Compliant if departed after its CTOT plus the compliance variable listed above (e.g. CTOT +5 mins).
5. Airborne Delay = Actual Landing Time - Estimated Time of Arrival (latest value 40 minutes before arrival)
6. Airborne Delay is a non negative value or NULL if values are missing.
7. ETA is provided by EUROCAT.
8. The report calculations may be adjusted based on industry feedback.