

Indicative Compliance

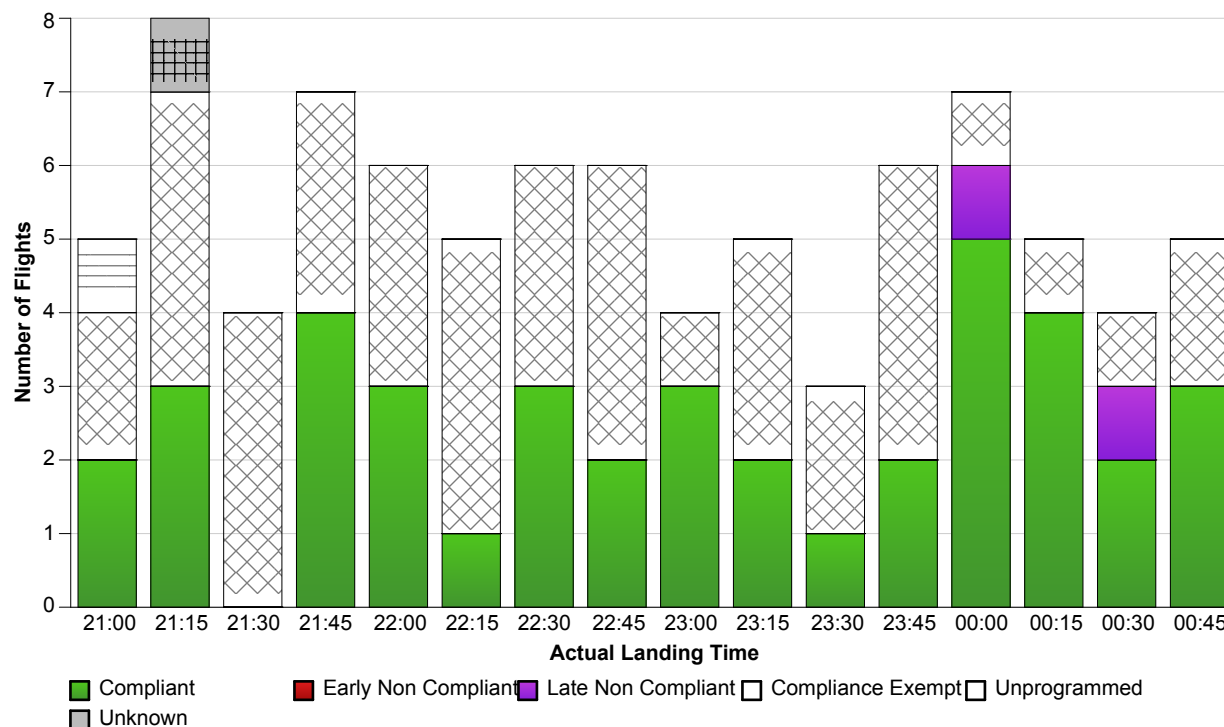


▼ Airport: YSSY-Sydney
 ▼ Time Period (UTC): 14/05/2016 21:00 - 15/05/2016 00:59
 ▼ Compliance Values: -5 mins - +15 mins

Compliance information
 Compliance: 95.65%
 # Of Compliant Flights: 44
 # Of Non Compliant Flights: 2
 # Of Compliance Exempt Flights: 45
 # Of Unprogrammed Flights: 1
 # Of Flights With Unknown Status: 1

Runway information
 Actual Runway # Of Flights Landed
 34L 61
 34R 31
 No Rwy Info 1

Note: 1 occurrence(s) where last ETA was used instead of ALDT.



Report Notes:

Compliance: Compliance is measured based on gate times (COBT and AOBT). Ground Delay Exempt flights are still subject to compliance with allocated COBT. *Please note that compliance with COBT is not part of this report. For flights identified as non-compliant, please advise the NOC if you consider the flight complied with COBT for further investigation.*

Indicative Compliance: Indicative Compliance is measured based on runway times (CTOT and ATOT).

Compliant: A flight is Compliant if departed between its CTOT plus & minus the compliance variables (e.g. CTOT -5 mins & CTOT +15 mins).

Early Non Compliant: A flight is Early Non Compliant if departed before its CTOT minus the compliance variable (e.g. CTOT -5 mins).

Late Non Compliant: A flight is Late Non Compliant if departed after its CTOT plus the compliance variable (e.g. CTOT +15 mins).

Compliance Exempt: International and Medical flights are Compliance Exempt flights.

Unprogrammed: A flight is Unprogrammed if it has an original ETA outside of the GDP period and landed within the GDP period.

Unknown Status: A flight has Unknown Status if the Compliance status cannot be established for the flight. This may be due to missing data in Harmony For ANSPs.