

# Indicative Compliance



📍 Airport: YSSY-Sydney 
 🕒 Time Period (UTC): 10/05/2016 20:00 - 11/05/2016 00:59 
 📊 Compliance Values: -5 mins - +15 mins

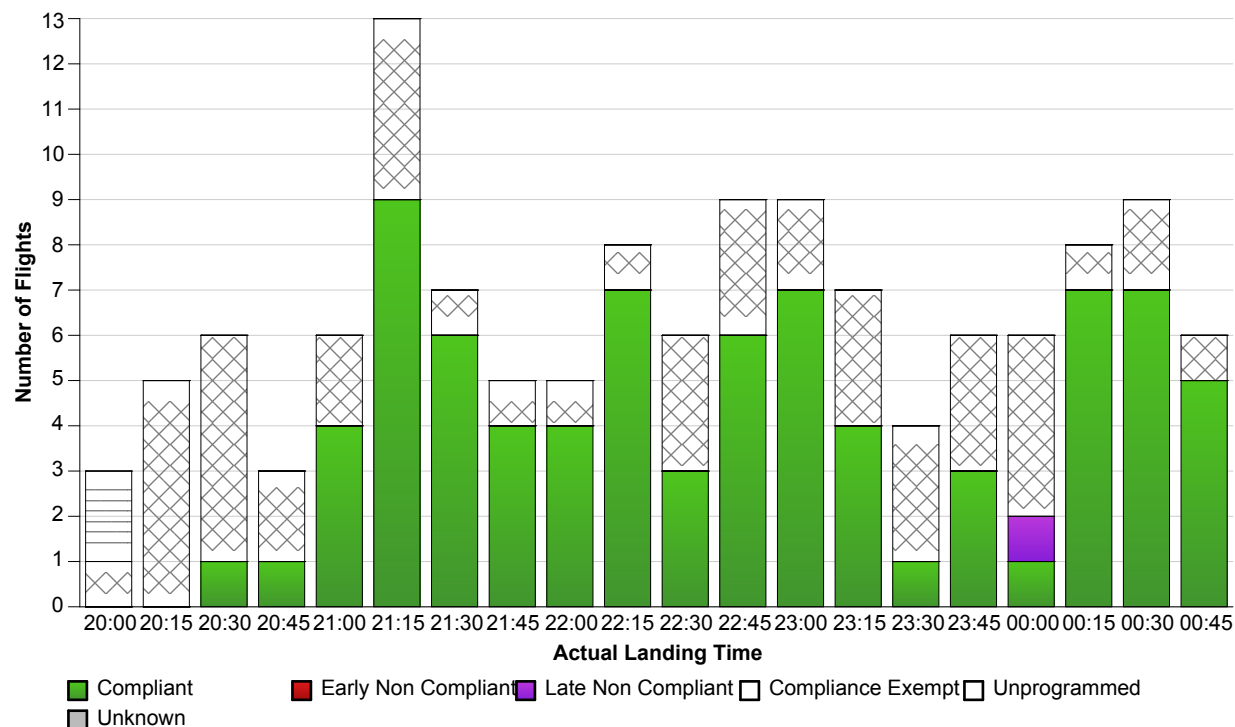
### Compliance information

**Compliance:** 99.01%  
**# Of Compliant Flights:** 100  
**# Of Non Compliant Flights:** 1  
**# Of Compliance Exempt Flights:** 59  
**# Of Unprogrammed Flights:** 3  
**# Of Flights With Unknown Status:** 0

### Runway information

Actual Runway	# Of Flights Landed
34L	94
34R	69

Note: 0 occurrence(s) where last ETA was used instead of ALDT.



### Report Notes:

**Compliance:** Compliance is measured based on gate times (COBT and AOBT). Ground Delay Exempt flights are still subject to compliance with allocated COBT. *Please note that compliance with COBT is not part of this report. For flights identified as non-compliant, please advise the NOC if you consider the flight complied with COBT for further investigation.*

**Indicative Compliance:** Indicative Compliance is measured based on runway times (CTOT and ATOT).

**Compliant:** A flight is Compliant if departed between its CTOT plus & minus the compliance variables (e.g. CTOT -5 mins & CTOT +15 mins).

**Early Non Compliant:** A flight is Early Non Compliant if departed before its CTOT minus the compliance variable (e.g. CTOT -5 mins).

**Late Non Compliant:** A flight is Late Non Compliant if departed after its CTOT plus the compliance variable (e.g. CTOT +15 mins).

**Compliance Exempt:** International and Medical flights are Compliance Exempt flights.

**Unprogrammed:** A flight is Unprogrammed if it has an original ETA outside of the GDP period and landed within the GDP period.

**Unknown Status:** A flight has Unknown Status if the Compliance status cannot be established for the flight. This may be due to missing data in Harmony For ANSPs.