




Indicative Compliance

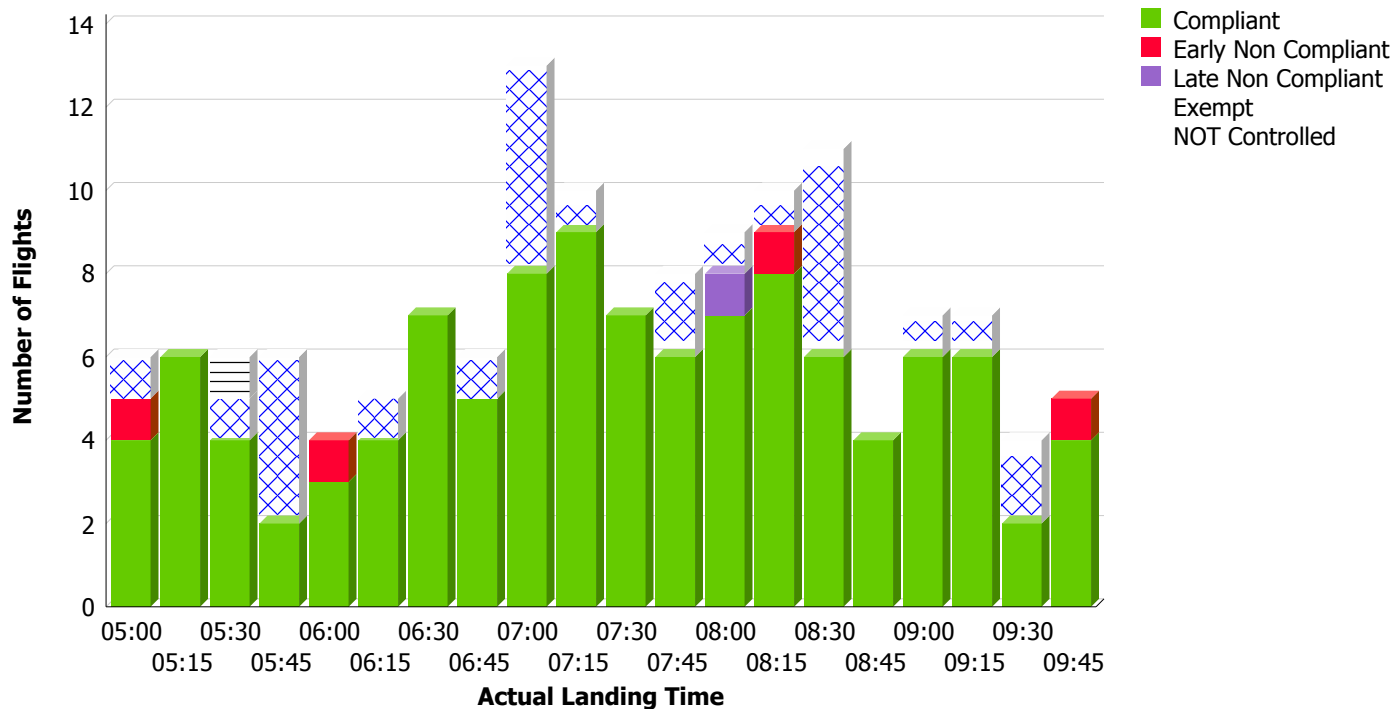
 **Airport:** YSSY-SYDNEY
 **Time Period (UTC):** 09/05/2012 05:00 - 09/05/2012 09:59
 **Compliance Values:** -10 mins - +30 mins

Flights with available Compliance information

Of Compliant Flights: 108
Of Non Compliant Flights: 5
Of Flights Exempt: 27
Of NOT controlled: 1

Flights with available Runway information

Actual Runway	# Of Flights Landed
34L	103
34R	41



Report Notes:

1. Compliance in accordance with the ATFM Business Rules will be measured against AOBT & COBT and will be reported on once data is received.
2. The report contains CTOT based calculations only for arrived flights with values for the selected airport..
3. A flights is Early Non Compliant if departed before its CTOT minus the compliance variable listed above (e.g. CTOT -5 mins).
4. A flights is Late Non Compliant if departed after its CTOT plus the compliance variable listed above (e.g. CTOT +5 mins).
5. Airborne Delay = Actual Landing Time - Estimated Time of Arrival (latest value 40 minutes before arrival)
6. Airborne Delay is a non negative value or NULL if values are missing.
7. ETA is provided by EUROCAT.
8. The report calculations may be adjusted based on industry feedback.