




Indicative Compliance

 **Airport:** YSSY-SYDNEY
 **Time Period (UTC):** 07/05/2012 20:00 - 08/05/2012 00:59
 **Compliance Values:** -5 mins - +5 mins

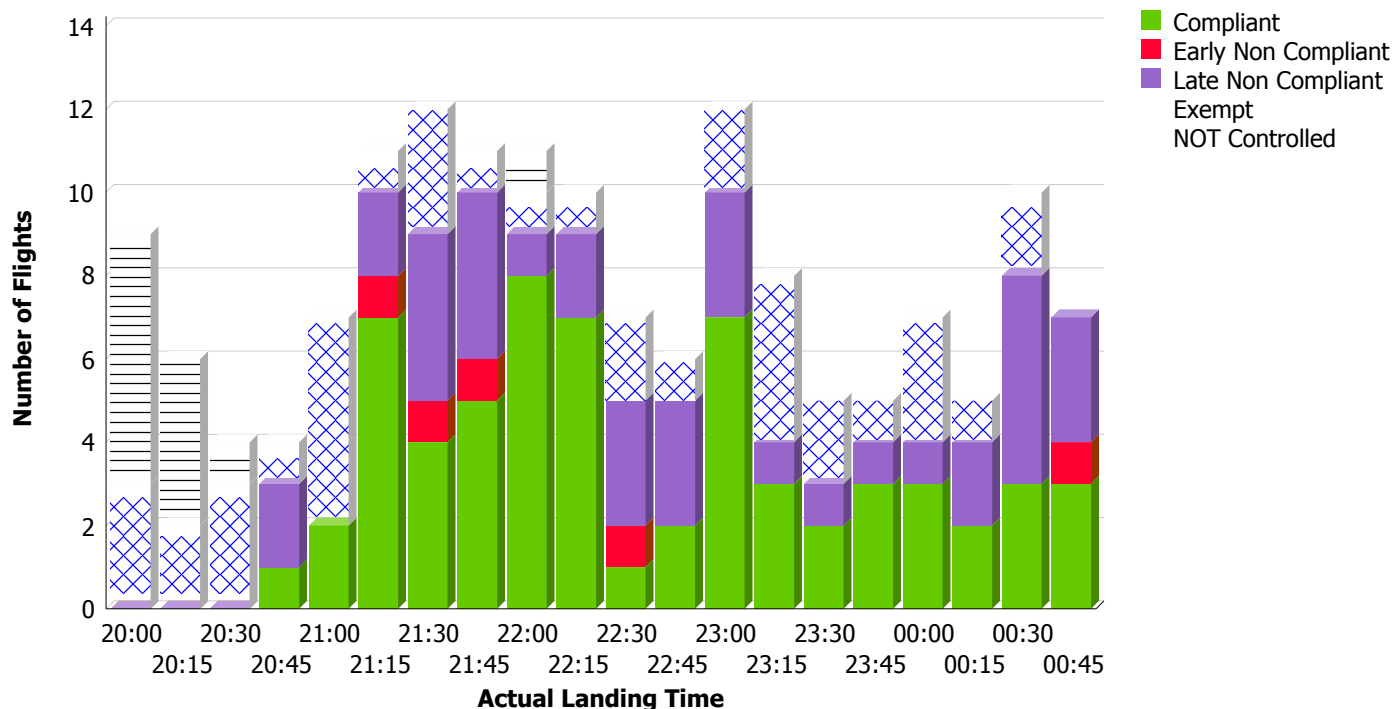
Flights with available Compliance information

Of Compliant Flights: 63
Of Non Compliant Flights: 43
Of Flights Exempt: 39
Of NOT controlled: 12

Flights with available Runway information

Actual Runway # Of Flights Landed

34L	100
34R	57
No Rwy Info	1



Report Notes:

1. Compliance in accordance with the ATFM Business Rules will be measured against AOBT & COBT and will be reported on once data is received.
2. The report contains CTOT based calculations only for arrived flights with values for the selected airport..
3. A flights is Early Non Compliant if departed before its CTOT minus the compliance variable listed above (e.g. CTOT -5 mins).
4. A flights is Late Non Compliant if departed after its CTOT plus the compliance variable listed above (e.g. CTOT +5 mins).
5. Airborne Delay = Actual Landing Time - Estimated Time of Arrival (latest value 40 minutes before arrival)
6. Airborne Delay is a non negative value or NULL if values are missing.
7. ETA is provided by EUROCAT.
8. The report calculations may be adjusted based on industry feedback.