

Indicative Compliance



Airport: YSSY-Sydney **Time Period (UTC):** 08/05/2017 5:00 - 08/05/2017 9:59 **Compliance Values:** -5 mins - +15 mins

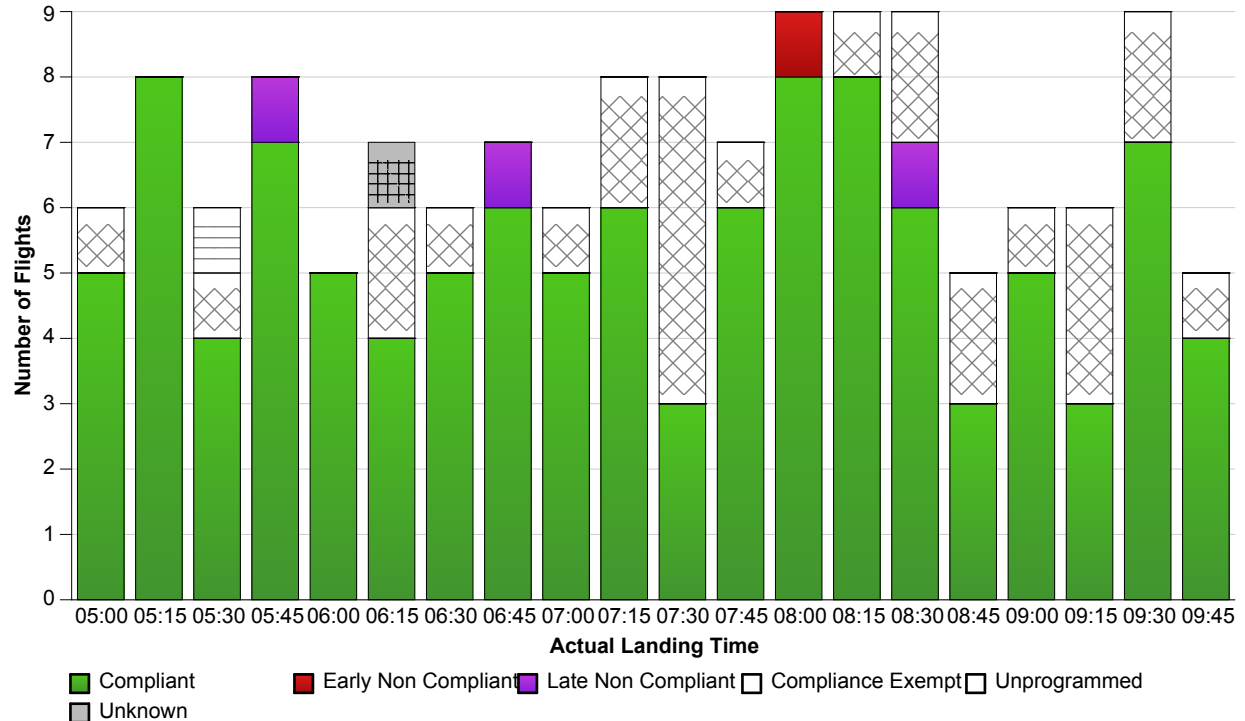
Compliance information

Compliance: 96.00%
Of Compliant Flights: 120
Of Non Compliant Flights: 5
Of Compliance Exempt Flights: 29
Of Unprogrammed Flights: 1
Of Flights With Unknown Status: 1

Runway information

Actual Runway	# Of Flights Landed
16L	64
16R	92

Note: 0 occurrence(s) where last ETA was used instead of ALDT.



Report Notes:

- Compliance:** Compliance is measured based on gate times (COBT and AOBT). Ground Delay Exempt flights are still subject to compliance with allocated COBT. *Please note that compliance with COBT is not part of this report. For flights identified as non-compliant, please advise the NOC if you consider the flight complied with COBT for further investigation.*
- Indicative Compliance:** Indicative Compliance is measured based on runway times (CTOT and ATOT).
- Compliant:** A flight is Compliant if departed between its CTOT plus & minus the compliance variables (e.g. CTOT -5 mins & CTOT +15 mins).
- Early Non Compliant:** A flight is Early Non Compliant if departed before its CTOT minus the compliance variable (e.g. CTOT -5 mins).
- Late Non Compliant:** A flight is Late Non Compliant if departed after its CTOT plus the compliance variable (e.g. CTOT +15 mins).
- Compliance Exempt:** International and Medical flights are Compliance Exempt flights.
- Unprogrammed:** A flight is Unprogrammed if it has an original ETA outside of the GDP period and landed within the GDP period.
- Unknown Status:** A flight has Unknown Status if the Compliance status cannot be established for the flight. This may be due to missing data in Harmony For ANSPs.