

# Indicative Compliance



**NB: From 15FEB2014, a new source system is being used to generate this report and it may contain errors. Quality review is ongoing.**

**Airport:** YBBN-Brisbane **Time Period (UTC):** 02/07/2014 20:00 - 03/07/2014 00:59 **Compliance Values:** -5 mins - +15 mins

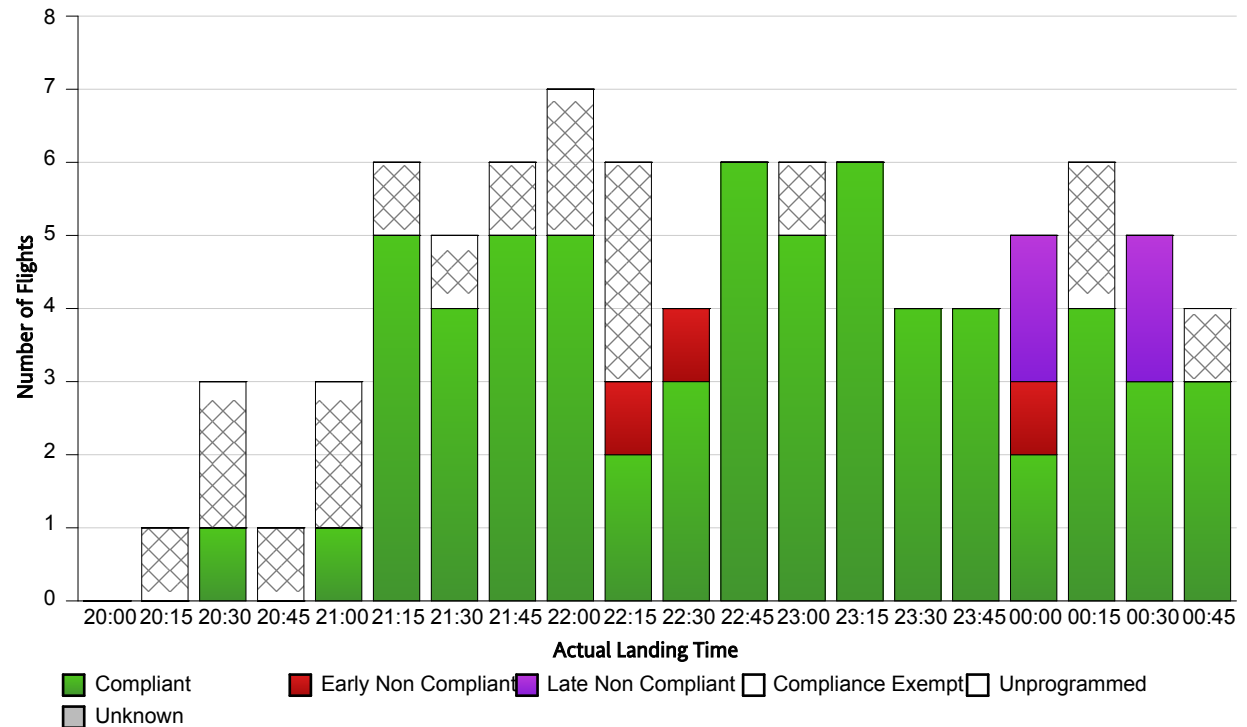
### Compliance information

**Compliance:** 90.00%  
**# Of Compliant Flights:** 63  
**# Of Non Compliant Flights:** 7  
**# Of Compliance Exempt Flights:** 18  
**# Of Unprogrammed Flights:** 0  
**# Of Flights With Unknown Status:** 0

### Runway information

Actual Runway	# Of Flights Landed
14	7
19	81

*Note: 0 occurrence(s) where last ETA was used instead of ALDT.*



### Report Notes:

- Compliance:** Compliance is measured based on gate times (COBT and AOBT). Ground Delay Exempt flights are still subject to compliance with allocated COBT. *Please note that compliance with COBT is not part of this report. For flights identified as non-compliant, please advise the NOC if you consider the flight complied with COBT for further investigation.*
- Indicative Compliance:** Indicative Compliance is measured based on runway times (CTOT and ATOT).
- Compliant:** A flight is Compliant if departed between its CTOT plus & minus the compliance variables (e.g. CTOT -5 mins & CTOT +15 mins).
- Early Non Compliant:** A flight is Early Non Compliant if departed before its CTOT minus the compliance variable (e.g. CTOT -5 mins).
- Late Non Compliant:** A flight is Late Non Compliant if departed after its CTOT plus the compliance variable (e.g. CTOT +15 mins).
- Compliance Exempt:** International and Medical flights are Compliance Exempt flights.
- Unprogrammed:** A flight is Unprogrammed if it has an original ETA outside of the GDP period and landed within the GDP period.
- Unknown Status:** A flight has Unknown Status if the Compliance status cannot be established for the flight. This may be due to missing data in Harmony For ANSPs.