

ATFM Daily Plan - Tuesday 21 September 2021

ADP Version 3



Airport	Planned GDPs	Total Arr/Dep	Affected Flights	Total Ground Delay	Av. Ground Delay	36 Hr Synoptic Forecast
YSSY	NONE	160	n/a	0	0.00	
YMML	NONE	93	n/a	0	0.00	
YBBN	NONE	275	n/a	0	0.00	
YPPH-A*	NONE^	367	n/a	289	3.70	
YPPH-D*	YPPH GDP-D 2130-0030		95	942	10.20	
Totals		895	95	1,231	1.52	

* denotes a revision has taken place

ATFM Daily Plan Summary Notes

YSSY	<p>Showers and slight risk of a thunderstorm within the TMA otherwise nil operational issues anticipated.</p> <p>Midday Update: Cloud 3000-4000ft. Showers with possible small hail, decreasing during the evening. Strong and gusty SSW winds, decreasing late evening. Moderate turbulence. ATC ADVICE: 109 movements remaining. Airborne delays are not expected to exceed 5 mins.</p>
YMML	<p>Cloud ceiling lowering in the evening with drizzle developing. Nil significant network issues anticipated.</p> <p>Midday Update: Showers or drizzle developing in the evening. Cloud about 3000-4000ft, lowering to 1500-2500ft in the evening, and possibly 800-1200ft late evening. Moderate to fresh SW winds, turning moderate WSW in the evening. ATC ADVICE: 59 movements remaining. Airborne delays are not expected to exceed 5 mins.</p>
YBBN	<p>Nil operational issues anticipated.</p> <p>Midday Update: CAVOK. Strong and gusty W to SW winds, decreasing in the evening. Turbulence. ATC ADVICE: 165 movements remaining. Airborne delays are not expected to exceed 5 mins.</p>
YPPH	<p>Nil significant weather issues tomorrow except for some strong gusty winds. GDP-D will be active due to demand. GDP-A now purged to due to increase of achievable arrival rate to 24 for rest of the day.</p> <p>Midday Update: CAVOK. Moderate NE winds, becoming light ESE in the evening. ATC ADVICE: 250 movements remaining. Airborne delays are not expected to exceed 10 mins for remainder of the day. Outside of demand peaks delays are not expected to exceed 5 minutes.</p>
Other Significant	
Change Summary:	<p>[05:57pm] Version 1: Initial. [06:58am] Version 2: Morning update [12:12pm] Version 3: Midday update</p>

Teleconference Details
 1800 062 923
 Participant Code 7207 9651
 Guest Code 3064#
 NCC: 1800 020 626
atfmu@airservicesaustralia.com

CAP THREAT: Nil

PRM: NOT REQ

YMEN SLOT SCHEME: NO

Issues expected to impact service delivery

Location	Issue/NOTAM Details
YSSY	C2103/21 RWY 16R/34L 473M NORTH END NOT AVBL DUE WIP. LDG RWY 16R NOT AVBL. FM 09 202000 TO 09 241300 DAILY 2000/1300

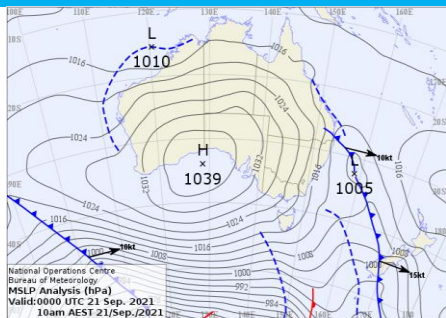
Network Weather Overview

From now to +72 hours

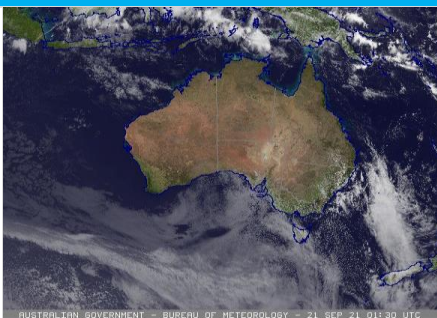
Tuesday 21 September 2021

Weather Overview

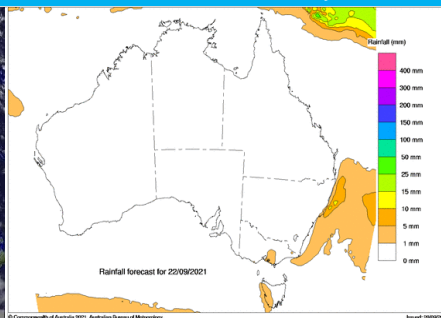
Mean Sea Level Pressure



Satellite Picture



Rainfall Outlook for today



Weather impact risk assessment Major Airports

	Brisbane	Melbourne	Perth	Sydney
PM Tuesday	CAVOK. Fresh to strong and gusty W to SW winds, decreasing in the evening. SW winds 30 to 40 knots aloft. Turbulence.	Showers or drizzle developing in the evening. Cloud about 3000-4000ft, lowering to 1500-2500ft in the evening, and possibly 800-1200ft late evening. Moderate to fresh SW winds, turning moderate WSW in the evening.	CAVOK. Moderate NE winds, becoming light E to SE in the evening.	Cloud 3000-4000ft. Showers, decreasing during the evening. Chance of small hail in the afternoon. Chance of thunderstorms within the TMA, mainly at sea. Strong and gusty SSW winds, reaching 25 to 40 knots aloft, decreasing late evening. Moderate turbulence.
AM Wednesday	CAVOK. Moderate W to SW winds, becoming S'yly late morning, S to SW winds 25 to 35 knots aloft, decreasing to 15 to 25 knots late morning. Early turbulence.	Cloud 1500-2500ft, possibly at around 800-1200ft early morning. Showers or drizzle. Light to moderate W to SW winds.	CAVOK. Light to moderate E then NE winds.	Patchy cloud 3500-5000ft. Mostly moderate W to SW winds, becoming S'yly late morning. S to SW winds 20 to 30 knots aloft early morning.
PM Wednesday	Likely CAVOK. Light to moderate SE winds, becoming light SW late evening.	Cloud 2000-3000ft. Showers and drizzle, easing. Light W to SW winds, becoming NW in the evening.	CAVOK. Light N to NE winds, becoming SW early afternoon and SE during the evening.	Likely CAVOK. Mostly moderate S to SE winds, becoming light NW during the evening.
AM Thursday	Likely CAVOK. Light SW winds, becoming E to SE late morning.	Cloud around 2000ft, lifting to 2500-3000ft late morning. Light N to NW winds, becoming moderate late morning.	CAVOK. Light E to SE winds, becoming SW late morning.	Likely CAVOK. Light W to NW winds.
PM Thursday	Likely CAVOK. Light to moderate NE winds, becoming light N to NW late evening.	Cloud ceiling 3000-4000ft. Moderate N to NW winds. NW winds 25 to 35 knots aloft late evening with possible turbulence.	CAVOK. Light to moderate SW winds, becoming SE during the evening.	CAVOK. Light NE winds, becoming W to SW in the evening and W to NW late evening.
AM Friday	Some early fog inland, likely no significant cloud or weather at the airport. Light WSW to NW winds, becoming N'yly late morning.	Likely CAVOK at first. Cloud around 3000-4000ft with showers developing during the morning. Moderate NW winds, becoming fresh and gusty W to NW during the morning. W to NW winds 25 to 40 knots aloft. Turbulence.	CAVOK. Moderate to fresh and gusty E to SSE winds, reaching 25 to 35 knots aloft with moderate turbulence. Cross wind on RWY 03.	CAVOK. Light to moderate NW winds.

Significant other phenomena potentially affecting Australian FIRs

Volcanic Ash (VA) ≥ FL200	Nil current.
Potential Tropical Cyclones	Nil.

Weather risk assessment provided by NCC Meteorological Unit – Bureau of Meteorology
Contact NCCMET for further detail or advice

Phone: 02 6268 4448
Email: nccmet@bom.gov.au

Detailed advice from major Airport MET CDM products available at Airservices NOC Portal, <https://www.airservicesaustralia.com/noc/>

SYDNEY - Nil GDP

Tuesday 21 September 2021

ATFM-CDM Notes

METCDM Notes:

[1] 2000-2359: A tight pressure gradient between a cold front to the north and a high pressure system to the west will see strong and gusty WSW winds across the region. With the SW winds for the first few hours of the day showers should mostly be offshore with cloud height about 3000ft. WSW to SW wind aloft 25/30 knots below 3000ft. Slight risk of a thunderstorm, mainly offshore.
 [2] 0000-1259: Winds becoming more S to SW bringing fast moving showers closer to the coast. Cloud will remain at about 3000-3500ft for the most part though expect periods of lower cloud and reduced visibility in passing showers. Slight risk of a thunderstorm as an upper trough moves through about midday. Showers possibly easing from about 07Z. Strong head winds, S'ly wind aloft reaching 30/40 knots below 3000ft (head wind above 30 knots most likely between 02 and 10Z). Turbulence. ILSA hedge rate suggested for cloud ceiling and showers with an X-factor of -2 for head wind.

NCC DLM Notes:

[Nil DLM Notes]

SM Notes:

[Nil SMTM Notes]

GDP Notes

Showers and slight risk of a thunderstorm within the TMA otherwise nil operational issues anticipated.

Midday Update: Cloud 3000-4000ft. Showers with possible small hail, decreasing during the evening. Strong and gusty SSW winds, decreasing late evening. Moderate turbulence.
 ATC ADVICE: 109 movements remaining. Airborne delays are not expected to exceed 5 mins.

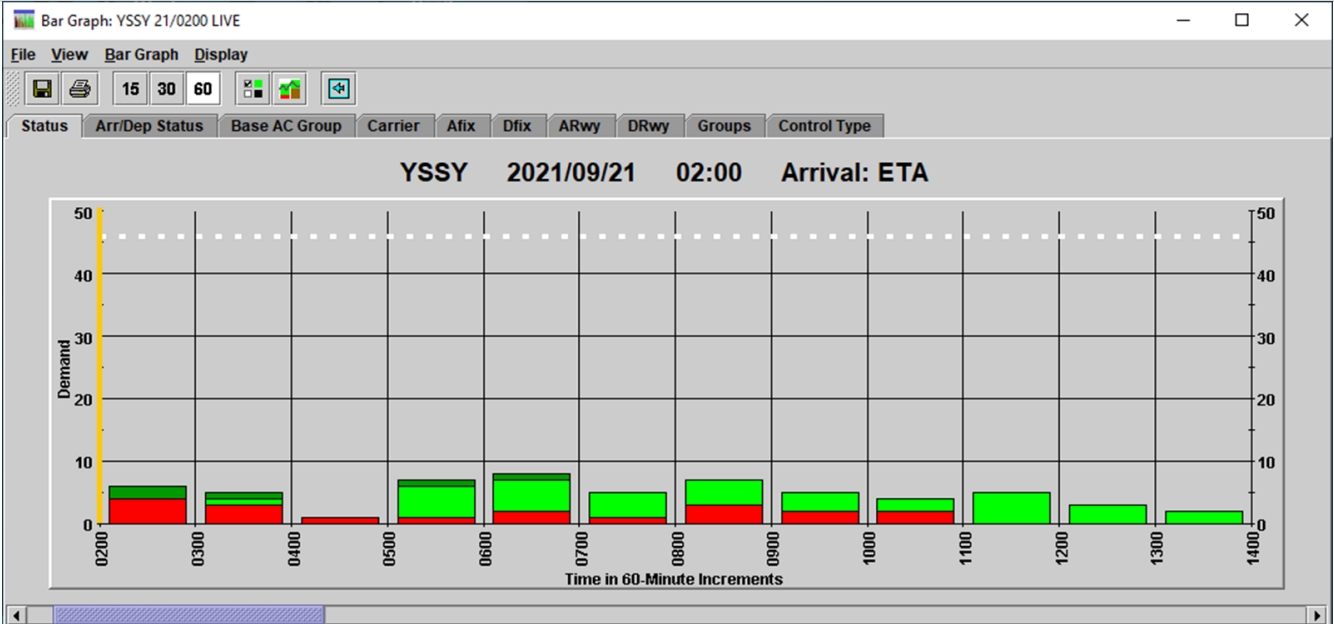
Tabulated Data

Time (Hour UTC)	202000	202100	202200	202300	210000	210100	210200	210300	210400	210500	210600	210700	210800	210900	211000	211100	211200	
Runway Mode	16 VSA	16 VSA	16 VSA	16 VSA	16 ILSA	16 ILSA	16 ILSA	16 ILSA	16 ILSA	16 ILSA	16 ILSA	16 ILSA	16 ILSA	16 ILSA	16 ILSA	16 ILSA	16 ILSA	
Rate	25	25	25	25	22	22	20	20	20	20	20	20	20	20	22	22	22	

Segmentation and Notes

METCDM Notes	1	1	1	1	2	2	2	2	2	2	2	2	2	2	2	2	2	0
Segmentation	1	1	1	1	1	1	1	1	2	2	2	2	2	2	2	2	2	

Bar Graph



MELBOURNE - Nil GDP

Tuesday 21 September 2021

ATFM-CDM Notes

METCDM Notes:

- [1] 2000-2259: Moist vigorous SW'ly flow in the low levels with cloud ceiling 2000-2500ft. Intermittent showers likely with lower ceiling and reduced visibility at times.
- [2] 2300-0659: Conditions expected to improve from about 23Z with cloud ceiling lifting and showers clearing, there is small risk of isolated showers in the area though till about 02Z. Also, risk of crosswind above 20 knots at times till about 04Z.
- [3] 0700-1359: Wind turning back to more moist WSW flow with ceiling possibly dropping. Showers/possibly drizzle likely in the area from about 08Z. Risk of IMCA ceiling from about 09Z.

NCC DLM Notes:

[Nil DLM Notes]

SM Notes:

[Nil SMTM Notes]

GDP Notes

Cloud ceiling lowering in the evening with drizzle developing. Nil significant network issues anticipated.

Midday Update: Showers or drizzle developing in the evening. Cloud about 3000-4000ft, lowering to 1500-2500ft in the evening, and possibly 800-1200ft late evening. Moderate to fresh SW winds, turning moderate WSW in the evening.

ATC ADVICE: 59 movements remaining. Airborne delays are not expected to exceed 5 mins.

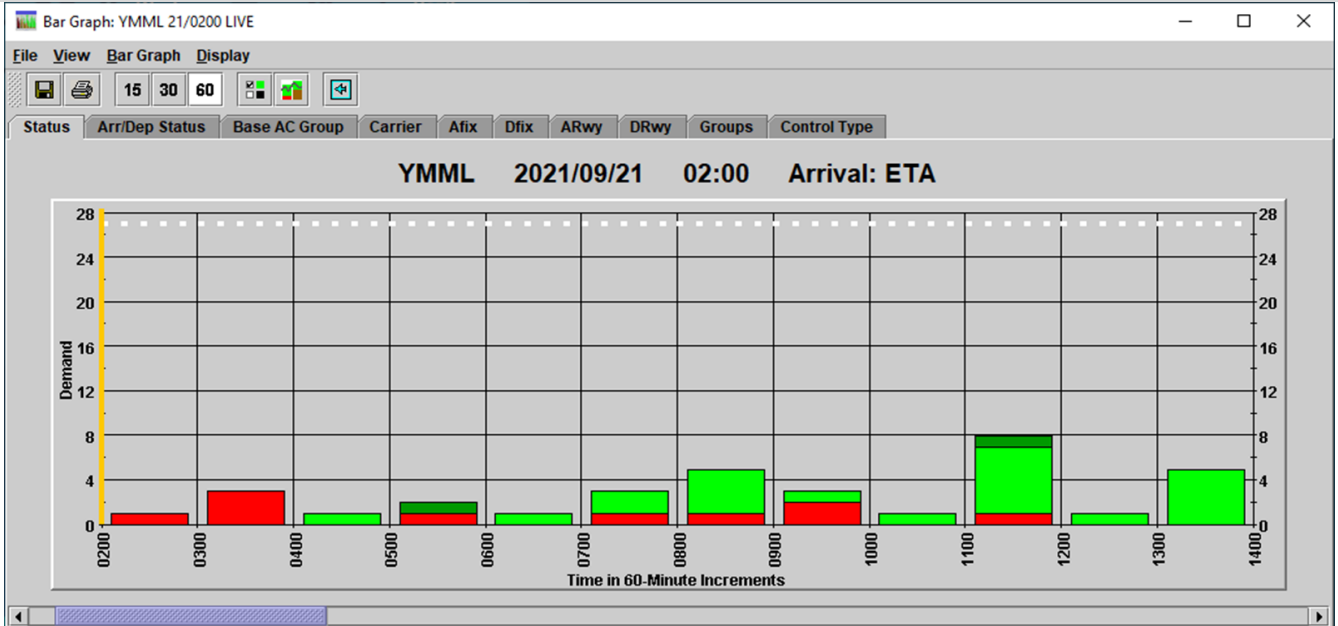
Tabulated Data

Time (Hour UTC)	202000	202100	202200	202300	210000	210100	210200	210300	210400	210500	210600	210700	210800	210900	211000	211100	211200	211300
Runway Mode	16/27 VMCB	16/27 VMCB	16/27 VMCA	16/27 VMCA	16/27 VMCA	16/27 VMCA	16/27 VMCA	16/27 VMCA	16/27 VMCA	16/27 VMCA	16/27 VMCA	16/27 VMCB	16/27 VMCB	16/27 VMCB	16/27 VMCB	16/27 VMCB	16/27 VMCB	16/27 VMCB
Rate	22	22	24	25	25	25	27	27	27	27	27	25	23	23	23	23	23	23

Segmentation and Notes

METCDM Notes	1	1	1	2	2	2	2	2	2	2	2	3	3	3	3	3	3	3
Segmentation	1	1	1	1	1	1	1	1	2	2	2	2	2	2	2	2	2	2

Bar Graph



BRISBANE - Nil GDP

Tuesday 21 September 2021

ATFM-CDM Notes

METCDM Notes:

[1] 2000-2159: A low pressure trough moving through with showers in the area, clearing to sea only by 21Z and outside the TMA by 22Z, slight risk of TMA thunderstorms.
 [2] 2100-1259: Fresh and gusty SW wind change somehow between 21-22Z. SW wind strengthening during the day with possible crosswind about 20-25 knots, most likely between 03 and 07Z. Wind easing to moderate during the evening hours.

NCC DLM Notes:

[Nil DLM Notes]

SM Notes:

[Nil SMTM Notes]

GDP Notes

Nil operational issues anticipated.

Midday Update: CAVOK. Strong and gusty W to SW winds, decreasing in the evening. Turbulence.
 ATC ADVICE: 165 movements remaining. Airborne delays are not expected to exceed 5 mins.

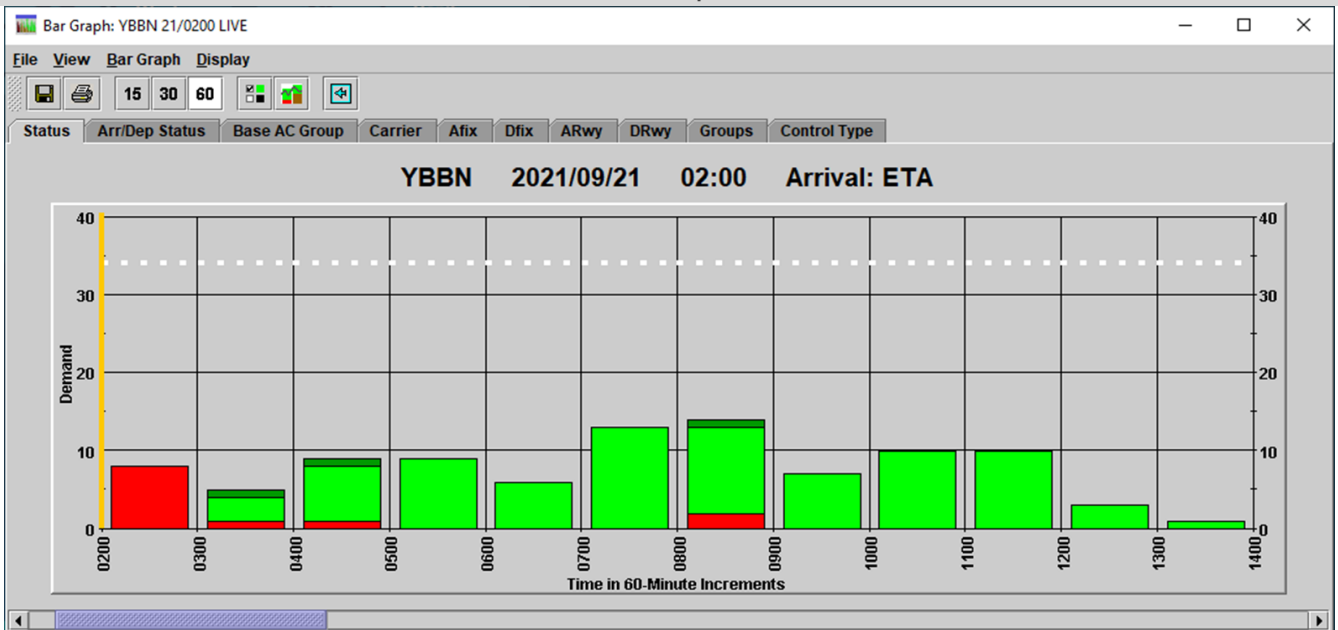
Tabulated Data

Time (Hour UTC)	202000	202100	202200	202300	210000	210100	210200	210300	210400	210500	210600	210700	210800	210900	211000	211100	211200	
Runway Mode	01 VMC	01 VMC	19 VMC	19 VMC	19 VMC	19 VMC	19 VMC	19 VMC	19 VMC	19 VMC	19 VMC	19 VMC	19 VMC	19 VMC	19 VMC	19 VMC	19 VMC	
Rate	34	34	34	34	34	34	34	34	34	34	34	34	34	34	34	34	34	

Segmentation and Notes

METCDM Notes	1	1&2	2	2	2	2	2	2	2	2	2	2	2	2	2	2	2	0
Segmentation	1	1	1	1	1	1	1	1	2	2	2	2	2	2	2	2	2	

Bar Graph



PERTH Arrivals - NONE^
Arrivals - YPPH GDP-D 2130-0030

Tuesday 21 September 2021

ATFM-CDM Notes

METCDM Notes:

- [1] High pressure system over the Bight is directing dry NE'ly flow into the area. Gusty surface wind expected in the morning, reaching 30, possibly 35 knots aloft. Risk of crosswind above 20 knots. Turbulence.
- [2] 0000-0859: CAVOK conditions as dry NE flow to continue throughout the day. 20/25 knots below 3000ft easing to below 20 knots by 03Z.
- [3] 0900-1359: Reviewed on request. Most likely light winds, mainly from the E or ESE. There is a slight chance of winds being more SE between about 11 and 13Z which could favour RWY 21 but a similar MET CDM rate. CAVOK.

NCC DLM Notes:

- [1] AAR 24 for remainder of the day.

SM Notes:

- [1] X Factor -4 required due to resourcing constraints in ML Centre

GDP Notes

Nil significant weather issues tomorrow except for some strong gusty winds. GDP-D will be active due to demand. GDP-A now purged to due to increase of achievable arrival rate to 24 for rest of the day.

Midday Update: CAVOK. Moderate NE winds, becoming light ESE in the evening.

ATC ADVICE: 250 movements remaining. Airborne delays are not expected to exceed 10 mins for remainder of the day. Outside of demand peaks delays are not expected to exceed 5 minutes.

Tabulated Data

Time (Hour UTC)				210100	210200	210300	210400	210500	210600	210700	210800	210900	211000	211100	211200	211300	
Runway Mode				03/06 VMC	03/06 VMC	03/06 VMC	03/06 VMC	03/06 VMC	03/06 VMC	03/06 VMC	03/06 VMC	03/06 VMC	03/06 VMC	03/06 VMC	03/06 VMC	03/06 VMC	
Rate-Arrs				24	24	24	24	24	24	24	20	20	20	20	20	20	
Rate-Depts																	

Segmentation and Notes

METCDM Notes				2	2	2	2	2	2	2	2	3	3	3	3	3	
Segmentation			1	1	1	1	1	2	2	2	2	2	2	2	2	2	

Bar Graph

