

NOWRA**ELEV 400****AVFAX CODE 2122**

NSW

UTC +10

YSNW

345656S

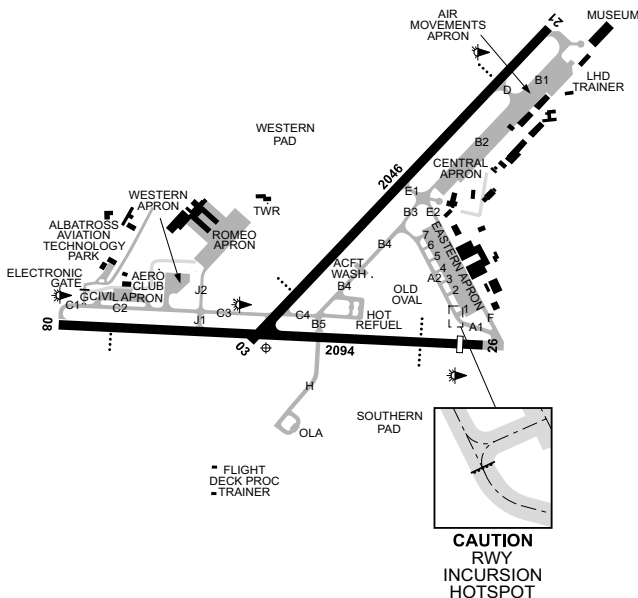
1503213E

VAR 13 DEG E

MIL

AD OPR NAVY, Naval Air Station Nowra, NSW, 2540. Email:

albatross.airoperations@defence.gov.au. PH Airfield Coordination Centre: 02 4449 2161: AH Duty Officer 0411 127 367.

**REMARKS**

1. **MIL OPS ONLY.** NAVAID training for CIV ACFT AVBL outside of ATS hours.
2. Visiting MIL ACFT 24HR PN to Airfield Coordination Centre. All visiting MIL aircrew conducting flying activities at Nowra (YSNW) and Jervis Bay Airfield (YJBY) are to read and comply with FIHA AD2 supplement Nowra.
3. Due to proximity of Navy restricted areas, NWX and TSX should be included when checking NOTAM.

HANDLING SERVICES AND FACILITIES

Fuel not AVBL for visiting civil ACFT.

F44, O147, H576, H515, E10, E13.

Aircraft PIC should be prepared to refuel aircraft as only tanker driver provided.

General

MARSHALLING Provided - PN.

ACFT wash FAC on the FLW FREQ:

WASH 1 - EC135 size ACFT - 376.75;

WASH 2 - H60 size ACFT - 377.75;

WASH 3 - C130 size ACFT - 378.75.

RESCUE AND FIREFIGHTING SERVICES

1. CAT 5 AVBL 2300-1300 UTC MON-THU and 2300-0600 UTC FRI EXC PH.
2. During HDS CAT 5 2200-1300 UTC MON-THU and 2200-0500 UTC FRI EXC PH.
3. CAT 4 OT.
4. CAT 6 AVBL 72HR PN.
5. CAT 5 or CAT 6 outside published HR will be at cost to user.
6. RFFS MNT 118.85MHz outside AD HR.

APRONS AND TAXIWAYS

- Low strength bitumen areas outside TWY sidelines not AVBL for taxi.
- TWY G and Civil APN PCN 12/C.
- TWY J, H and R APN PCN 19/C.
- Central APN PCN 7/C.
- TWY B and C infringe RWS. MNM 41M wing tip CLR BTN C17 on RWY 03/21 and C17 on TWY B. MNM 11M wing tip CLR BTN C17 on RWY 08/26 and C17 on TWY C. ACFT with a wing span of 36M or greater can perform LDG or TKOF OPS to the RWY with the respective parallel TWY being occupied provided that:
 - conditions are VMC;
 - neither ACFT is subject to an emergency;
 - the RWY is dry or wet but not contaminated;
 - the parallel TWY is occupied by an ACFT with a wingspan less than 36M.
- TWY A2 Inverts 1 and 2 are 14M wide, fixed wing ACFT to exercise caution when using these inverts. Inverts 3 to 6 are 6.6M wide, AVBL MIL HELO only. Invert 7 is 19M wide.
- TWY E2 and J2 helicopters only. Fixed wing approved on REQ.
- TWY A1, C and F shoulders 1-2M WID.

SURFACE MOVEMENT GUIDANCE

- Distance to run markers (lit) located both sides of all runways.
- TWY A RWY 26 holding point located at non-standard position on TWY A2 prior to TWY A1. Holding point marked by pavement marking, lights and MAG sign.

AERODROME OBSTACLES

- Lit OBST. MET sensor masts 43FT AGL outside RWS as follows:
 - Mast S ABM RWY 26 PAPI, N ABM HP C/RWY 03, W RWY 21 ABM ILS;
 - Masts at FLT deck PROC trainer helipad 0.37NM S THR RWY 03.
- RWY 21 2% APCH SFC infringed by:
 - Trees both sides of RCL WI 493M FM THR up to 63FT ABV THR ELEV.
 - Fence Along Road on RCL WI 422M FM THR 25FT ABV THR ELEV.
 - Transient OBST on Road 177M FM THR along RCL up to 18FT ABV THR ELEV.
 - Transient OBST on Road 435M FM THR along RCL up to 36FT ABV THR ELEV.
- Lit OBST radar 45FT AGL BRG 327 MAG 0.2NM FM ARP.
- TACAN 51FT AGL BRG 240 MAG 350M FM ARP. Infringes RWY 03/21 TKOF/APCH SFC by 42FT.

METEOROLOGICAL INFORMATION PROVIDED

- TAF CAT B, METAR/SPECI, TAF3 issued hourly AVBL during MO HR (2100-1000 UTC MON-THU, 2100-0500 UTC FRI, EXC PH, OT by TAF RMK/NOTAM).
- AWIS Phone 02 9353 6444 - Report faults to BoM.
- AWIS FREQ 125.65, 280.4, 359 - Report faults to 02 4424 1269.
- MET INFO AVBL FM Airservices Pilot Briefing. Elaborative briefing FM RAN MO 02 4424 1269 when staffed. AH AVBL FM MWO 02 9296 1527.

PHYSICAL CHARACTERISTICS

- | | | | | | |
|-------|-----|-----|-----------------------|--------|---------|
| 03/21 | 032 | 67a | PCN 43/F/C/2.00 MPa/T | WID 45 | RWS 230 |
| 08/26 | 082 | 69a | PCN 43/F/C/2.00 MPa/T | WID 45 | RWS 150 |
- Movement Area sweeping occurs MON-FRI (PH excluded). WAE will clear/vacate when OPS are indicated.
 - RWY 03/21 and 08/26 shoulders 1-2M WID.

AERODROME AND APPROACH LIGHTING

| | | | |
|-----------|------------|--------------|---------------|
| RWY 03/21 | HIRL | PAL+AA 122.2 | SDBY PWR AVBL |
| RWY 03/21 | PTBL(2) | | |
| RWY 03 | PAPI(1) | 3.0 DEG52FT | SDBY PWR AVBL |
| RWY 21 | HIAL-CAT I | | SDBY PWR AVBL |
| RWY 21 | PAPI(3) | 3.0 DEG50FT | SDBY PWR AVBL |
| RWY 08/26 | HIRL | PAL+AA 122.2 | SDBY PWR AVBL |
| RWY 08/26 | PTBL(2) | | |

| | | | |
|-----------|---------|-------------|---------------|
| RWY 08/26 | SALS | | SDBY PWR AVBL |
| RWY 08 | PAPI(4) | 3.0 DEG57FT | SDBY PWR AVBL |
| RWY 26 | PAPI | 3.0 DEG52FT | SDBY PWR AVBL |

- (1) Left side.
- (2) 30MIN PN
- (3) Right side only. Aligned with ILS GP.
- (4) Right side
1. **ALS type and length**
 - a. RWY 21 - distance coded CL: 724M.
 - b. RWY 08/26 - distance coded CL: 240M.
2. Caution: some obstruction LGT not Light Enhancement device (NVG) compatible.
3. SDBY PWR AVBL. 15SEC nominal interruption.

OTHER LIGHTING

ABN ALTN 10 WG ELEV 681FT. Co-located with radar antennae BRG 055 DEG
MAG 1.86NM FM ARP.

TWY light: Green CL.

ATS AND AERODROME COMMUNICATION FACILITIES

| | | |
|------|-----------------------|---|
| FIA | MELBOURNE CENTRE | 121.2 Circuit Area (Outside APP/TWR HR) |
| ACC | NOWRA CENTRE | 132.3 325.8 |
| ACD | NOWRA DELIVERY | 128.35 (3) |
| AFIS | NOWRA INFORMATION (5) | 118.85 |
| APP | NOWRA APPROACH | 123.5 243.0 352.15 |
| ATIS | NOWRA | 125.65 (4) 280.4 (4) 359 (2) |
| SMC | NOWRA GROUND | 135.85 |
| SMCV | NOWRA GROUND | 122.05 |
| TWR | NOWRA TOWER | 118.85 243.0 (1) 267.2 359 (2) |

- (1) Guarded ATS HR. Test transmissions on 243.0 not exceeding 10 SEC 2115-2130 on the first working day of each week.
- (2) Transmits voice to ACFT with COM failure.
- (3) Start Clearance not RQ unless specified by NOTAM or ATIS.
- (4) ATIS and AWIS BCST (AWIS not AVBL DRG ATS HRS) AVBL H24 on 125.65, 280.4, 359 and Phone 02 9353 6444.
- (5) Nowra AFIS, IAW AIP GEN 3.3, OPR during HR of CTAF. AFIS OPR status notified on ATIS. IFR ACFT are to make taxi, DEP and ARR reports to ML CEN for SARWATCH during AFIS. AD LGT controlled by AFIS OPR.
1. ATS hours notified by R421A/B NOTAM (refer NWX). Outside ATS hours CTAF procedures apply. ATS may be ACT at short notice, check YSNW ATIS for status.
2. TAR AVBL ATS HRS to meet planned MIL RQMNTS. MAINT period when not RQ for MIL purposes as notified by NOTAM.
3. Automatic retransmit FAC exists BTN FLW FREQ: 123.5/352.15/118.35, 118.85/267.2.
4. FAC may be unmanned DRG ATS HR.
5. Nowra Approach FREQ 118.35: Jervis Bay (Bhewerre Ridge Repeater) - Use only when directed by ATC or when poor COM with APP BTN YJBY S to UDA.
6. Listening watch not AVBL.

RADIO NAVIGATION AND LANDING AIDS

| | | | | | |
|-----|-----|---------------|-----------|------------|-----|
| DME | INA | 108.5/ 22X | 345613.6S | 1503253.3E | (4) |
| | | (RWY21) | | | |
| GP | INA | 329.9 (RWY21) | 345613.6S | 1503253.2E | (3) |
| ILS | INA | 108.5 (RWY21) | 345706.0S | 1503159.1E | (2) |
| LOC | INA | 108.5 (RWY21) | 345706.0S | 1503159.1E | |
| NDB | NWA | 359 | 345704.4S | 1503147.2E | (1) |
| TAC | NWR | 112.4/ 71X | 345703.8S | 1503216.8E | (5) |

Range 90

- (1) Limitations:
 - a. Unreliable at MSA in sector 170DEG through north to 030DEG beyond 10NM. Voice AVBL to ACFT with COM failure.
 - b. Limited coverage to 72NM on 245 RAD at all levels.
- (2) ILS Critical Area not protected outside ATS HR.
- (3) GP not to be used outside 6 DEG right of centreline.
- (4) Antenna ELEV 118FT.
- (5) Terrain shielding BLW 4,300FT beyond 25NM BTN 090DEG to 095DEG and 240DEG to 249DEG.

All NAV AIDS Pilot MNT outside ATS HR.

LOCAL TRAFFIC REGULATIONS

1. Start CLR not RQ unless specified by NOTAM or ATIS. When specified by NOTAM or ATIS, start CLR RQMNTS shall apply to all ACFT WI 5NM of AD due PJE OPS.

2. TRAINING FLIGHTS

- a. 24HR PPR for all visiting ACFT intending to conduct an INSTR APCH FM Airfield Coordination Centre and a PLN must be submitted for NAVAID training.
- b. For CIV ACFT, a safety pilot is to be carried as per *CASR 91.720*.
- c. Visiting ACFT conducting practice INSTR APCH may be instructed to go-around by TWR or delayed by APP to afford LCA RAN circuit/TRNG ACFT priority.
- d. Reciprocal IFR INSTR APCH training to duty circuit RWY not permitted.
- e. INSTR APCH training ACFT to RWY 21 and 26 may be instructed by TWR on first contact to reach 2,000FT AMSL by the upwind THR due circuit ACFT on crossing RWY. ACFT are to initiate the missed approach in advance to reach this requirement.
- f. Low overshoot or go-around subject to ATC approval when no conflicting circuit ACFT.
- g. IFR practice INSTR APCH BLW 3,000FT AMSL may not be AVBL to visiting ACFT.
- h. In VMC delays may be avoided or reduced by operating VFR
- i. Prior approval does not guarantee use of the aid.
- j. NAV and LDG LGT are to be on prior to intercepting final.

3. HOT LANE - MILITARY

Upon declaration of hot lane, airborne MIL ACFT are to initiate a go-around, maintain circuit ALT or proceed as directed by ATC. ACFT on the RWY are to immediately position:

- a. Left side of the RWY on 21/08;
 - b. Right side of the RWY on 03/26, and
 - c. ACFT beyond the 1,000FT DIST to run marker board are to expedite TAX.
4. No overflight of hot refuel facility (ADJ TWY B4) BLW 200FT AGL.
 5. Emergency Services/MED ACFT to meet Ambulance for transfer are to use the APN in front of fire station located east of TWY E1.

FLIGHT PROCEDURES

1. AIR TRAFFIC SERVICES

- 1.1. Class D ATS provided to AUTH MIL and CIV ACFT in accordance with AC SI OPS 03-16 within R421. Non AUTH ACFT receive Class C service with respect to all ACFT in R421. Class C VMC applies in all cases in R421. All VFR ACFT, EXC local MIL, REQ entry R421 must CTC ACD (128.35) for code and AWY CLR prior to entry.

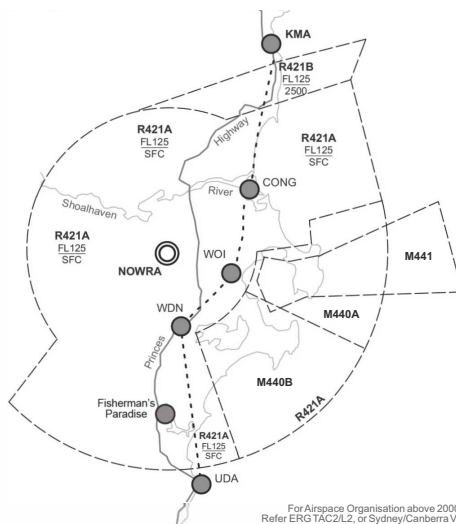
2. FLIGHT PLANNING

- 2.1. All FLT planned to take place in R421 RQ submission of FLT details – excluding Circuit Area (CIRA) OPS and Mercy flights.
- 2.2. FLT notification acceptance by radio is subject to ATS workload. VFR OPS in R421 should PLN prior to DEP. Failure to do so may result in DLA.

3. CIRCUIT PROCEDURES

- 3.1. All ACFT TAX for OPS confined to the CIRA shall CTC Nowra SMC to pass FLT details and obtain AWY CLR. Circuit OPS at Nowra occur WI the CIRA, a 5NM radius of Nowra ARP, SFC to 2,000FT.
- 3.2. Unless ATC direct otherwise, CCTS will be conducted as follows:
 - a. RWY 08 - Right;
 - b. RWY 21 - Right;
 - c. Fixed wing circuit ALT is 2,000FT AMSL;
 - d. Rotary wing circuit ALT is 1,200FT AMSL.

- e. MIL HEL OPR CCTS to W Pad, S Pad and Flight Deck PROC Trainer not ABV 1,500FT AMSL.
- 3.3. Continuous IFR CCTS not permitted.
- 3.4. Mixed rotary wing and fixed wing CCTS subject to ATC approval and LCA MIL priority.
- 4. **DEPARTURE PROCEDURES**
Unless otherwise directed, DEP local ACFT transfer automatically FM TWR to APP WI 1NM of upwind THR EXC for local HEL with transfer WI 1NM of AD BDRY.
- 5. **VFR ENTRY AND TRANSIT PROCEDURES**
- 5.1. VFR ACFT REQ to enter or transit R421 are to contact ACD on 128.35MHz for an SSR code and CLR excluding ACFT PLN as mercy FLT. VFR ACFT should submit PLN to reduce DLA in processing. If CLR is not immediately AVBL remain in Class G airspace.
- 5.2. A GA lane is established for VFR transit of R421A;
 - a. Transit Route: a TR joining KMA, CONG, WOI, WDN and UDA, not ABV 2,000FT AMSL; and
 - b. Transit R airspace at KMA southbound and prior to UDA northbound.
 - c. M440A/B ACT concurrently with R421 expect alternate route: TR joining KMA, CONG, WDN, Fisherman's Paradise, UDA, not ABV 2,000FT AMSL by day only.



- 5.3. SVFR permitted IAW the AIP for civil ACFT transiting R421 only. OPS such as SVY not permitted SVFR.
- 6. **INITIAL AND PITCH**
 - a. IP is 5NM on final for the assigned RWY, ACFT are to establish at 2,000FT AMSL straight and level prior to IP. Once approved by ATC, ACFT may manoeuvre off TR to set up for initial.
 - b. ATC may vertically restrict conflicting ACFT. ACFT will receive relevant traffic by the IP; ACFT are to pitch into the circuit from the dead side and may be subject to positive control and sequencing.
 - c. Subject to ATC approval, low breaks may occur not below 900FT AMSL (APRX 500FT AGL).
 - d. FLT CAT for ARR ACFT via initial and pitch is to be IAW Air Command SI (OPS).
- 7. **REMOTELY PILOTED AIRCRAFT SYSTEM (RPAS)**
- 7.1. The FLW permanent small RPAS (less than 25KG) areas exist:
 - a. Thurgate Oval, Bomaderry PSN 345124S 1503618E (BRG 016 MAG 6.5NM FM ARP) and Bomaderry Oval, Bomaderry PSN 345124S 1503624E (BRG 019 MAG 6.5NM FM ARP). OPR BTN 2130-1100 UTC (2030-1000 UTC HDS) DLY, WI 0.5NM up to 200FT AGL.
 - b. Model ACFT OPR SAT/SUN/PH HJ TWY A up to 400FT AGL (will land on receipt of CTAF broadcast),

- c. Model ACFT OPR HJ WI 500M RAD OF PSN 345413.31S 1503521.69E (Archer Racecourse) BRG 030MAG 3.9NM FM ARP. OPR will MNT CTAF. SFC TO 400FT AGL when R421A/B ACT (up to 1,000FT with ATC approval). SFC to 1,000FT AGL when R421A/B deactivated.
 - d. Model ACFT OPR HJ WI 500M RAD of PSN 344955.80S 1503719.70E (Fletcher's Lane) (BRG 018MAG 8.1NM FM ARP). OPR will MNT CTAF, SFC to 400FT AGL when R421A/B ACT (Up to 1,000FT with ATC approval), SFC to 1,000FT AGL when R421A/B deactivated.
- 7.2. RPAS requests and enquiries are to be sent to: nowra.rpas@defence.gov.au with at least 10 business days PN. RPAS approval is subject to all MIL OPS and status of active restricted/military operating areas may have additional restrictions imposed or be cancelled at short notice.
- 7.3. When activated by NOTAM requests for RPAS OPS WI M441 and M440A/B will not be available.
8. **OUTSIDE TWR HR**
- a. MIL HEL OPR CCTS to W Pad, S Pad and Flight Deck PROC Trainer not ABV 1,500FT AMSL. Other HEL CCTS 1,200FT AMSL.
 - b. In the event of an EMERG, ACFT OPR at YSNW on an unattended airfield basis are to declare the EMERG on Melbourne Centre, FREQ 121.2. Additionally when WI 10NM of YSNW, MIL ACFT are to advise details to RFFS watch attendant CS "Base Fire" on FREQ 118.85.

CTAF - AFRU 118.85

Outside ATS HR.

NOISE ABATEMENT PROCEDURES

1. Fast jet/turboprop departures RWY 21:
For noise abatement climb to 1,500FT on RWY HDG before commencing a turn onto track.
2. Noise sensitive area SFC-900FT AMSL S of AD WI RWY 08/26 circuit area:
345744.82S 1503109.72E
345821.60S 1503106.24E
345813.56S 1503138.34E
345751.18S 1503154.30E

ADDITIONAL INFORMATION

1. SEV downdraft may be experienced WI 1NM on final RWY 26 during W wind ABV 7KT.
2. Rifle range 060/4.2NM ARP. ACT is indicated by R flags.
3. 23M pistol firing range 323/1.4NM ARP. ACT is indicated by R flags.
4. MIL ACFT may conduct OPS WI 50NM of YSNW using Light Enhancement devices and may not display external lighting. SFC-1,500FT AGL. Outside ATS HR ACFT will display external lighting on receipt of CTAF call FM other ACFT.
5. Bird hazard exists.
6. All ACFT OPR IN M440, M441 and M444 when ACT are not SUBJ to an ATS from Nowra ATC and OPR SUBJ to the COND imposed by Navy Fleet HQ Potts Point NSW.
7. PJE HX.
8. Non RDO equipped hang gliders OPR in VCY of Mount Cambewarra.
9. Model ACFT OPR WI VCY of AD, see *Flight Procedures*.
10. Caution: Outside TWR HR non RDO equipped AD support vehicles OPR on APN and TWY.

CHARTS RELATED TO THE AERODROME

1. WAC 3456.
 2. MIL Aerodrome Obstruction Chart Type A: Dec 2017.
 3. Also refer to AIP Departure and Approach Procedures.
-