

ADELAIDE**ELEV 20****AVFAX CODE 5001**

SA

UTC +9:30

YPAD

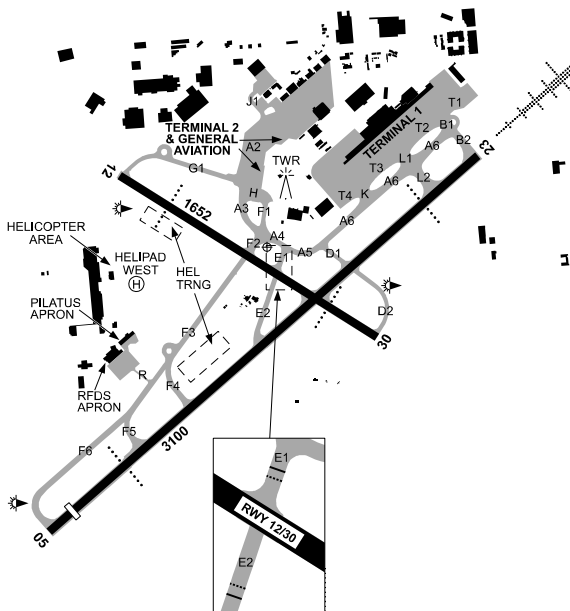
345642S

1383150E

VAR 8 DEG E

CERT

AD OPR Adelaide Airport Limited (AAL), 1 James Schofield Drive, Adelaide International Airport, Adelaide, SA, 5950. PH 08 8308 9211: H24 8154 9444. Fax 08 8308 9311.



CAUTION
RWY INCURSION
HOT SPOT

REMARKS

This AD is a Security Controlled Airport.

HANDLING SERVICES AND FACILITIES

AIR BP: 1830-1330 UTC. Phone 08 8234 4677, Mobile 0410 566 059, Fax 08 8234 3617.

AH 45MIN PN. AVGAS, JET A1 and JET/FSII. BP Carnet Card, Sterling Card or Account only.

MOBIL: H24. PH 08 8234 4844, Fax 08 8234 4741, Mobile 0418 121 221, JET A1 only. Mobil account, World Fuel Services, UVair cards and authorisations accepted.

Viva Energy Australia: H24. Mobile 0447 238 327. JET A1, AVGAS and JetPlus. Fuel2Sky Carnet Cards or Credit Cards (VISA and MasterCard only).

General

The AD OPR does not provide ACFT marshalling services. All requests for ACFT marshalling should be directed to the Airlines or a FBO.

RESCUE AND FIREFIGHTING SERVICES

1. CAT 9: 2015-1345 UTC (1HR earlier HDS).
2. CAT 7: 1345-2015 UTC (1HR earlier HDS).
3. EMERG FREQ 131.0 MHz AVBL H24
4. Water Rescue Service AVBL H24

APRONS AND TAXIWAYS

1. Helipad West Lit.
2. HLS not AVBL for HEL ABV 9,000KG.
3. TWY L2 AVBL for ACFT up to Code F (A380).

AERODROME OBSTACLES

Lit BLDG 591FT AMSL BRG 055DEG MAG 8,355M FM SOT RWY 05.

METEOROLOGICAL INFORMATION PROVIDED

1. TAF CAT A, METAR/SPECI, TAF3 H24, AD WRNG, WS WRNG.
2. AWIS PH 08 8150 3800 - Report faults to BoM.
3. MET INFO AVBL FM Airservices Pilot Briefing. Elaborative briefing FM MWO 08 8366 2773.

PHYSICAL CHARACTERISTICS

05/23	042	102a	PCR 1290/F/D/W/T Grooved	WID 45	RWS 280
12/30	115	54a	PCR 700/F/D/W/T Grooved	WID 45	RWS 280

AERODROME AND APPROACH LIGHTING

RWY 05/23	HIRL		SDBY PWR AVBL
RWY 05/23	MIRL		SDBY PWR AVBL
RWY 05	PAPI	3.0 DEG61FT	SDBY PWR AVBL
RWY 23	HIAL-CAT I(1)		
RWY 23	PAPI	3.0 DEG59FT	SDBY PWR AVBL
RWY 12/30	MIRL		SDBY PWR AVBL
RWY 12/30	PAPI	3.0 DEG51FT	SDBY PWR AVBL

(1) Aligned with ILS GP

1. **ALS type and length**
 - a. RWY 23 - distance coded CL: 801M.
2. RWY edge light spacing: 05/23: 57M; 12/30: 59M.
3. For B747 OPS, the THR wheel clearance height does not meet ICAO requirements. Pilots should make adjustment accordingly.

OTHER LIGHTING

1. Secondary PWR switchover time: 1 SEC during LVP, 15 SEC OT.
2. TWY LGT: Green CL.
3. Helipad lighting AVBL SDBY PWR AVBL.
4. RWY 05/23 RWY guard lights at all TWY/RWY intersections.

ATS AND AERODROME COMMUNICATION FACILITIES

ACD	ADELAIDE DELIVERY	126.1
APP/DEP	ADELAIDE APPROACH	118.2 (2) 124.2 (3) 128.6 (4) 243.0 (5) 306.3 (4)
ATIS	ADELAIDE ATIS	116.4 134.5
SMC	ADELAIDE GROUND	121.7
TWR	ADELAIDE TOWER	120.5
VOLMET	AUSTRALIA	6676 (1) 11387 (1)

- (1) H24, BCST 00 - 05 & 30 - 35. Refer AIP GEN 3.5.
- (2) WI 36NM of Adelaide SE of extended CL RWY 05/23.
- (3) WI 36NM of Adelaide on and NW of extended CL RWY 05/23.
- (4) WI 50NM N of Adelaide, Edinburgh CTR and Restricted Areas H24.
- (5) EMERG FREQ. FREQ will be tested 2130-2330 Local WED. Test transmissions up to 10 SEC duration may be made during these times.

RADIO NAVIGATION AND LANDING AIDS

DME	AD	116.4/111X	345649.5S	1383127.9E	(1)
VOR	AD	116.4	345649.1S	1383128.3E	
DME	IAD	109.7/ 34X	345636.9S	1383230.1E	(2)
		(RWY23)			
GP	IAD	333.2 (RWY23)	345636.7S	1383229.8E	
ILS	IAD	109.7 (RWY23)	345735.4S	1383055.1E	
LOC	IAD	109.7 (RWY23)	345735.4S	1383055.1E	

- (1) Antenna ELEV 35FT.
- (2) Antenna ELEV 30FT.

LOCAL TRAFFIC REGULATIONS

1. ACFT PARKING

- a. TWY F4 not AVBL to ACFT ABV Code D.
- b. TWY D1, E1 and E2 not AVBL to ACFT ABV Code C.
- c. TWY A2 NE of TWY G1 restricted to MAX Code C (B737) ACFT.
- d. RESTRICTION: ACFT ABV Code C to execute 180DEG turns at RWY 23 THR, RWY 05 end and adjacent TWY F5. RWY 23 THR 180DEG turns not AVBL to A350, A380, B777-300, B787-10, B747-8 ACFT.
- e. RESTRICTION: RWY 12/30 Not AVBL to ACFT ABV Code C (TKOF) and Code D (Landing).
- f. RESTRICTION: ACFT ABV Code D to use TWY A3 to A6, B1, B2, F2 to F6 except F4, T1 to T3, K, L1 and L2 only.
- g. All aircraft must provide their parked position/gate number to ATC on acknowledgement of airways clearance.
- h. ENG starting involving the use of more than idle PWR RQ ATC clearance.
- i. T1 Apron - all code C ACFT are required to push back in E direction only.
- j. The following taxi restrictions apply to Code C aircraft and below pushed back from Terminal 1:
 - TWY B1 not available from Bays 15 to 27.
 - TWY B1 and L1 not available from Bays 22 to 27.
- k. TWY H and F1 restricted to MAX Code C ACFT.
- l. TWY R restricted to MAX 18M wingspan ACFT.
- m. ACFT landing RWY 05 first AVBL TWY is E2 unless otherwise advised by ATC.
- n. ACFT landing RWY 23 first AVBL TWY is D1 unless otherwise advised by ATC.
- o. ACFT operating greater than 400 tonnes on RWY 05/23 to seek pavement concession.

2. GENERAL AVIATION APRON

- a. Hardstand located on Terminal 2 APN via TWY A2: AVBL for local commercial operators, private and overnight itinerant ACFT. No tie-down points AVBL.
- b. Private and overnight parking must be approved by the Airside Operations Manager - Phone 08 8154 9444 or Fax 08 8308 9324.

3. TRAINING FLIGHTS

- a. All ACFT planning practice instrument APCH (AVBL 0700-2300 Local) RQ prior ATC approval. Pilots must book a slot online at www.bookawk.com.
- b. Training Flights involving an approach to the reciprocal end of the RWY nominated for departures are not permitted.
- c. Non-jet training ACFT carrying out a practice instrument approach should plan a missed approach or full stop landing. Touch and Go landings are not normally approved.
- d. PPR Shift Manager 1, Melbourne 03 9235 2012 for circling APCH at night or when VIS is less than 5,000M or ceiling is BLW A025.
- e. Circuit training is only permitted at Adelaide BTN 0700-2100 Local (extended to 2200 Local HDS). RQ prior ATC approval. Pilots must book a slot online at www.bookawk.com. Noise abatement preferred RWY and flight paths may be waived.

4. SURVEY, AWK (NON-TRAINING), COASTAL TRANSIT AND PARACHUTING FLIGHTS

- a. The following flights must book online via www.sa.bookawk.com. If access to the booking page is not AVBL contact the Shift Manager 1, Melbourne on 03 9235 2012 BTN 0630 and 1930 Local DLY;
 - (i) Survey and AWK (non-training) flights planning to operate in CTA WI 36 NM Adelaide;
 - (ii) ACFT planning to transit AD CTR via the coast. If transit is required in both directions as part of the one flight, two slots should be booked; and
 - (iii) Parachuting flights planning to drop WI Adelaide CTR.

- b. For survey flights, operators must email maps to: ml.sm1@airservicesaustralia.com and call Shift Manager 1, Melbourne on 03 9235 2012 to discuss their planned operations prior to becoming airborne each day.

5. IFR TRAINING AREAS

IFR ACFT requiring an area for training may plan to operate in:

- (i) The Vincent IFR Training Area (VITAA) - The lateral limits of the VITAA are AD 230R-AD260R, 20DME-36DME AD.
- (ii) The FALEE IFR Training Area (FALEE) - The lateral limits of the FALEE are AD 280R-AD310R 20DME-36DME AD.

6. HELICOPTER OPERATIONS

- a. HEL air taxi via lit TWY at night.
- b. Wherever possible, helicopters shall depart a HLS in the same direction as the duty runway nominated on the ATIS, advising direction of take off with the taxi call e.g. "(CS) Request taxi, Departure South West".
- c. Subject to traffic, weather and priority considerations, helicopters shall adhere to the following departure and arrival routes:
 - (i) NW - via University playing fields and River Torrens outlet
 - (ii) SW - via Sea Rescue Squadron or Sewerage Treatment Works
 - (iii) N - over Kooyonga Golf Course
 - (iv) E - via Richmond Road and Keswick railway bridge
 - (v) S - via Glenelg Golf Course
- d. During HN, ATC and pilots will endeavour to confine as much noise as possible within the boundary of the aerodrome by ensuring helicopters depart and arrive overhead the Control Tower.

7. HELICOPTER TRAINING

- a. During daylight hours and in VMC, helicopter AWK will take place from the training sites adjacent to and parallel with RWY 12/30 and 23/05, known respectively as the Western and Southern training areas.
- b. NVIS equipped helicopters may operate from these areas HN in VMC.

FLIGHT PROCEDURES

1. ATC TRAFFIC MANAGEMENT SPEED

When **not** on a SID or STAR (including vectoring) - ACFT ARR or DEP YPAD must not exceed 250KT IAS when BLW 10,000FT. Advise ATC if a higher speed is operationally required.

2. ESTIMATED TRAFFIC DELAYS

- 2.1. Estimated airborne traffic delays for ARR ACFT may be expected due to terminal area traffic density.

- a. Scheduled:
 - (i) MON-FRI 0000-0130 UTC and 0700-1000 UTC: 10MIN.
- b. Non-scheduled/other:
 - (i) MON-FRI 2200-0300 UTC: 10MIN.
 - (ii) MON-FRI 0700-1100 UTC: 15MIN.

Note: All times 1HR earlier during HDS. Actual holding times may differ from holding estimates. Historical data on actual holding is available from the NOMC.

3. VFR HJ: Do not plan to transit or over-fly the Adelaide CTR below 6,000FT where an alternate route is available. Where an alternative route is not available, plan:

- a. Coastal FM OHB to PNL or
- b. Coastal PNL to OHB or
- c. Hope Valley VFR ROUTE.

4. VFR HJ: Departures from Adelaide to Parafield, AWK training flights plan via OHB. Other ACFT plan via PAL.

5. LOW VIS TAKEOFFS

For CASA approved operators, RWY 23/05 are capable of supporting takeoffs with an RV/RWY VIS of not less than 550M.

NOISE ABATEMENT PROCEDURES

CURFEW applies - See AIP DAP Noise Abatement Procedures.

ADDITIONAL INFORMATION

1. The Pelican Point Power Station near the container terminal to the NW of Torrens Island emits a continuous plume of high temperature and high velocity gas discharges. Remain clear at all times.
2. Bird hazard exists. Pigeon flocks concentrate on RWY 23 and RWY 30 approaches. Pelican activity on RWY 05 approach.
3. Weather balloon launches APRX 2315 and 1115 UTC. Launches may occur at other times.
4. Model ACFT OPR HJ WI 160M radius of PSN 345618S 1383554E, BRG 075 DEG MAG 3.3NM FM ARP, SFC to 400FT AGL.

CHARTS RELATED TO THE AERODROME

1. WAC 3458, 3459.
 2. Aerodrome Obstacle Chart Type A: December 2024 AVBL from AD OPR.
 3. Also refer to AIP Departure and Approach Procedures.
-