

## MILDURA

**ELEV 167**

**AVFAX CODE 3026**

VIC

UTC +10

YMIA

341345S

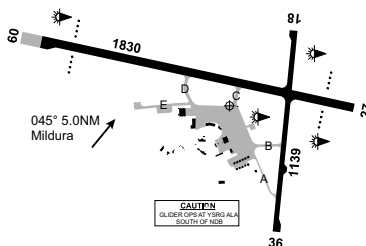
1420508E

VAR 9 DEG E

CERT

AD OPR Mildura Airport Pty Ltd, PO Box SM356, Mildura South, VIC, 3501.

PH AD OPS 03 5055 0500: 0428 596 871. Fax 5021 5740.



## REMARKS

1. AD Charges: aircraft landing and parking charges may apply, refer to AD website terms of use.
2. This AD is a Security Controlled Airport. A valid ASIC is to be displayed at all times while airside.
3. TWY E PPR. 15 MIN PN RQ to AD OPR. CTC by phone or CTAF.

## HANDLING SERVICES AND FACILITIES

World Fuel Services (WFS): JET A1 and AVGAS tanker refueller and 24HR AVGAS carnet and cardswipe bowser WFS cardswipe or V and MC via smartphone APP.

Attended 0530-1500 Local MON-FRI and 1300-1700 Local SAT/SUN. Call-out fee may apply AH.

Phone: 0409 736 530 Email: mildurawfs@gmail.com.

## PASSENGER FACILITIES

PT/TX/HC/LG/RF (Kiosk Phone 03 5021 4904)/WC.

## APRONS AND TAXIWAYS

1. Two TWY leading to S end of RWY 18/36 not AVBL to ACFT ABV 5,700KG MTOW.
2. TWY E not AVBL to ACFT with wingspan greater than 17.5M.

## AERODROME OBSTACLES

1. Tower BRG 122 DEG MAG 1,500M FM ARP, 264FT AMSL.
2. LGT BRG 247 DEG MAG 249M FM ARP. Infringes transitional SFC by 10FT.
3. COM TWR BRG 223 DEG MAG 391M FM ARP. Infringes transitional SFC by 6FT.
4. APN LGT:
  - a. BRG 229 DEG MAG 219M FM ARP. Infringes transitional SFC by 16FT.
  - b. BRG 212 DEG MAG 170M FM ARP. Infringes transitional SFC by 19FT.
  - c. BRG 193 DEG MAG 147M FM ARP. Infringes transitional SFC by 19FT.
  - d. BRG 178 DEG MAG 180M FM ARP. Infringes transitional SFC by 19FT.
  - e. BRG 167 DEG MAG 197M FM ARP. Infringes transitional SFC by 10FT.
5. Trees:
  - a. BRG 068 DEG MAG 894M FM ARP. Infringes transitional SFC by 10FT.
  - b. BRG 067 DEG MAG 924M FM ARP. Infringes transitional SFC by 5FT.
  - c. Two trees grouped 184FT AMSL BRG 078 MAG 1,021M FM ARP.
6. Illuminated WDI 198FT AMSL BRG 126 DEG MAG 162M FM ARP. Infringes transitional SFC by 16FT.

**METEOROLOGICAL INFORMATION PROVIDED**

1. TAF CAT B, METAR/SPECI.
2. AWIS Phone 03 8470 3215 - Report faults to BoM.
3. AWIS FREQ 128.675 (requires three one-second pulses to activate) - Report faults to AD OPR.

**PHYSICAL CHARACTERISTICS**

|       |     |     |                                |        |         |
|-------|-----|-----|--------------------------------|--------|---------|
| 09/27 | 092 | 60a | PCR 200/F/C/1.57 MPa/T Grooved | WID 45 | RWS 300 |
| 18/36 | 176 | 37a | PCR 61/F/C/0.75 MPa/U          | WID 30 | RWS 90  |

**AERODROME AND APPROACH LIGHTING**

|           |         |              |             |               |
|-----------|---------|--------------|-------------|---------------|
| RWY 09/27 | LIRL(1) | PAL+AA 119.6 |             | SDBY PWR AVBL |
| RWY 09    | PAPI(1) | PAL+AA 119.6 | 3.0 DEG53FT | SDBY PWR AVBL |
| RWY 27    | PAPI(1) | PAL+AA 119.6 | 3.0 DEG48FT | SDBY PWR AVBL |
| RWY 18/36 | LIRL(1) | PAL+AA 119.6 |             | SDBY PWR AVBL |

(1) PAL+AA requires three pulses of APRX one second duration WI five seconds to ACT.

RWY edge light spacing:

- RWY 09/27 - 60M;
- RWY 18/36 - 80M.

**OTHER LIGHTING**

- Secondary PWR switchover time: 15 SEC.
- TWY LGT: Blue edge, TWY C and D only.

**ATS AND AERODROME COMMUNICATION FACILITIES**

|     |                  |                 |
|-----|------------------|-----------------|
| FIA | MELBOURNE CENTRE | 122.1 On Ground |
|-----|------------------|-----------------|

**RADIO NAVIGATION AND LANDING AIDS**

|     |     |               |           |            |                       |
|-----|-----|---------------|-----------|------------|-----------------------|
| DME | IMI | 110.9/ 46X    | 341341.7S | 1420437.1E | (4)                   |
|     |     | (RWY09)       |           |            |                       |
| GP  | IMI | 330.8 (RWY09) | 341341.7S | 1420437.1E |                       |
| ILS | IMI | 110.9 (RWY09) | 341349.1S | 1420548.2E | (3)                   |
| LOC | IMI | 110.9 (RWY09) | 341349.1S | 1420548.2E |                       |
| DME | MIA | 113.7/ 84X    | 341330.2S | 1420438.3E | (1)                   |
| NDB | MIA | 272           | 341452.1S | 1420426.1E | Range 100 (HN 85) (2) |
| VOR | MIA | 113.7         | 341330.7S | 1420438.2E |                       |

(1) Antenna ELEV 186FT.

(2) 024/1.2 to ARP.

(3) Private ILS - Fees apply - Operated by AD OPR.

(4) Antenna ELEV 189FT.

**LOCAL TRAFFIC REGULATIONS**

- Very limited PRKG for ACFT ABV 5,700KG MTOW. Contact AD OPR for parking.
- Additional grassed parking with tie-down facility available for ACFT below 5,700KG adjacent to TWY A and B entrance via TWY A.
- ACFT are not directly visible to each other on THR RWY 09, THR RWY 27 and THR RWY 36. Mandatory rolling call required from all ACFT immediately prior to take-off due increased risk of ACFT not being aware of each other.
- ACFT LDG RWY 18/36 at night - taxi via RWY 09/27 and use TWY C or D.

**FLIGHT PROCEDURES**

Right hand circuits RWY 27 and 36.

**CTAF - AFRU 118.8**

**ADDITIONAL INFORMATION**

- Birds may be present on SFC and approaches to RWYs.
- Caution: training airfield. Multiple RWY may be in use with significant TFC within circuit at any time.
- Caution: frequent movements of high capacity RPT ACFT occur at AD.
- Gliding OPS HJ JF and NOTAM from grass airstrip 2NM SSW of AD. Wire launching. Gliders monitor CTAF.

**CHARTS RELATED TO THE AERODROME**

- WAC 3458.
- Also refer to AIP Departure and Approach Procedures.