

ALBURY**ELEV 539****AVFAX CODE 2234**

NSW

UTC +10

YMAY

360404S

1465729E

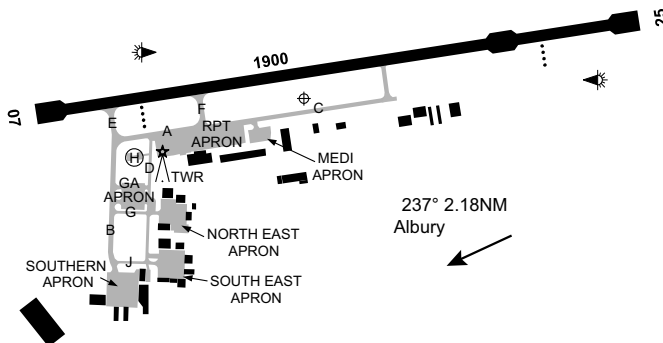
VAR 12 DEG E

CERT

AD OPR Albury City Council, PO Box 323, Albury, NSW, 2640. Email:

airport@alburycity.nsw.gov.au. PH Manager 02 6023 8111. ARO 0418 691 776: 0428 691 801.

Website: www.alburycity.nsw.gov.au.

**REMARKS**

1. AD Charges: refer to website.
2. This AD is a Security Controlled Airport. All pilots and operators must possess and display a current Aviation Security Identification Card (ASIC) when airside, and wear a high visibility safety vest while on APN area.

HANDLING SERVICES AND FACILITIES

Aero Refuellers: AVGAS, 24HR self-serve bowser accepts Aero Refuellers card, V and MC. AVGAS and JET A1 by tanker H24 with 1HR PN. AH call-out fees may apply. PH: 0413 003 808.

World Fuel Services: JET A1 Tanker Refueller, AVGAS Tanker Refueller, H24 AVGAS bowser, WFS carnet card, V and MC via Compac Pay smartphone APP.

Attended 0800-1700 Local MON-FRI and 0800-1200 Local SAT/SUN. 24HR Duty Refueller 0428 567 599, Email: alburyaviationfuels@gmail.com.

Sureflight Aviation Services - Full FBO services and lounge amenities to CIVIL and MIL ACFT up to 5,700KG 2200-0600 UTC MON-FRI, 1 HR earlier HDS. AH and ACFT up to 50,000KG approval required FM AD OPR with 6HR PN. Parking, short-term hangarage, catering, cleaning, courtesy car, direct and airside vehicle access/escort AVBL. Email: contact@sureflight.com.au or PH: 1300 239 252, located NE APN.

24HR pilot's lounge, located adjacent to the GA parking. Sponsored by the Albury Aero Club. Gavin 0418 399 331.

AERODROME OBSTACLES

1. Mast on building BRG 037 DEG MAG 464M FM ARP. Infringes TNS by 4.9FT.
2. Anemometer BRG 242 DEG MAG 650M FM ARP. Infringes TNS by 0.6FT.
3. Lit towers
 - a. 200FT AMSL BRG 010 DEG MAG 1,590M FM ARP.
 - b. 953FT AMSL BRG 204 DEG MAG 2,870M FM ARP.
 - c. 953FT AMSL BRG 214 DEG MAG 2,490M FM ARP.
 - d. 3 x TWR 1,713FT AMSL BRG 351 DEG MAG 5,300M FM ARP.
4. Lit poles
 - a. 738FT AMSL BRG 050 DEG MAG 2,740M FM ARP.
 - b. 1,250FT AMSL BRG 083 DEG MAG 8,160M FM ARP.
 - c. 1,470FT AMSL BRG 190 DEG MAG 7,500M FM ARP.
 - d. 1,031FT AMSL BRG 251 DEG MAG 5,180M FM ARP.
 - e. 1,031FT AMSL BRG 256 DEG MAG 5,100M FM ARP.
 - f. 1,031FT AMSL BRG 261 DEG MAG 5,000M FM ARP.

5.

The following obstacle penetrates the VSS

a. Hazard light 1,076FT AMSL BRG 262 DEG MAG 4,995M FM ARP.
6.

The following trees penetrate the VSS

a. 1,004FT AMSL BRG 258 DEG MAG 4,957M FM ARP.

b. 594FT AMSL BRG 260 DEG MAG 1,405M FM ARP.

c. 593FT AMSL BRG 060 DEG MAG 1,526M FM ARP.

d. 739FT AMSL BRG 057 DEG MAG 2,759M FM ARP.

e. 587FT AMSL BRG 059 DEG MAG 1,478M FM ARP.

f. 590FT AMSL BRG 060 DEG MAG 1,569M FM ARP.

g. 597FT AMSL BRG 072 DEG MAG 1,728M FM ARP.
7.

Terrain BRG 062 DEG MAG 2,518M FM ARP. Infringes 2% TKOF by 16FT.
8.

Light pole BRG 061 DEG MAG 1,616M FM ARP. Infringes 2% TKOF by 8.2FT.
9.

Building BRG 055 DEG MAG 1,078M FM ARP. Infringes TNS by 3.9FT.
10.

War Memorial BRG 244 DEG MAG 5,197M FM ARP. Infringes 2% TKOF by 64.6FT.
11.

Chimney BRG 259 DEG MAG 1,431M FM ARP. Infringes 2% TKOF by 9.8FT.
12.

Power poles:

a. BRG 252 DEG MAG 1,431M FM ARP. Infringes 2% TKOF by 2.3FT.

b. BRG 248 DEG MAG 1,514M FM ARP. Infringes 2% TKOF by 4.3FT

c. BRG 247 DEG MAG 1,473M FM ARP. Infringes 2% TKOF by 2.6FT.

d. BRG 253 DEG MAG 1,456M FM ARP. Infringes 2% TKOF by 1FT.
13.

Vent on building BRG 260 DEG MAG 1,126M FM ARP. Infringes 2% TKOF by 10.2FT.
14.

Security camera BRG 253 DEG MAG 1,252M FM ARP. Infringes 2% TKOF by 1FT.
15.

Steel post BRG 250 DEG MAG 1,051M FM ARP. Infringes 2% TKOF by 1FT.

METEOROLOGICAL INFORMATION PROVIDED

1. TAF CAT B, METAR/SPECI.
2. AWIS PH 02 9353 6400 - Report faults to BoM.
3. AWIS FREQ 134.525 (requires one-second pulse to activate) - Report faults to AD OPR.

PHYSICAL CHARACTERISTICS

07/2506962aPCN 29/F/C/1.40 MPa/T GroovedWID 30RWS 150

Turn pads each end and 400M from RWY 25 THR, 45M WID.

AERODROME AND APPROACH LIGHTING

RWY 07/25	MIRL	AFRU+PAL 123.25		SDBY PWR AVBL
RWY 07/25	RTIL	AFRU+PAL 123.25		SDBY PWR AVBL
RWY 07	PAPI(1)	AFRU+PAL 123.25	3.0 DEG51.6FT	SDBY PWR AVBL
RWY 25	PAPI(2)	AFRU+PAL 123.25	3.0 DEG51.4FT	SDBY PWR AVBL

- (1) Right side.
- (2) Left side. PAPI RWY 25 not to be used beyond 3NM FM AD when R368 ACT (SFC-2200).
1. RWY edge light spacing: 07/25: 60M.
2. AFRU+PAL AVBL outside TWR HR.
3. RWY 07/25: Outside TWR HR PAPI Stage 2 MAN or PAL, SDBY PWR AVBL supplied by AD generator in the event of mains PWR failure.

OTHER LIGHTING

- ABN OCC 6 W
1. SDBY PWR switchover time: 1 SEC during LVO up to 15 SEC OT.
2. No RWY centreline lights are provided.
3. TWY LGT: Blue edge on TWY A, B, C, E, F and J. Blue reflective edge on TWY D.
4. PTBL battery operated EMERG lighting AH Phone 0418 691 776, 0428 691 801.

ATS AND AERODROME COMMUNICATION FACILITIES

FIA	MELBOURNE CENTRE	125.2 On ground (outside TWR HR)
ATIS	ALBURY ATIS	115.6 133.85
SMC	ALBURY GROUND	121.8
TWR	ALBURY TOWER	123.25

1. TWR HR:

- MON-FRI: 2015-1030 UTC.
- SAT: 2300-0700 UTC.
- SUN: 2300-1030 UTC.

Phone 02 6020 7101^.

Note: All times 1HR earlier during HDS. TWR HR may change at short notice, check status of airspace with ATS or Albury ATIS.

- Albury TWR provides combined TWR and APP CTL services within Class D airspace, 4,500FT AMSL and BLW DRG TWR HR. CTC TWR for clearance.
- Outside TWR HR, Albury Class C and D airspace 8,500FT AMSL and BLW becomes Class G.

RADIO NAVIGATION AND LANDING AIDS

DME	AY	115.6/103X	360405.2S	1465758.3E	(2)
VOR	AY	115.6	360404.8S	1465757.9E	(1)
(1)	259/0.4 to ARP				
(2)	Antenna ELEV 545FT.				

LOCAL TRAFFIC REGULATIONS

- RWY grass strips not MNTN for ACFT OPS.
- TWY A, B, C, E, F and J AVBL to ACFT ABV 5,700KG.
- TWY D and G not AVBL to ACFT ABV 5,700KG.
- TWY D not AVBL to ACFT with wingspan greater than 15M.
- Intersection DEP RWY 07 permitted FM TWY E, refer to RDS.
- All ACFT ABV 5,700KG must only conduct 180 DEG turns at RWY 07/25 threshold or turning nodes.
- Training circuits not permitted MON-SUN 1100-2100 UTC (1HR earlier HDS).
- Instrument approach training**
All ACFT planning practice instrument APCH during TWR HRS require prior ATC approval. Pilots must book a slot online at www.nsw.bookawk.com.

FLIGHT PROCEDURES

1. LOW VISIBILITY OPERATIONS

- LVO AVBL during TWR HR
 - RV assessment measurements AVBL.
 - Preparations for the activation of LVP are commenced when the visibility has reduced to 1,500M or less, and/or cloud ceiling is 200FT or less and further reducing. This ensures that the LVP are in force at or just prior to the visibility reducing to 800M.
 - When visibility is less than 800M, ATC will limit vehicle access on the manoeuvring area to the Airport Operations Officer and RFFS/other EMERG vehicles.
 - Aircraft OPS in VIS less than 800M when ATC is not operating by prior arrangement only, contact aerodrome operator.
 - Low VIS DEP on RWY 07/25 not AVBL BLW 550M VIS.
- Right hand circuits RQ when OPR RWY 07, except as directed by ATC.
 - Simulation of ENG failure after TKOF RWY 25 must only be initiated:
 - In HJ only
 - Not BLW 1,500FT AMSL

CTAF - AFRU 123.25

Outside TWR HR.

ADDITIONAL INFORMATION

- Wildlife hazard exists. Most common species: bats, ducks, galahs and ibis.
- Model ACFT OPR HJ WI 500M RAD Ettamogah BRG 355 MAG 3.85NM FM AD up to 400FT AGL.
- Caution - sections of TWY C not fully visible to the control tower.

CHARTS RELATED TO THE AERODROME

1. WAC 3470.
 2. Also refer to AIP Departure and Approach Procedures.
 3. Aerodrome Obstruction Chart Type A: RWY 07/25, Edition 2, SEP 2015.
-