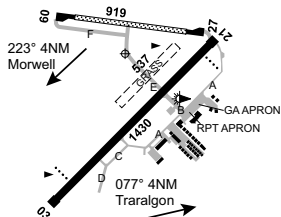


LATROBE VALLEY**ELEV 180****AVFAX CODE 3050**

VIC 381226S 1462813E UTC +10 YLTV
 VAR 12 DEG E CERT
 AD OPR Latrobe Airport Community Asset Committee, PO Box 264, Morwell, VIC, 3840. PH 03 5128 5777: 0409 436 287. ARO 0408 038 285. Fax 03 5128 5672. Website: www.latrobe.vic.gov.au.

REMARKS

1. PPR for parking non-RPT ACFT ABV 5,700KG on sealed apron.
2. Helicopter Ambulance OPS H24.
3. AD fees apply. Refer to website- Airport Operations.

HANDLING SERVICES AND FACILITIES

Aerofuels - Latrobe Valley Aero Club: manned 2200-0730 UTC; AVBL H24. PH 03 5174 2591, 0408 038 285. AVGAS H24 card swipe bowser, V or MC. JET A1 bowser and tanker, 60 MIN PN, call out fees apply.

IOR Aviation Pty Ltd - JET A1, AVGAS 100LL and AVPULP H24 self-service bowser. Payment via aviation tag for account holders or via the Fuelcharge APP, PH 1300 457 467.

APRONS AND TAXIWAYS

1. ACFT ABV 5,700KG may only use central sealed TWY.
2. A 21.4M wingspan limit applies for ACFT using main apron parking position guideline when ACFT are parked on the GA apron parking positions adjoining the main apron. Pilots to exercise caution.
3. GA Apron PRKG not AVBL to ACFT ABV 12M wingspan.

AERODROME OBSTACLES

1. Lit TWR 470FT AMSL BRG 256 DEG MAG 4,375M FM ARP.
2. Chimneys:
 - a. 375FT AGL BRG 312 DEG MAG 3,322M FM ARP.
 - b. 374FT AGL BRG 315 DEG MAG 3,256M FM ARP.

METEOROLOGICAL INFORMATION PROVIDED

1. TAF CAT C, METAR/SPECI.
2. AWIS PH 03 8470 3211 - Report faults to BoM.
3. AWIS FREQ 128.2 - Report faults to AD OPR.

PHYSICAL CHARACTERISTICS

03/21	033	47a	PCN 9/F/D/0.99 MPa/T Sealed	WID 23	RWS 90
09/27	085	30c	5700 kg/0.45 MPa Gravel. 72(236) E end, 58(190) W end Sealed.	WID 18	RWS 90

AERODROME AND APPROACH LIGHTING

RWY 03/21	LIRL(1)	PAL 122.3	SDBY PWR AVBL
RWY 03/21	PAPI(2)	PAL 122.3	3.0 DEG32FT

(1) PAL requires three one-second pulses to activate.
 (2) Left side. PAL requires three one-second pulses to activate.
 RWY edge light spacing: 03/21: 60M.

OTHER LIGHTING

1. Secondary PWR switchover time: 5 SEC.
2. TWY LGT: Blue edge for centre TWY only.

ATS AND AERODROME COMMUNICATION FACILITIES

FIA	MELBOURNE CENTRE	124.0 On Ground
UNICOM	LATROBE VALLEY	126.0 (1)
	UNICOM	

- (1) 2300-0700 UTC DLY.

RADIO NAVIGATION AND LANDING AIDS

NDB	LTV	486	381209.1S	1462832.6E	Range 30 (HN 30)	(1)
-----	-----	-----	-----------	------------	------------------	-----

(1) Pilot monitored - Range 15NM in segments 120 - 190 and 300 - 010.

LOCAL TRAFFIC REGULATIONS

RWY 03/21: due RWY levels ACFT may not be sighted on opposite RWY ends.

FLIGHT PROCEDURES

1. Training flights conducting practice instrument approaches should add 1,000FT to all the ALT prescribed in the approach in order to reduce noise nuisance and interference with circuit traffic. Such flights should BCST their intentions including ALT limits of OPS when turning inbound. IMC flights should remain as high as practical when encountering VMC and join the circuit in the standard manner.
2. Night circuits not permitted - 1200-2000 UTC DLY (1HR earlier during HDS).
3. Grass RWY right hand CCTS when TKOF to south west.
4. Pilots are requested to avoid flying over, or in the vicinity of, power stations and other major industrial installations.

CTAF - AFRU 126.0

NOISE ABATEMENT PROCEDURES

Pilots are advised that the area BTN the AD and the highway to the S is particularly noise sensitive. Overflight should be avoided.

ADDITIONAL INFORMATION

1. Bird hazard exists.
2. Animal (kangaroos) hazard exists HN.
3. PJE OPS HJ JF overhead AD, limit midfield joins when PJE OPS in progress.

CHARTS RELATED TO THE AERODROME

1. WAC 3470.
 2. Also refer to AIP Departure and Approach Procedures.
-