

ESPERANCE**ELEV 471****AVFAX CODE 6302**

WA

UTC +8

YESP

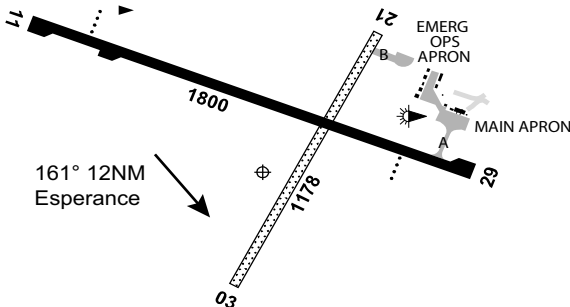
334104S

1214922E

VAR 0 DEG E

CERT

AD OPR Shire of Esperance, PO Box 507, Esperance, WA, 6450.

Email: airport@esperance.wa.gov.au. ARO 0428 935 618. Website: www.esperance.wa.gov.au.**REMARKS**

- AD Charges - refer website.
- This AD is a Security Controlled Airport. A valid ASIC is to be worn and properly displayed at all times while airside.

HANDLING SERVICES AND FACILITIES

AIR BP: 0000-0900 UTC MON-FRI, 0000-0200 UTC SAT, SUN and PH. JET A1 60MIN PN REQ. H24 AVGAS. AIR BP Carnet swipe bowser, 60MIN PN REQ for credit card and cash sales. Call-out fee applies outside normal HR. Mobile 0428 935 618.

Note: Phone calls only, SMS are not monitored.

AUSFLIGHT Ground Handling Services: Availability O/R. Mobile 0467 555 105.

Email: charterrepr@ausflighthandling.com.au.

PASSENGER FACILITIES

TX(08 9071 1782)/HC/LG/RF/WC.

AERODROME OBSTACLES

- Trees 506FT AMSL BTN BRG 103-105 DEG MAG 0.44-0.53NM FM ARP. Infringes TNS OLS RWY 11/29.
- Primary WDI 528FT AMSL BRG 071 DEG MAG 0.28NM FM ARP. Infringes TNS OLS by 1FT.
- Unlit masts:
 - 731FT AMSL BRG 004 DEG MAG 2.97NM FM ARP.
 - 596FT AMSL BRG 339 DEG MAG 2.35NM FM ARP.
 - 597FT AMSL BRG 340 DEG MAG 2.32NM FM ARP. Infringes Inner HZS by 2FT.
 - 600FT AMSL BRG 341 DEG MAG 2.37NM FM ARP. Infringes Inner HZS by 5FT.
 - 597FT AMSL BRG 339 DEG MAG 2.4NM FM ARP. Infringes Inner HZS by 2FT.
- Wind turbines (lit with red light at night, outer horizontal OLS):
 - 913FT AMSL BRG 166 DEG MAG 4.4NM FM ARP.
 - 913FT AMSL BRG 170 DEG MAG 4.1NM FM ARP.

METEOROLOGICAL INFORMATION PROVIDED

- TAF CAT C, METAR/SPECI.
- AWIS Phone 08 6216 2611 - Report faults to BoM.
- AWIS FREQ 123.05 - Report faults to AD OPR.

PHYSICAL CHARACTERISTICS

03/21 028 39c 5700 kg/0.55 MPa Gravel
11/29 111 59a PCR 212/F/C/X/T

WID 18 RWS 60
WID 30 RWS 150

AERODROME AND APPROACH LIGHTING

RWY 11/29	LIRL	PAL 121.3		SDBY PWR AVBL
RWY 11	PAPI(1)	PAL 121.3	3.0 DEG51FT	SDBY PWR AVBL
RWY 29	PAPI(1)	PAL 121.3	3.0 DEG45FT	SDBY PWR AVBL

(1) Left side only.

OTHER LIGHTING

- Secondary PWR switchover time: 10 SEC.
- TWY LGT: Blue edge.

ATS AND AERODROME COMMUNICATION FACILITIES

FIA MELBOURNE CENTRE 133.2 On Ground

RADIO NAVIGATION AND LANDING AIDS

DME	ESP	114.2/ 89X	334042.8S	1214918.1E		(1)
NDB	ESP	326	334113.1S	1214937.6E	Range 120 (HN 110)	
VOR	ESP	114.2	334050.1S	1214925.6E		

(1) Antenna ELEV 476FT.

LOCAL TRAFFIC REGULATIONS

- PRKG Bays 1, 1A, 2 and 3 are restricted to RPT ACFT or ACFT approved by ARO only.
- PRKG Bays 1, 1A, 2 and 3 are for ACFT greater than 5,700KG.
- PRKG Bays 1 and 1A cannot be used SIMUL.
- PRKG Bays for GA ACFT sealed pads E of main APN, tie-downs (not rated) provided.
- PRKG overflow for GA and helicopters grassed area E of main APN, tie-downs not provided.
- EMERG OPS APN restricted to EMERG OPS ACFT or ACFT approved by ARO only.
- CTC ARO with 24HR PN for alternative and temporary parking arrangements.
- TKOF and landing on grass strips not permitted.

CTAF - AFRU 126.7**CHARTS RELATED TO THE AERODROME**

- WAC 3461.
 - Also refer to AIP Departure and Approach Procedures.
-