

DEVONPORT**ELEV 33****AVFAX CODE 7003**

TAS

UTC +10

YDPO

411011S

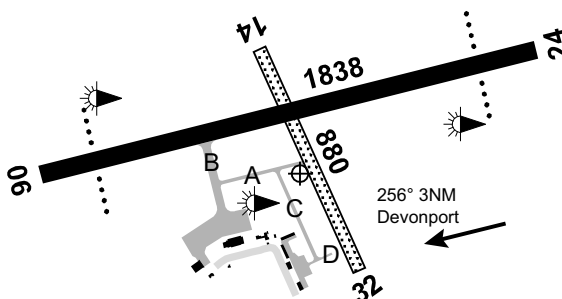
1462549E

VAR 14 DEG E

CERT

AD OPR Tasmanian Ports Corporation Pty Ltd, PO Box 478, Devonport, TAS, 7310.

PH +61 408 341 814.

**REMARKS**

1. AD Charges: All ACFT.
2. This AD is a Security Controlled Airport.
3. High-VIS reflective vest or approved equivalent Personal Protective Equipment (PPE) must be worn in all airside areas.
4. A clearly displayed and valid Australian Security Identification Card (ASIC) must be worn when airside.
5. Visiting aircrew must always maintain control of all PAX when airside.

HANDLING SERVICES AND FACILITIES

H24 AVGAS by Air BP Carnet Card Swipe Bowser.

AVTAS Fuels Pty Ltd: 0600-1800 Local DLY, AH call-out fee - 1HR PN. Mobile 0417 397 828 H24.

JET A1 (tanker) PN 30 MIN. Cash, MC and V.

World Fuel Services H24 overwing/underwing JET A1 bowser. WFS carnet card, V and MC credit card via Compac Pay smartphone APP. Phone 0417 397 828.

AERODROME OBSTACLES

1. Communications TWR 69FT AGL BRG 240 MAG 221M FM ARP fitted with red OBST LGT Infringes TNS by 30FT.
2. Wind indicators:
 - a. 30FT AGL BRG 275 MAG 720M FM ARP fitted with red OBST LGT Infringes TNS by 23FT.
 - b. 30FT AGL BRG 052 MAG 660M FM ARP fitted with red OBST LGT Infringes TNS by 29FT.
3. Vegetation:
 - a. BRG 261 MAG 1,312M FM ARP Infringes APCH SFC by APRX 12FT.
 - b. BRG 264 MAG 1,200M FM ARP Infringes APCH SFC by APRX 15FT.
 - c. BRG 251 MAG 1,590M FM ARP Infringes APCH SFC by APRX 1FT.
 - d. BRG 254 MAG 1,520M FM ARP Infringes APCH SFC by APRX 8FT.
 - e. BRG 267 MAG 1,060M FM ARP Infringes TNS SFC by APRX 1FT.
 - f. BRG 265 MAG 1,120M FM ARP Infringes TNS SFC by APRX 11FT.
 - g. BRG 270 MAG 1,000M FM ARP Infringes TNS SFC by APRX 5FT.
 - h. BRG 240 MAG 3,300M FM ARP Infringes APCH SFC by APRX 35FT.
 - i. BRG 070 MAG 4,300M FM ARP Infringes APCH SFC by APRX 60FT.
 - j. BRG 148 MAG 1,540M FM ARP Infringes APCH SFC by APRX 2FT.

METEOROLOGICAL INFORMATION PROVIDED

1. TAF CAT C, METAR/SPECI.
2. AWIS Phone 03 6283 8600 - Report faults to BoM.
3. AWIS FREQ 133.225 (requires one-second pulse to activate) - report faults to AD OPR.

PHYSICAL CHARACTERISTICS

06/24	062	60a	PCR 290/F/C/Y/U Grooved	WID 45	RWS 300
14/32	142	29c	Unrated. Grass	WID 30	RWS 90

AERODROME AND APPROACH LIGHTING

RWY 06/24	LIRL	AFRU+PAL 122.3	SDBY PWR AVBL
RWY 06/24	PAPI	AFRU+PAL 122.3	SDBY PWR AVBL
1.	RWY edge light spacing: 06/24: 60M.		
2.	For manual activation of lighting contact ARO 0408 341 814.		

OTHER LIGHTING

ABN	ALTN 8 WG	
HBN	OCC R	2 lights on RWY 24 approach.
1.	SDBY PWR switchover time: 20 SEC.	
2.	TWY LGT: Blue edge.	

ATS AND AERODROME COMMUNICATION FACILITIES

FIA	MELBOURNE CENTRE	120.7 On Ground
-----	------------------	-----------------

LOCAL TRAFFIC REGULATIONS

1. Apron bays 1, 2 and 3 not AVBL to non-RPT ACFT without prior approval from AD OPR.
2. RWY 06/24 turning restrictions: Pilots to use full RWY width when turning (no sharp turns).
3. HEL TKOF and LDG to and from RWY only.
4. Rotary ACFT must taxi to GA parking area. Emergency Services HEL are exempt.
5. All ACFT must make radio calls when in the circuit/CTAF area.
6. The GA APN is a shared fixed wing and rotary wing facility.
7. The grass/natural SFC area in front of the Sureflight hangar is AVBL for HEL parking. Use is entirely at ACFT PIC discretion. The AD OPR accepts no responsibility for OPS conducted on grass/natural SFC.

FLIGHT PROCEDURES

1. Right hand circuits RQ when OPR on RWY 24.
2. Landing RWY 14/32 limited to ACFT not ABV 5,700KG by day in VMC.

CTAF - AFRU 126.9

VHF COM between aircraft on ground Devonport & Wynyard may not be AVBL.
Note: Due to communication difficulty between Devonport and Wynyard for ACFT on GND, pilots are encouraged to make calls airborne and/or on departure, as appropriate, on the CTAF to enhance self help TFC INFO.

ADDITIONAL INFORMATION

Bird and animal hazard may exist.

CHARTS RELATED TO THE AERODROME

1. WAC 3556.
2. Also refer to AIP Departure and Approach Procedures.