

Oakey**ELEV 1336****AVFAX CODE 4007**

QLD

UTC +10

YBOK

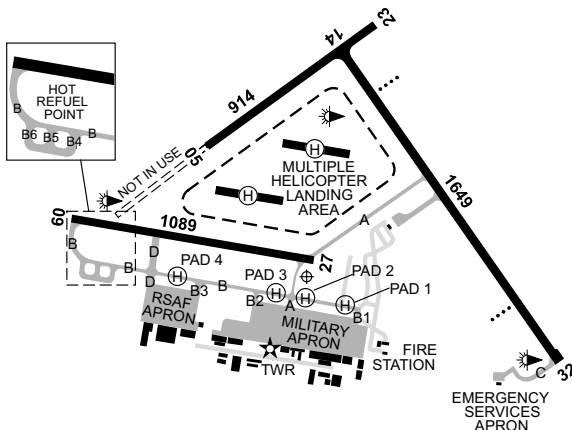
272441S

1514407E

VAR 11 DEG E

MIL

AD OPR Dept of Defence, Airfield Operations Centre, Army Aviation Training Centre (AAvnTC), Swartz Barracks, Oakey, QLD, 4401. Email: oak.airfieldops@defence.gov.au. PH 07 4577 7136. PH AH 0427 725 658.

**REMARKS**

- AD OPR HR are dependent on local MIL OPS and are notified by NOTAM.
- CIV ACFT must not use any surface of Oakey Airfield without prior approval, excluding MEDEVAC, HOSP and EMERG. Contact AD OPR.
- CIV ACFT (excluding EMERG ACFT) shall not plan to use Oakey as a WX Diversion.

HANDLING SERVICES AND FACILITIES

All visiting CIV and MIL aircrew are to notify AD OPR with 2 business days' PN to coordinate ACFT PRKG, security, refuelling, accommodation and in-flight meal requirements.

RESCUE AND FIREFIGHTING SERVICES

CAT 4 ATS hours.

APRONS AND TAXIWAYS

- TWY A PCR 50/D.
- TWY C, EMERG Services APN and MRH-90 facilities PCR 80/D.
- TWY D PCR 100/D.
- Compass swing area PCR 90/D.
- RSAP APN and Military APN PCR 100/D.
- TWY B varies:
 - TWY B east of TWY A PCR 50/D.
 - TWY B1 PCR 50/D.
 - TWY B west of TWY A PCR 100/D.
 - TWY B2, B3 and Hot Refuel Point (B4, B5, B6) PCR 100/D.
- Access to MIL APN W of CL invert B2 is restricted to ARH Tiger helicopter movements only.
- EMERG Service APN: Jet OPS or turbo-prop OPS in excess of 7,000KG are prohibited at Oakey unless due to EMERG, or special Government arrangement.
- Taxi line markings on the EMERG Services APN only ensures obstacle clearance for ACFT with a wing span of 10M or less.

AERODROME OBSTACLES

- Lit OBST 60FT AGL Turkey Hill, PSN 355 MAG 5NM Oakey.
- Lit OBST 75FT AGL, Oakey Hill, 191/2.5NM (4,600M) FM Oakey ARP.
- Lit OBST 1,831FT AMSL, TEL TWR, PSN 272759.25S 1514907.96E.

METEOROLOGICAL INFORMATION PROVIDED

1. TAF CAT B, METAR/SPECI, TAF3 issued hourly AVBL during MO HRS, AD WRNG, WS WRNG.
2. AWIS PH 07 3564 3731 - Report faults to AD OPR.
3. MET INFO AVBL FM Airservices Pilot Briefing. Elaborative briefing FM Defence MO 07 3239 8745 when staffed. AH AVBL FM MWO 07 3239 8737.

PHYSICAL CHARACTERISTICS

05/23	044	30a	PCR 80/F/D/1.10 MPa/T	WID 23	RWS 90
09/27	089	36a	PCR 100/F/D/X/T	WID 23	RWS 90
14/32	134	56a	PCR 90/F/D/1.10 MPa/T	WID 30	RWS 90

RWY 09/27 friction LVL measured BLW 'MNM friction LVL'.

AERODROME AND APPROACH LIGHTING

RWY 09/27	MIRL	PAL 121.3	SDBY PWR AVBL
RWY 14/32	MIRL	PAL 121.3	SDBY PWR AVBL
RWY 14/32	PAPI(1)	PAL 121.3	SDBY PWR AVBL

(1) Left side. 3.0 DEG48FT

OTHER LIGHTING

ABN ALTN 8 WG On TWR
LGT signal ALDIS LGT FM old control TWR visibility restricted from WNW (BTN 260 to 305 DEG MAG) due to new taller TWR construction.

ATS AND AERODROME COMMUNICATION FACILITIES

FIA	BRISBANE CENTRE	121.2 On ground (Outside APP/TWR HR)
ACD	Oakey DELIVERY	133.35
APP	Oakey APPROACH	123.7 125.4 285.4
ATIS	Oakey ATIS	124.3 254
SMC	Oakey GROUND	121.9 243.0 (1)
TWR	Oakey TOWER	120.1 279.5

(1) Emergency Frequency, guarded DUR ATS HR.

1. Automatic retransmit FAC exists BTN FLW FREQ DRG ATS HR only: 120.1/279.5; 125.4/285.4.
2. Oakey airspace activation must be confirmed by monitoring Oakey ATIS on 124.3 or 254 or 07 4577 7235 or with Brisbane Centre on 121.2.

RADIO NAVIGATION AND LANDING AIDS

DME	IOK	110.5/ 42X	272414.5S	1514424.5E	(4)
		(RWY14)			
GP	IOK	329.6 (RWY14)	272414.5S	1514424.5E	
ILS	IOK	110.5 (RWY14)	272459.3S	1514452.5E	
LOC	IOK	110.5 (RWY14)	272459.3S	1514452.5E	
DME	OK	112.9/ 76X	272358.5S	1514416.8E	(2)
NDB	OK	254	272516.9S	1514413.8E	(3)
VOR	OK	112.9	272358.8S	1514416.3E	(1)

(1) 169/0.7 to ARP.
(2) Antenna ELEV 1,358FT.
(3) 351/0.6 to ARP. Range 50NM in minor arc 330DEG MAG to 100DEG MAG.
(4) Antenna ELEV 1,357FT.

LOCAL TRAFFIC REGULATIONS

RWY 09/27 not AVBL to ACFT ABV 22,700KG.

FLIGHT PROCEDURES

1. During hours of de-activation of the CTR, all OPS are to be away FM the built-up area where possible.
2. All VFR ACFT RQ CLR into Oakey RSTD airspace from class G and E airspace. CTC Oakey ACD on 133.35 to pass details and obtain SSR code and AWY CLR.
3. Circling area may be overflown by ACFT conducting APCH to Brisbane West Wellcamp (YBWW) RWY 12 outside ATC HR.
4. Clearance through R654A may not be available on the YTWB/BIVAT-MESD-Q484 or Q303 routes. VFR clearances AVBL via the Warrego VFR route.

5. **OPERATIONS IN YBOK CTA AND/OR R654AB**
 - a. Requests must be sent to AD OPR via email, with proposed operation details, timings, locations and operating levels at least two business days prior to the commencement of the activity.
 - b. To prevent delays airborne and/or wastage of agricultural product, acknowledged agricultural operators should contact OAK ATC via phone prior to taking off to confirm any potential delays.
 - c. All ACFT are to maintain two-way communication with ATS when airspace is active. Transponder required.
 - d. MIL aircrew must receive Non-Defence owned Training Area brief prior to commencement of operations.
6. **CIV RPAS/UAS**
 - a. Requests must be sent to YBOK ATC via email: 452sqnoakflt.sprv@defence.gov.au with timings, locations, operating levels and whether within or beyond visual line of sight at least two business days prior to commencement.
 - b. Approval for RPAS/UAS operations may take longer than two days in some cases. All CIV RPAS/UAS operators must hold the appropriate certifications endorsed by CASA.
7. **ATC SERVICES**
 - a. ATC will provide Class D service to state ACFT and nominated civil ACFT WI R654ABCD and the Oakey CTR.
 - b. All other ACFT will receive Class C service.

CTAF - AFRU 127.65

Oakey, Toowoomba and Brisbane West Wellcamp excluding Oakey when airspace is active.

ADDITIONAL INFORMATION

1. Bird hazard exists. Increased activity will be advised by NOTAM.
2. Blasting Acland Mine, in VCY of PSN 271749S 1514301E (338/6.6NM FM OK VOR). Check NOTAM for activity.
3. Civil ACFT not intending to arrive at Oakey are strongly advised to avoid Oakey circuit area by 5NM, overfly above 3,500FT AMSL and avoid instrument approach final paths.
4. CAUTION:
 - a. Military helicopters and fixed wing ACFT OPR outside hours of ATS. OPS include parallel OPR to all RWY, counter rotating circuit patterns, medium wake turbulence category helicopter ARR DEP and circuit to sealed runways and other non-standard CTAF OPR
 - b. ACFT to be aware of the proximity to Brisbane West Wellcamp (YBWW) 150/9.3NM and Toowoomba (YTWB) 119/12.2NM FM Oakey ARP.
 - c. Airfield sweeper OPR. 1400-2100 MON-FRI.
 - d. Remain clear of power station to the SW of AD.
 - e. Flight Training OPS out of Brisbane West Wellcamp (YBWW) and within D635AB FM 1900-1400 UTC DLY. YBWW BRG 143 MAG 9.5NM FM ARP.
5. MIL ACFT using light enhancement devices may not display external LGT outside ATS/AD OPR HR. Check NOTAM for operations in R654 during periods of airspace deactivation.
6. Military radar is in operation at PSN 271942S 1514417E.
 - a. Possible avionics interruptions/errors WI 125M BLW 2,000FT AMSL
 - b. Aircraft transporting MIL ordnance are to observe the FLW separation FM the radar site unless ordnance manufacturers specify shorter distance.
 - (i) Hazards of Electromagnetic Radiation to Ordnance (HERO) susceptible WI 250M/BLW 850FT AMSL
 - (ii) HERO unsafe WI 900M/BLW 850FT AMSL

CHARTS RELATED TO THE AERODROME

1. WAC 3340.
2. MIL Aerodrome Obstruction Chart Type A (RWY 05/23): SEP 2024.
3. MIL Aerodrome Obstruction Chart Type A (RWY 09/27): SEP 2024.
4. MIL Aerodrome Obstruction Chart Type A (RWY14/32): SEP 2024.
5. Refer to AIP Departure and Approach Procedures.