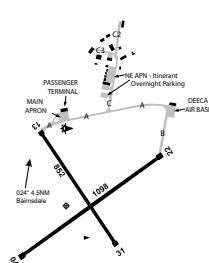


ELEV 165

VIC UTC +10 YBNS
375315S 1473404E VAR 13 DEG E CERT
AD OPR East Gippsland Shire Council, PO Box 1618, Bairnsdale, VIC,
3875. ARO 0447 132 980: Back Up 0438 497 697. Website:
www.eastgippsland.vic.gov.au/building-and-development/aerodromes.



CTC ARO for pin coded gate

- FM APN to terminal; and
- FM secondary APN to landside.

H24 World Fuel Services AVGAS and JET A1 self-service bowsters. WFS carnet card, V and MC via Compac smartphone APP. PH: 0448 505 577. CCTV monitoring fuel facility.

AC/RF/WC/LG (H24 CCTV). TX/HC not readily AVBL. CTC details on LG notice board.

1. TAF CAT C, METAR/SPECI.
2. AWIS PH 03 8470 3201 - Report faults to BoM.
3. AWIS FREQ 133.725 (Requires one-second pulse to activate). AWIS will transmit for 90 SEC - Report faults to AD OPR.

04/22	042	36a	PCN 11/F/B/0.56 MPa/T Sealed	WID 18	RWS 90
13/31	132	28a	PCN 11/F/B/0.55 MPa/T Sealed	WID 18	RWS 80

RWY 04/22 LIRL PAL+AA 123.9 SDBY PWR AVBL
RWY 04/22 edge light spacing: 60M.

1. SDBY PWR switchover time: 5 SEC.
2. TWY LGT: Blue edge. Activation by PAL 123.9.
3. Northern half of RWY 13 after RWY intersection, TWY LGT only no RWY LGT for night OPS.

FIA	MELBOURNE CENTRE	124.0 On ground (dependent on ACFT location)
-----	------------------	--

1. All overnight parking, CTC ARO.
2. In ground tie down points AVBL at secondary APN, CTC ARO for INFO.
3. HEL parking, CTC ARO.
4. RWS not prepared for TKOF and landings.

CTAF 126.7

1. Ultralight ACFT OPS at AD.
2. Bird hazard may exist WI VCY of AD.
3. Model ACFT OPR WI 1,000M RAD of PSN 375630.00S 1473200.00E BRG 192 MAG 3.7NM FM ARP SFC to 1,500FT AGL.
4. Increased HEL OPS during summer season for fire EMERG.
5. ACFT OPR above published physical characteristics. CTC ARO for pavement concession.

1. WAC 3470.
2. Also refer to AIP Departure and Approach Procedures.