

**AYERS ROCK/CONNELLAN****ELEV 1626****AVFAX CODE 8502**

NT

UTC +9:30

YAYE

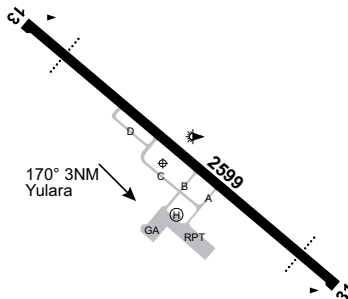
251110S

1305832E

VAR 4 DEG E

CERT

AD OPR Voyages Indigenous Tourism Australia Pty Ltd, Airport Manager, Ayers Rock Airport, PO Box 125, Yulara, NT, 0872. Email: [airport@voyages.com.au](mailto:airport@voyages.com.au). PH Airport Operations 08 8956 2020 H24. Website: [www.ayersrockairport.com.au](http://www.ayersrockairport.com.au).

**REMARKS**

1. PPR from AD OPR via email:
  - a. 5 days PN for ACFT with an ACN at MAX OPR weight greater than PCN or tyre pressure greater than listed value.
  - b. 2 days for all other ACFT.
  - c. for HEL auto-rotation training onto sealed surfaces.
2. AD charges: All ACFT – CTC AD OPR.
3. Direct INTL flights to/from AD not approved.
4. Limited PRKG for ACFT. CTC AD OPR by email for parking slots 48HR PN required.
  - a. GA Apron Bay 10 RESTR to RFDS PC-12 ACFT only.
  - b. Administration fees apply for landing and parking slots required. without 48HR PN (EMERG exempt).
5. All ACFT confine OPS to sealed surfaces.
6. This AD is a Security Controlled Airport. All pilots and operators must possess and display a valid AUS/AYQ ASIC when airside.
7. AH airside access requires a call-out. PH 0428 881 325, call-out fees apply.

**HANDLING SERVICES AND FACILITIES**

Viva Energy/Air BP (JV) – Skyfuel Australia Pty Ltd. 2130-0730 UTC (0700-1700 ACST).  
 AH call-out fee applies. Phone: 0417 632 763 (primary) or 0418 862 100 (secondary).  
 Email: [yulara@skyfuel.com.au](mailto:yulara@skyfuel.com.au). JET A1 tanker, AVGAS card swipe bowsers – V, MC,  
 Viva Fuel2Sky or BP Card.

**General**

The AD OPR does not provide ACFT marshalling services. All requests for ACFT marshalling should be directed to the airlines or a FBO.

**PASSENGER FACILITIES**

PT/HC/BU/LG/RF/WC

**RESCUE AND FIREFIGHTING SERVICES**

1. CAT 6 OPR HR;
  - a. MON - FRI 2230-0730 UTC.
  - b. SAT and SUN 2230-0630 UTC.
2. 131.0 MHz AVBL HO.

**METEOROLOGICAL INFORMATION PROVIDED**

1. TAF CAT B, METAR/SPECI.
2. AWIS Phone 08 7922 2516 - Report faults to BoM.
3. AWIS FREQ 126.55 not AVBL outside CA/GRS HR - Phone BoM for current weather.

**PHYSICAL CHARACTERISTICS**

13/31 126 85a PCR 377/F/A/1.41 MPa/T Grooved WID 30 RWS 150

**AERODROME AND APPROACH LIGHTING**

RWY 13/31 LIRL AFRU+PAL 126.9 SDBY PWR AVBL  
RWY 13/31 PAPI AFRU+PAL 126.9 3.0 DEG54FT SDBY PWR AVBL  
RWY 13/31 edge light spacing: 60M.

**OTHER LIGHTING**

1. TWY LGT: Blue edge on TWY A and C.
2. APN LGT: Blue edge on RPT APN.
3. Secondary PWR switchover time: 10 SEC.

**ATS AND AERODROME COMMUNICATION FACILITIES**

FIA MELBOURNE CENTRE 121.85 On ground  
CA/GRS AYERS ROCK/ 126.9 (1)  
CONNELLAN CA/GRS

- (1) CS "Ayers Rock Radio".
  - a. Provided on CTAF 126.9 during Air Transport Operation (ATO) OPR BTN 0815 – 1545 Local (2245 – 0615 UTC).
  - b. CA/GRS OPR HRS may be reduced if published SKED ATO have been completed, or extended for AH ATO HJ.
  - c. PAPI activated by CA/GRS during OPR HR.
  - d. CTAF/AFRU 126.9 provided when CA/GRS not AVBL.
  - e. AAIS provided during CA/GRS operation 126.55.
  - f. CA/GRS responds to first broadcast of arriving, transiting or departing ACFT.
  - g. CA/GRS unable to cancel SARWATCH. Contact FIA 121.85 on ground.

**RADIO NAVIGATION AND LANDING AIDS**

DME	AYE	117.1/118X	251017.3S	1305829.2E	(1)
NDB	AYE	233	251021.7S	1305829.3E	Range 100 (2)

- (1) Antenna ELEV 1621FT.
- (2) 173/0.8 to ARP.

**LOCAL TRAFFIC REGULATIONS**

1. ACFT ABV 22,700KG must use RWY turn pads for 180DEG turns.
2. Sealed TWY B and D only AVBL to ACFT BLW 5,700KG MTOW.
3. Parking restrictions apply at Ayers Rock Airport. ACFT with a wingspan greater than 15M may operate with prior approval from AD OPR. GA apron only AVBL to ACFT BLW 5,700KG MTOW with a wingspan not exceeding 15M.
4. RPT Bays 5 and 5A cannot be occupied simultaneously unless authorised by AD OPR.
5. Pilots of all jet and turboprop ACFT are required to apply MNM power on all engines when departing from parking Bays 1-5 on RPT apron. Also on taxiing to prevent erosion of soft TWY shoulders.
6. Pilots of HEL should hover TAX from or to parking from the FATO.
7. HEL not permitted to land/take off directly from GA/RPT aprons unless OPR on approved helipads.
8. HEL OPS ABV 5,700KG MTOW to be coordinated with the AD OPR.
9. To avoid confusion, pilots should refer to the aerodrome as "Ayers Rock" or "Ayers Rock Aerodrome" and should refer to the Rock itself (the icon) as "The Rock".

**FLIGHT PROCEDURES**

1. Pilots of arriving ACFT shall broadcast on the CTAF at 20NM YAYE.
2. Pilots of arriving ACFT are requested to broadcast their intended RWY for landing and the planned circuit entry procedure with the inbound broadcast.
3. Pilots of outbound ACFT shall monitor the CTAF until 20NM YAYE or WI CTA.
4. Non-residential pilots wishing to visit Ayers Rock/Connellan are advised to call the CA/GRS to gain an awareness of local patterns, busy periods and local weather info.  
Contact CA/GRS on 08 8956 3668.
5. Right hand circuits RWY 31.
6. Low VIS TKOF less than 800M are not supported.
7. STANDARD SCENIC FLIGHT PROCEDURES - See ERSa Special Procedures.

**CTAF - AFRU 126.9****ADDITIONAL INFORMATION**

1. Bird and animal hazard exists. Confirmed hazards advised via NOTAM.
2. Hazardous conditions exist for light ACFT when LDG on RWY 13 with an E crosswind, due to close proximity of sand dunes alongside the RWS at the N end. Windshear in both speed and direction can exist. To minimise the hazard pilots should aim to achieve touch down either in the first 400 of the RWY or beyond 800 FM the THR. Pilots should also be aware that dust devils are prevalent around the AD throughout the year.
3. Delicensed AD 2 KM NE of Ayers Rock has ceased to exist as a LDG area.
4. Motor Gliders with wing span greater than 15M required to give airport 72HR notice to arrange parking, and should also fold wings prior to entering the GA APN and parking area.

**CHARTS RELATED TO THE AERODROME**

1. WAC 3344.
2. Aerodrome Obstruction Chart Type A: RWY 13/31 September 2012.
3. Also refer to AIP Departure and Approach Procedures.