

**ARMIDALE****ELEV 3556****AVFAX CODE 2026**

NSW

UTC +10

YARM

303141S

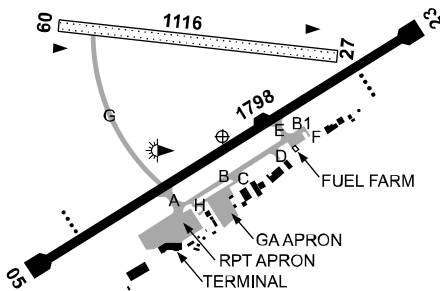
1513702E

VAR 12 DEG E

CERT

AD OPR Armidale Regional Council, PO Box 75A, Armidale, NSW, 2350.

Email: airport@armidale.nsw.gov.au. PH 1300 136 833 (H24). ARO 0412 513 093 (calls only).

**REMARKS**

- AD Charges: All ACFT.
- This AD is a Security Controlled Airport. All pilots and operators are required to possess and display a current ASIC when airside, including all GA areas. Passengers are to be escorted at all times. To re-enter airside, find gate code under flap on airside of exit gates.

**HANDLING SERVICES AND FACILITIES**

VIVA: Armidale Airport Services 0900-1700 Local MON-FRI, AH call-out fee will apply outside normal HR and on PH. 2HR PN RQ. Phone 0427 399 690. JET A1 only. VIVA Fuel2Sky, Carnet card and credit cards (V and MC).

Superair: JET A1, AVGAS. Fuel bowser H24, credit card (V and MC) and debit card. Cash not accepted. Phone 0409 325 238.

**PASSENGER FACILITIES**

LG/WC/RF/TX (02 6771 1455)/ME (Superair 02 6772 5055).

**APRONS AND TAXIWAYS**

RPT APN Bays 1 - 5 slope may exceed 2%.

**AERODROME OBSTACLES**

- Communication towers, lit:
  - 3,865FT AMSL BRG 102 DEG MAG 1.95NM FM ARP. Infringes inner HZS by 173.88FT.
  - 3,899FT AMSL BRG 111 DEG MAG 1.99NM FM ARP. Infringes inner HZS by 208.01FT.
  - 3,916FT AMSL BRG 111 DEG MAG 2.02NM FM ARP. Infringes inner HZS by 224.73FT.
- Communication towers, unlit:
  - 3,816FT AMSL BRG 102 DEG MAG 1.95NM FM ARP. Infringes inner HZS by 124.67FT.
  - 3,880FT AMSL BRG 111 DEG MAG 2.01NM FM ARP. Infringes inner HZS by 189.30FT.
  - 3,837FT AMSL BRG 111 DEG MAG 2.02NM FM ARP. Infringes inner HZS by 145.66FT.
- TWR, lit 3,865FT AMSL BRG 106 DEG MAG 2.03NM FM ARP. Infringes inner HZS by 174.50FT.
- ACFT parked on Bays 5 and 7 may infringe the OLS transitional surface.

**METEOROLOGICAL INFORMATION PROVIDED**

- TAF CAT C, METAR/SPECI.
- AWIS Phone 02 9353 6401 - Report faults to BoM.
- AWIS FREQ 134.75 - Report faults to AD OPR.

**PHYSICAL CHARACTERISTICS**

05/23	047	59a	PCR 190/F/D/X/T	WID 30	RWS 150
09/27	085	37c	Unrated. Grassed gravel	WID 30	RWS 90

**AERODROME AND APPROACH LIGHTING**

RWY 05/23	MIRL	AFRU+PAL 127.5	SDBY PWR AVBL
RWY 05/23	RTIL	AFRU+PAL 127.5	SDBY PWR AVBL
RWY 05	PAPI	AFRU+PAL 127.5	3.0 DEG47FT SDBY PWR AVBL
RWY 23	PAPI	AFRU+PAL 127.5	3.0 DEG46FT SDBY PWR AVBL

- RWY edge light spacing: 05/23: 60M.
- Highway lighting to the east of and running parallel to RWY 05/23 may be mistaken for RWY. Confirm RWY identification by RWY markings/lights/RTIL.

**OTHER LIGHTING**

- Secondary PWR switchover time: 25 SEC.
- TWY LGT: Blue edge.
- RWY 23 starter extension lighting:
  - Edge - blue.
  - RWY end - red/blue.

**ATS AND AERODROME COMMUNICATION FACILITIES**

FIA	BRISBANE CENTRE	125.75 On ground
-----	-----------------	------------------

**RADIO NAVIGATION AND LANDING AIDS**

DME	ARM	112.6/ 73X	303139.8S	1513655.4E	(1)
NDB	ARM	401	303138.3S	1513654.1E	Range 35 (HN 35)

(1) Antenna ELEV 3559FT.

**LOCAL TRAFFIC REGULATIONS**

- Bays 4,5,6 and 7 are a Security Restricted Area. Access for non-RPT OPS by permission of the AD OPR. Bays 1-3 for GA and AEROMED use.
- Non-resident and itinerant operators should contact the ARO before using RWY 09/27 for the latest runway condition report. All operators remain responsible for assessing RWY 09/27 condition and its suitability for intended operations.
- All ACFT ABV 5,000KG MTOW must use RWY end turning nodes.

**CTAF - AFRU 127.5****ADDITIONAL INFORMATION**

ACFT at opposite ends of RWY 05/23 may be out of sight from each other.

**CHARTS RELATED TO THE AERODROME**

- WAC 3357.
- Also refer to AIP Departure and Approach Procedures.