

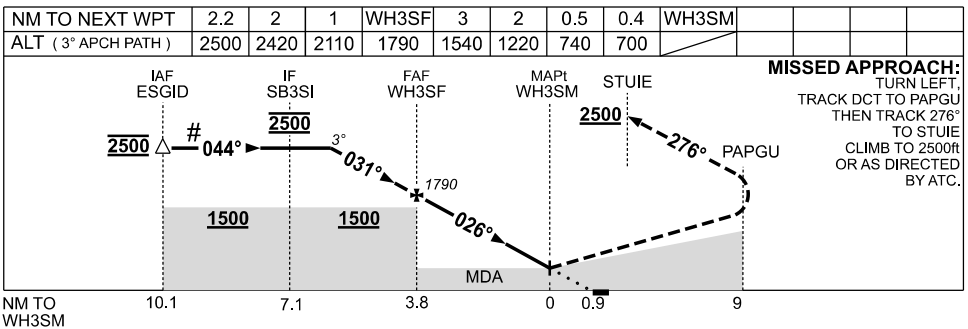
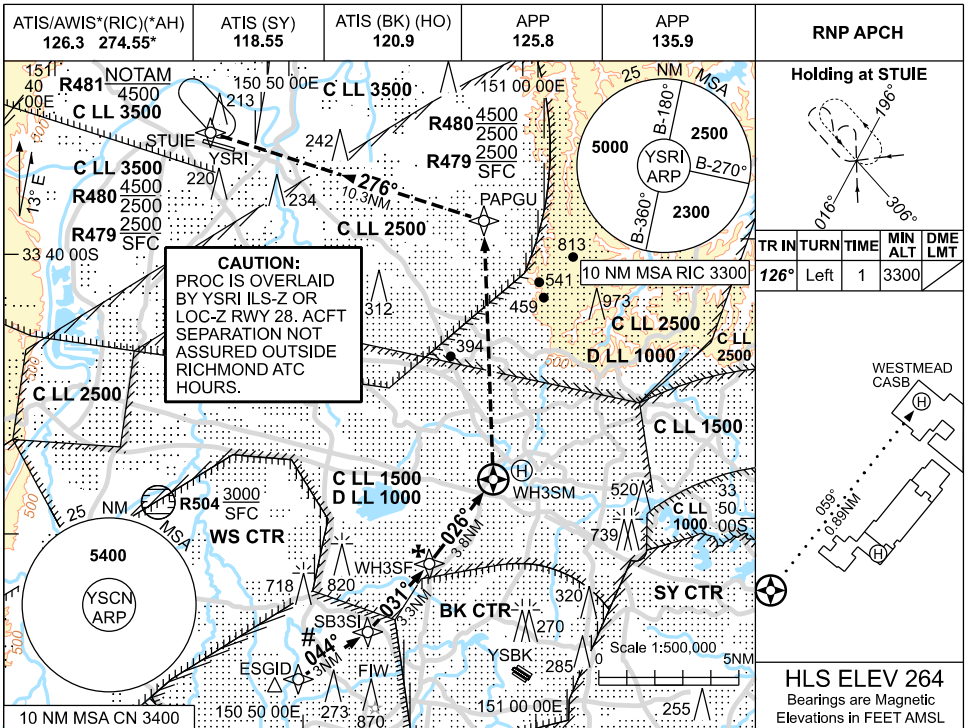
# FOR CASA APPROVED OPERATORS ONLY

USE QNH

RNP 026

09 JUL 2026

WESTMEAD CASB, NSW (YXWS)



CATEGORY	H
LNAV (VAA)	<b>740</b> (476-2.8)
LNAV (VAA) USING SY, RIC OR BK ACTUAL QNH	<b>700</b> (436-2.5)
ALTERNATE	NOT APPLICABLE

**NOTES**

- INITIAL SEGMENT CO-INCIDENT WITH INITIAL SEGMENT FOR YSBK RNP Z RWY 11C.
- COLOUR:** SEE SPEC NOTICES.
- CAUTION:** REMOTE ALTIMETER SETTING SOURCE SY, RIC OR BK.

Changes: NEW PROC.

XWSGN02-187

# FOR CASA APPROVED OPERATORS ONLY