

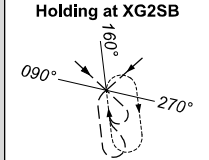
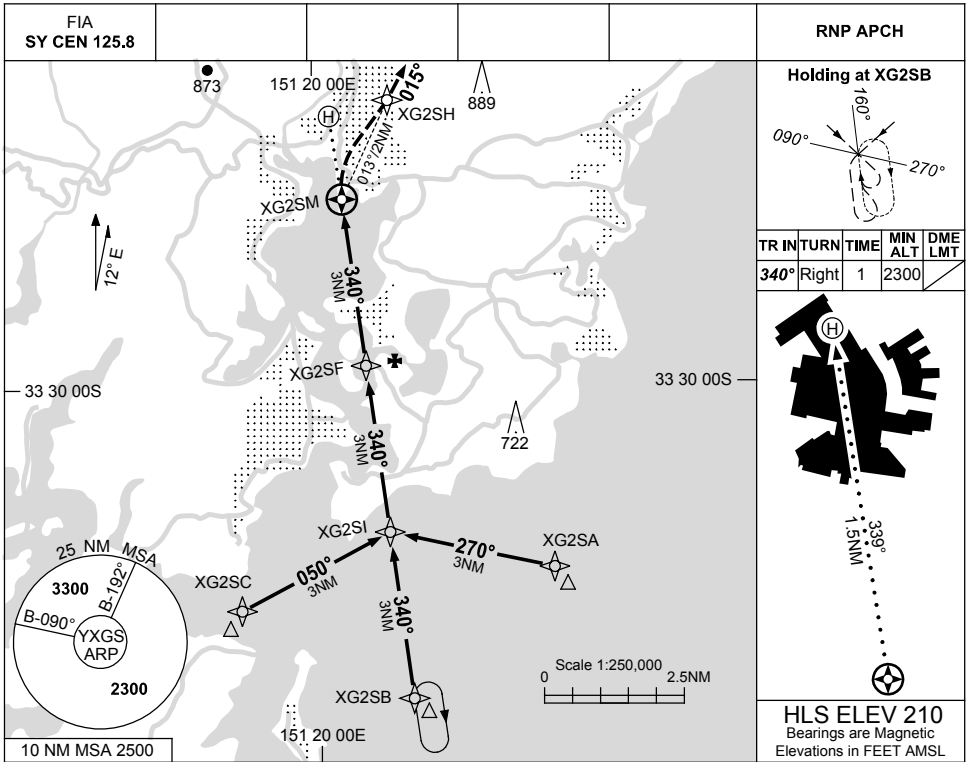
# FOR CASA APPROVED OPERATORS ONLY

USE QNH

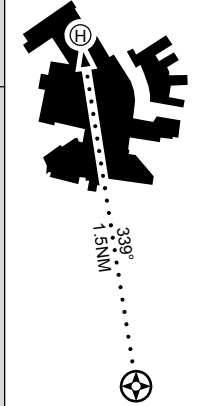
RNP 340

23 MAR 2023

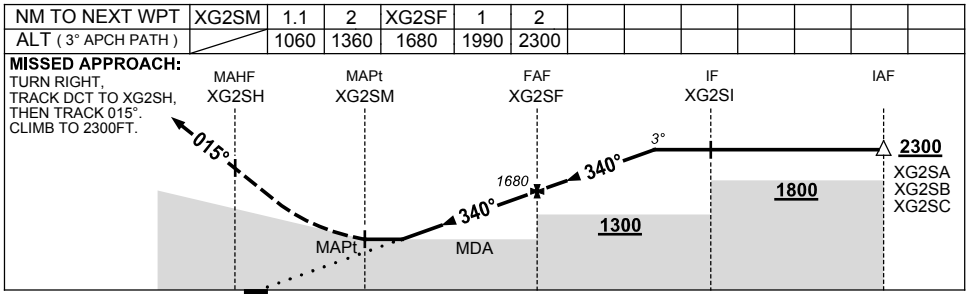
**GOSFORD HOSPITAL, NSW (YXGS)**



TR	TURN	TIME	MIN ALT	DME LMT
340°	Right	1	2300	



**HLS ELEV 210**  
Bearings are Magnetic  
Elevations in FEET AMSL



## NOTES

<b>CATEGORY</b>	<b>H</b>
<b>GNSS (VAA)</b>	<b>1060 (850-4.9)</b>
<b>ALTERNATE</b>	<b>NOT APPLICABLE</b>

Changes: MINIMA, DIST/ALT TABLE, WPT NAMING CONVENTION.

YXGSN01-174

# FOR CASA APPROVED OPERATORS ONLY