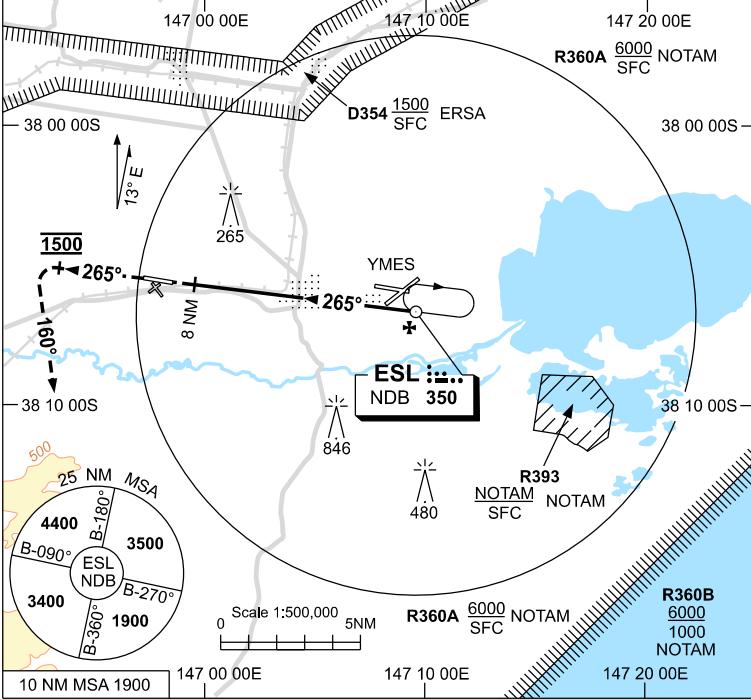


USE QNH

NDB-Z RWY 27
WEST SALE, VIC (YWSL)

09 JUL 2026

ATIS (ESL)* 125.4 350	APP (ESL)* 123.3 340.2	ACC (ESL)* 135.8	TWR (ESL) 118.3 257.8	FIA ML CEN 124.0	CTAF+AFRU* 118.3	PAL+AA 119.6	Bearings are Magnetic Elevations in FEET AMSL
--------------------------	---------------------------	---------------------	--------------------------	---------------------	---------------------	-----------------	--



Holding at ESL NDB

TR	IN	TURN	TIME	MIN	DME
				ALT	LMT
265°	Right	1	2500		

AD ELEV 93

NDB to MAPt	GS (KNOTS)	40	60	80	100	120	140	160					
	TIME (MIN:SEC)	12:00	8:00	6:00	4:48	4:00	3:26	3:00					

MISSED APPROACH:
 TRACK 265° FROM ESL NDB,
 AT 1500ft TURN LEFT,
 TRACK 160°
 CLIMB TO 3500ft OR
 AS DIRECTED BY ATC.

ESL NDB 2500

MAPt

THR 27 ELEV 72

NM FM ESL NDB

NOTES

CATEGORY	A	B	C	D
CIRCLING ‡	870 (777-2.4)		NOT APPLICABLE	
ALTERNATE	(1277-4.4)			

* 1. REFER TO ERSA FOR AVAILABILITY.
 ‡ 2. MDA MAY BE REDUCED BY 100ft USING YMES QNH.
 3. COLOUR : SEE SPEC NOTICES.

Changes: D354.

WSLNB02-187