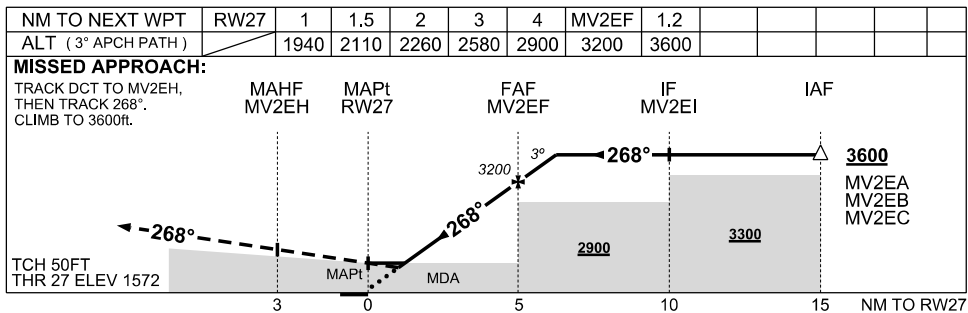
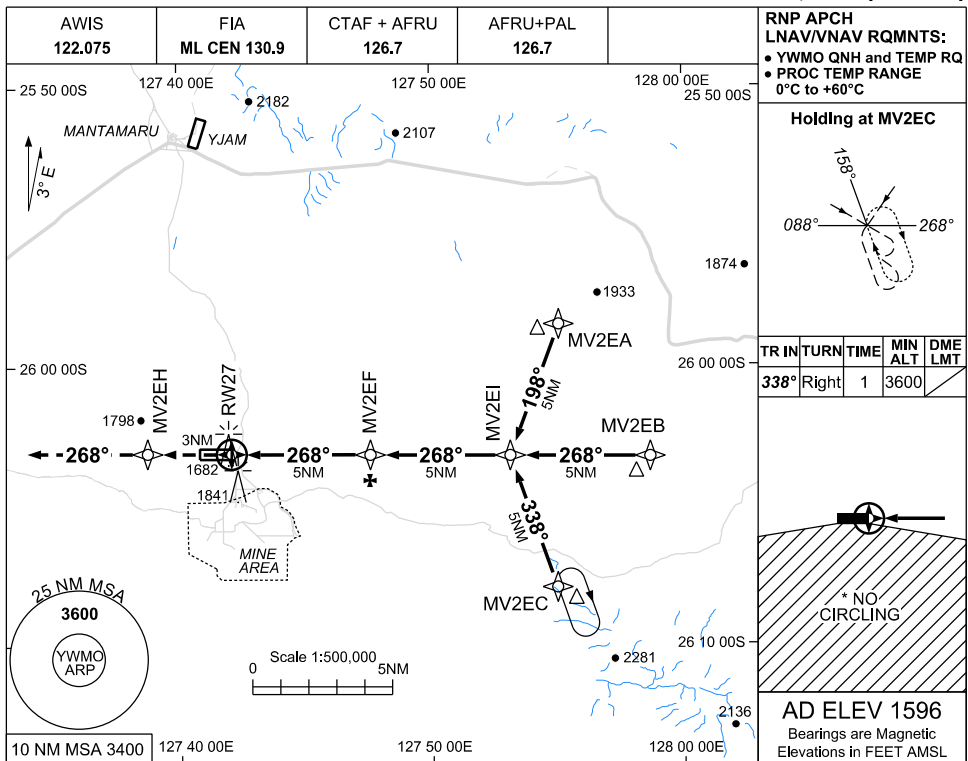


USE QNH

RNP RWY 27

04 SEP 2025

WEST MUSGRAVE, WA (YWMO)



NOTES

1. MAX IAS INITIAL: 210KLT.
2. NO CIRCLING S OF RWY 09/27.

CATEGORY	A	B	C	D
LNAV/VNAV	1920 (348 - 2.0)			NOT APPLICABLE
LNAV	2110 (538 - 3.0)			
* CIRCLING	2320 (724 - 2.4)		2420 (824-4.0)	
ALTERNATE	(1224 - 4.4)		(1324 - 6.0)	

Changes: AD ELEVATION, CIRCLING AND ALTERNATE MINIMA, EDITORIAL

WMOGN02-184