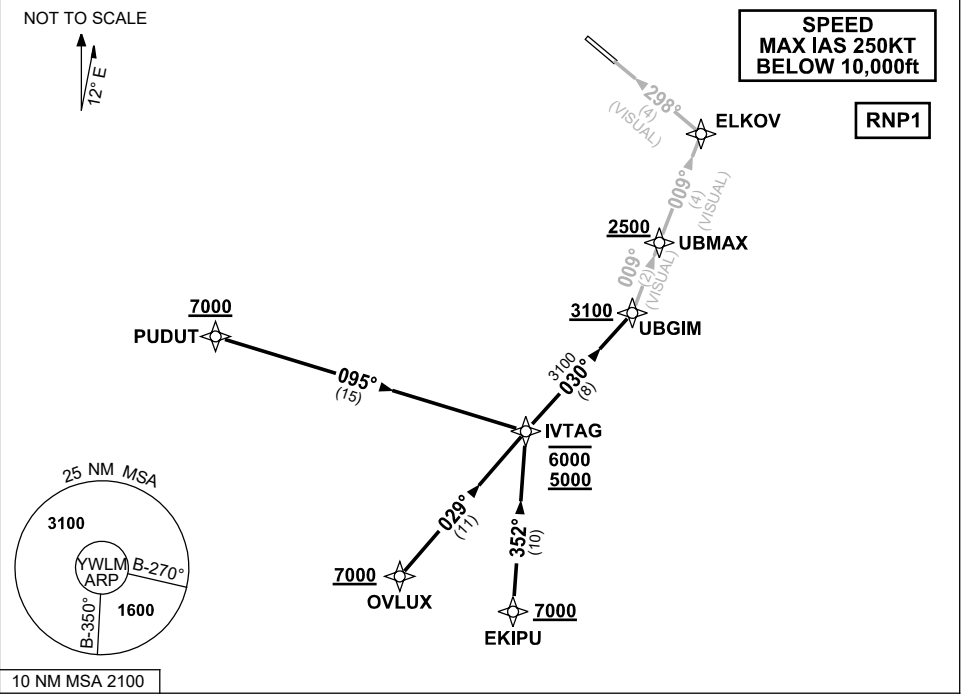


STANDARD ARRIVAL ROUTE (STAR)
IVTAG ONE VICTOR (RNAV) RWY 30
WILLIAMTOWN, NSW (YWLM)

13 JUN 2024

ATIS 134.45 316.1 365	ACD 130.35	SMC 121.8	TWR 118.3 280.9 243.0	APP H 133.3 261.4 L 135.7 293.4	FIA (AH) BN CEN 125.7	CTAF+AFRU (AH) AFRU+PAL (AH) 118.3	BRG are MAG ELEV in FEET AMSL
-----------------------------	---------------	--------------	-----------------------------	---------------------------------------	--------------------------	--	----------------------------------



TRANSITIONS:

PUDUT:

- Cross** PUDUT AT or ABV 7000ft
- From PUDUT track 095° to IVTAG

OVLUX:

- Cross** OVLUX AT or ABV 7000ft
- From OVLUX track 029° to IVTAG

EKIPU:

- Cross** EKIPU AT or ABV 7000ft
- From EKIPU track 352° to IVTAG

ARRIVAL: IVTAG ONE VICTOR RWY 30

- Cross** IVTAG BTN 5000ft and 6000ft
- From IVTAG track 030° to UBGIM
- Cross** UBGIM AT or ABV 3100ft
- Turn LEFT, track 009° VISUAL to UBMAX
- Cross** UBMAX AT or ABV 2500ft
- Track 009° to ELKOV for 4NM VISUAL final.

THEN FOLLOW ARRIVAL INSTRUCTION

COMMUNICATIONS FAILURE: PROCEDURE IN IMC

- Squawk 7600, comply with vertical navigation requirements, but not below MSA.
- Track via the latest STAR clearance to the nominated runway, then fly the most suitable approach in accordance with ERSA EMERG Section 1.5.