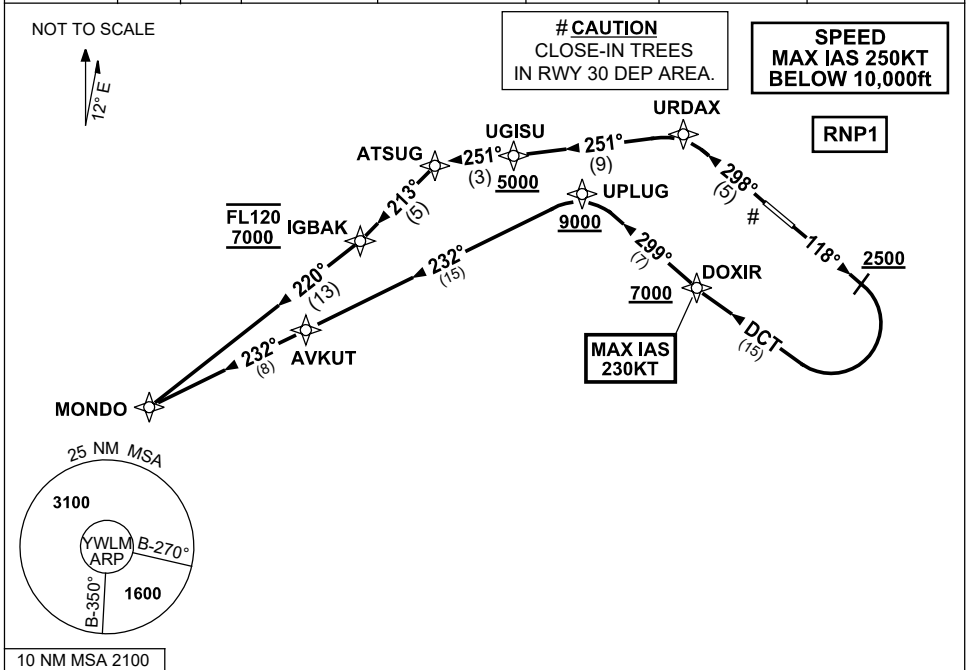


STANDARD INSTRUMENT DEPARTURES (SID)
MONDO ONE DEPARTURE (RNAV) RWY 12/30
WILLIAMTOWN, NSW (YWLM)

30 NOV 2023

| | | | | | | | |
|-----------------------------|---------------|--------------|-----------------------------|---------------------------------------|--------------------------|--|----------------------------------|
| ATIS 134.45 316.1 365 | ACD 130.35 | SMC 121.8 | TWR 118.3 280.9 243.0 | APP H 133.3 261.4 L 135.7 293.4 | FIA (AH) BN CEN 125.7 | CTAF+AFRU (AH) AFRU+PAL (AH) 118.3 | BRG are MAG ELEV in FEET AMSL |
|-----------------------------|---------------|--------------|-----------------------------|---------------------------------------|--------------------------|--|----------------------------------|



MONDO ONE DEPARTURE

RWY 12

- GRAD 3.3%
MAX IAS 230KT until DOXIR
- Track 118°
 - AT or ABV 2500ft turn RIGHT
 - Track DCT to DOXIR
 - **Cross** DOXIR AT or ABV 7000ft
 - Track 299° to UPLUG
 - **Cross** UPLUG AT or ABV 9000ft
(RQ GRAD TO UPLUG: 5.5%)
 - Turn LEFT, track 232° to AVKUT
 - Track 232° to MONDO

RWY 30

- GRAD 3.8% to 500ft thence 3.3%
- Track 298° to URDAX
 - Turn LEFT, track 251° to UGISU
 - **Cross** UGISU AT or ABV 5000ft
(RQ GRAD TO UGISU: 6%)
 - Track 251° to ATSUG
 - Turn LEFT, track 213° to IGBAK
 - **Cross** IGBAK BTN 7000ft and FL 120
 - Turn RIGHT, track 220° to MONDO

COMMUNICATIONS FAILURE PROCEDURE

On recognition of communication failure:

- Squawk 7600
- Maintain last assigned vector for two minutes and, if necessary, climb to minimum safe altitude to maintain terrain clearance, then
- Proceed in accordance with the latest ATC route clearance acknowledged

Changes: NEW PROC.

WLM DP08-177