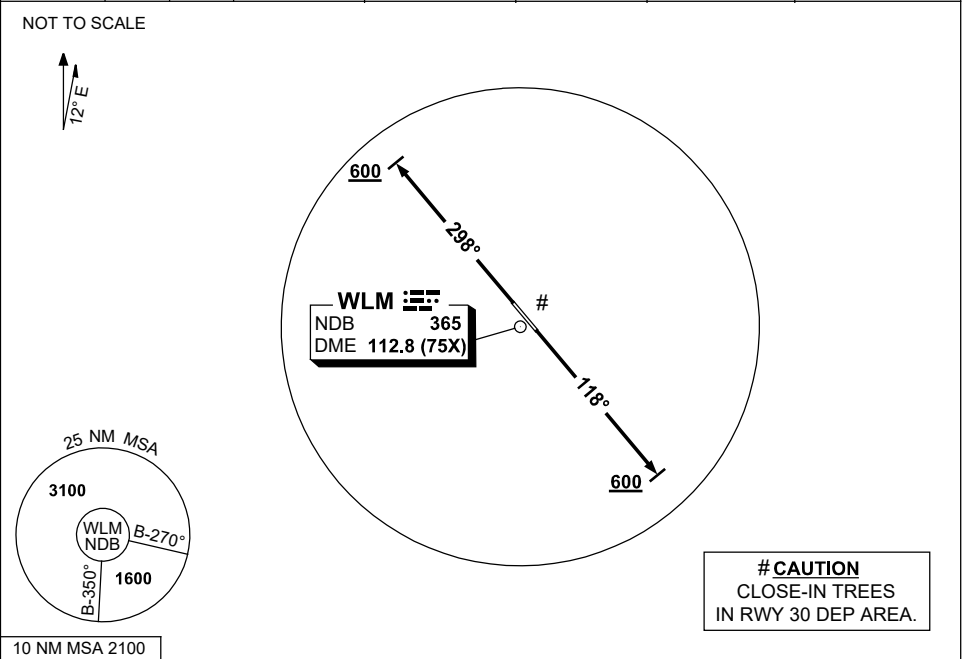


STANDARD INSTRUMENT DEPARTURES (SID)
WILLY FOUR DEPARTURE (RADAR)
WILLIAMTOWN, NSW (YWLM)

28 NOV 2024

ATIS 134.45 316.1 365	ACD 130.35	SMC 121.8	TWR 118.3 280.9 243.0	APP H 133.3 261.4 L 135.7 293.4	FIA (AH) BN CEN 125.7	CTAF+AFRU (AH) AFRU+PAL (AH) 118.3	BRG are MAG ELEV in FEET AMSL
-----------------------------	---------------	--------------	-----------------------------	---------------------------------------	--------------------------	--	----------------------------------



WILLY FOUR DEPARTURE (RADAR)

RWY 12

- GRAD 3.3%
- Track 118°
- AT or ABV 600ft, but not before DER, turn to assigned heading or track.

RWY 30

- GRAD 3.3%
- Track 298°
- AT or ABV 600ft, but not before DER, turn to assigned heading or track.

COMMUNICATIONS FAILURE PROCEDURE

- On recognition of communication failure:
- Squawk 7600
 - Maintain last assigned vector for two minutes and, if necessary, climb to minimum safe altitude to maintain terrain clearance, then
 - Proceed in accordance with the latest ATC route clearance acknowledged