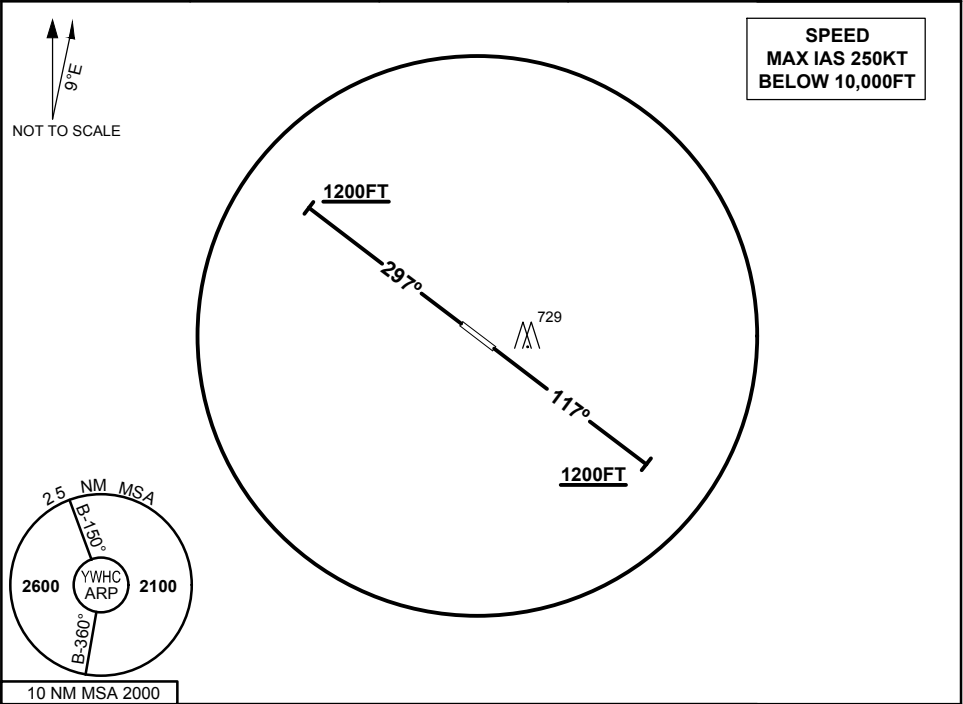


STANDARD INSTRUMENT DEPARTURE
WHITE CLIFFS ONE DEPARTURE
WHITE CLIFFS, NSW (YWHC)

21 MAY 2020

AWIS 128.45	FIA ML CEN 124.9	CTAF 126.7	PAL 120.05	BRG are MAG ELEV in FEET AMSL
----------------	---------------------	---------------	---------------	----------------------------------



WHITE CLIFFS ONE DEPARTURE

RWY 12

- GRAD 3.8% to 1200FT thence 3.3%
- Track 117°
- At or above 1200FT turn as required
- Continue climb to 2600FT
- Intercept flight plan route

RWY 30

- GRAD 3.3%
- Track 297°
- At or above 1200FT turn as required
- Continue climb to 2600FT
- Intercept flight plan route

NOTES

- NIL -