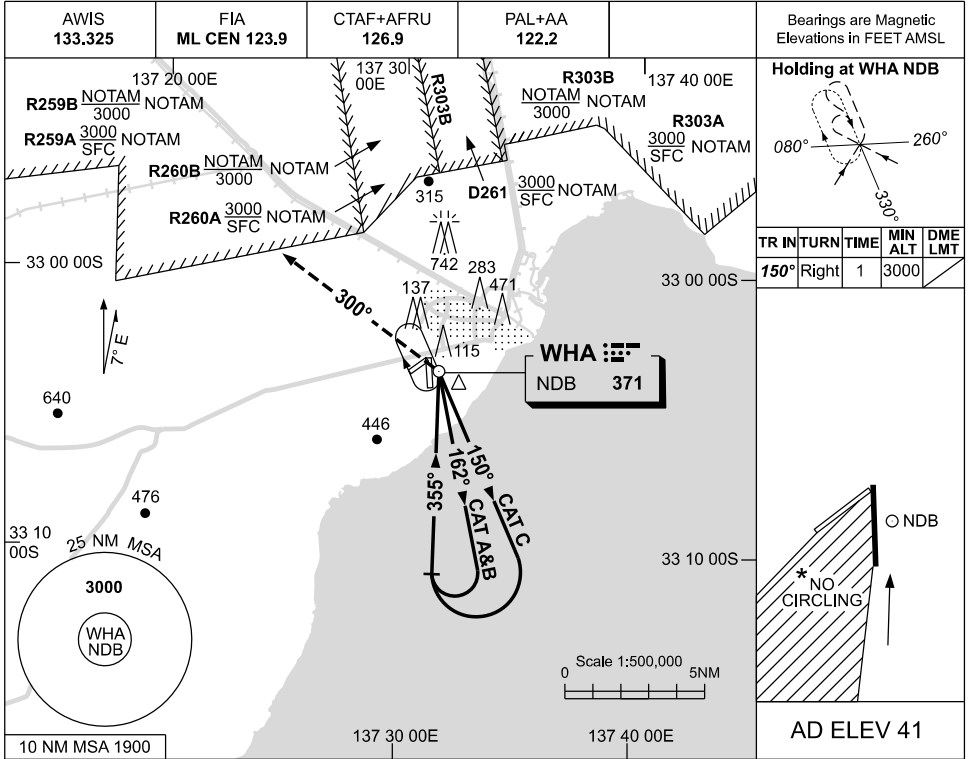


USE QNH

NDB RWY 35

WHYALLA, SA (YWHA)

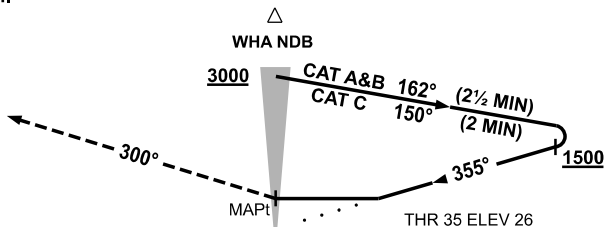
09 JUL 2026



DME DIST	NOT APPLICABLE									
ALT										

MISSED APPROACH:

TURN LEFT,
TRACK 300°.
CLIMB TO 3000ft.



NOTES

1. MAX IAS:
INITIAL : 220KT.
- *2. NO CIRCLING IN
SECTOR WEST OF
RWY 17 / 35 AND
SOUTH OF
RWY 05 / 23.
3. CLR RQ WHEN
RESTRICTED AREAS
ACT.

CATEGORY	A	B	C	D
S-I NDB	600 (574-3.2)			
CIRCLING *	710 (669-2.4)		1240 (1199-4.0)	
ALTERNATE	(1169-4.4)		(1699-6.0)	
				NOT APPLICABLE

Changes: AWIS FREQ.

WHANB01-187