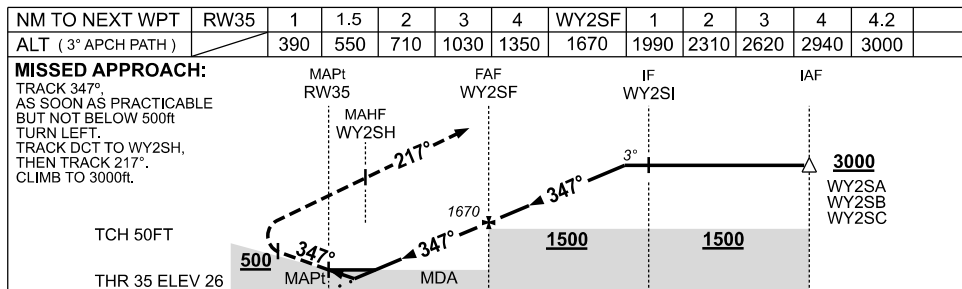
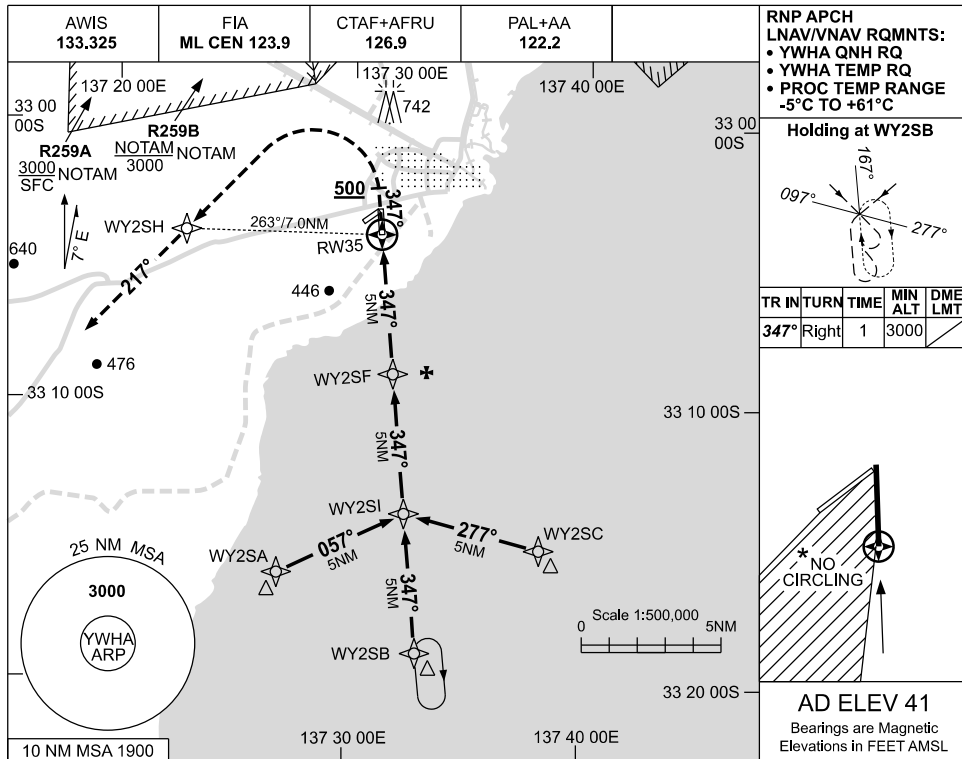


USE QNH

RNP RWY 35
WHYALLA, SA (YWHA)

09 JUL 2026



CATEGORY	A		B		C		D	
	1	1.5	2	3	4	5	10	15
LNAV/VNAV	390 (364-2.0)		550 (524-3.0)		710 (669-2.4)		1240 (1199-4.0)	
LNAV	550 (524-3.0)		710 (669-2.4)		1240 (1199-4.0)		1699 (1699-6.0)	
CIRCLING *	710 (669-2.4)		1240 (1199-4.0)		1699 (1699-6.0)		NOT APPLICABLE	
ALTERNATE	(1169-4.4)		(1699-6.0)					

NOTES

- MAX IAS:
INITIAL : 210KT.
MISSED APCH TURN : 185KT.
- NO CIRCLING IN SECTOR WEST OF RWY 17 / 35 AND SOUTH OF RWY 05 / 23.
- HLDG OVERLAYS YPIR RNP RWY 08 HLDG.

Changes: AWIS FREQ.

WHAGN02-187