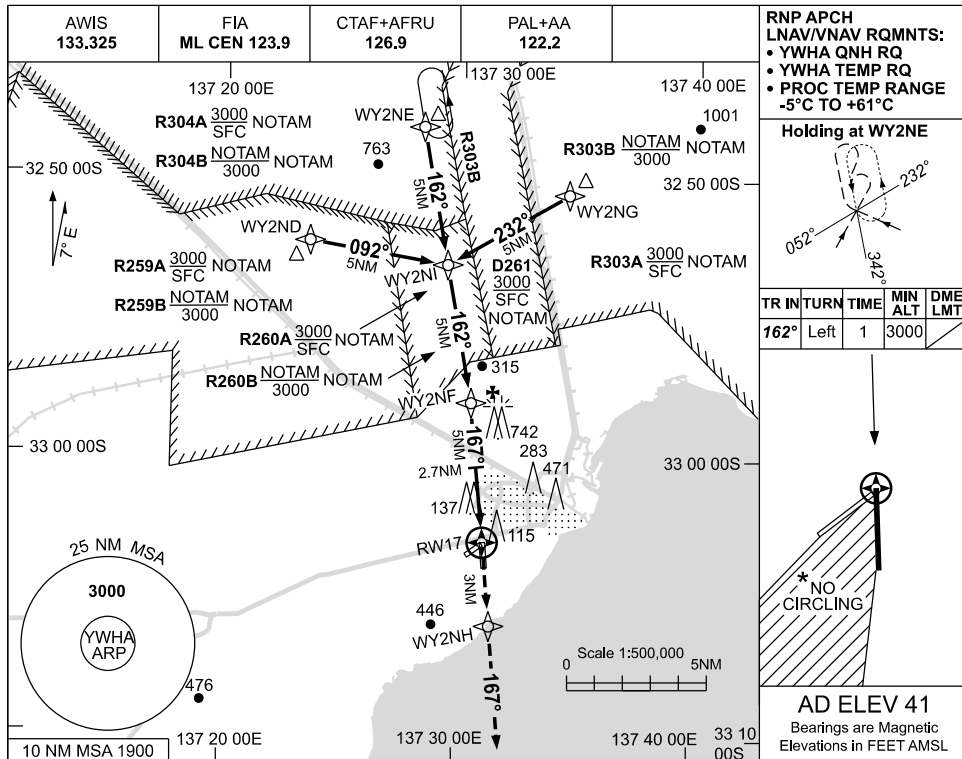


USE QNH

RNP RWY 17
WHYALLA, SA (YWHA)

09 JUL 2026



RNP APCH LNAV/VNAV RQMNTS:

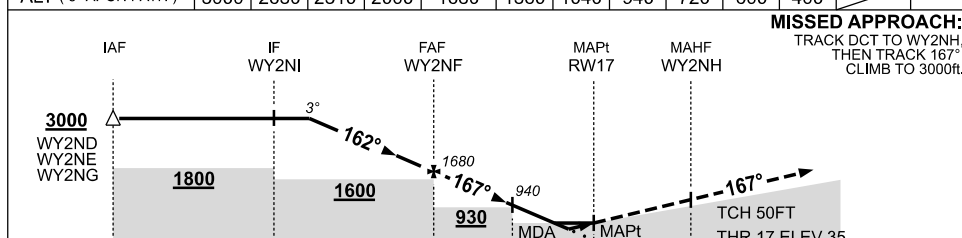
- YWHA QNH RQ
- YWHA TEMP RQ
- PROC TEMP RANGE -5°C TO +61°C

Holding at WY2NE

TR	TURN	TIME	MIN ALT	DME LMT
162°	Left	1	3000	

AD ELEV 41
Bearings are Magnetic
Elevations in FEET AMSL

NM TO NEXT WPT	4.2	3	2	1	WY2NF	4	3	2.7	2	1.6	1	RW17
ALT (3° APCH PATH)	3000	2630	2310	2000	1680	1360	1040	940	720	600	400	



MISSED APPROACH:
TRACK DCT TO WY2NH,
THEN TRACK 167°.
CLIMB TO 3000ft.

NOTES

- MAX IAS:
HOLDING : 210KT.
INITIAL : 210KT.
- NO CIRCLING IN SECTOR WEST OF RWY 17 / 35 AND SOUTH OF RWY 05 / 23.
- CLR RQ WHEN RESTRICTED AREAS ACT.

CATEGORY	A	B	C	D
LNAV/VNAV	400 (365-2.0)			NOT APPLICABLE
LNAV	600 (559-3.2)			
CIRCLING *	710 (669-2.4)		1240 (1199-4.0)	
ALTERNATE	(1169-4.4)		(1699-6.0)	

Changes: AWIS FREQ.

WHAGN01-187