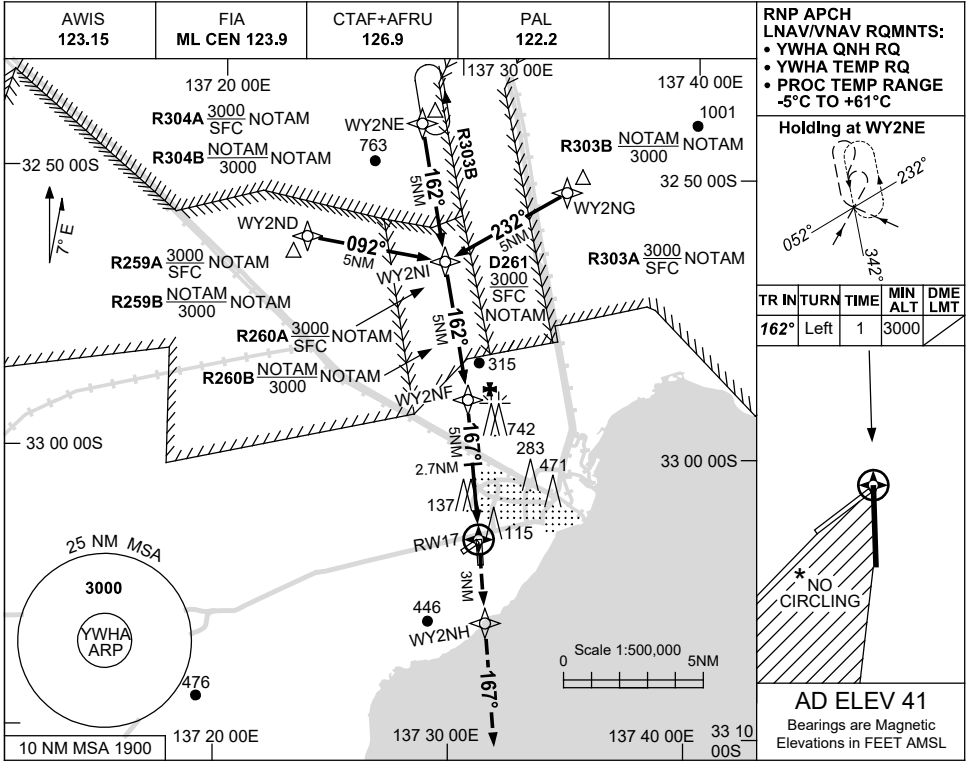


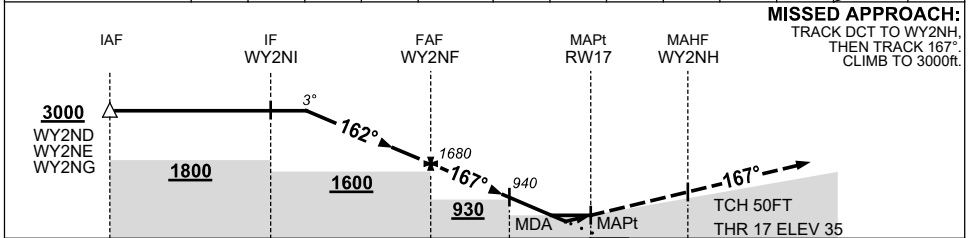
USE QNH

RNP RWY 17
WHYALLA, SA (YWHA)

28 NOV 2024



NM TO NEXT WPT	4.2	3	2	1	WY2NF	4	3	2.7	2	1.6	1	RW17	
ALT (3° APCH PATH)	3000	2630	2310	2000	1680	1360	1040	940	720	600	400		



CATEGORY	A	B	C	D
LNAV/VNAV	400 (365-2.0)			NOT APPLICABLE
LNAV	600 (559-3.2)			
CIRCLING *	710 (669-2.4)		1240 (1199-4.0)	
ALTERNATE	(1169-4.4)		(1699-6.0)	

*2. NO CIRCLING IN SECTOR WEST OF RWY 17 / 35 AND SOUTH OF RWY 05 / 23.
*3. CLR RQ WHEN RESTRICTED AREAS ACT.

Changes: WPT NAMING CONVENTION, Editorial.

WHAGN01-181