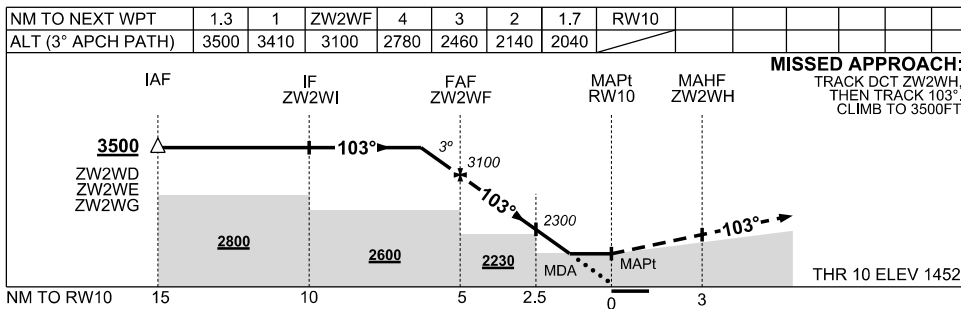
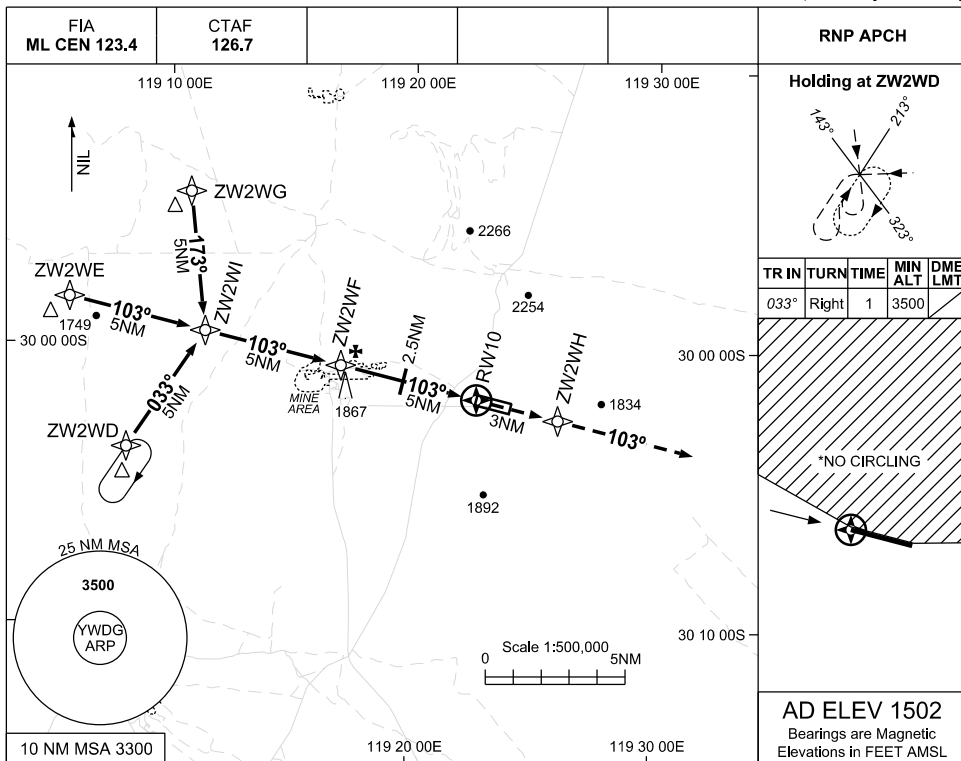


09 JUL 2026

WINDARLING, WA (YWDG)



NOTES

CATEGORY	A	B	C	D
CIRCLING*	2170 (668-2.4)		2400(898-4.0)	
ALTERNATE	(1168-4.4)		(1398-6.0)	
				NOT AUTHORISED

1. MAX IAS:
INITIAL : 210KT
- *2. NO CIRCLING
N OF RWY 10/28
3. **CAUTION:** CHECK
BLASTING TIMES
WITH AD OPR

Changes: INTERMEDIATE SEGMENT MOCA, CHART TITLE

WDG001-187