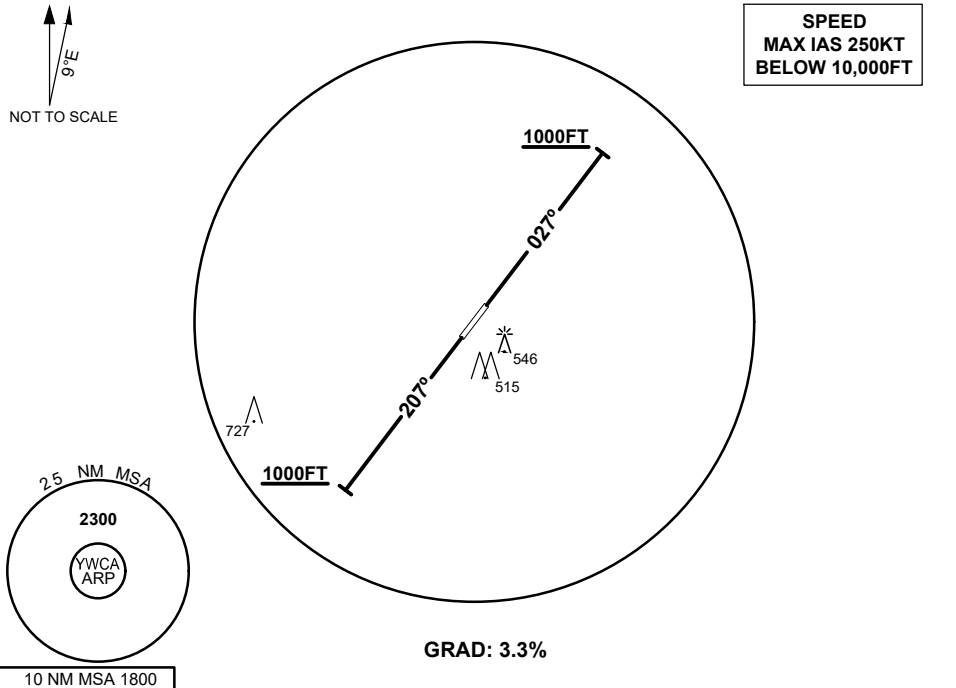


**STANDARD INSTRUMENT DEPARTURE**  
**WILCANNIA ONE DEPARTURE**  
**WILCANNIA, NSW (YWCA)**

09 JUL 2026

AWIS 133.35	FIA ML CEN 124.9	CTAF 126.7	PAL 119.6	BRG are MAG ELEV in FEET AMSL
----------------	---------------------	---------------	--------------	----------------------------------



**WILCANNIA ONE DEPARTURE**

**RWY 03**

- Track 027°
- At or above 1000FT turn as required
- Continue climb to 2300FT
- Intercept flight plan route

**RWY 21**

- Track 207°
- At or above 1000FT turn as required
- Continue climb to 2300FT
- Intercept flight plan route

**NOTES**

- NIL -