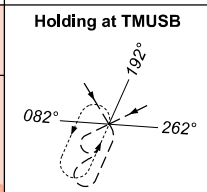
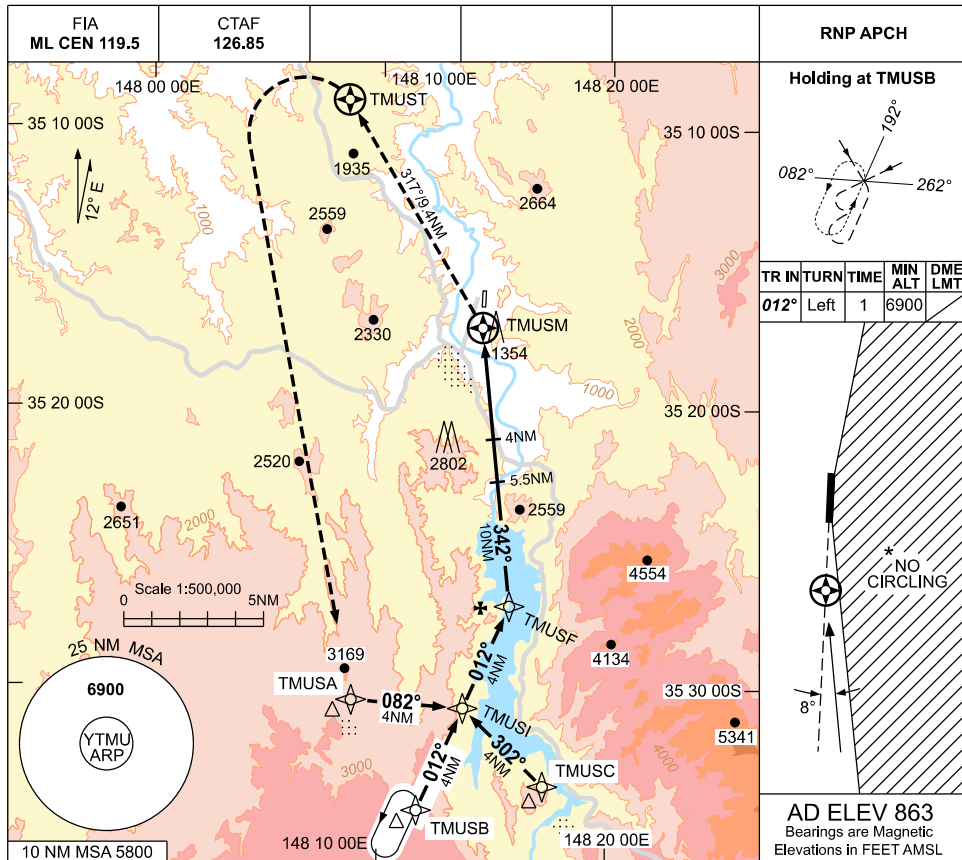


USE QNH

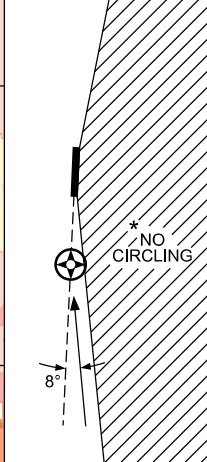
RNP S

TUMUT, NSW (YTMU)

09 JUL 2026

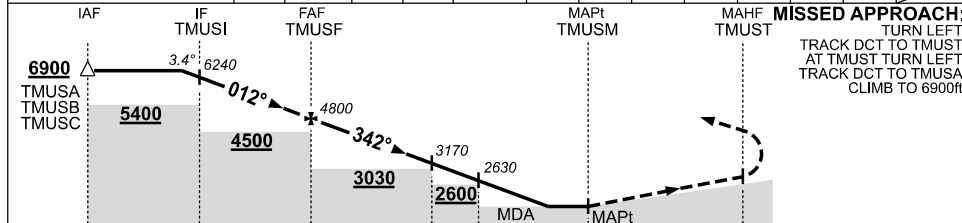


TR IN	TURN	TIME	MIN ALT	DME LMT
012°	Left	1	6900	



AD ELEV 863
Bearings are Magnetic
Elevations in FEET AMSL

NM TO NEXT WPT	1.8	TMUSI	2	1	TMUSF	9	8	7	5.5	4	3	2.6	TMUSM
ALT (3.4° APCH PATH)	6900	6240	5520	5160	4800	4430	4070	3710	3170	2630	2270	2130	



MISSED APPROACH:
TURN LEFT
TRACK DCT TO TMUST;
AT TMUST TURN LEFT;
TRACK DCT TO TMUSA;
CLIMB TO 6900ft.

NM TO TMUSM: 18, 14, 10, 5.5, 4, 0.7, 9.4

CATEGORY	A	B	C	D
CIRCLING*	2130 (1267-2.4)		NOT APPLICABLE	
ALTERNATE	(1767-4.4)		NOT APPLICABLE	

- NOTES**
- NO CIRCLING EAST OF RWY 17/35.
 - COLOUR: SEE SPEC NOTICES.

Changes: CTAF, Editorial.

TMUGN01-187