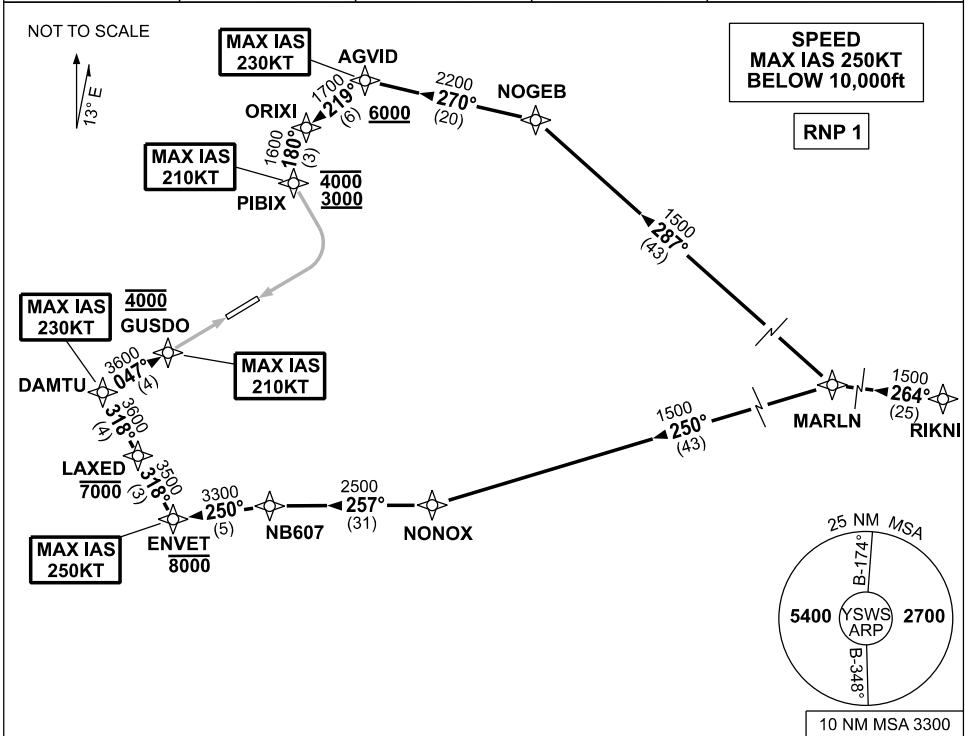


**STANDARD INSTRUMENT ARRIVAL (STAR)  
RIKNI ONE NOVEMBER ARRIVAL (RNAV)  
SYDNEY/NANCY-BIRD WALTON, NSW (YSWS)**

09 JUL 2026

ATIS 127.0	APP 124.4 119.35	TWR 128.1	SMC 124.05	Bearings are Magnetic Elevations in FEET AMSL
---------------	---------------------	--------------	---------------	--------------------------------------------------



**ARRIVAL: RIKNI ONE NOVEMBER**  
• From RIKNI, track 264° to MARLN

**RWY 05:**

- From MARLN track 250° to NONOX
- Turn RIGHT, track 257° to NB607
- Turn LEFT, track 250° to ENVET  
Cross ENVET AT or BLW 8000ft  
MAX IAS 250KT from ENVET
- Turn RIGHT, track 318° to LAXED  
Cross LAXED AT or BLW 7000ft
- Track 318° to DAMTU  
MAX IAS 230KT from DAMTU
- Turn RIGHT, track 047° to GUSDO for ILS, RNP Z, or LOC RWY 05 approach.  
Cross GUSDO AT 4000ft  
MAX IAS 210KT from GUSDO

**RWY 23:**

- From MARLN, track 287° to NOGEB
- Turn LEFT, track 270° to AGVID  
Cross AGVID AT or ABV 6000ft  
MAX IAS 230KT from AGVID
- Turn LEFT, track 219° to ORIXI
- Turn LEFT, track 180° to PIBIX for ILS, RNP Z, RNP X (AR) or LOC RWY 23 approach  
Cross PIBIX BTN 3000ft to 4000ft  
MAX IAS 210KT from PIBIX

**COMMUNICATIONS FAILURE: PROCEDURE IN IMC  
IF ABLE CTC SY APP +61 2 9556 6515**

- Squawk 7600, comply with vertical navigation requirements, but not below MSA.
- Track via the latest STAR clearance to the nominated runway, then fly the most suitable approach in accordance with ERS A EMERG Section 1.5.

Changes: NEW PROCEDURE.

SWSSR09-187