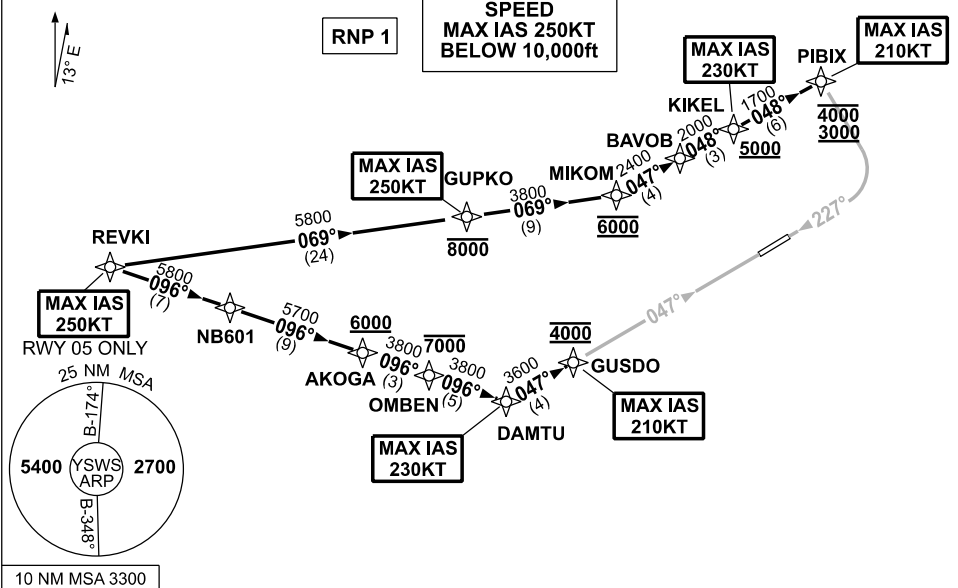


**STANDARD INSTRUMENT ARRIVAL (STAR)
REVKI ONE ALPHA ARRIVAL (RNAV)
SYDNEY/NANCY-BIRD WALTON, NSW (YSWS)**

09 JUL 2026

ATIS 127.0	APP 119.35	TWR 128.1	SMC 124.05		Bearings are Magnetic Elevations in FEET AMSL
---------------	---------------	--------------	---------------	--	--

NOT TO SCALE



ARRIVAL: REVKI ONE ALPHA

RWY 05:

- MAX IAS 250KT from REVKI
- From REVKI, track 096° to NB601
- Track 096° to AKOGA
- Cross** AKOGA AT or ABV 6000ft
- Track 096° to OMBEN
- Cross** OMBEN AT or BLW 7000ft
- Track 096° to DAMTU
- MAX IAS 230KT from DAMTU
- Turn LEFT, track 047° to GUSDO
- Cross** GUSDO AT 4000ft
- MAX IAS 210KT from GUSDO
- Track via ILS, RNP Z or LOC RWY 05 approach.

RWY 23:

- From REVKI, track 069° to GUPKO
- Cross** GUPKO AT or BLW 8000ft
- MAX IAS 250KT from GUPKO
- Track 069° to MIKOM
- Cross** MIKOM AT 6000ft
- Turn LEFT, track 047° to BAVOB
- Turn RIGHT, track 048° to KIKEL
- Cross** KIKEL AT or ABV 5000ft
- MAX IAS 230KT from KIKEL
- Track 048° to PIBIX
- Cross** PIBIX BTN 3000ft to 4000ft
- MAX IAS 210KT from PIBIX
- Track via ILS, RNP X (AR), RNP Z or LOC RWY 23 approach.

**COMMUNICATIONS FAILURE: PROCEDURE IN IMC
IF ABLE CTC SY APP +61 2 9556 6515**

- Squawk 7600, comply with vertical navigation requirements, but not below MSA.
- Track via the latest STAR clearance to the nominated runway, then fly the most suitable approach in accordance with ERS A EMERG Section 1.5.

Changes: NEW PROCEDURE.

SWSSR07-187