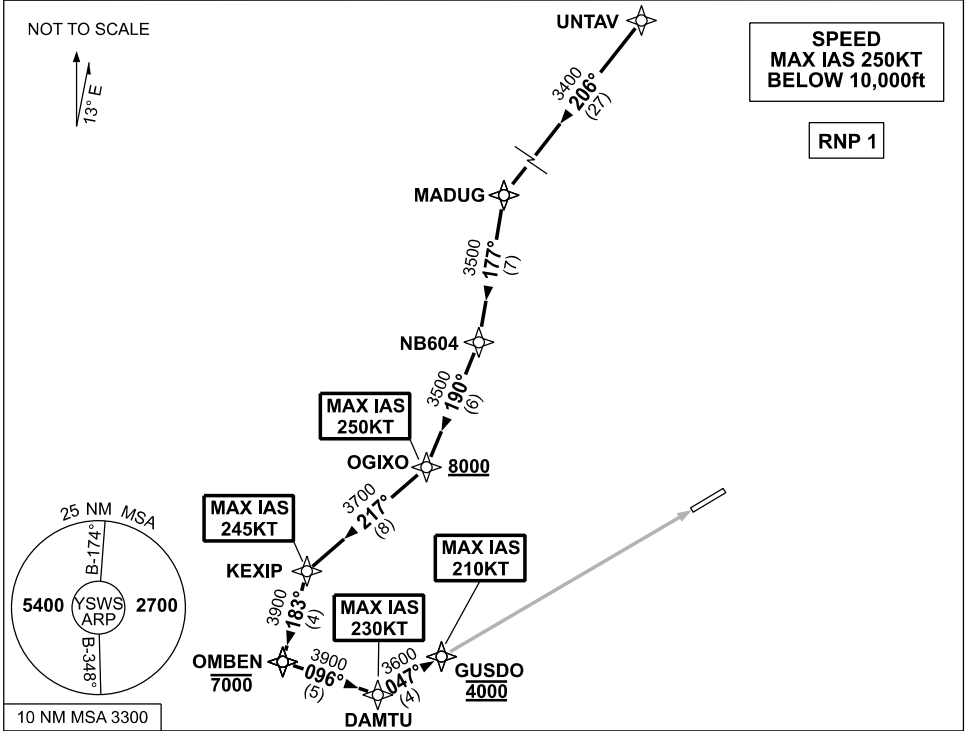


**STANDARD INSTRUMENT ARRIVAL (STAR)
RWY 05 UNTAV ONE NOVEMBER ARRIVAL (RNAV)
SYDNEY/NANCY-BIRD WALTON, NSW (YSWS)**

09 JUL 2026

ATIS 127.0	APP 119.35	TWR 128.1	SMC 124.05	Bearings are Magnetic Elevations in FEET AMSL
---------------	---------------	--------------	---------------	--



ARRIVAL: UNTAV ONE NOVEMBER

RWY 05:

- From UNTAV track 206° to MADUG
- Turn LEFT, track 177° to NB604
- Turn RIGHT, track 190° to OGIXO
Cross OGIXO AT or ABV 8000ft
MAX IAS 250KT AT OGIXO
- Turn RIGHT, track 217° to KEXIP
MAX IAS 245KT AT KEXIP
- Turn LEFT, track 183° to OMBEN
Cross OMBEN AT or BLW 7000ft
- Turn LEFT, track 096° to DAMTU
MAX IAS 230KT AT DAMTU
- Turn LEFT, track 047° to GUSDO for ILS, RNP Z or LOC RWY 05 approach.
Cross GUSDO AT 4000ft
MAX IAS 210KT AT GUSDO

**COMMUNICATIONS FAILURE: PROCEDURE IN IMC
IF ABLE CTC SY APP +61 2 9556 6515**

- Squawk 7600, comply with vertical navigation requirements, but not below MSA.
- Track via the latest STAR clearance to the nominated runway, then fly the most suitable approach in accordance with ERS A EMERG Section 1.5.

Changes: NEW PROCEDURE.

SWSSR05-187