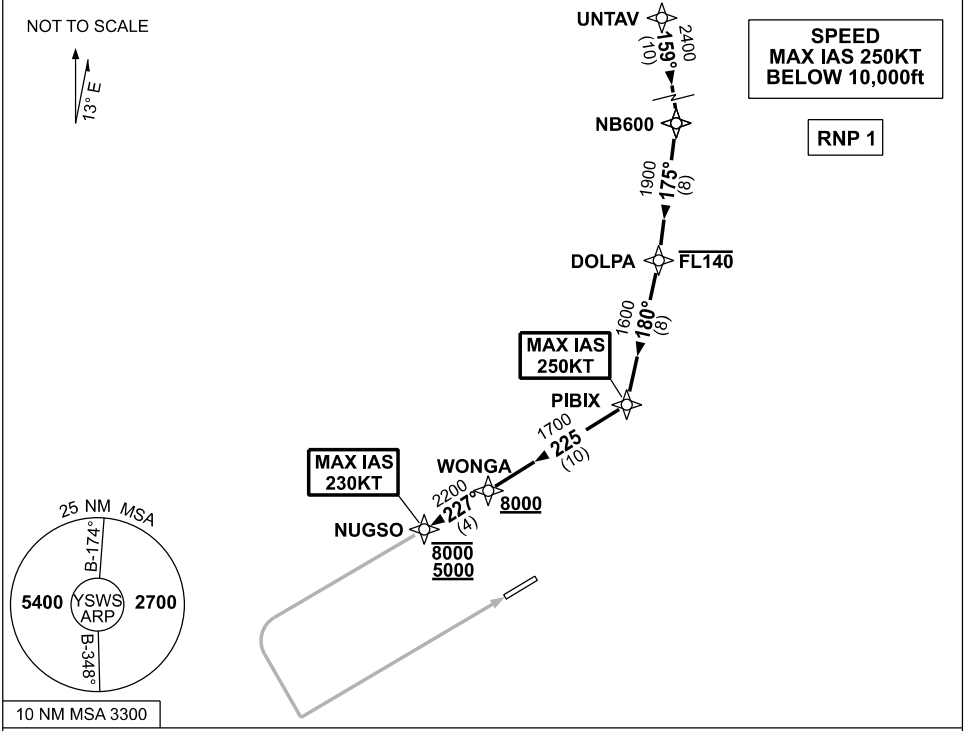


**STANDARD INSTRUMENT ARRIVAL (STAR)  
RWY 05 UNTAV ONE BRAVO ARRIVAL (RNAV)  
SYDNEY/NANCY-BIRD WALTON, NSW (YSWS)**

**09 JUL 2026**

ATIS 127.0	APP 119.35	TWR 128.1	SMC 124.05	Bearings are Magnetic Elevations in FEET AMSL
---------------	---------------	--------------	---------------	--



**ARRIVAL: UNTAV ONE BRAVO**

**RWY 05:**

- From UNTAV, track 159° to NB600
- Turn RIGHT, track 175° to DOLPA  
**Cross** DOLPA AT or BLW FL140
- Turn RIGHT, track 180° to PIBIX  
MAX IAS 250KT AT PIBIX
- Turn RIGHT, track 225° to WONGA  
**Cross** WONGA AT or ABV 8000ft
- Turn RIGHT, track 227° to NUGSO for ILS, RNP X (AR), RNP Z or LOC RWY 05 approach.  
**Cross** NUGSO BTN 5000ft and 8000ft  
MAX IAS 230KT AT NUGSO

**COMMUNICATIONS FAILURE: PROCEDURE IN IMC  
IF ABLE CTC SY APP +61 2 9556 6515**

- Squawk 7600, comply with vertical navigation requirements, but not below MSA.
- Track via the latest STAR clearance to the nominated runway, then fly the most suitable approach in accordance with ERS A EMERG Section 1.5.

Changes: NEW PROCEDURE.

SWSSR04-187