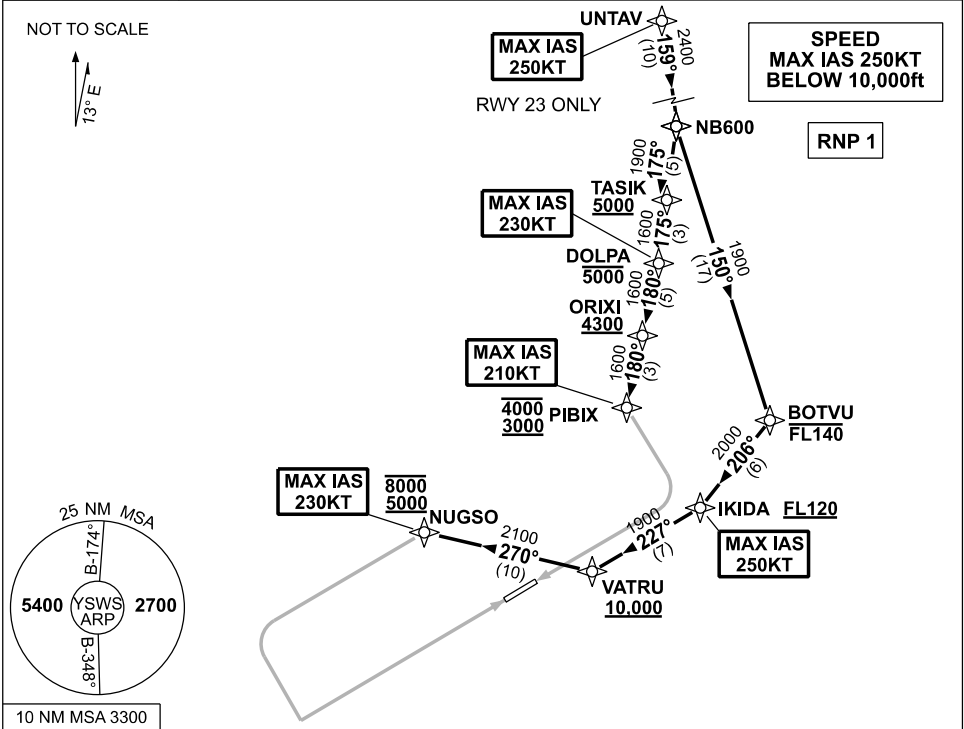


**STANDARD INSTRUMENT ARRIVAL (STAR)
UNTAV ONE ALPHA ARRIVAL (RNAV)
SYDNEY/NANCY-BIRD WALTON, NSW (YSWS)**

09 JUL 2026

ATIS 127.0	APP 119.35	TWR 128.1	SMC 124.05	Bearings are Magnetic Elevations in FEET AMSL
---------------	---------------	--------------	---------------	--



ARRIVAL: UNTAV ONE ALPHA

RWY 05:

- From UNTAV, track 159° to NB600
- Turn LEFT, track 150° to BOTVU
Cross BOTVU AT or BLW FL140
- Turn RIGHT, track 206° to IKIDA
Cross IKIDA AT or ABV FL120
MAX IAS 250KT AT IKIDA
- Turn RIGHT, track 227° to VATRU
Cross VATRU AT or ABV 10,000ft
- Turn RIGHT, track 270° to NUGSO for ILS, RNP X (AR), RNP Z or LOC RWY 05 approach.
Cross NUGSO BTN 5000ft and 8000ft
MAX IAS 230KT AT NUGSO

RWY 23:

- From UNTAV, track 159° to NB600
- Turn RIGHT, track 175° to TASIK
Cross TASIK AT or ABV 5000ft
- Track 175° to DOLPA
Cross DOLPA AT or BLW 5000ft
MAX IAS 230KT AT DOLPA
- Turn RIGHT, track 180° to ORIXI
Cross ORIXI AT or ABV 4300ft
- Track 180° to PIBIX for ILS, RNP X (AR), RNP Z or LOC RWY 23 approach.
Cross PIBIX BTN 3000ft and 4000ft
MAX IAS 210KT AT PIBIX

**COMMUNICATIONS FAILURE: PROCEDURE IN IMC
IF ABLE CTC SY APP +61 2 9556 6515**

- Squawk 7600, comply with vertical navigation requirements, but not below MSA.
- Track via the latest STAR clearance to the nominated runway, then fly the most suitable approach in accordance with ERS A EMERG Section 1.5.

Changes: NEW PROCEDURE.

SWSSR03-187